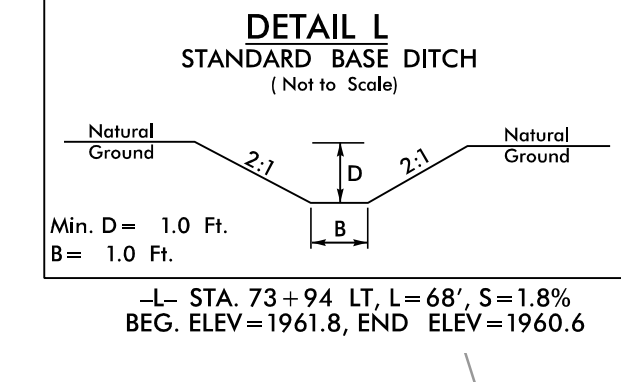
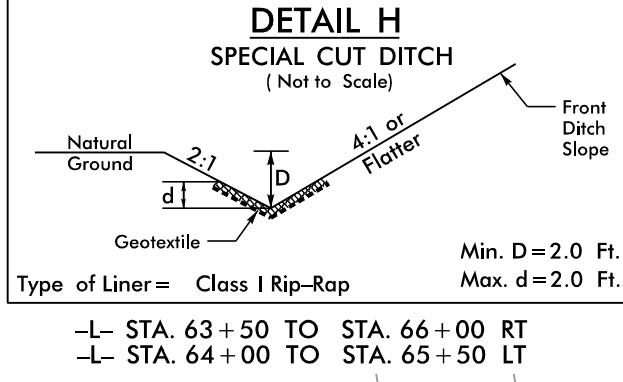
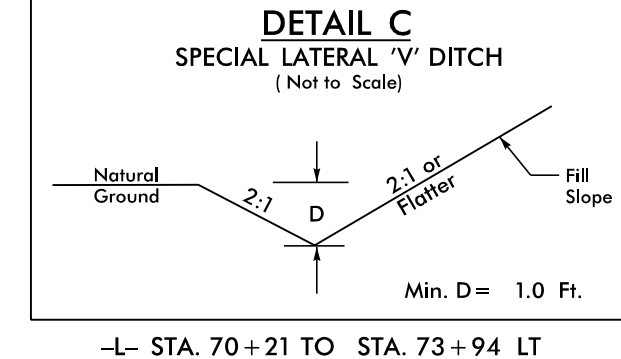
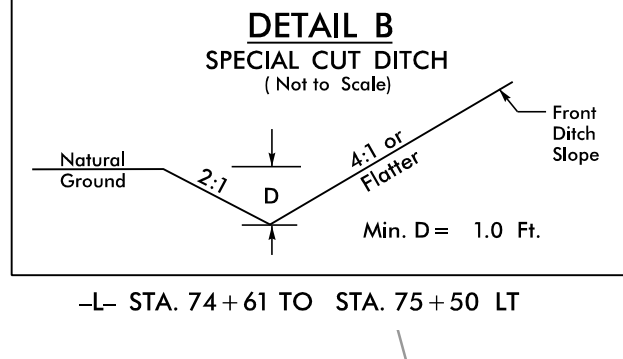
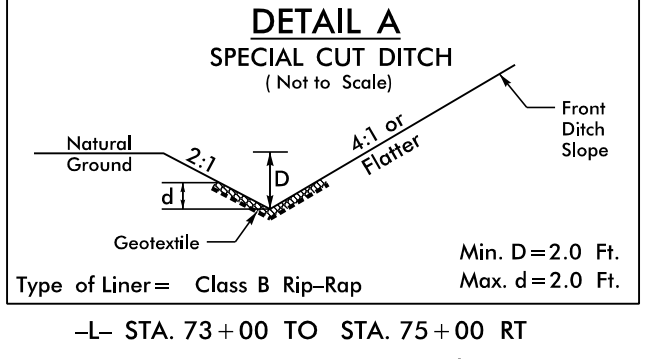
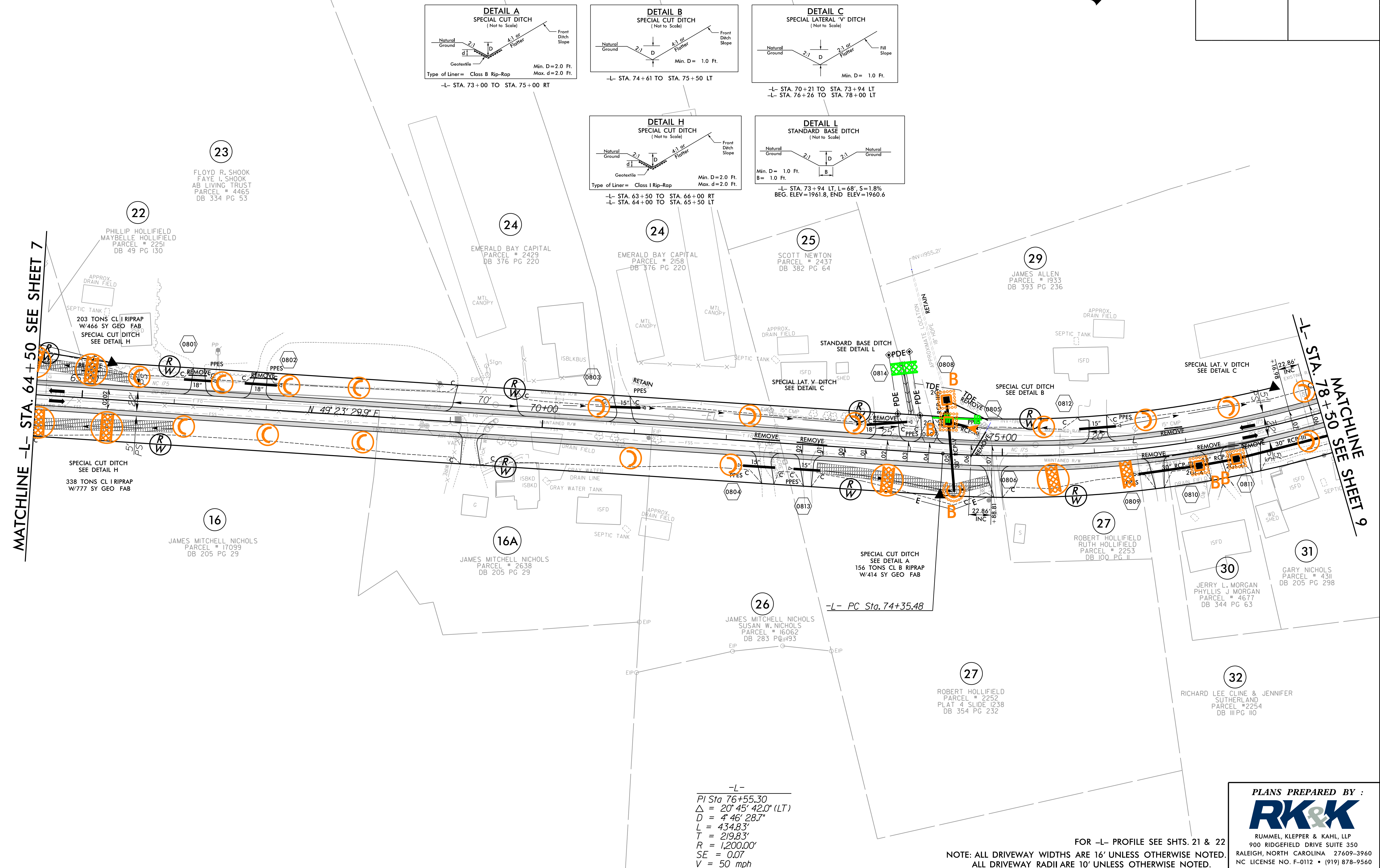
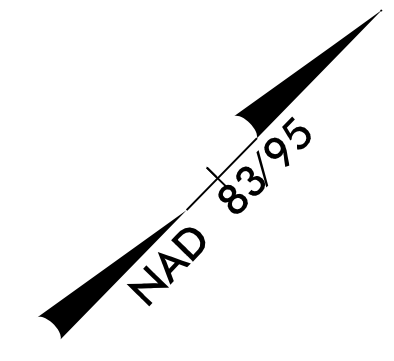


8.17.17/199
R:\Hydro\cadd\PSH\Erosion_Control\NR-5742_EC_psh24.dgn
12/21/2018

PROJECT REFERENCE NO. R-5742	SHEET NO. EC-28/CONST.-08
RW SHEET NO.	
ROADWAY DESIGN ENGINEER	HYDRAULICS ENGINEER



-L-
PI Sta 76+55.30
 $\Delta = 20^\circ 45' 42.0''$ (LT)
D = 4' 46' 28.7"
L = 434.83'
T = 219.83'
R = 1,200.00'
SE = 0.07
V = 50 mph

FOR -L- PROFILE SEE SHTS. 21 & 22
NOTE: ALL DRIVEWAY WIDTHS ARE 16' UNLESS OTHERWISE NOTED.
ALL DRIVEWAY RADII ARE 10' UNLESS OTHERWISE NOTED.

PLANS PREPARED BY :

RUMMEL, KLEPPER & KAHL, LLP
900 RIDGEFIELD DRIVE SUITE 350
RALEIGH, NORTH CAROLINA 27609-3960
NC LICENSE NO. F-0112 • (919) 878-9560