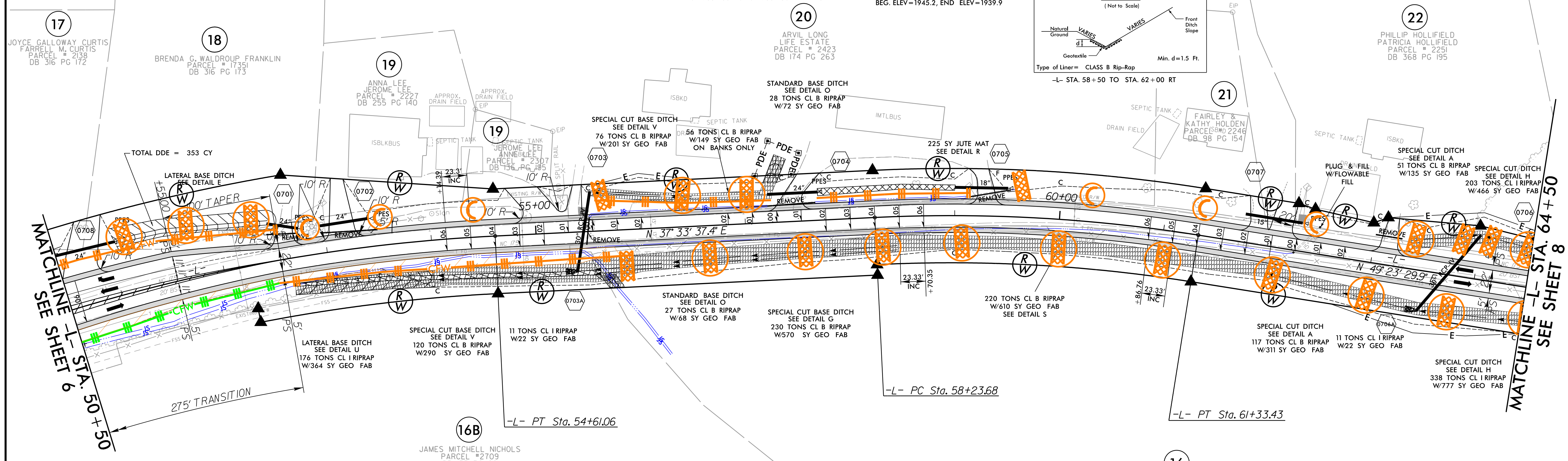
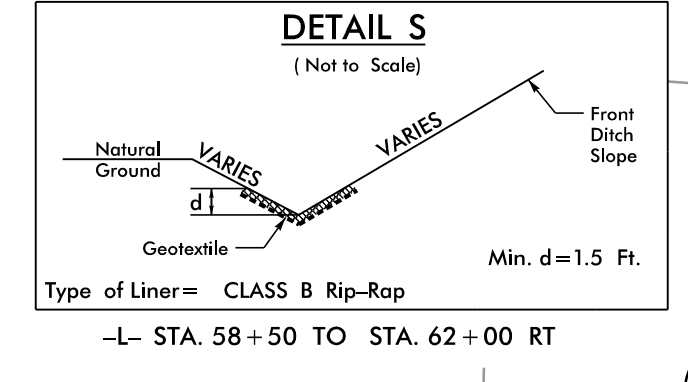
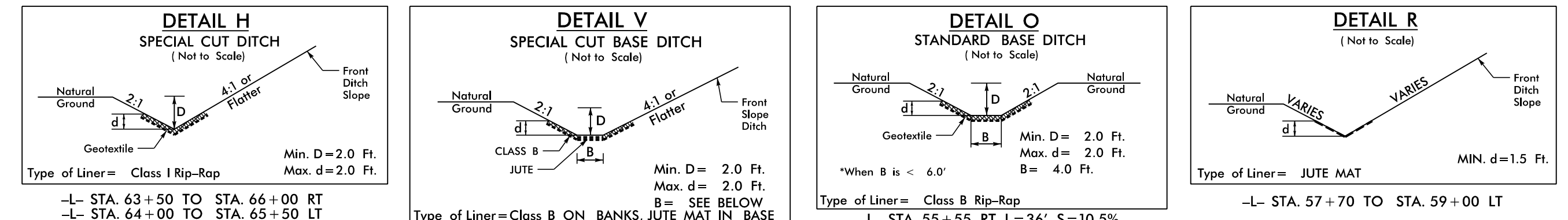
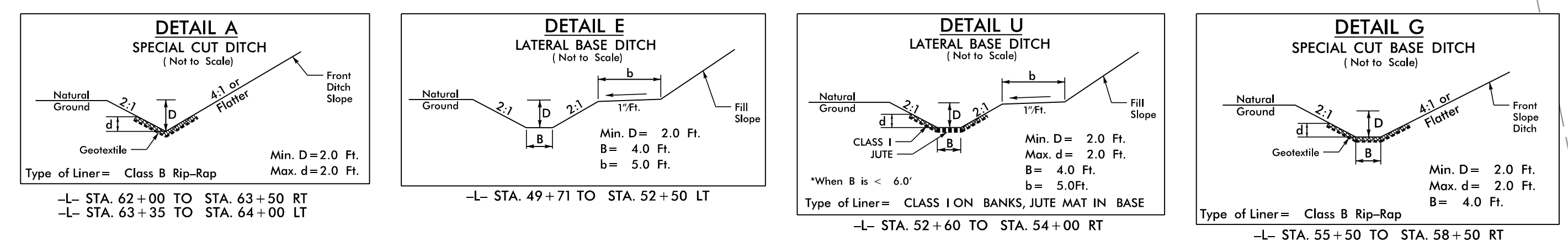
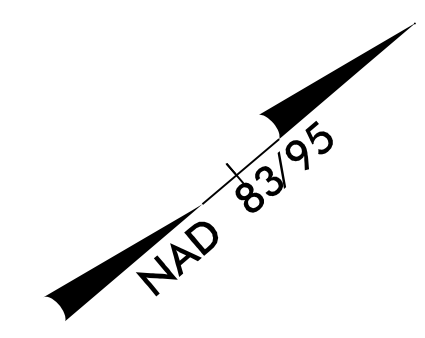


PROJECT REFERENCE NO.	SHEET NO.
R-5742	EC-27/CONST.-07
RW SHEET NO.	
ROADWAY DESIGN ENGINEER	HYDRAULICS ENGINEER



PI Sta 46+9.01	PI Sta 59+79.11
$\Delta = 67^{\circ}16'02.0''$ (RT)	$\Delta = 11^{\circ}49'52.5''$ (RT)
$D = 3^{\circ}27'43.1''$	$D = 3^{\circ}49'11.0''$
$L = 1,943.03'$	$L = 309.74'$
$T = 1,100.98'$	$T = 155.42'$
$R = 1,655.00'$	$R = 1,500.00'$
$SE = 0.06$	$SE = 0.06$
$V = 50$ mph	$V = 50$ mph

NOTE: ALL DRIVEWAY WIDTHS ARE 16' UNLESS OTHERWISE NOTED.  
ALL DRIVEWAY RADII ARE 10' UNLESS OTHERWISE NOTED.

PLANS PREPARED BY :

RUMMEL, KLEPPER & KAHL, LLP  
900 RIDGEFIELD DRIVE SUITE 350  
RALEIGH, NORTH CAROLINA 27609-3960  
NC LICENSE NO. F-0112 • (919) 878-9560