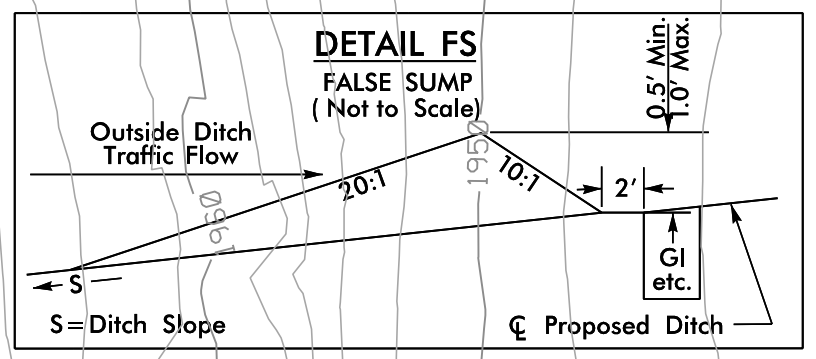
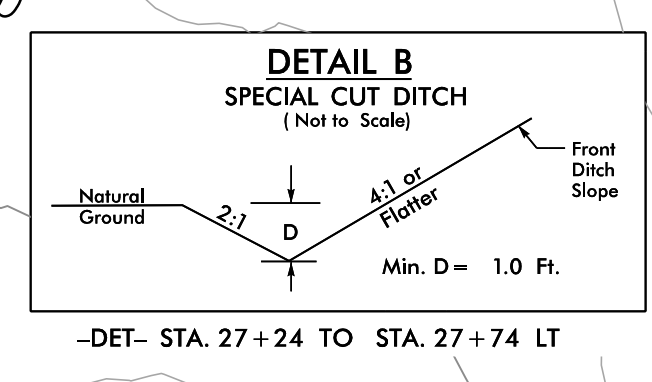
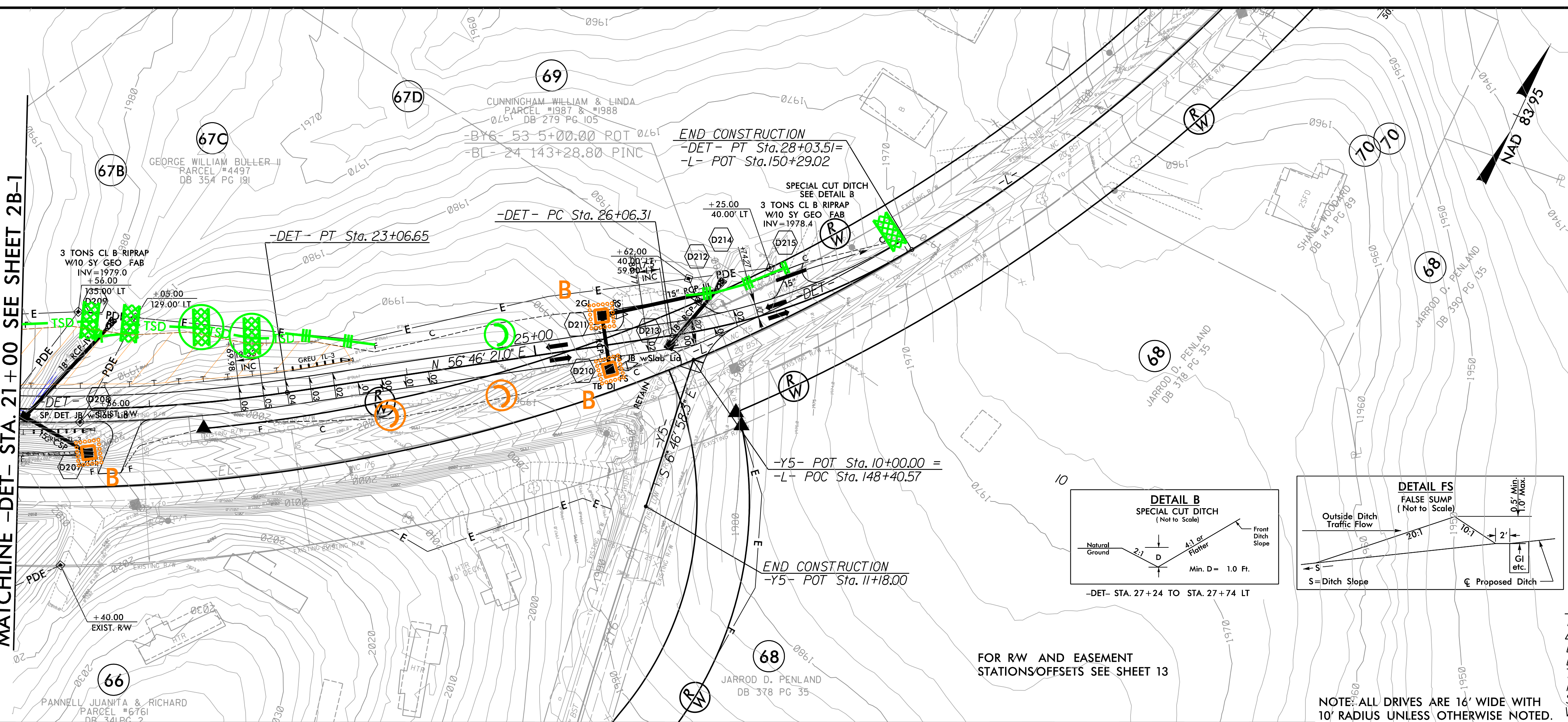


PROJECT REFERENCE NO. R-5742	SHEET NO. EC-23/CON.-2B-2
RW SHEET NO.	HYDRAULICS ENGINEER
ROADWAY DESIGN ENGINEER	

MATCHLINE -DET- STA. 21+00 SEE SHEET 2B-1

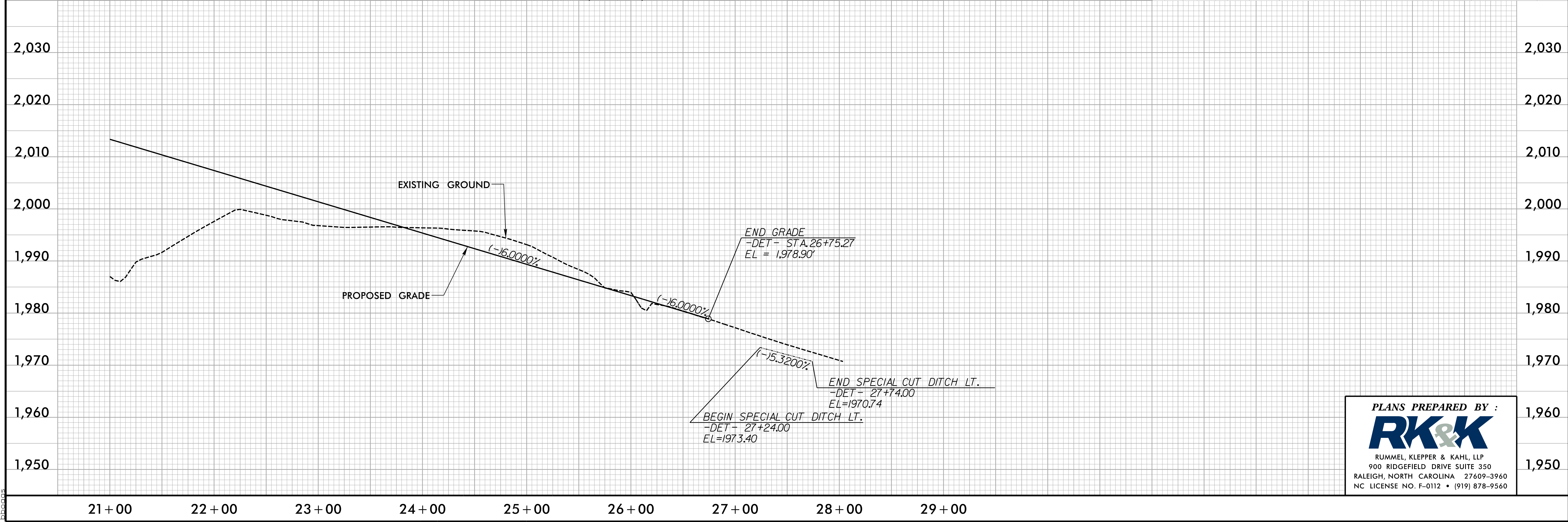


-DET-

PI Sta 21+34.35	PI Sta 27+06.21
$\Delta = 16' 34' 11.7''$ (LT)	$\Delta = 22' 35' 51.5''$ (LT)
$D = 4' 46' 28.7''$	$D = 11' 27' 33.0''$
$L = 347.04'$	$L = 197.20'$
$T = 174.74'$	$T = 99.90'$
$R = 1,200.00'$	$R = 500.00'$
$SE = 0.06$	
$V = 40$ mph	

FOR RW AND EASEMENT STATIONS/OFFSETS SEE SHEET 13

NOTE: ALL DRIVES ARE 16' WIDE WITH 10' RADIUS UNLESS OTHERWISE NOTED.



PLANS PREPARED BY :

RUMMEL, KLEPPER & KAHL, LLP
 900 RIDGEFIELD DRIVE SUITE 350
 RALEIGH, NORTH CAROLINA 27609-3960
 NC LICENSE NO. F-0112 • (919) 878-9560

8/17/99

R:\21\2018\Public\CA\DD\PSH\ERoston\Control\1R-5742_EC-det_psh-2B-3F.mxd.dgn