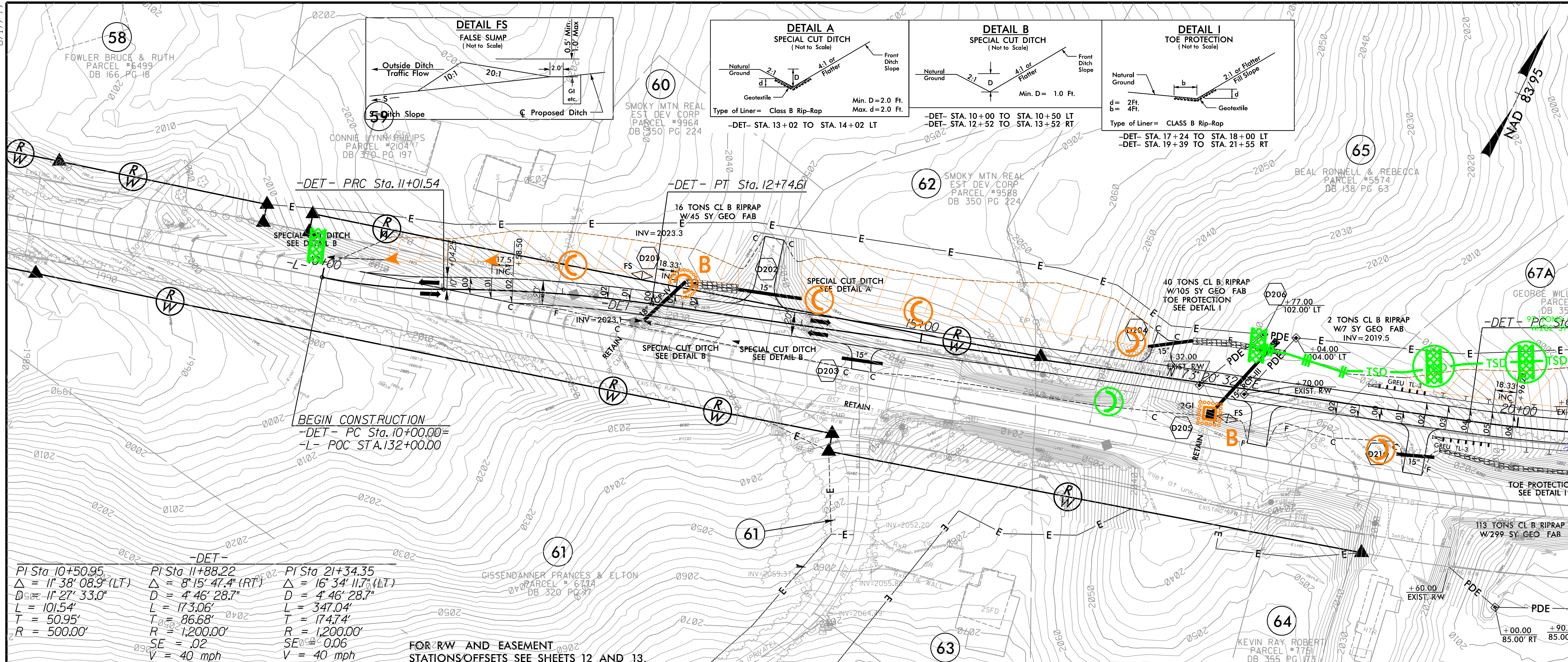


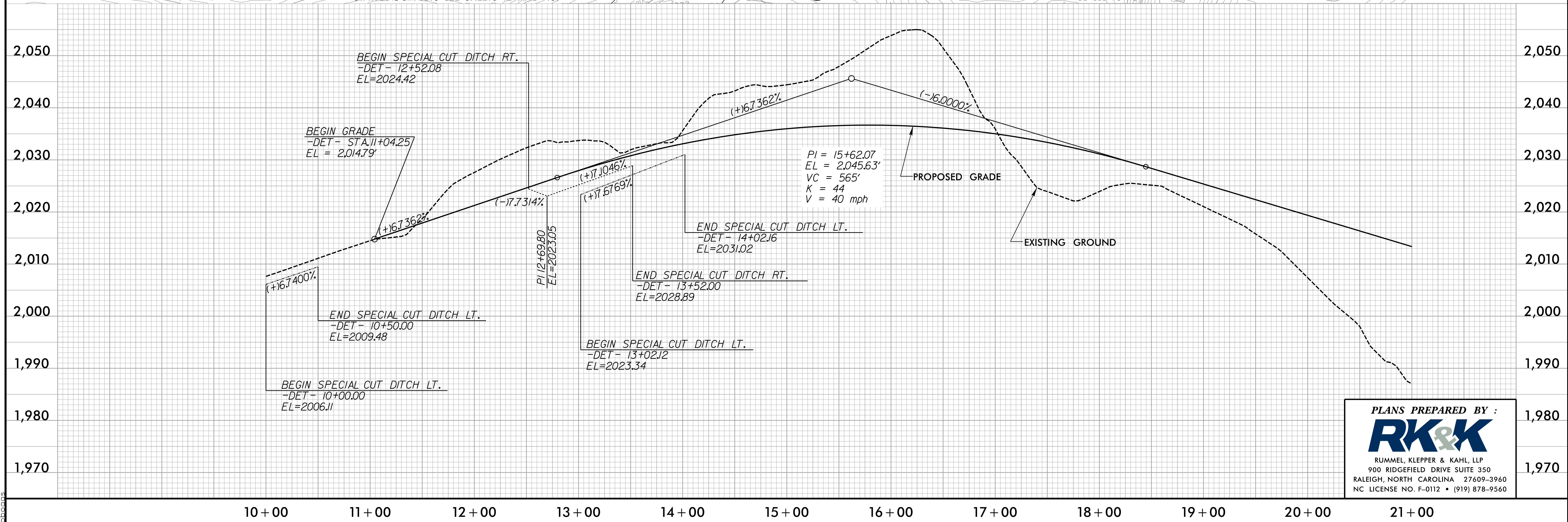
PROJECT REFERENCE NO. R-5742	SHEET NO. EC-22/CON.-2B-1
RW SHEET NO.	
ROADWAY DESIGN ENGINEER	HYDRAULICS ENGINEER

NOTE: ALL DRIVES ARE 16' WIDE WITH 10' RADIUS UNLESS OTHERWISE NOTED.



FOR RW AND EASEMENT STATIONS/OFFSETS SEE SHEETS 12 AND 13.

-DET-		-DET-		-DET-	
PI Sta	Δ	PI Sta	Δ	PI Sta	Δ
10+50.95	11° 38' 08.9" (LT)	11+88.22	8° 15' 47.4" (RT)	21+34.35	16° 34' 11.7" (LT)
D = 11' 27" 33.0"		D = 4' 46" 28.7"		D = 4' 46" 28.7"	
L = 101.54'		L = 173.06'		L = 347.04'	
T = 50.95'		T = 86.68'		T = 174.74'	
R = 500.00'		R = 1,200.00'		R = 1,200.00'	
SE = .02		SE = .006		SE = .006	
V = 40 mph		V = 40 mph		V = 40 mph	



PLANS PREPARED BY :

RUMMEL, KLEPPER & KAHL, LLP
 900 RIDGEFIELD DRIVE SUITE 350
 RALEIGH, NORTH CAROLINA 27609-3960
 NC LICENSE NO. F-0112 • (919) 878-9560

8.17.99
 R:\Hydraulics\CADD\PSH\Erosion Control\R-5742_EC_det_psh2B-2F.mxd.dgn
 12/21/2018