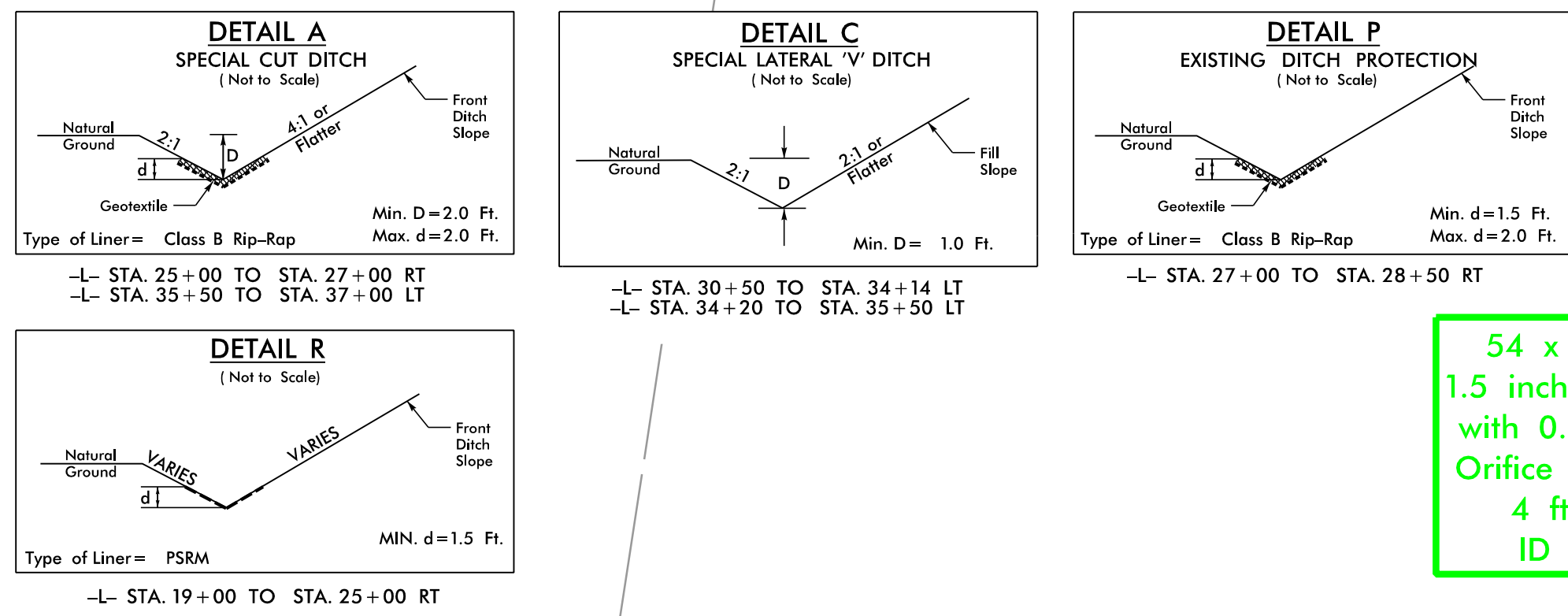
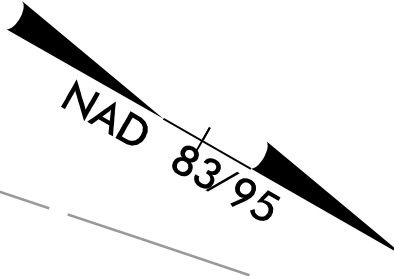
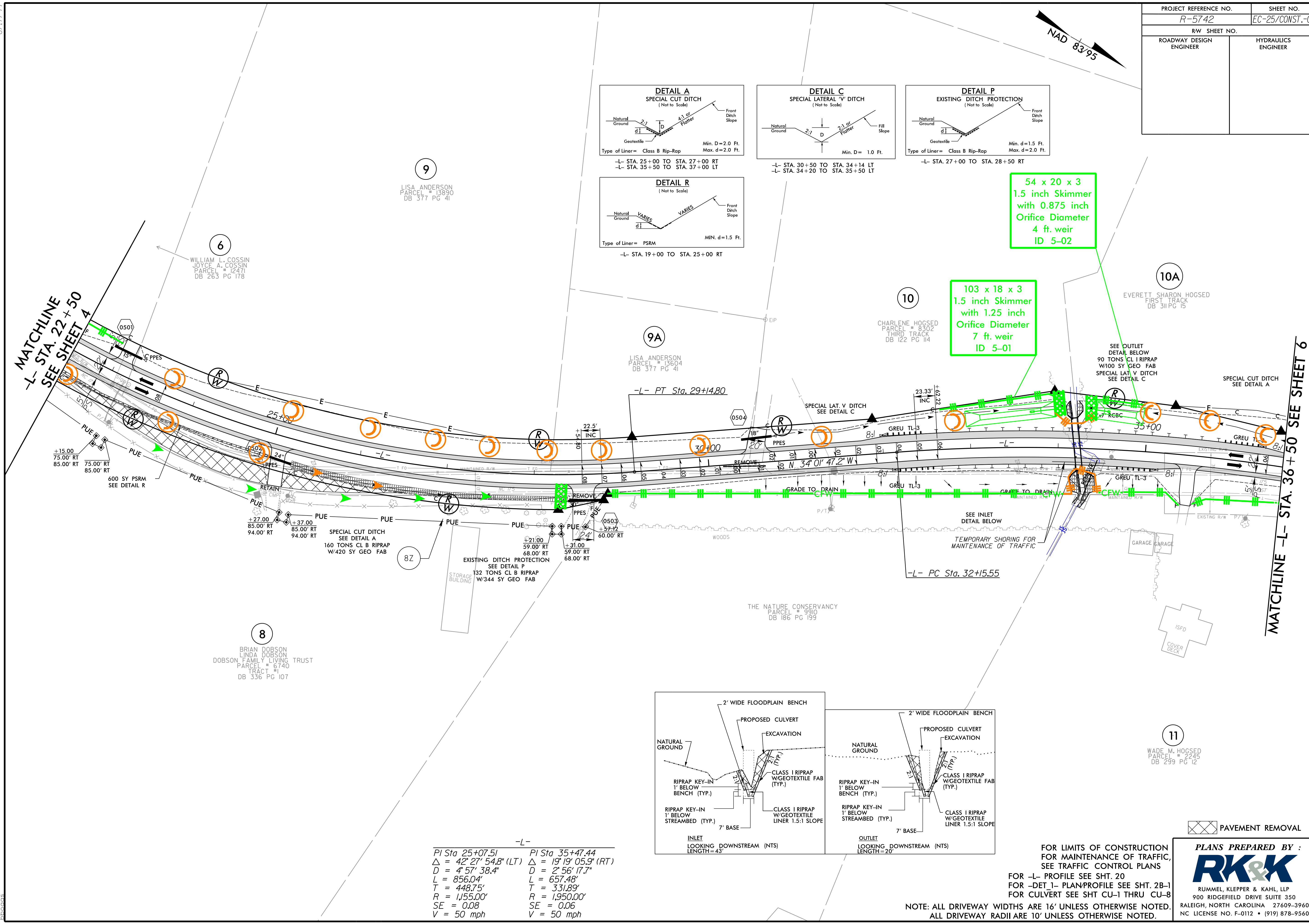


PROJECT REFERENCE NO.	SHEET NO.
R-5742	EC-25/CONST.-05
RW SHEET NO.	
ROADWAY DESIGN ENGINEER	HYDRAULICS ENGINEER

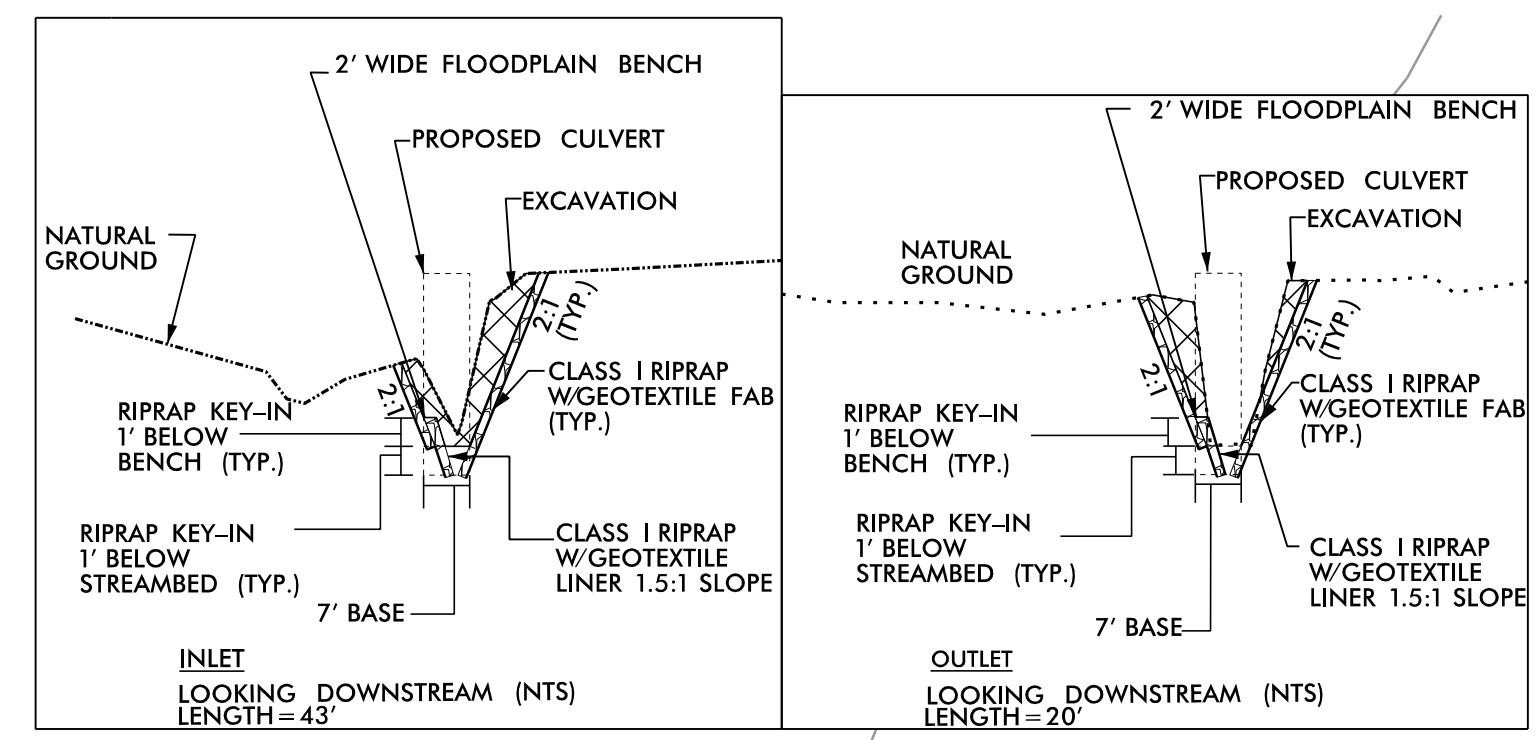


54 x 20 x 3
1.5 inch Skimmer
with 0.875 inch
Orifice Diameter
4 ft. weir
ID 5-02

103 x 18 x 3
1.5 inch Skimmer
with 1.25 inch
Orifice Diameter
7 ft. weir
ID 5-01



PI Sta 25+07.51	PI Sta 35+47.44
$\Delta = 42^\circ 27' 54.8''$ (LT)	$\Delta = 19^\circ 19' 05.9''$ (RT)
D = 4' 57' 38.4"	D = 2' 56' 17.7"
L = 856.04'	L = 657.48'
T = 448.75'	T = 331.89'
R = 1,155.00'	R = 1,950.00'
SE = 0.08	SE = 0.06
V = 50 mph	V = 50 mph



FOR LIMITS OF CONSTRUCTION FOR MAINTENANCE OF TRAFFIC, SEE TRAFFIC CONTROL PLANS

FOR -L- PROFILE SEE SHT. 20

FOR -DET. 1- PLAN/PROFILE SEE SHT. 2B-1

FOR CULVERT SEE SHT CU-1 THRU CU-8

NOTE: ALL DRIVEWAY WIDTHS ARE 16' UNLESS OTHERWISE NOTED. ALL DRIVEWAY RADII ARE 10' UNLESS OTHERWISE NOTED.

PAVEMENT REMOVAL

PLANS PREPARED BY :

RUMMEL, KLEPPER & KAHL, LLP
900 RIDGEFIELD DRIVE SUITE 350
RALEIGH, NORTH CAROLINA 27609-3960
NC LICENSE NO. F-0112 • (919) 878-9560

8/17/99
R:\Hydro\plans\EC-25\Const\EC-25-Const.dgn
R:\Hydro\plans\EC-25\Const\EC-25-Const.dgn