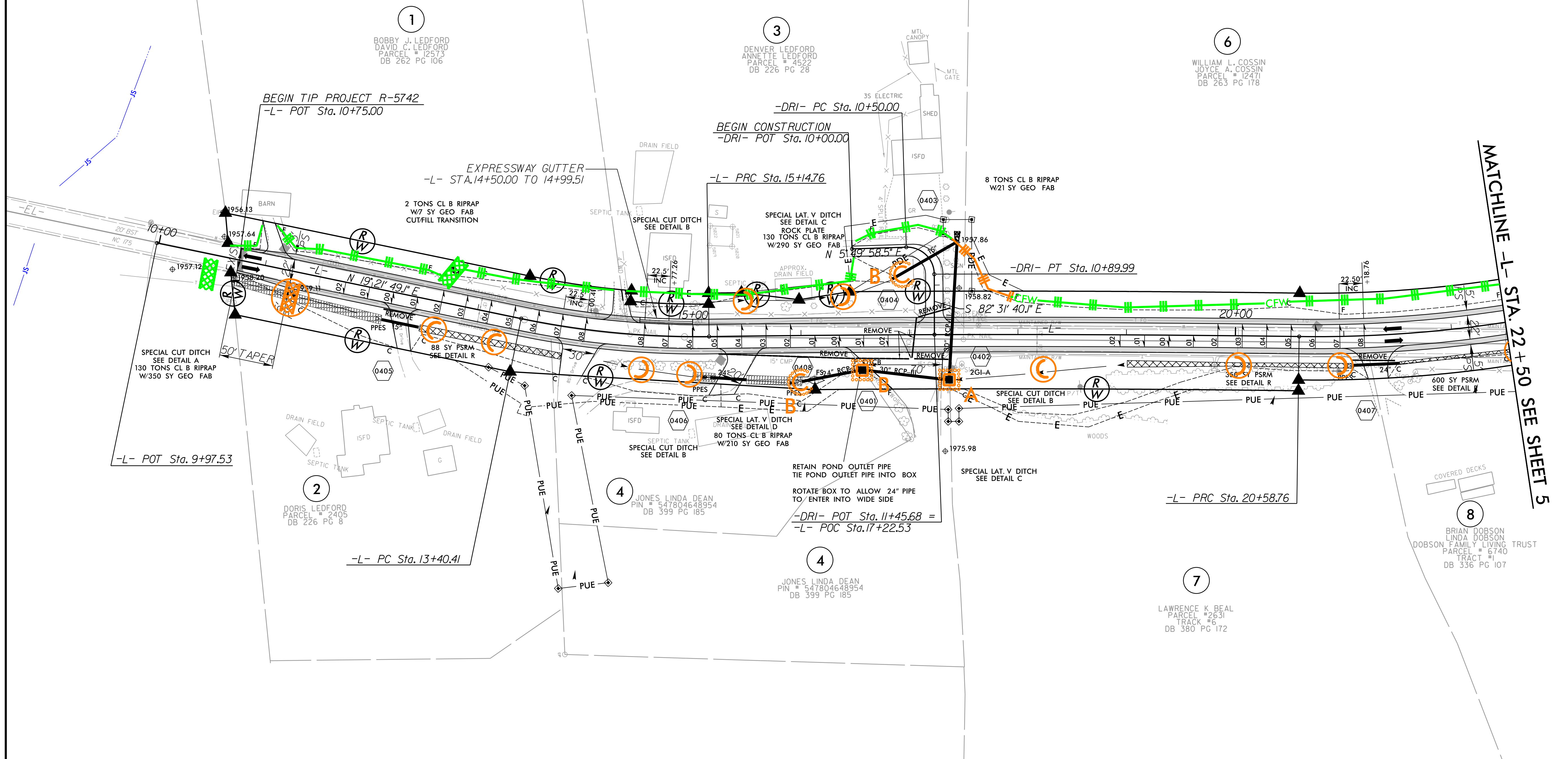
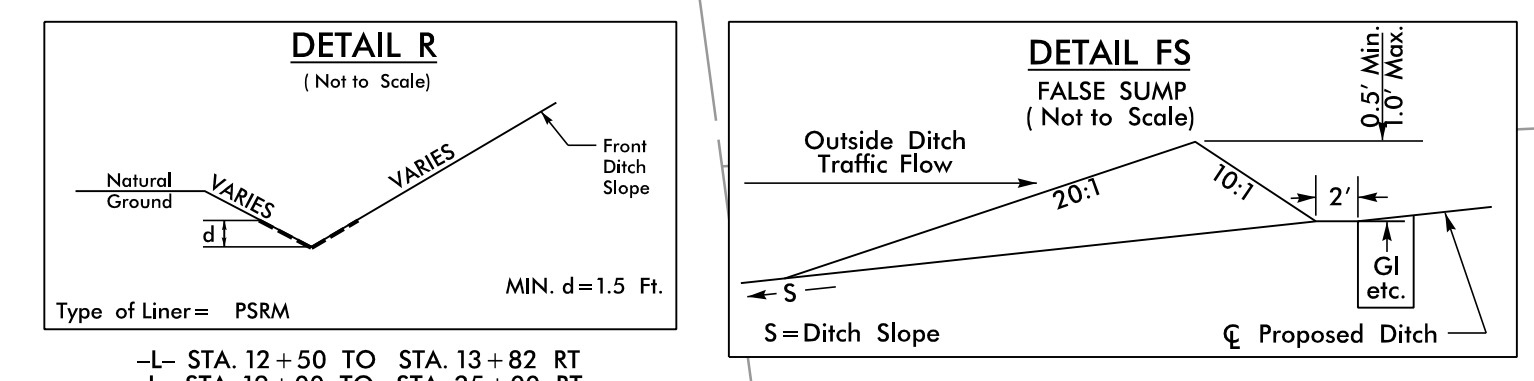
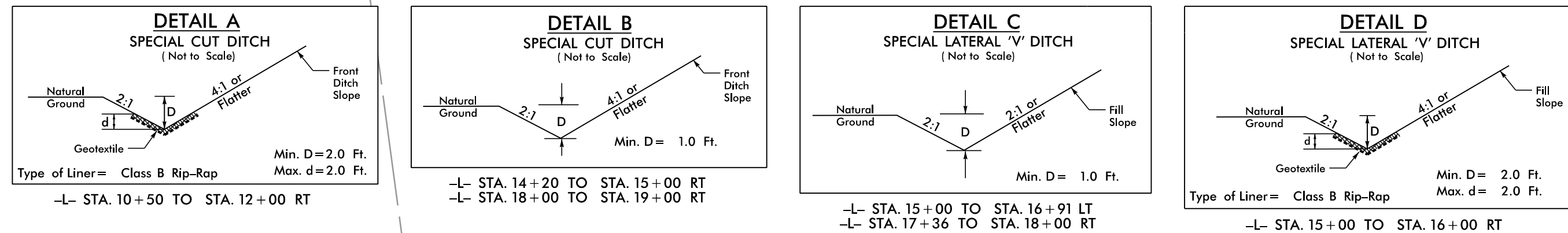


PROJECT REFERENCE NO.	SHEET NO.
R-5742	EC-24/CONST.-04
RW SHEET NO.	
ROADWAY DESIGN ENGINEER	HYDRAULICS ENGINEER

NAD 83/95



-L-			-DRI-		
PI Sta 14+27.93	PI Sta 17+86.78	PI Sta 24+58.07	PI Sta 10+75.73		
$\Delta = 12^{\circ} 29' 12.0''$ (LT)	$\Delta = 1^{\circ} 33' 30.5''$ (RT)	$\Delta = 38^{\circ} 08' 32.2''$ (LT)	$\Delta = 9^{\circ} 38' 21.4''$ (RT)		
D = 7' 09" 43.1"	D = 0' 17" 11.3"	D = 4' 57" 38.4"	D = 229' 10" 59.2"		
L = 174.35'	L = 544.01'	L = 768.89'	L = 39.99'		
T = 87.52'	T = 272.02'	T = 399.30'	T = 25.73'		
R = 800.00'	R = 20,000.00'	R = 1,170.00'	R = 25.00'		
SE = 0.08	SE = NC	SE = 0.08			
V = 50 mph	V = 50 mph	V = 50 mph			

FOR -L- PROFILE SEE SHT. 20
 FOR -DRI- PROFILE SEE SHT. 28
 NOTE: ALL DRIVEWAY WIDTHS ARE 16' UNLESS OTHERWISE NOTED.
 ALL DRIVEWAY RADII ARE 10' UNLESS OTHERWISE NOTED.

PLANS PREPARED BY :

RUMMEL, KLEPPER & KAHL, LLP
 900 RIDGEFIELD DRIVE SUITE 350
 RALEIGH, NORTH CAROLINA 27609-3960
 NC LICENSE NO. F-0112 • (919) 878-9560

8/17/99
 R:\Hydraulics\CADD\PSH\Erosion_Control\NR-5742_EC_psh20.dgn
 12/21/2018