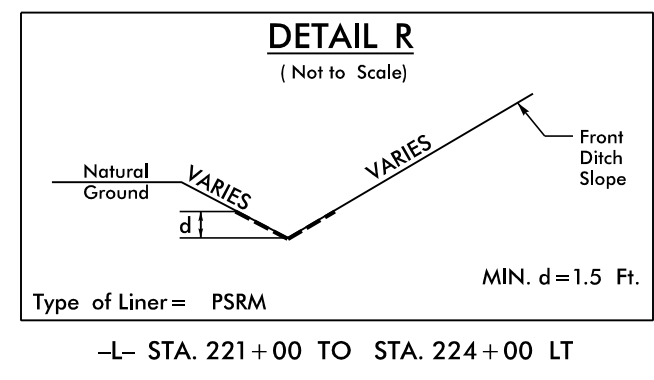
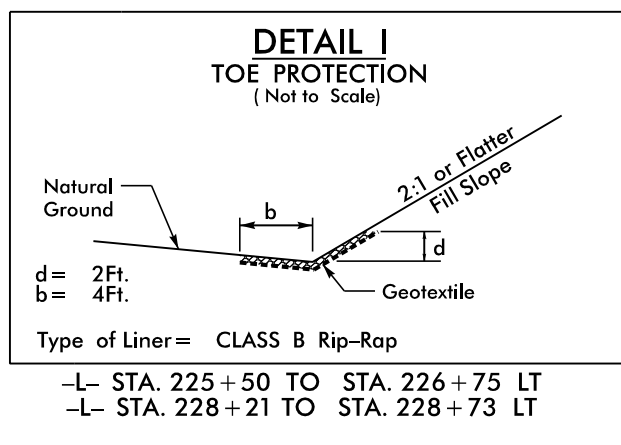
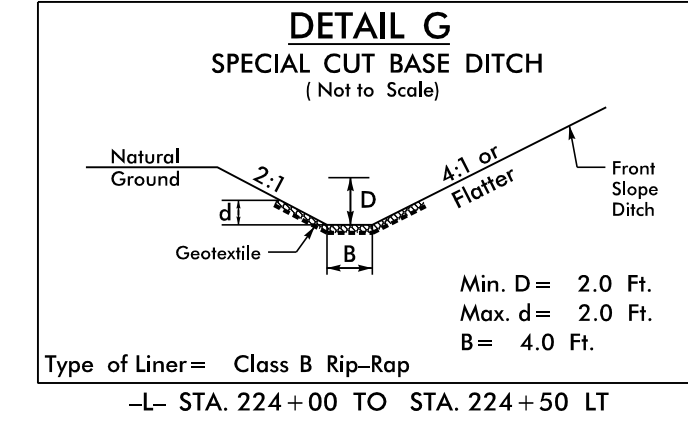
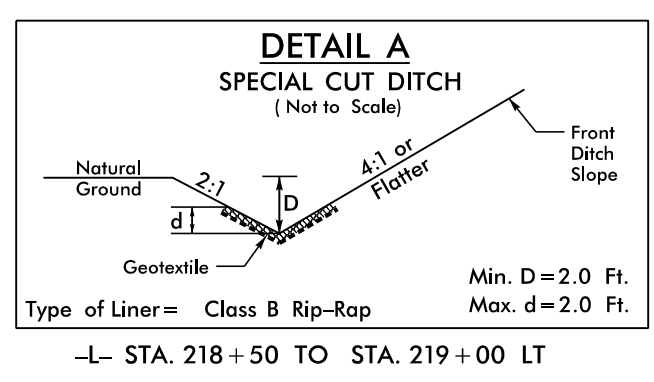


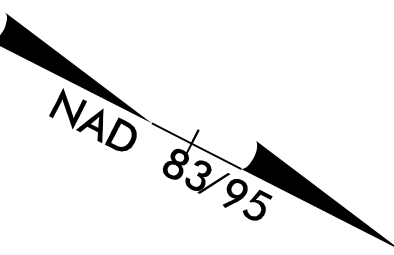
8/17/99
R:\Hydro\Projects\5742\EROSION\Control\NR-5742_EC_psh19.dgn
12/21/2018

MATCHLINE -L- STA. 217+00 SEE SHEET 18

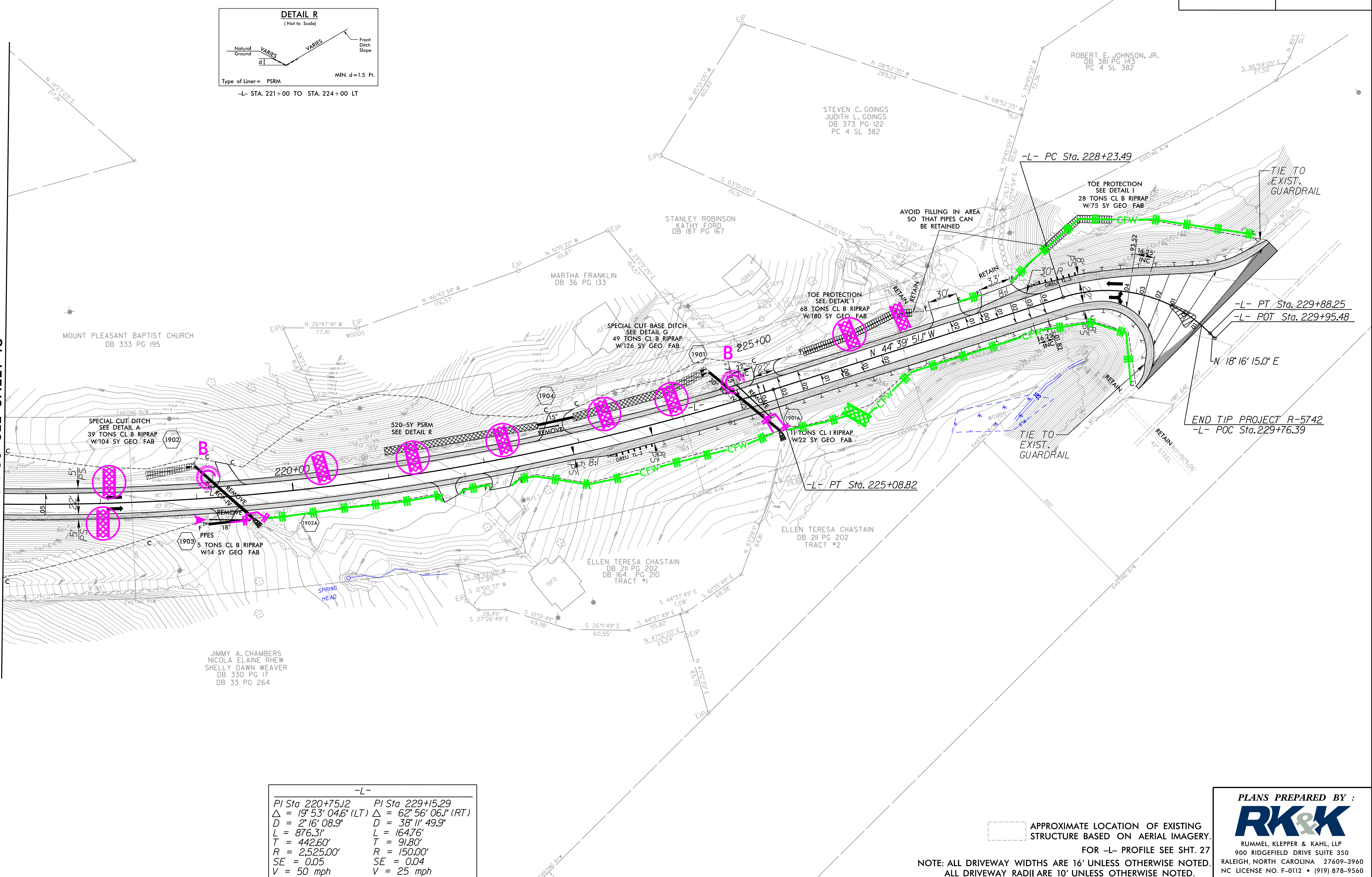


CLEARING AND GRUBBING
EROSION CONTROL FOR
CONSTRUCTION SHEET 19

NOTE:
PLACE TEMPORARY ROCK SEDIMENT DAMS TYPE - B
AND TEMPORARY ROCK SILT CHECKS TYPE - A AT
DRAINAGE OUTLETS.



PROJECT REFERENCE NO. R-5742	SHEET NO. EC-21/CONST.-19
RW SHEET NO.	
ROADWAY DESIGN ENGINEER	HYDRAULICS ENGINEER



-L-	
PI Sta 220+75.12	PI Sta 229+15.29
$\Delta = 19^{\circ} 53' 04.6''$ (LT)	$\Delta = 62^{\circ} 56' 06.1''$ (RT)
$D = 2' 16' 08.9''$	$D = 38' 11' 49.9''$
$L = 876.31'$	$L = 164.76'$
$T = 442.60'$	$T = 91.80'$
$R = 2,525.00'$	$R = 150.00'$
$SE = 0.05$	$SE = 0.04$
$V = 50$ mph	$V = 25$ mph

APPROXIMATE LOCATION OF EXISTING
STRUCTURE BASED ON AERIAL IMAGERY.
FOR -L- PROFILE SEE SHT. 27

NOTE: ALL DRIVEWAY WIDTHS ARE 16' UNLESS OTHERWISE NOTED.
ALL DRIVEWAY RADII ARE 10' UNLESS OTHERWISE NOTED.

PLANS PREPARED BY :

RUMMEL, KLEPPER & KAHL, LLP
900 RIDGEFIELD DRIVE SUITE 350
RALEIGH, NORTH CAROLINA 27609-3960
NC LICENSE NO. F-0112 • (919) 878-9560