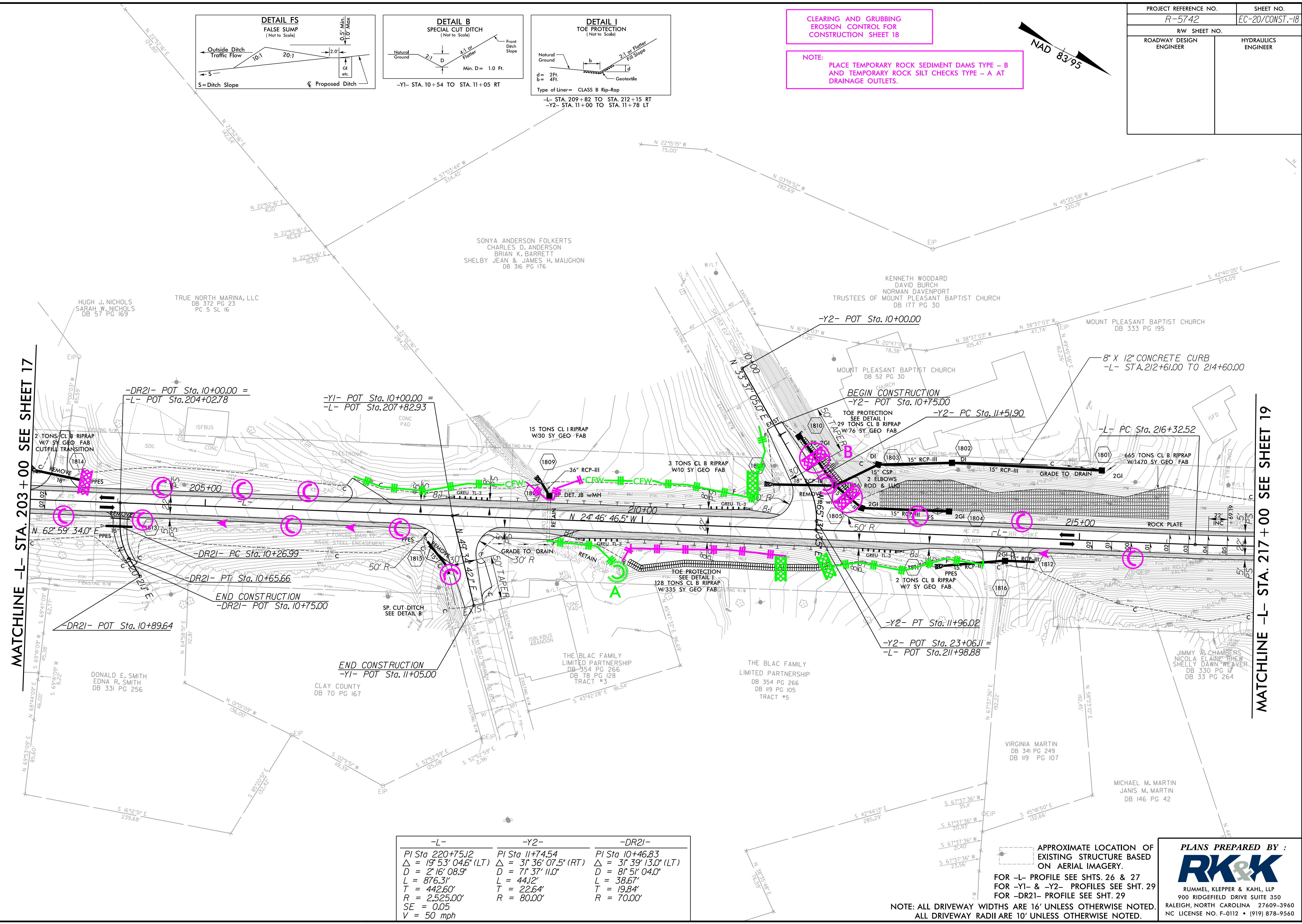
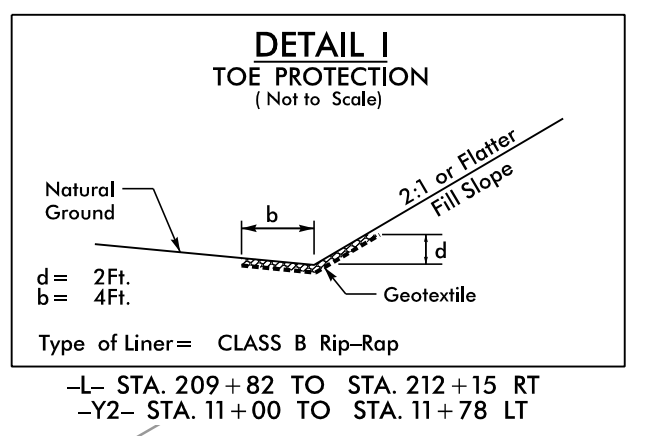
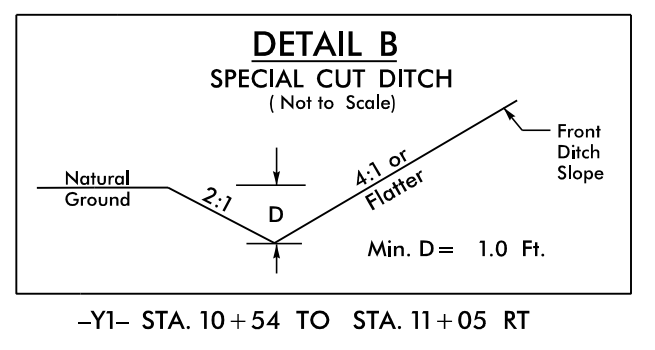
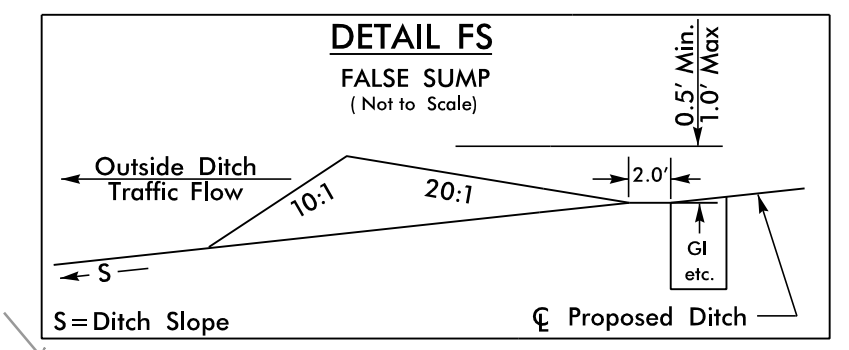
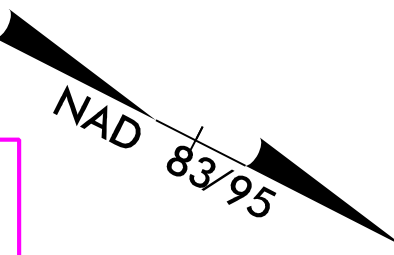


| | |
|-------------------------|---------------------|
| PROJECT REFERENCE NO. | SHEET NO. |
| R-5742 | EC-20/CONST.-18 |
| RW SHEET NO. | |
| ROADWAY DESIGN ENGINEER | HYDRAULICS ENGINEER |

CLEARING AND GRUBBING
EROSION CONTROL FOR
CONSTRUCTION SHEET 18

NOTE:
PLACE TEMPORARY ROCK SEDIMENT DAMS TYPE - B
AND TEMPORARY ROCK SILT CHECKS TYPE - A AT
DRAINAGE OUTLETS.



MATCHLINE -L- STA. 203 + 00 SEE SHEET 17

MATCHLINE -L- STA. 217 + 00 SEE SHEET 19

| -L- | -Y2- | -DR21- |
|--------------------------------|--------------------------------|--------------------------------|
| PI Sta 220+75.12 | PI Sta 11+74.54 | PI Sta 10+46.83 |
| $\Delta = 19' 53' 04.6''$ (LT) | $\Delta = 31' 36' 07.5''$ (RT) | $\Delta = 31' 39' 13.0''$ (LT) |
| D = 2' 16' 08.9" | D = 71' 37' 11.0" | D = 81' 51' 04.0" |
| L = 876.31' | L = 44.2' | L = 38.67' |
| T = 442.60' | T = 22.64' | T = 19.84' |
| R = 2,525.00' | R = 80.00' | R = 70.00' |
| SE = 0.05 | | |
| V = 50 mph | | |

APPROXIMATE LOCATION OF
EXISTING STRUCTURE BASED
ON AERIAL IMAGERY.

FOR -L- PROFILE SEE SHTS. 26 & 27
FOR -Y1- & -Y2- PROFILES SEE SHT. 29
FOR -DR21- PROFILE SEE SHT. 29

NOTE: ALL DRIVEWAY WIDTHS ARE 16' UNLESS OTHERWISE NOTED.
ALL DRIVEWAY RADII ARE 10' UNLESS OTHERWISE NOTED.

PLANS PREPARED BY :

RUMMEL, KLEPPER & KAHL, LLP
900 RIDGEFIELD DRIVE SUITE 350
RALEIGH, NORTH CAROLINA 27609-3960
NC LICENSE NO. F-0112 • (919) 878-9560

8.17.17.99
R:\Hydraulics\CADD\PSH\Erosion_Control\NR-5742_EC_psh18.dgn
12/21/2018