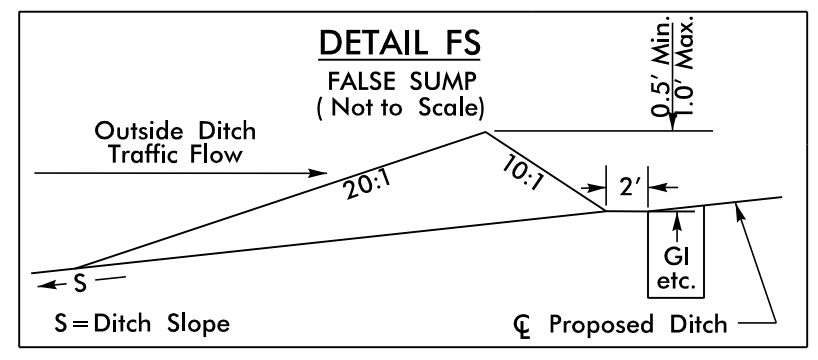
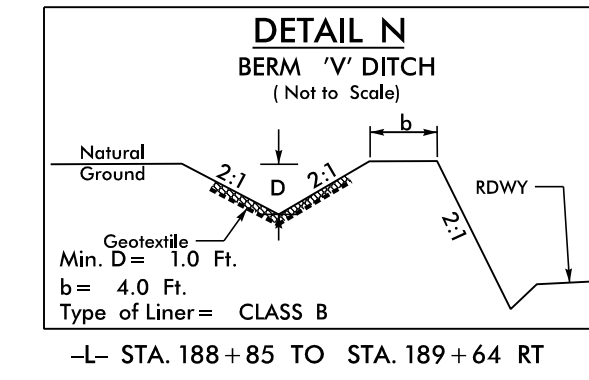
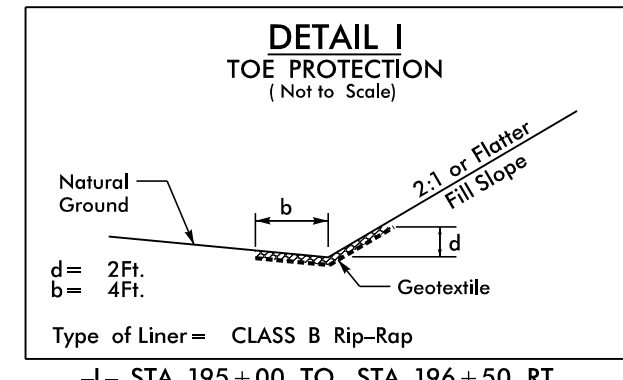
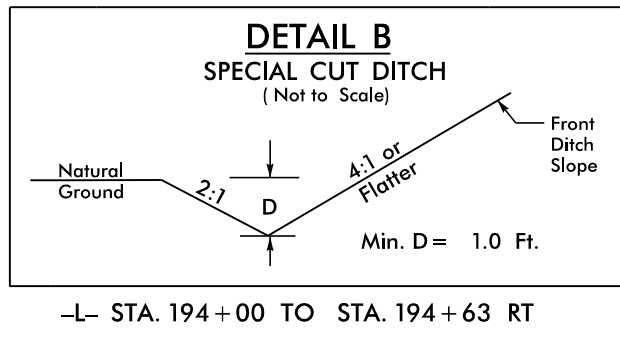
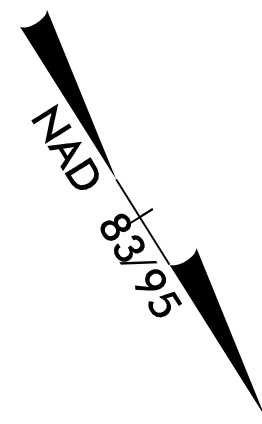


PROJECT REFERENCE NO.	SHEET NO.
R-5742	EC-19/CONST.-17
RW SHEET NO.	
ROADWAY DESIGN ENGINEER	HYDRAULICS ENGINEER



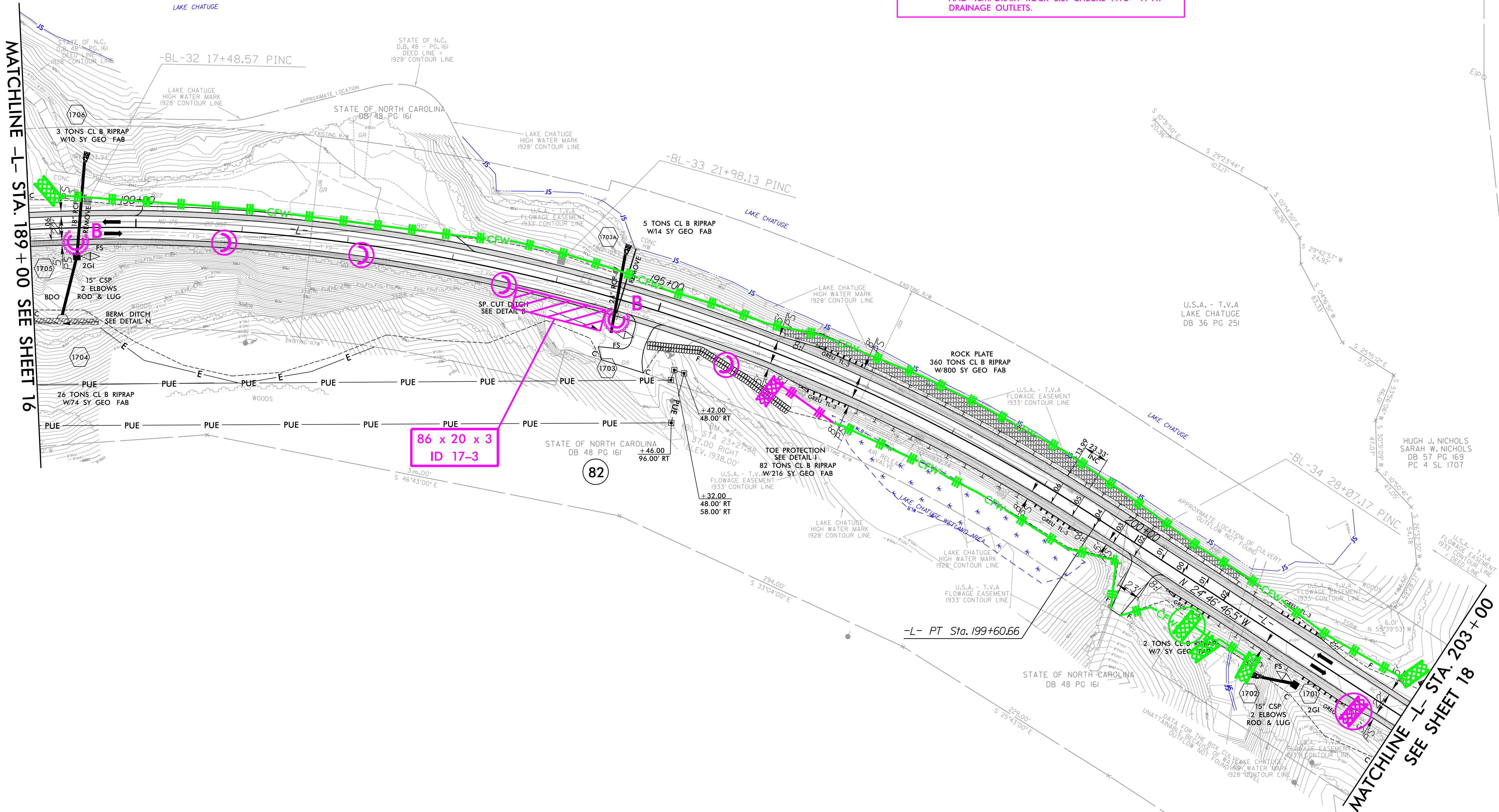
CLEARING AND GRUBBING
EROSION CONTROL FOR
CONSTRUCTION SHEET 17

NOTE:
PLACE TEMPORARY ROCK SEDIMENT DAMS - B
AND TEMPORARY ROCK SILT CHECKS TYPE - A AT
DRAINAGE OUTLETS.

TELEPHONE
FRONTIER COMMUNICATIONS
765 CHURCH STREET
MURPHY, N.C. 28906
828-837-5800

SEWER
CLAY COUNTY WATER & SEWER
33 MAIN ST.
HAYESVILLE, N.C.
828-389-1361

U.S.A. - T.V.A
LAKE CHATUGE
DB 36 PG 251



-L-

PI Sta. 192+07.18
$\Delta = 55^\circ 36' 35.8''$ (RT)
$D = 3' 22' 13.2''$
$L = 1,649.98'$
$T = 896.50'$
$R = 1,700.00'$
$SE = 0.06$
$V = 50$ mph

FOR -L- PROFILE SEE SHT. 26
NOTE: ALL DRIVEWAY WIDTHS ARE 16' UNLESS OTHERWISE NOTED.
ALL DRIVEWAY RADII ARE 10' UNLESS OTHERWISE NOTED.

PLANS PREPARED BY :

RUMMEL, KLEPPER & KAHL, LLP
900 RIDGEFIELD DRIVE SUITE 350
RALEIGH, NORTH CAROLINA 27609-3960
NC LICENSE NO. F-0112 • (919) 878-9560

8.17.799
R:\Hydraulics\CADD\PSH\Erosion_Control\NR-5742_EC.psh17.dgn