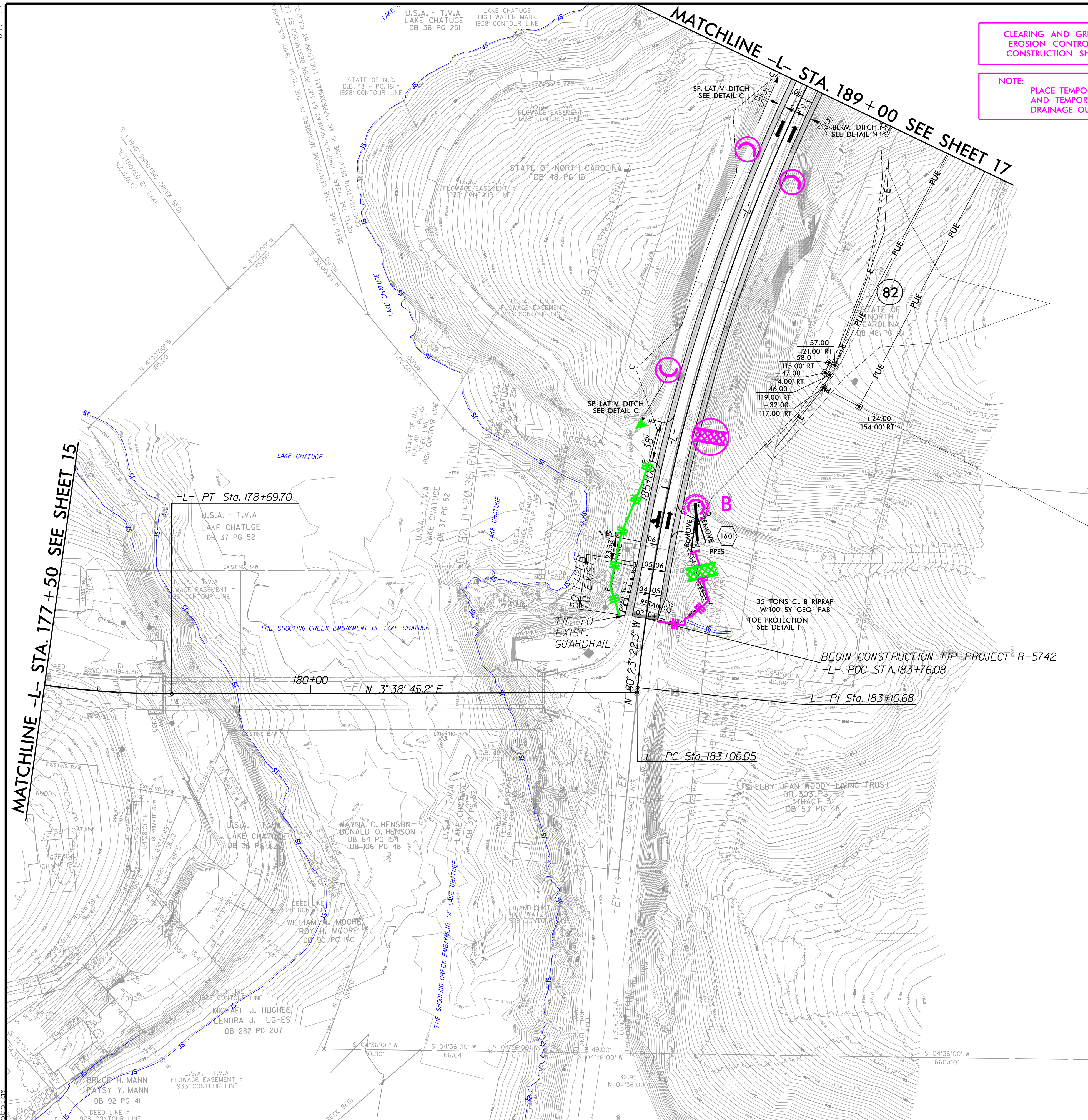
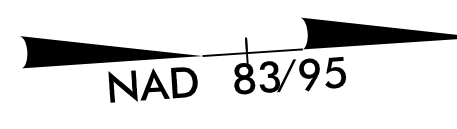


8/17/99  
 R:\Hydro\plans\CADD\PSH\Erosion Control\R-5742\_EC\_psh16.dgn  
 12/21/2018



CLEARING AND GRUBBING  
 EROSION CONTROL FOR  
 CONSTRUCTION SHEET 16

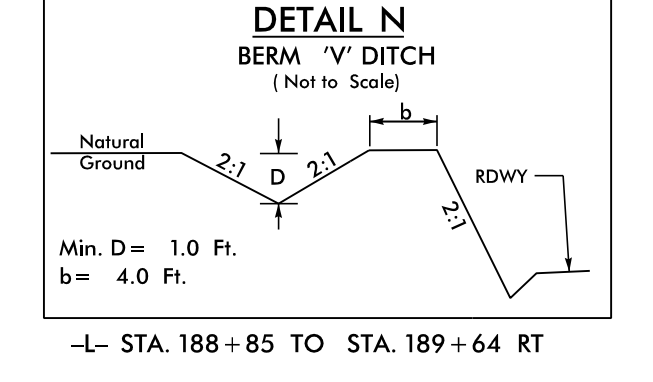
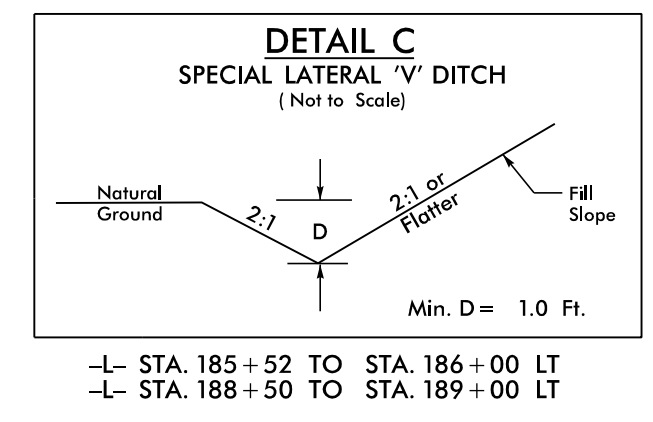
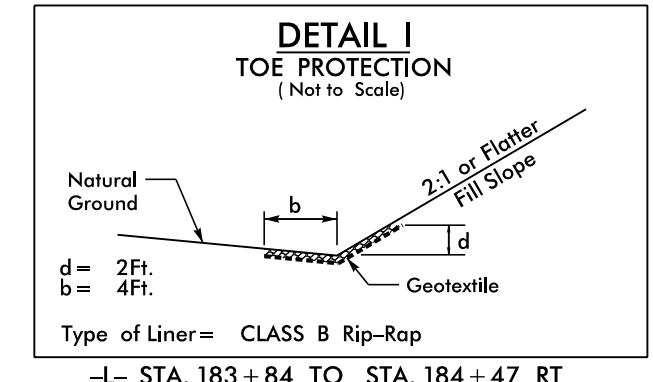
NOTE:  
 PLACE TEMPORARY ROCK SEDIMENT DAMS TYPE - B  
 AND TEMPORARY ROCK SILT CHECKS TYPE - A AT  
 DRAINAGE OUTLETS.



|                                 |                              |
|---------------------------------|------------------------------|
| PROJECT REFERENCE NO.<br>R-5742 | SHEET NO.<br>EC-18/CONST.-16 |
| RW SHEET NO.                    |                              |
| ROADWAY DESIGN ENGINEER         | HYDRAULICS ENGINEER          |

MATCHLINE -L- STA. 177 + 50 SEE SHEET 15

MATCHLINE -L- STA. 189 + 00 SEE SHEET 17



-L-

|  |  |
|--|--|
| PI Sta 177+07.00<br>Δ = 22° 12' 59.2" (LT)<br>D = 6' 44" 26.4"<br>L = 329.59'<br>T = 166.89'<br>R = 850.00'<br>SE = 0.08<br>V = 50 mph | PI Sta 192+07.18<br>Δ = 55° 36' 35.8" (RT)<br>D = 3' 22" 13.2"<br>L = 1,649.98'<br>T = 896.50'<br>R = 1,700.00'<br>SE = 0.06<br>V = 50 mph |
|--|--|

FOR -L- PROFILE SEE SHTS. 25 & 26  
 NOTE: ALL DRIVEWAY WIDTHS ARE 16' UNLESS OTHERWISE NOTED.  
 ALL DRIVEWAY RADII ARE 10' UNLESS OTHERWISE NOTED.

PLANS PREPARED BY :

RUMMEL, KLEPPER & KAHL, LLP  
 900 RIDGEFIELD DRIVE SUITE 350  
 RALEIGH, NORTH CAROLINA 27609-3960  
 NC LICENSE NO. F-0112 • (919) 878-9560