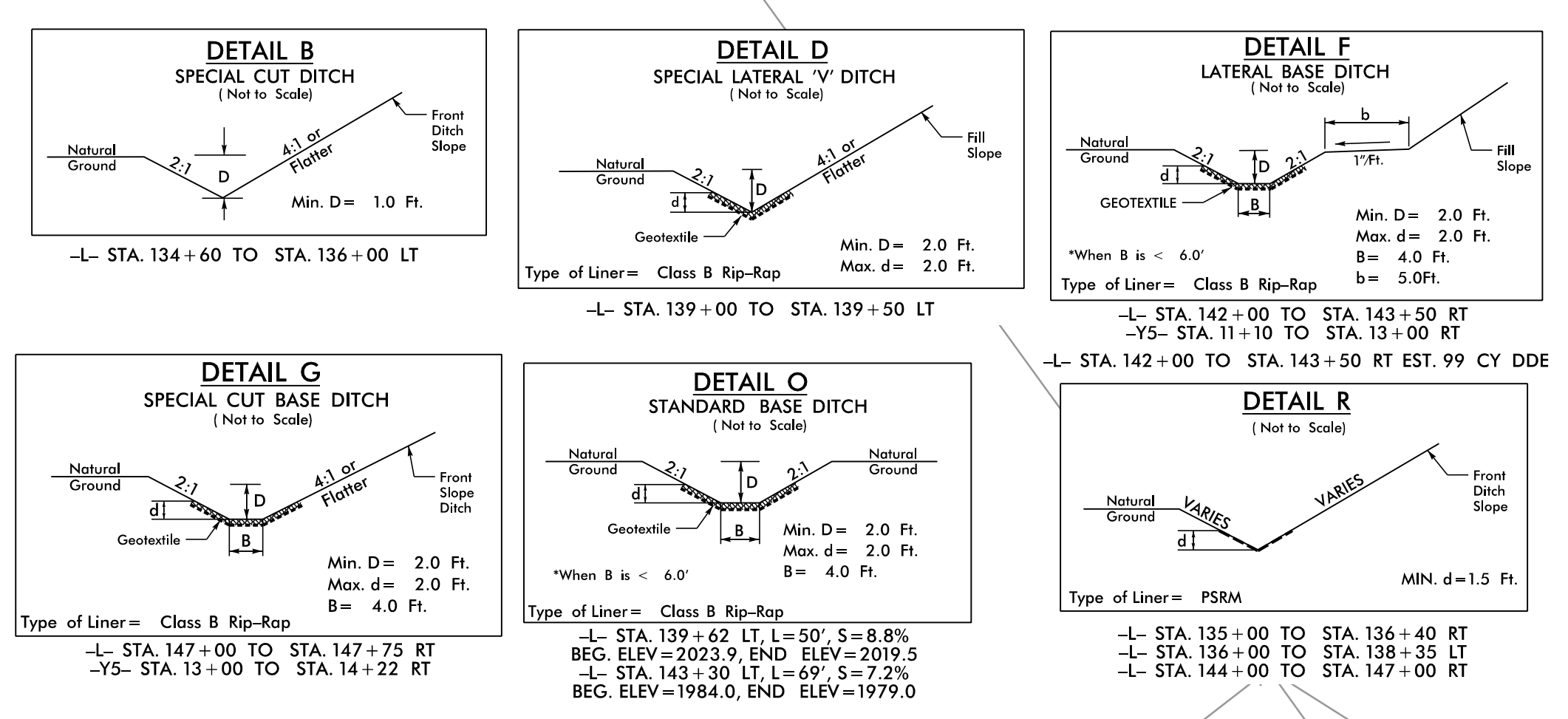


8/17/99
R:\Hydro\cadd\PSH\Erosion_Control\NR-5742_EC_psh13.dgn
12/21/2018

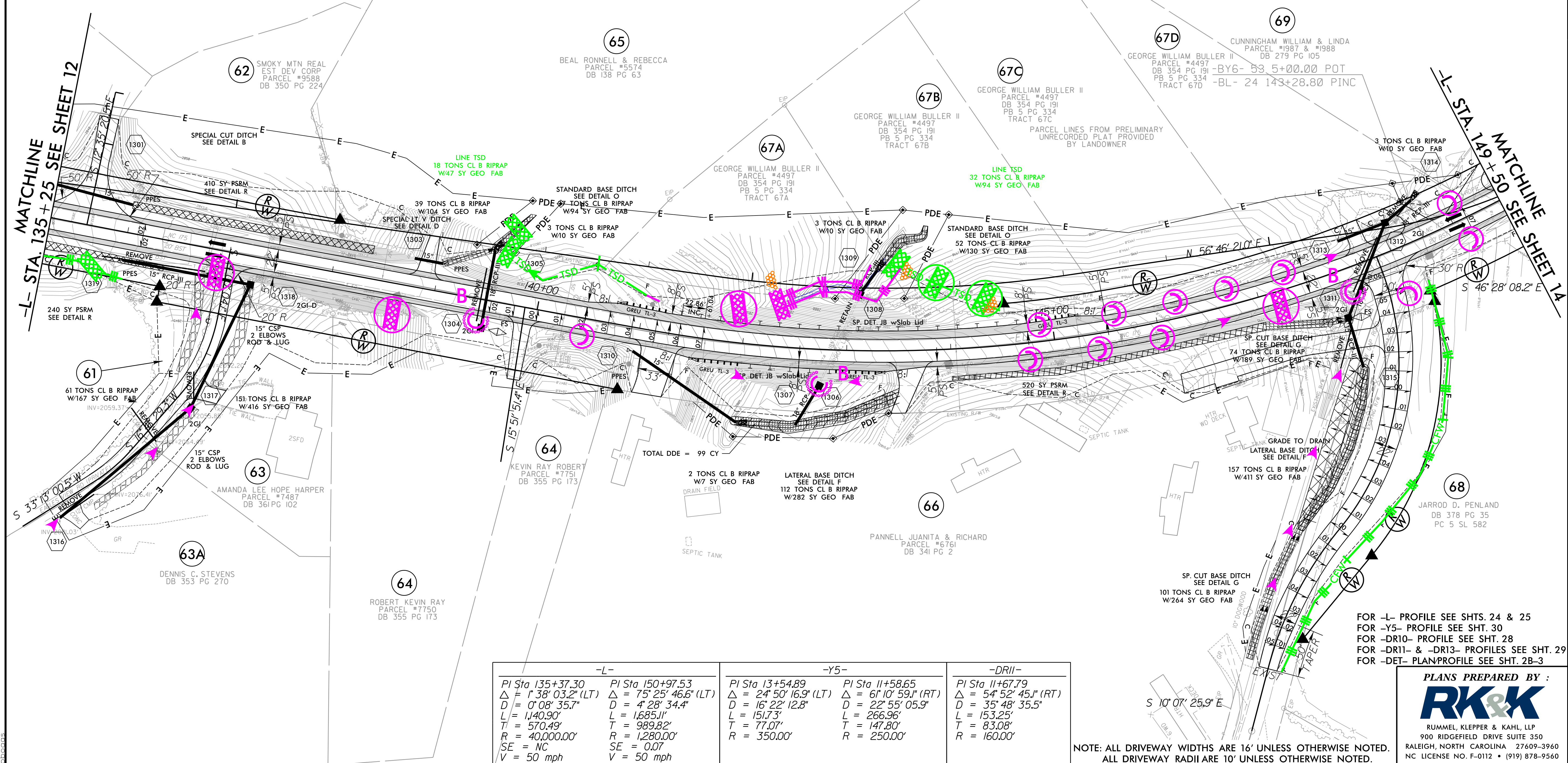
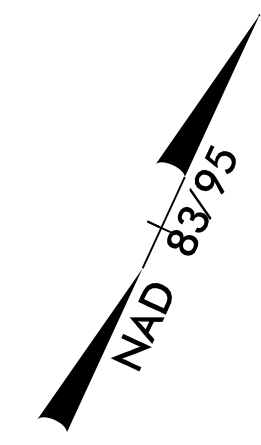
**CLEARING AND GRUBBING
EROSION CONTROL FOR
CONSTRUCTION SHEET 13**

NOTE:
PLACE TEMPORARY ROCK SEDIMENT DAMS TYPE - B
AND TEMPORARY ROCK SILT CHECKS TYPE - A AT
DRAINAGE OUTLETS.

**INSTALL PIPE(S) IN JURISDICTIONAL AREAS ACCORDING TO
NCDOT BEST MANAGEMENT PRACTICES FOR
CONSTRUCTION AND MAINTENANCE ACTIVITIES MANUAL.**



PROJECT REFERENCE NO. R-5742	SHEET NO. EC-15/CONST.-13
RW SHEET NO.	
ROADWAY DESIGN ENGINEER	HYDRAULICS ENGINEER



-L-		-Y5-		-DR11-	
PI Sta 135+37.30	PI Sta 150+97.53	PI Sta 13+54.89	PI Sta 11+58.65	PI Sta 11+67.79	
$\Delta = 1' 38" 03.2" (LT)$	$\Delta = 75' 25" 46.6" (LT)$	$\Delta = 24' 50" 16.9" (LT)$	$\Delta = 61' 10" 59.1" (RT)$	$\Delta = 54' 52" 45.1" (RT)$	
$D = 0' 08" 35.7"$	$D = 4' 28" 34.4"$	$D = 16' 22" 12.8"$	$D = 22' 55" 05.9"$	$D = 35' 48" 35.5"$	
$L = 1,140.90'$	$L = 1,685.11'$	$L = 151.73'$	$L = 266.96'$	$L = 153.25'$	
$T = 570.49'$	$T = 989.82'$	$T = 77.07'$	$T = 147.80'$	$T = 83.08'$	
$R = 40,000.00'$	$R = 1,280.00'$	$R = 350.00'$	$R = 250.00'$	$R = 160.00'$	
SE = NC	SE = 0.07				
V = 50 mph	V = 50 mph				

FOR -L- PROFILE SEE SHTS. 24 & 25
FOR -Y5- PROFILE SEE SHT. 30
FOR -DR10- PROFILE SEE SHT. 28
FOR -DR11- & -DR13- PROFILES SEE SHT. 29
FOR -DET- PLANPROFILE SEE SHT. 2B-3

PLANS PREPARED BY :
RK&K
RUMMEL, KLEPPER & KAHL, LLP
900 RIDGEFIELD DRIVE SUITE 350
RALEIGH, NORTH CAROLINA 27609-3960
NC LICENSE NO. F-0112 • (919) 878-9560

NOTE: ALL DRIVEWAY WIDTHS ARE 16' UNLESS OTHERWISE NOTED.
ALL DRIVEWAY RADII ARE 10' UNLESS OTHERWISE NOTED.