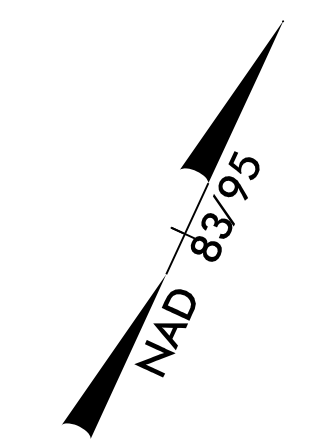
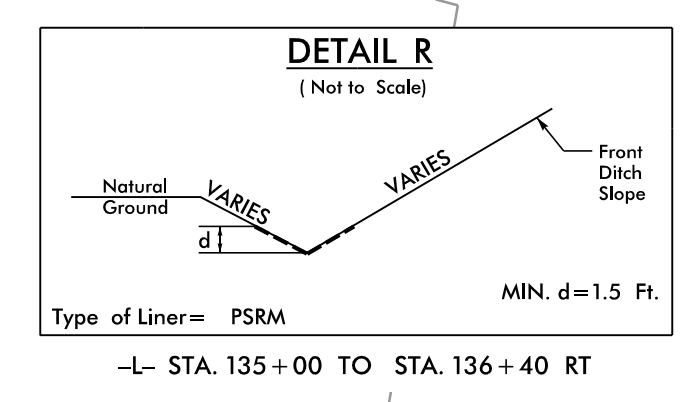
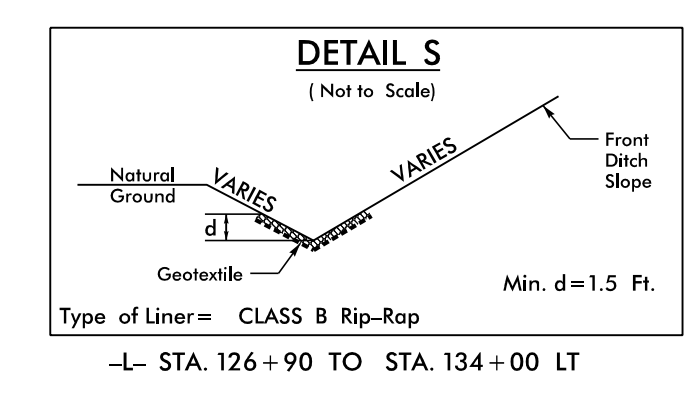
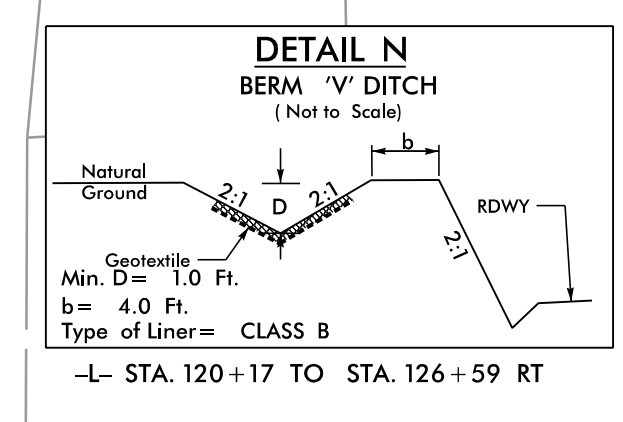
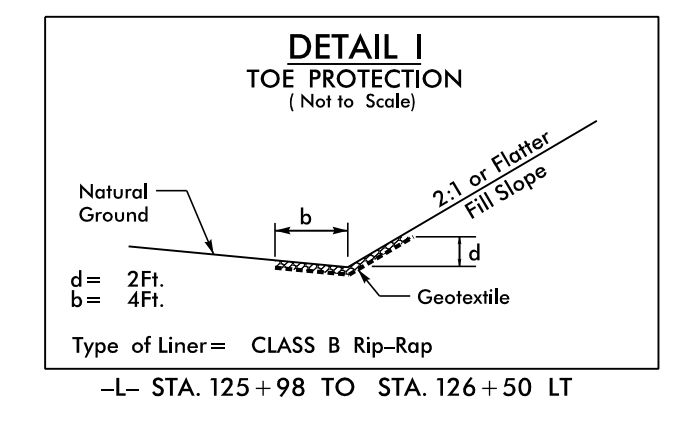
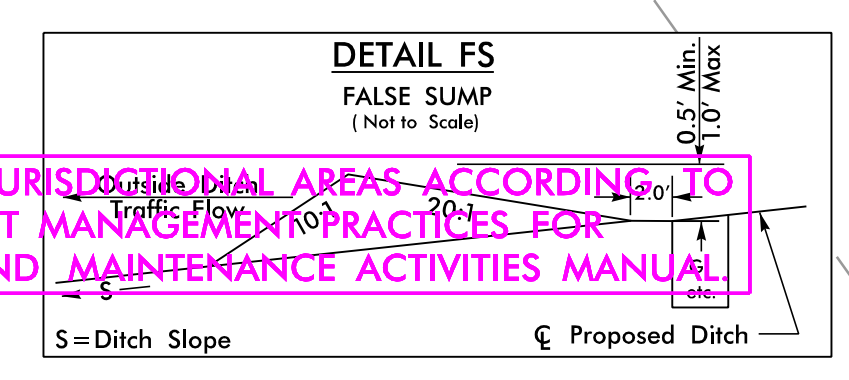
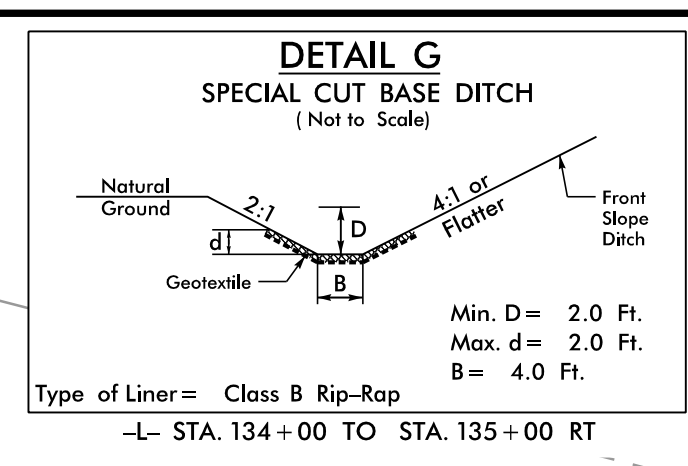
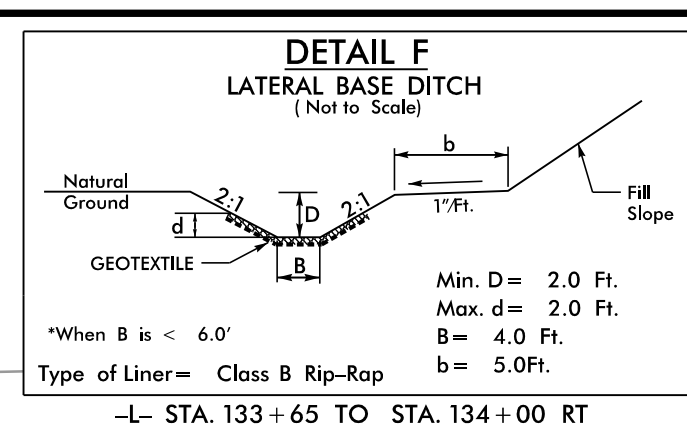
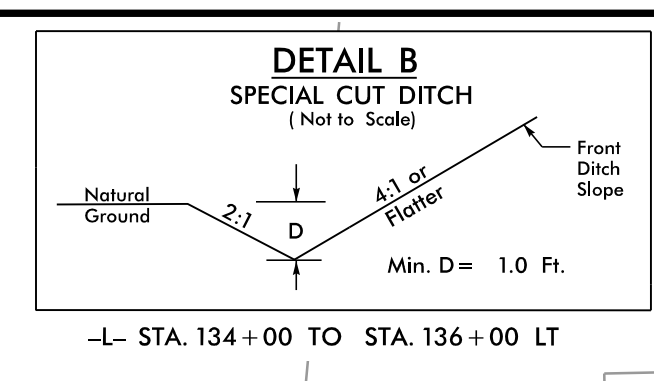


8/17/99
R:\Hydro\plans\CAOD\PSH\Erosion_Control\NR-5742_EC_psh12.dgn
12/21/2018

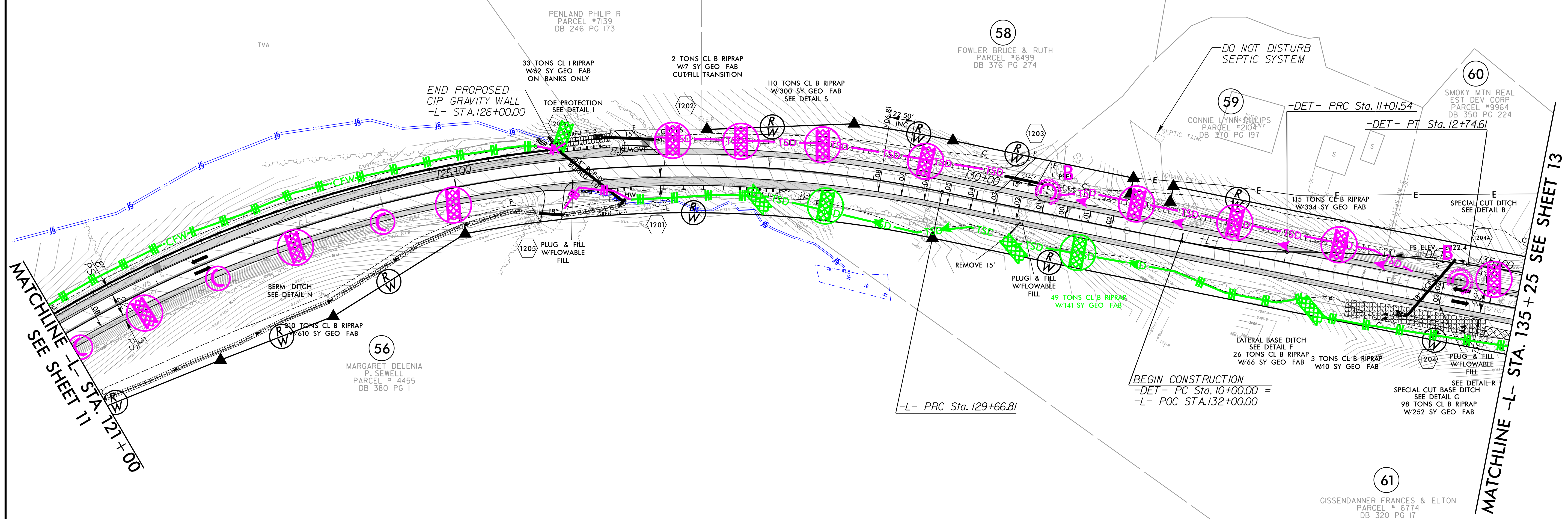
**CLEARING AND GRUBBING
EROSION CONTROL FOR
CONSTRUCTION SHEET 12**

NOTE:
PLACE TEMPORARY ROCK SEDIMENT DAMS TYPE - B
AND TEMPORARY ROCK SILT CHECKS TYPE - A AT
DRAINAGE OUTLETS.

**INSTALL PIPE(S) IN JURISDICTIONAL AREAS ACCORDING TO
NCDOT BEST MANAGEMENT PRACTICES FOR
CONSTRUCTION AND MAINTENANCE ACTIVITIES MANUAL**



PROJECT REFERENCE NO. R-5742	SHEET NO. EC-14/CONST.-12
RW SHEET NO.	
ROADWAY DESIGN ENGINEER	HYDRAULICS ENGINEER



-L-

PI Sta 124+82.88	PI Sta 135+37.30
$\Delta = 50^\circ 33' 06.6''$ (RT)	$\Delta = 1^\circ 38' 03.2''$ (LT)
D = 4' 51' 20.1"	D = 0' 08' 35.7"
L = 1,041.11'	L = 1,140.90'
T = 557.18'	T = 570.49'
R = 1,180.00'	R = 40,000.00'
SE = 0.08	SE = NC
V = 50 mph	V = 50 mph

FOR -L- PROFILE SEE SHTS. 23 & 24
FOR -DET- PLAN/PROFILE SEE SHT. 2B-2
FOR WALL 2 PROFILE SEE SHT. W-2

NOTE: ALL DRIVEWAY WIDTHS ARE 16' UNLESS OTHERWISE NOTED.
ALL DRIVEWAY RADII ARE 10' UNLESS OTHERWISE NOTED.

PLANS PREPARED BY :

RUMMEL, KLEPPER & KAHL, LLP
900 RIDGEFIELD DRIVE SUITE 350
RALEIGH, NORTH CAROLINA 27609-3960
NC LICENSE NO. F-0112 • (919) 878-9560