

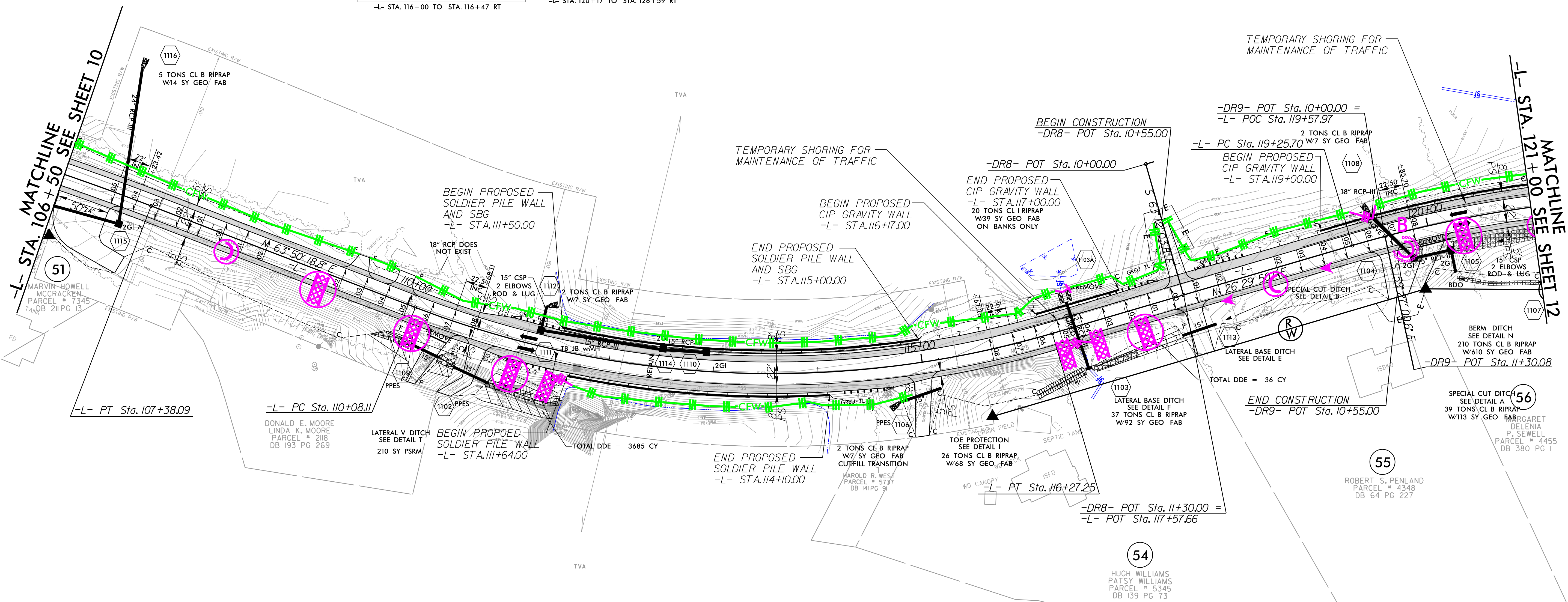
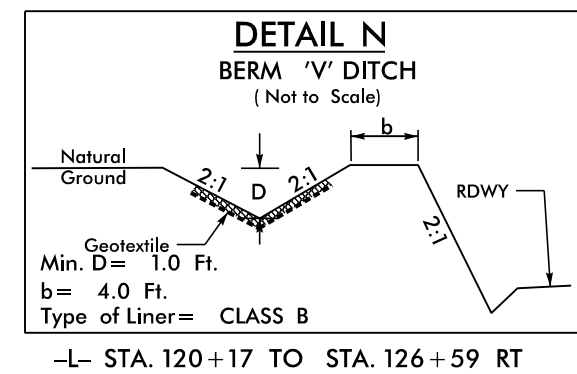
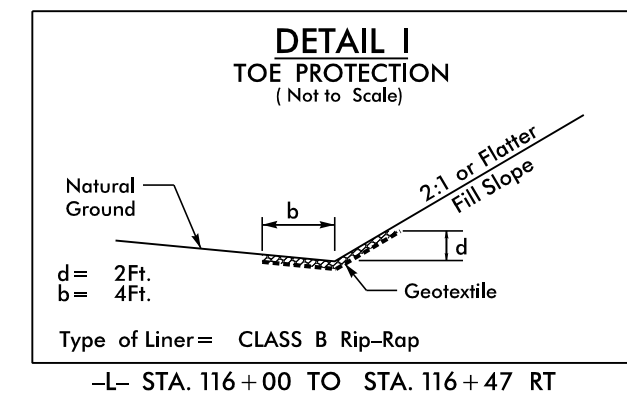
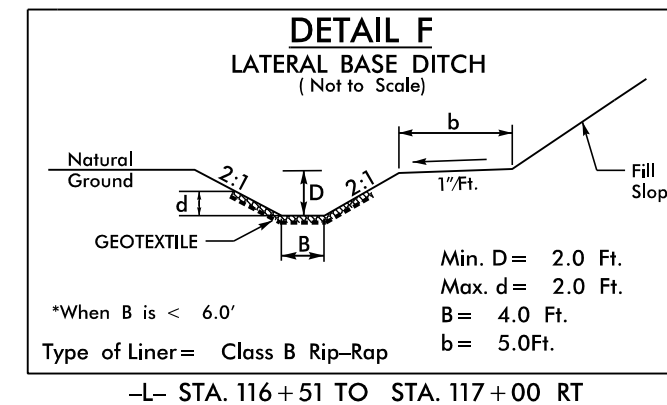
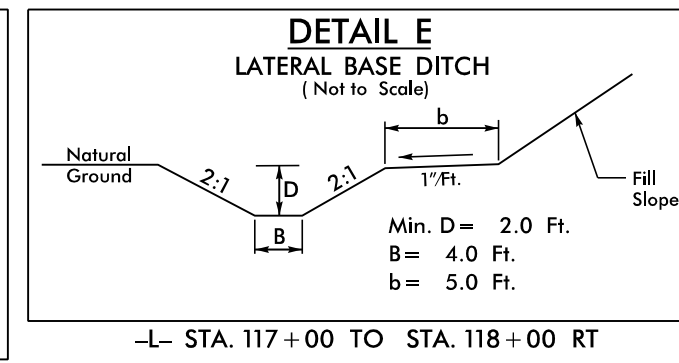
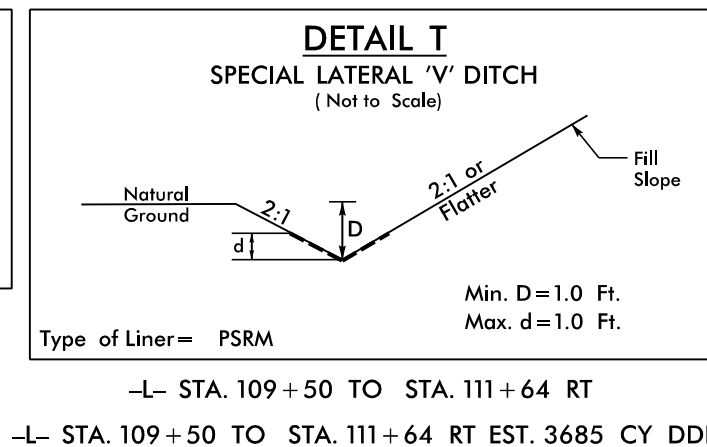
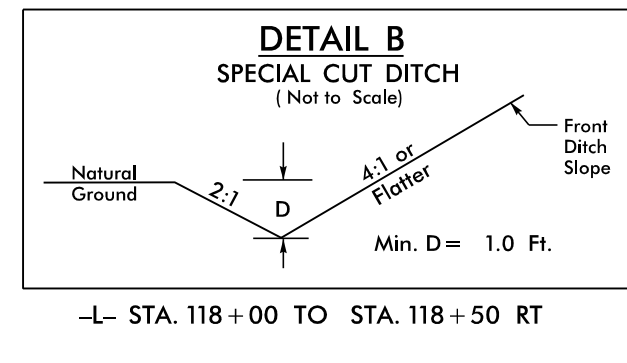
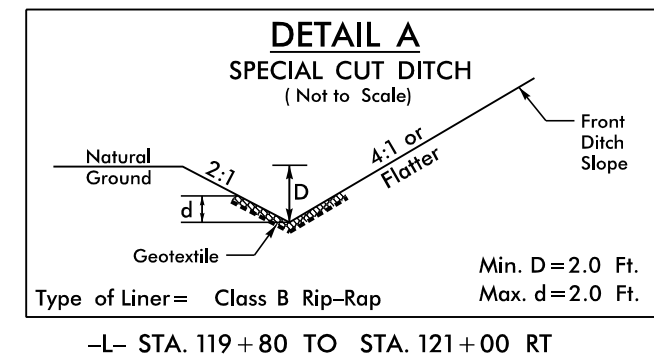
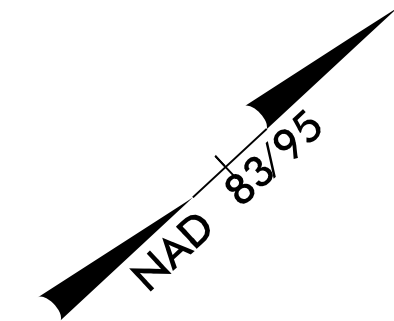
8.17.09

PROJECT REFERENCE NO.	SHEET NO.
R-5742	EC-13/CONST.-11
RW SHEET NO.	
ROADWAY DESIGN ENGINEER	HYDRAULICS ENGINEER

INSTALL PIPE(S) IN JURISDICTIONAL AREAS ACCORDING TO NCDOT BEST MANAGEMENT PRACTICES FOR CONSTRUCTION AND MAINTENANCE ACTIVITIES MANUAL.

CLEARING AND GRUBBING EROSION CONTROL FOR CONSTRUCTION SHEET 11

NOTE: PLACE TEMPORARY ROCK SEDIMENT DAMS TYPE - B AND TEMPORARY ROCK SILT CHECKS TYPE - A AT DRAINAGE OUTLETS.



-L-		
PI Sta 105+57.11	PI Sta 113+29.12	PI Sta 124+82.88
$\Delta = 8' 18'' 36.2''$ (RT)	$\Delta = 37' 20'' 28.7''$ (LT)	$\Delta = 50' 33'' 06.6''$ (RT)
$D = 2' 17'' 30.6''$	$D = 6' 01'' 52.1''$	$D = 4' 51'' 20.1''$
$L = 362.59'$	$L = 619.14'$	$L = 1,041.11'$
$T = 181.62'$	$T = 321.01'$	$T = 557.18'$
$R = 2,500.00'$	$R = 950.00'$	$R = 1,180.00'$
$SE = 0.05$	$SE = 0.08$	$SE = 0.08$
$V = 50$ mph	$V = 50$ mph	$V = 50$ mph

FOR -L- PROFILE SEE SHT. 23
 FOR -DR8- & -DR9- PROFILES SEE SHT. 28
 FOR WALLS 1&2 PROFILES SEE SHT. W-2
 FOR WALLS 6&7 PROFILES SEE SHT. W-3
 NOTE: ALL DRIVEWAY WIDTHS ARE 16' UNLESS OTHERWISE NOTED.
 ALL DRIVEWAY RADII ARE 10' UNLESS OTHERWISE NOTED.

FOR LIMITS OF TEMPORARY SHORING, SEE TRAFFIC CONTROL PLANS

PLANS PREPARED BY :

RUMMEL, KLEPPER & KAHL, LLP
 900 RIDGEFIELD DRIVE SUITE 350
 RALEIGH, NORTH CAROLINA 27609-3960
 NC LICENSE NO. F-0112 • (919) 878-9560

R:\Hydro\Projects\EC-13\Const-11\EC-13-Const-11.dgn