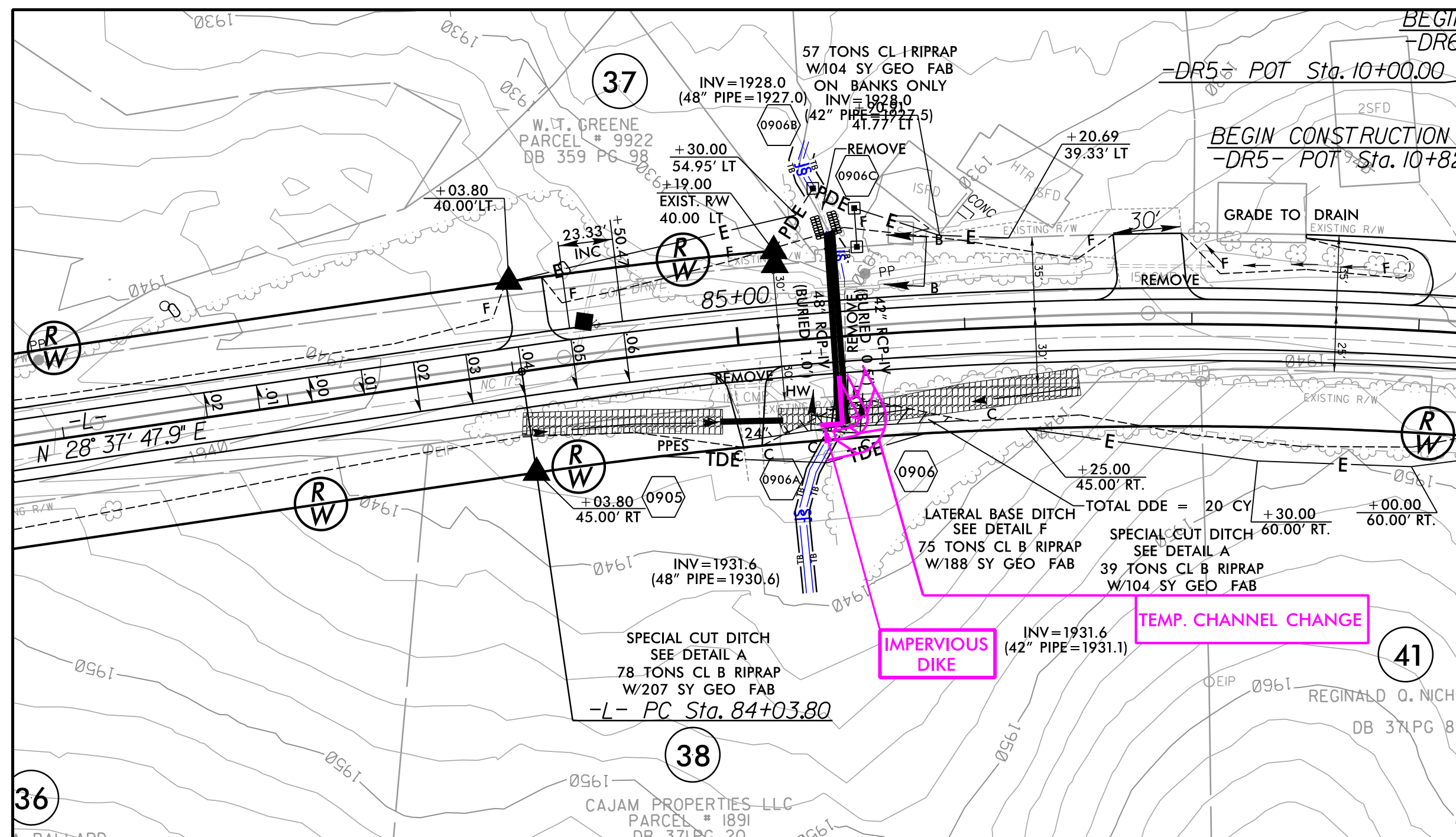
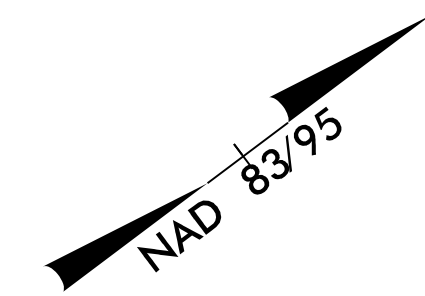
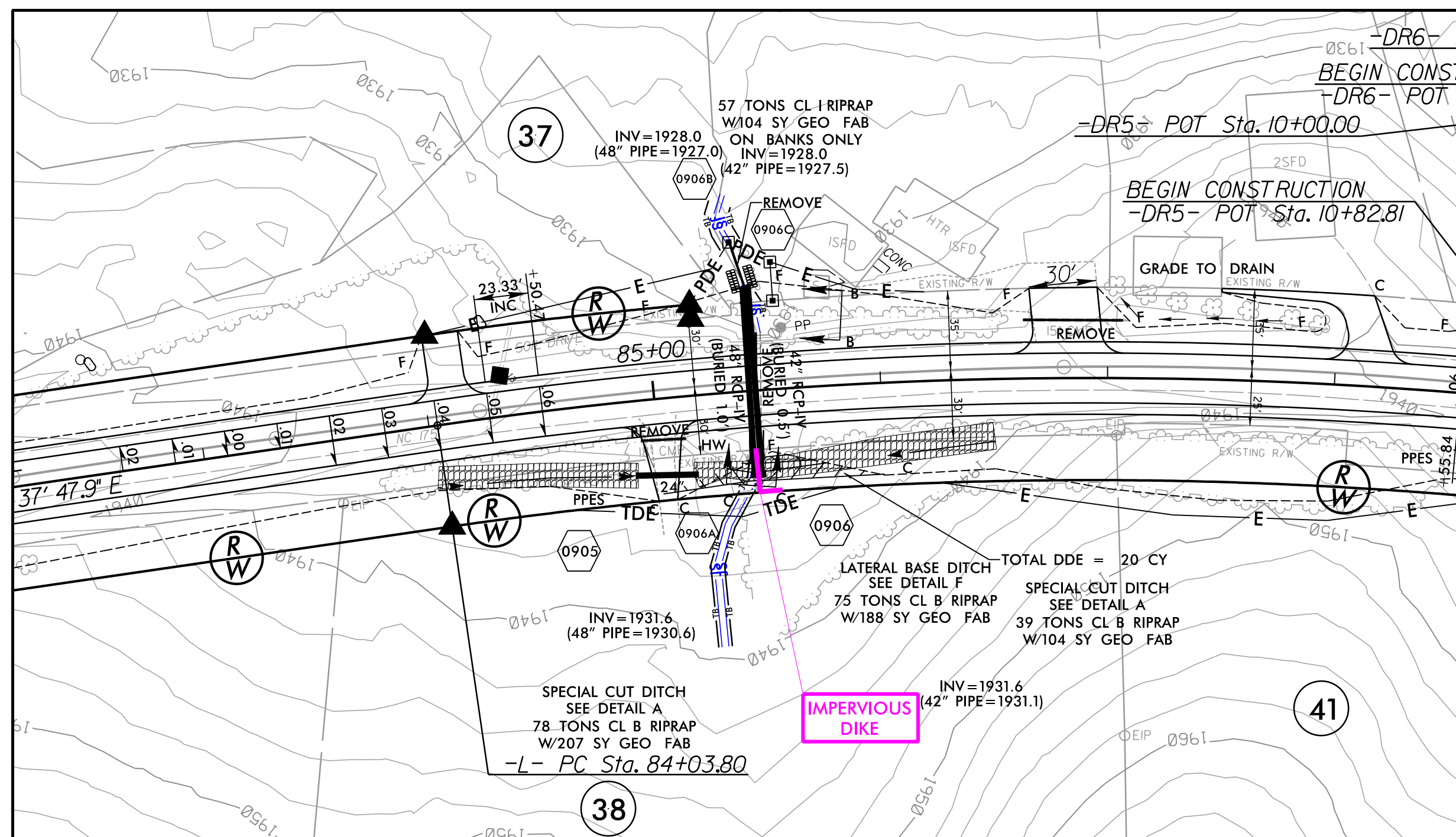
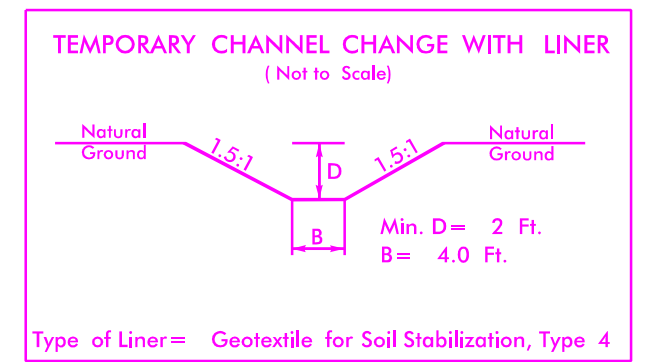


PROJECT REFERENCE NO. R-5742	SHEET NO. EC-IIA/CONST-09
RW SHEET NO.	
ROADWAY DESIGN ENGINEER	HYDRAULICS ENGINEER



CULVERT CONSTRUCTION SEQUENCE STA. 85+43 -L- PHASE I

1. UTILIZE SPECIAL STILLING BASIN(S) AS NECESSARY
2. INSTALL TEMPORARY CHANNEL CHANGE WITH LINER AS SHOWN
3. INSTALL IMPERVIOUS DIKE AS SHOWN
4. INSTALL THE SOUTHERN MOST PERMANENT 48" RCP-IV DRAINAGE PIPE
5. REMOVE IMPERVIOUS DIKE AND FILL-IN TEMPORARY CHANNEL CHANGE



CULVERT CONSTRUCTION SEQUENCE STA. 85+43 -L- PHASE II

1. INSTALL IMPERVIOUS DIKE AS SHOWN DIRECTING FLOW INTO THE SOUTHERN MOST 48" RCP
2. INSTALL THE NORTHERN MOST PERMANENT 48" RCP-IV DRAINAGE PIPE
3. REMOVE IMPERVIOUS DIKE
4. DIRECT FLOW INTO BOTH PIPES
5. COMPLETE ROADWAY

PLANS PREPARED BY :



RUMMEL, KLEPPER & KAHL, LLP
 900 RIDGEFIELD DRIVE SUITE 350
 RALEIGH, NORTH CAROLINA 27609-3960
 NC LICENSE NO. F-0112 • (919) 878-9560

8/17/99

R:\Projects\2018\Public\CADD\PSH\ER-oson_Contr\1R-5742_EC_psh09A.dgn