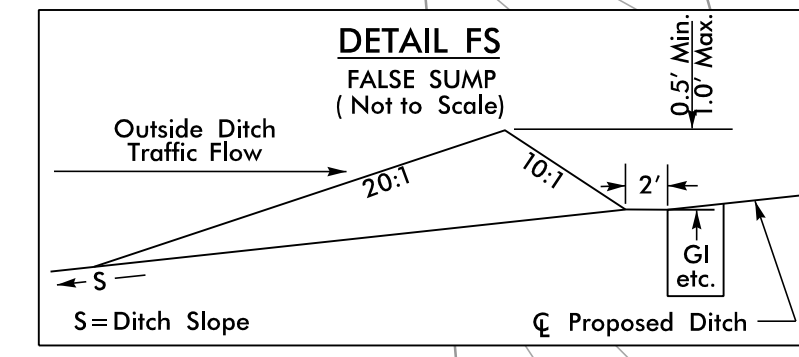
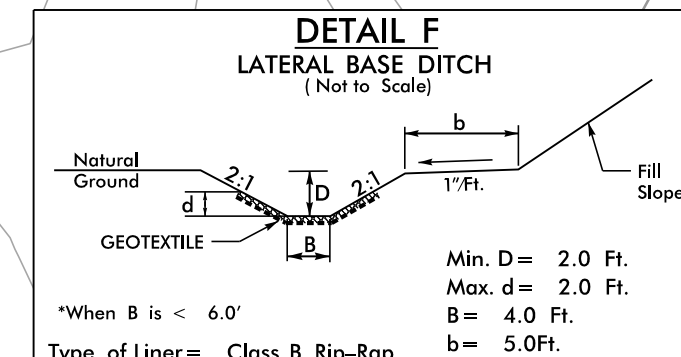
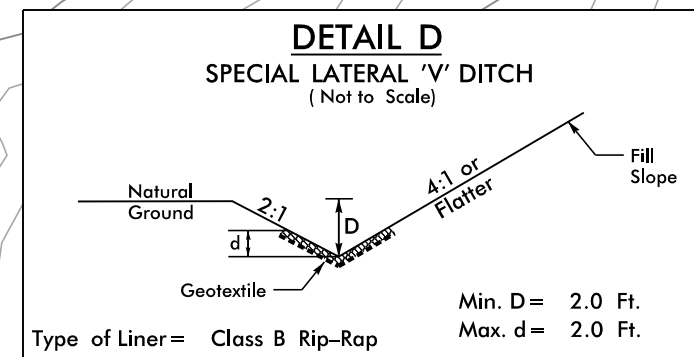
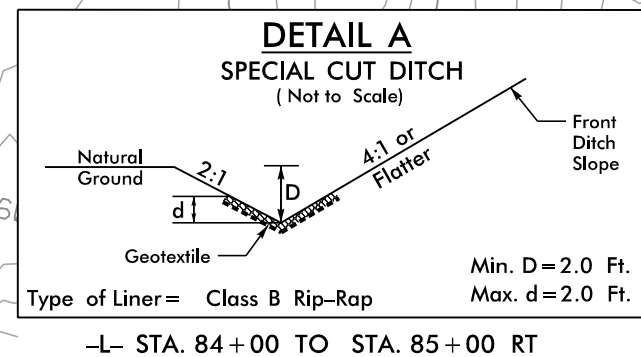


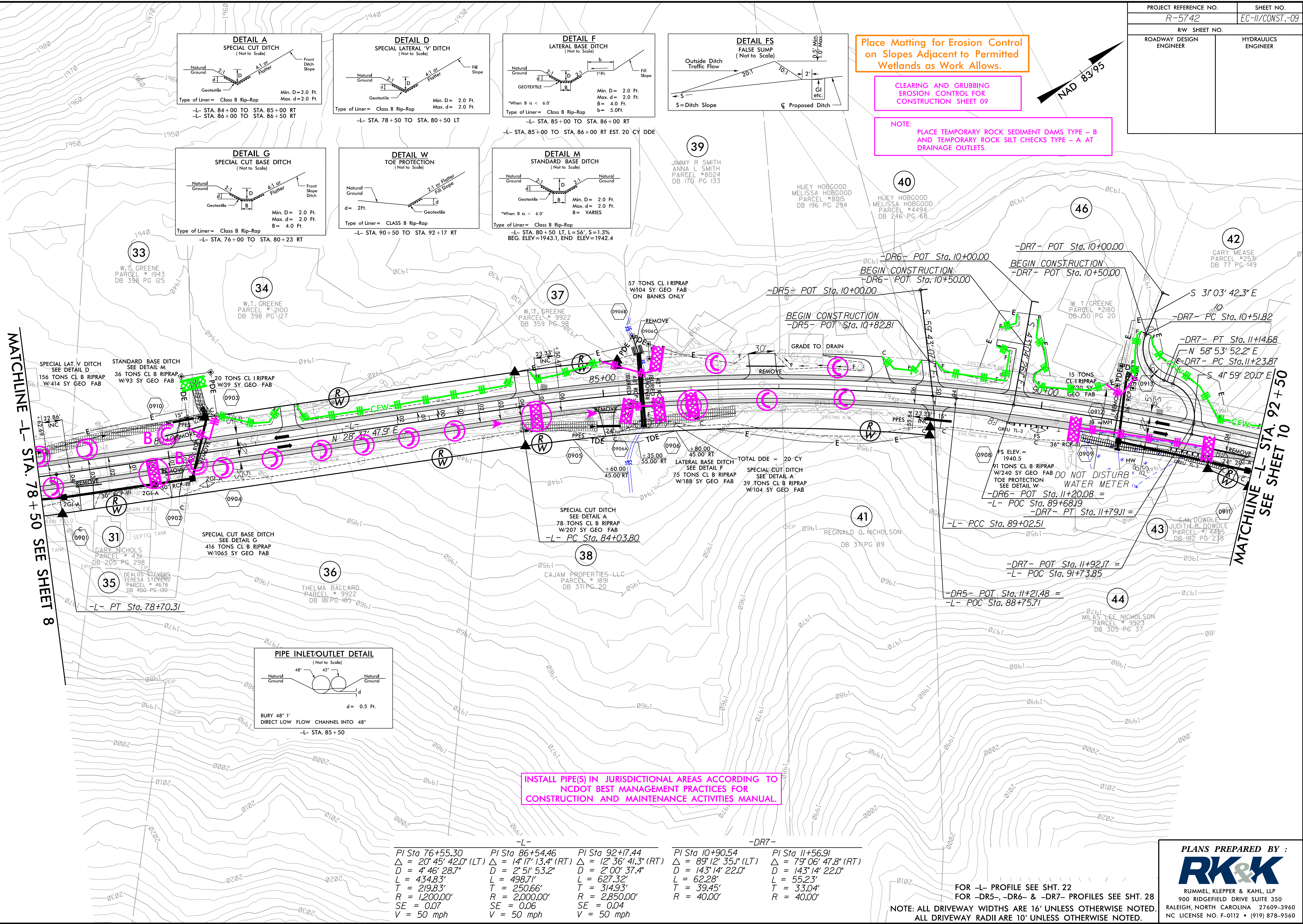
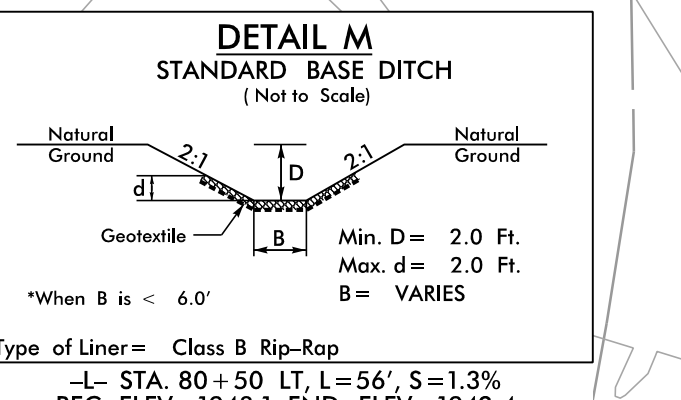
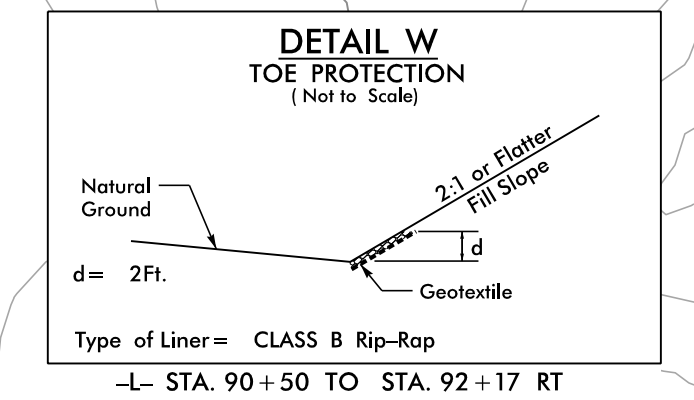
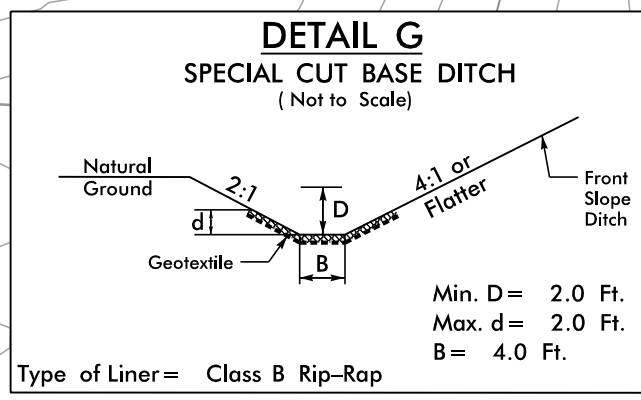
PROJECT REFERENCE NO.	SHEET NO.
R-5742	EC-11/CONST.-09
RW SHEET NO.	
ROADWAY DESIGN ENGINEER	HYDRAULICS ENGINEER



Place Matting for Erosion Control on Slopes Adjacent to Permitted Wetlands as Work Allows.

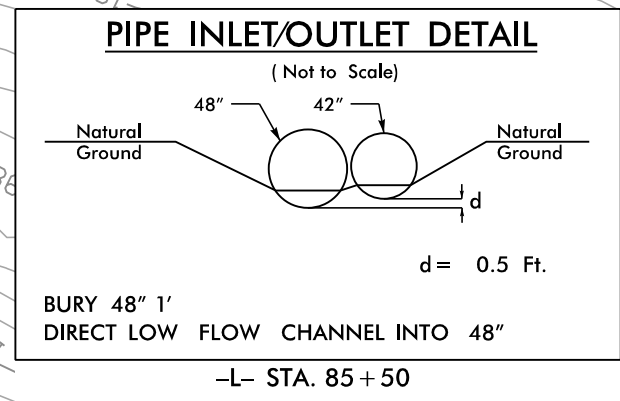
CLEARING AND GRUBBING EROSION CONTROL FOR CONSTRUCTION SHEET 09

NOTE: PLACE TEMPORARY ROCK SEDIMENT DAMS TYPE - B AND TEMPORARY ROCK SILT CHECKS TYPE - A AT DRAINAGE OUTLETS.



MATCHLINE -L- STA. 78+50 SEE SHEET 8

MATCHLINE -L- STA. 92+50 SEE SHEET 10



INSTALL PIPE(S) IN JURISDICTIONAL AREAS ACCORDING TO NCDOT BEST MANAGEMENT PRACTICES FOR CONSTRUCTION AND MAINTENANCE ACTIVITIES MANUAL.

PI Sta 76+55.30 Δ = 20' 45" 42.0" (LT) D = 4' 46" 28.7" L = 434.83' T = 219.83' R = 1,200.00' SE = 0.07 V = 50 mph	PI Sta 86+54.46 Δ = 14' 17" 13.4" (RT) D = 2' 51" 53.2" L = 498.71' T = 250.66' R = 2,850.00' SE = 0.06 V = 50 mph	PI Sta 92+7.44 Δ = 12' 36" 41.3" (RT) D = 2' 00" 37.4" L = 627.32' T = 314.93' R = 2,850.00' SE = 0.04 V = 50 mph	PI Sta 10+90.54 Δ = 89' 12" 35.1" (LT) D = 143' 14" 22.0" L = 62.28' T = 39.45' R = 40.00'	PI Sta 11+56.91 Δ = 79' 06" 47.8" (RT) D = 143' 14" 22.0" L = 55.23' T = 33.04' R = 40.00'
---	---	--	---	---

FOR -L- PROFILE SEE SHT. 22
FOR -DR5-, -DR6- & -DR7- PROFILES SEE SHT. 28
NOTE: ALL DRIVEWAY WIDTHS ARE 16' UNLESS OTHERWISE NOTED.
ALL DRIVEWAY RADII ARE 10' UNLESS OTHERWISE NOTED.

PLANS PREPARED BY :

RUMMEL, KLEPPER & KAHL, LLP
900 RIDGEFIELD DRIVE SUITE 350
RALEIGH, NORTH CAROLINA 27609-3960
NC LICENSE NO. F-0112 • (919) 878-9560

8.17.2018 R:\Hydro\lics\CADD\PSH\Erosion_Control\NR-5742_EC_psh09.dgn