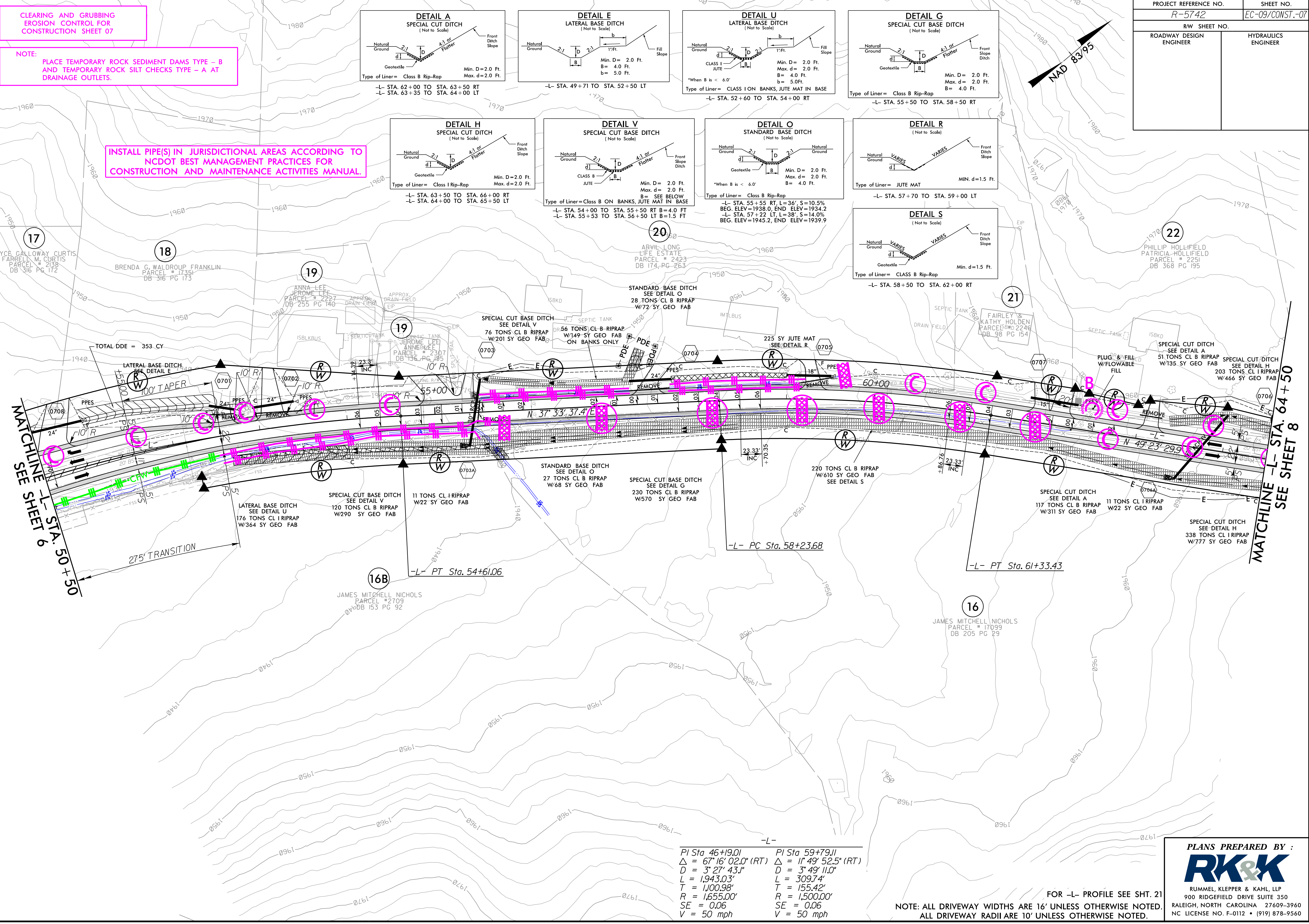
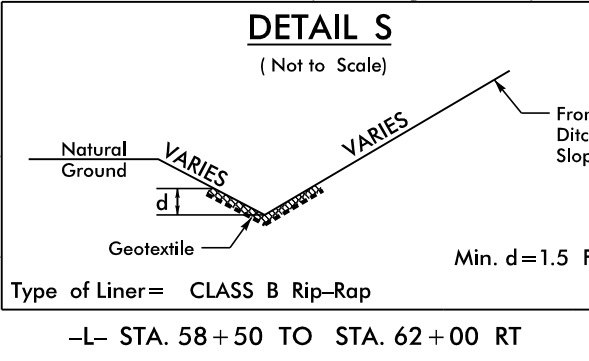
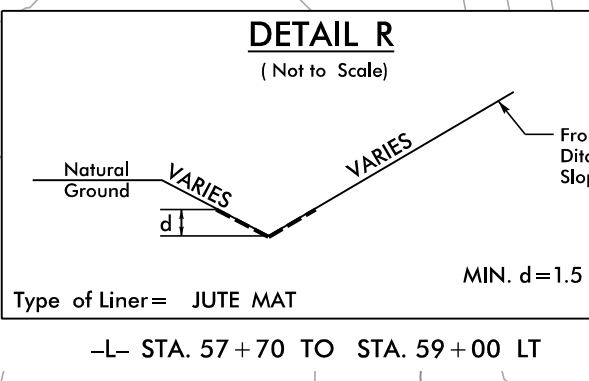
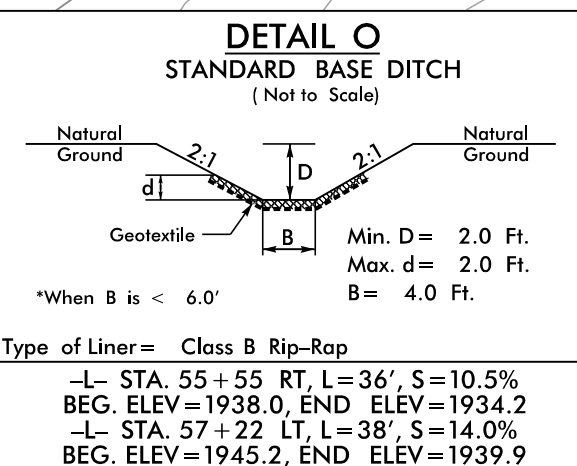
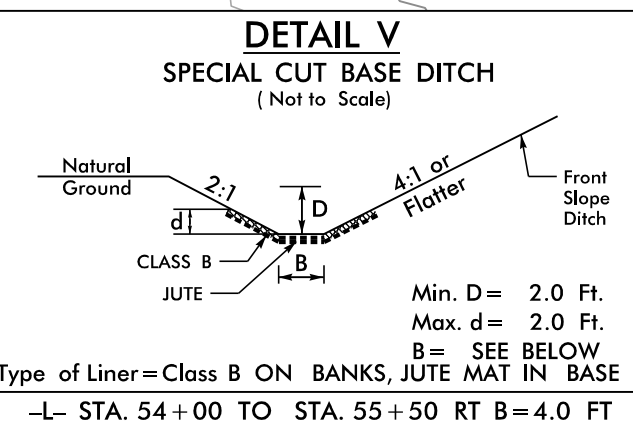
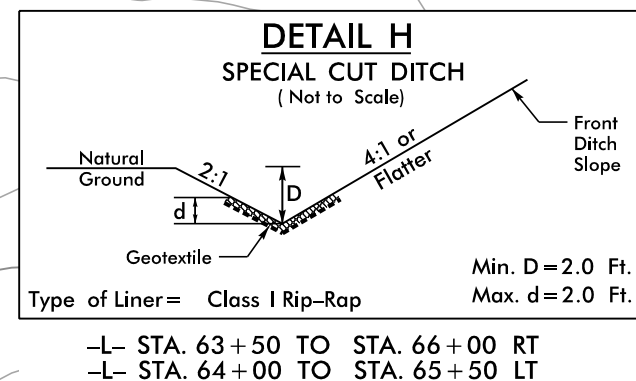
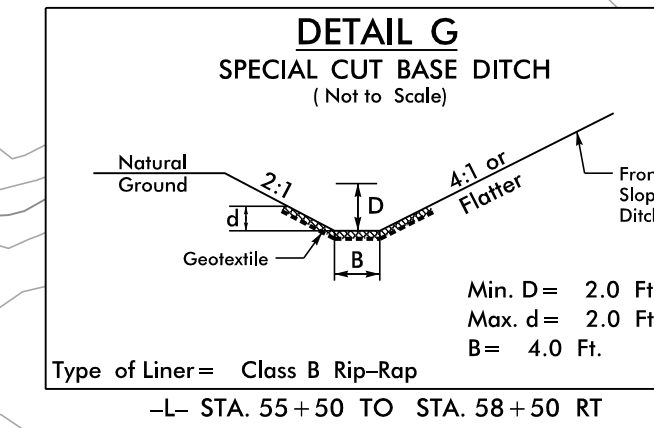
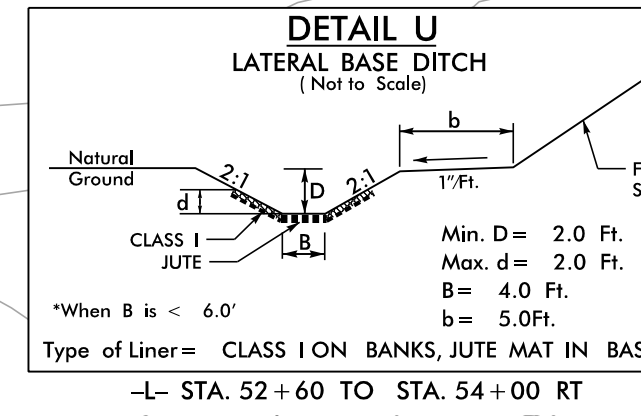
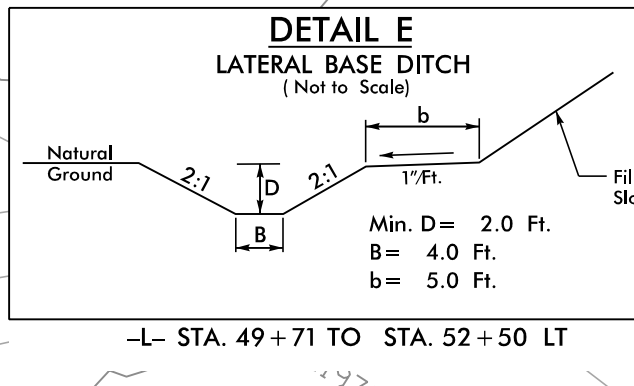
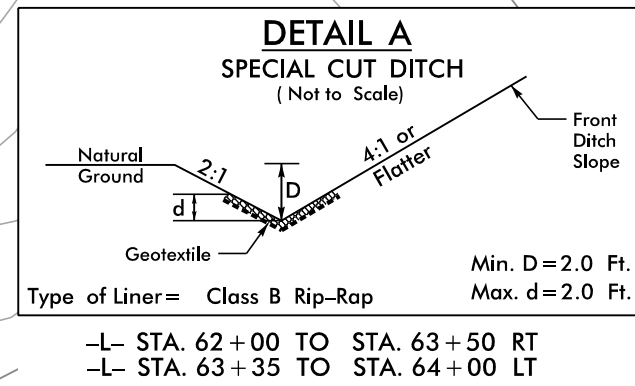


CLEARING AND GRUBBING
EROSION CONTROL FOR
CONSTRUCTION SHEET 07

NOTE:
PLACE TEMPORARY ROCK SEDIMENT DAMS TYPE - B
AND TEMPORARY ROCK SILT CHECKS TYPE - A AT
DRAINAGE OUTLETS.

INSTALL PIPE(S) IN JURISDICTIONAL AREAS ACCORDING TO
NCDOT BEST MANAGEMENT PRACTICES FOR
CONSTRUCTION AND MAINTENANCE ACTIVITIES MANUAL.

PROJECT REFERENCE NO. R-5742	SHEET NO. EC-09/CONST.-07
RW SHEET NO.	
ROADWAY DESIGN ENGINEER	HYDRAULICS ENGINEER



PI Sta 46+19.01 Δ = 67°16'02.0" (RT) D = 3°27'43.1" L = 1,943.03' T = 1,100.98' R = 1,655.00' SE = 0.06 V = 50 mph	PI Sta 59+79.11 Δ = 11°49'52.5" (RT) D = 3°49'11.0" L = 309.74' T = 155.42' R = 1,500.00' SE = 0.06 V = 50 mph
---	---

NOTE: ALL DRIVEWAY WIDTHS ARE 16' UNLESS OTHERWISE NOTED.
ALL DRIVEWAY RADII ARE 10' UNLESS OTHERWISE NOTED.

PLANS PREPARED BY :

RUMMEL, KLEPPER & KAHL, LLP
900 RIDGEFIELD DRIVE SUITE 350
RALEIGH, NORTH CAROLINA 27609-3960
NC LICENSE NO. F-0112 • (919) 878-9560

R:\Hydro\plans\CADD\PSH\Erosion_Control\NR-5742_EC_psh07.dgn