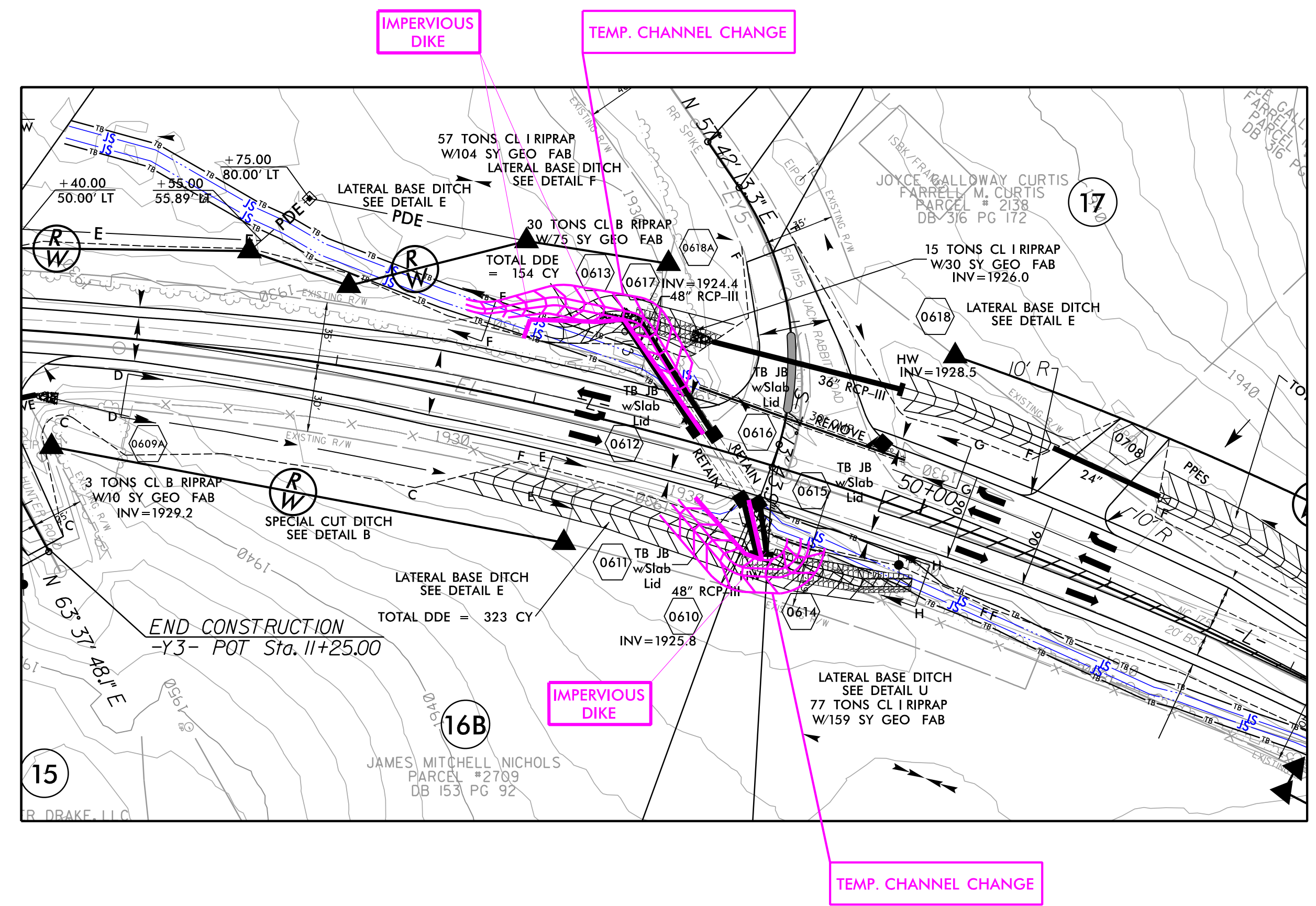
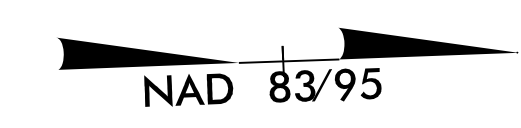
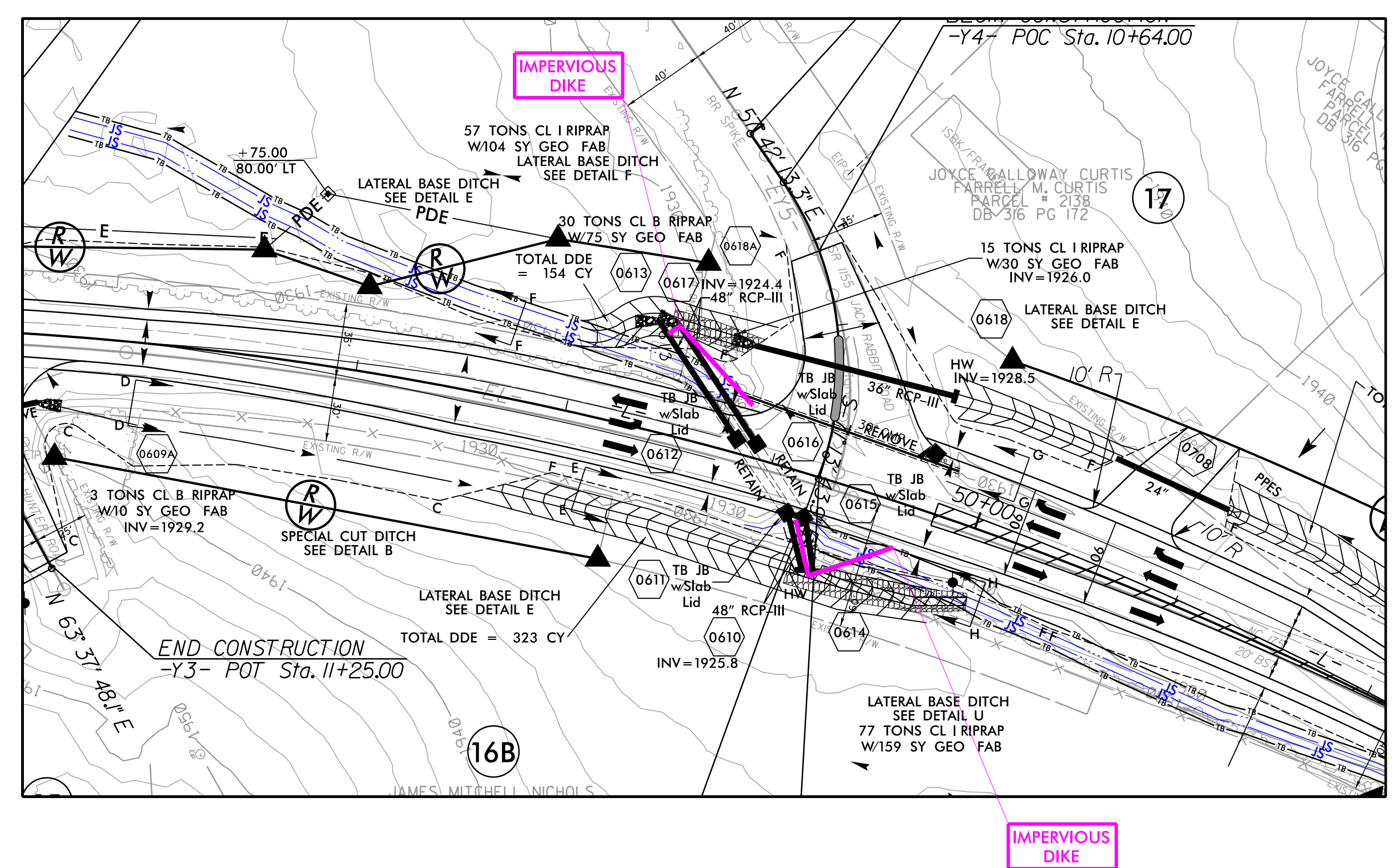
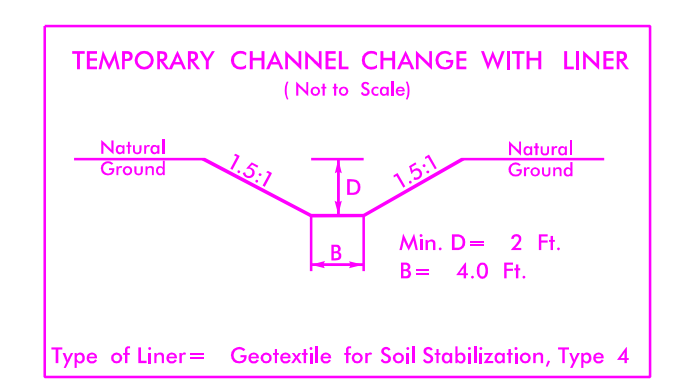


PROJECT REFERENCE NO. R-5742	SHEET NO. EC-08B/CONST.-06
RW SHEET NO.	
ROADWAY DESIGN ENGINEER	HYDRAULICS ENGINEER



CULVERT CONSTRUCTION SEQUENCE STA. 48+93 -I- PHASE I

1. UTILIZE SPECIAL STILLING BASIN(S) AS NECESSARY
2. INSTALL TEMPORARY CHANNEL CHANGES AS SHOWN
3. INSTALL IMPERVIOUS DIKES AS SHOWN
4. INSTALL PERMANENT DRAINAGE STRUCTURES 0618, 0610, 0611, 0612, AND 0613
5. REMOVE IMPERVIOUS DIKES
6. INSTALL PERMANENT DRAINAGE DITCHES DIRECTING FLOW TO 0618 AND 0610
7. REMOVE TEMPORARY CHANNEL CHANGES



CULVERT CONSTRUCTION SEQUENCE STA. 48+93 -I- PHASE II

1. INSTALL IMPERVIOUS DIKES AS SHOWN
2. INSTALL STRUCTURES 0614, 0615, 0616, AND 0617
3. REMOVE IMPERVIOUS DIKES
4. CONSTRUCT LATERAL BASE DITCH TO FLOW INTO 0614
5. COMPLETE ROADWAY

PLANS PREPARED BY :
RK&K
 RUMMEL, KLEPPER & KAHL, LLP
 900 RIDGEFIELD DRIVE SUITE 350
 RALEIGH, NORTH CAROLINA 27609-3960
 NC LICENSE NO. F-0112 • (919) 878-9560

8/17/99

R:\21\2018\Public\CADD\PSH\E-roston_Contr01\R-5742_EC_psh06B.dgn