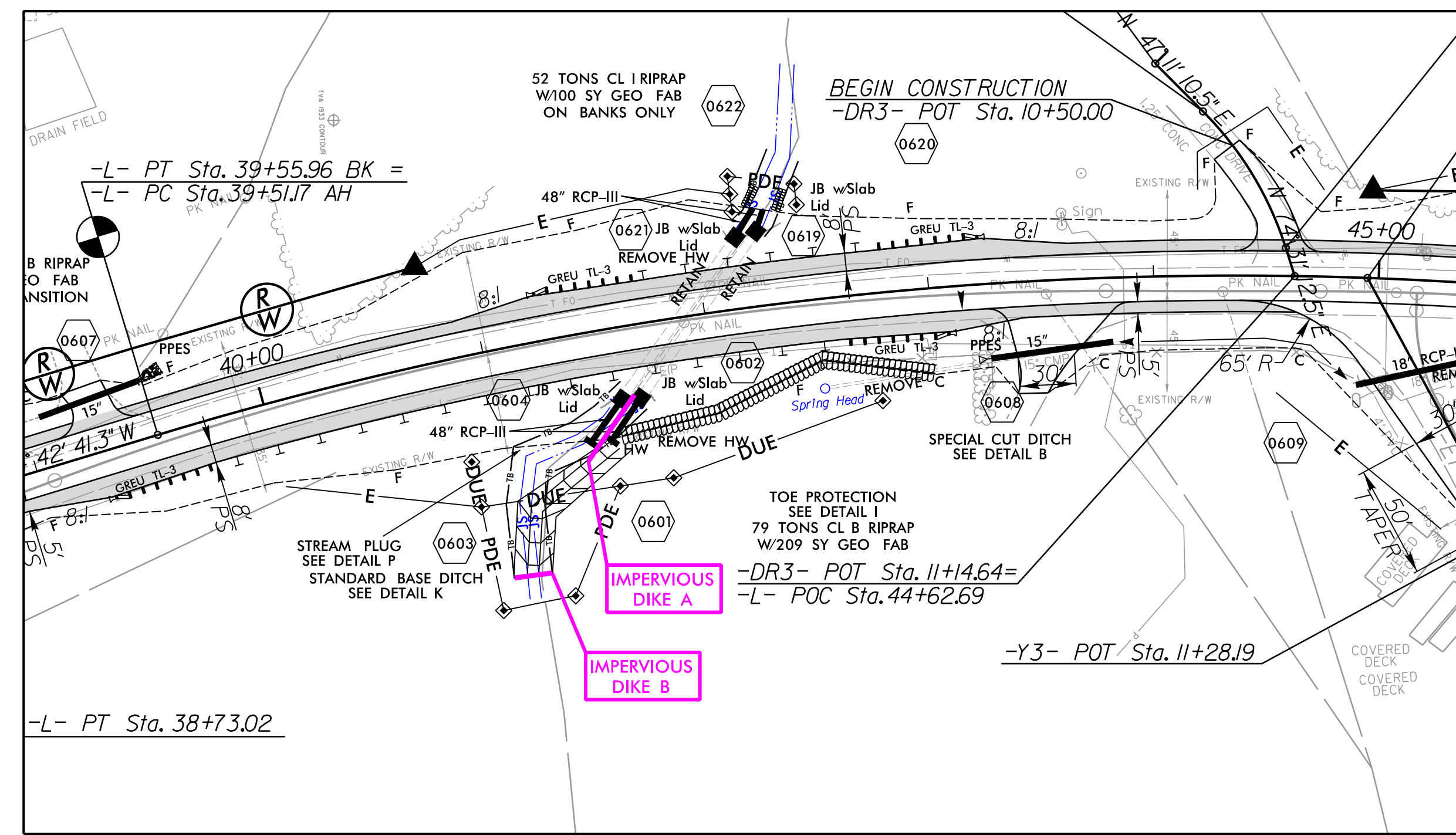
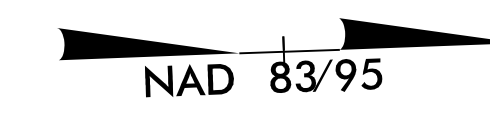
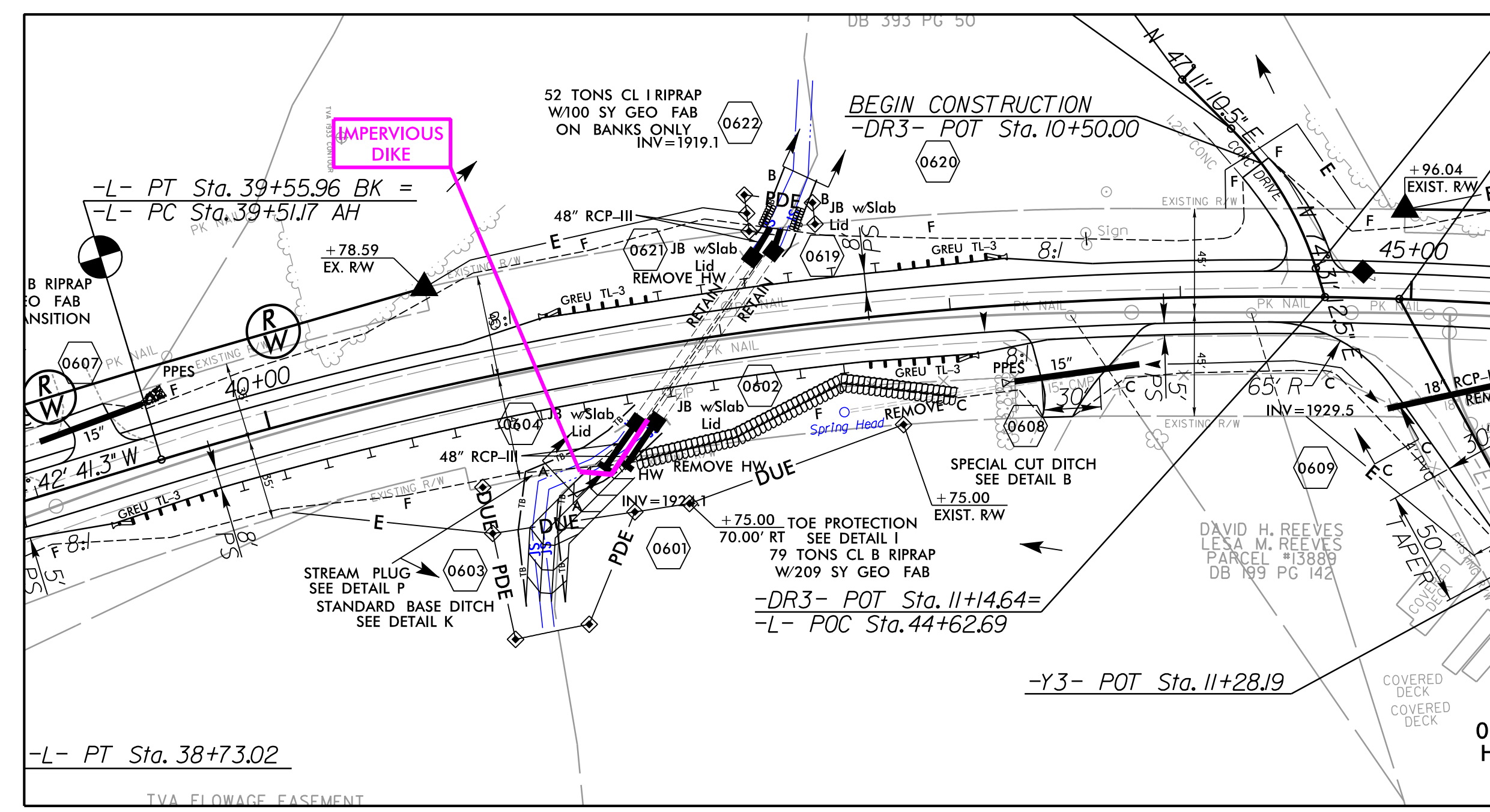


PROJECT REFERENCE NO.	SHEET NO.
R-5742	EC-08A/CONST.-06
RW SHEET NO.	
ROADWAY DESIGN ENGINEER	HYDRAULICS ENGINEER



CULVERT CONSTRUCTION SEQUENCE STA. 41+92 -L- PHASE I

1. UTILIZE SPECIAL STILLING BASIN(S) AS NECESSARY
2. INSTALL IMPERVIOUS DIKE A AS SHOWN
3. DIVERT FLOW TO THE EXISTING SOUTHERN 48" RCP
4. INSTALL STRUCTURES 601, 602, 619, AND 620
5. REMOVE IMPERVIOUS DIKE A
6. INSTALL IMPERVIOUS DIKE B UPSTREAM OF TIE IN AS SHOWN
7. UTILIZING PUMP AROUND OPERATIONS, CONSTRUCT STANDARD BASE DITCH, AS PER DETAIL K.
8. REMOVE IMPERVIOUS DIKE B AND PUMP AROUND, DIVERT FLOW TO 601



CULVERT CONSTRUCTION SEQUENCE STA. 41+92 -L- PHASE II

1. INSTALL IMPERVIOUS DIKE AS SHOWN
2. INSTALL STRUCTURES 603, 604, 621, AND 622
3. REMOVE IMPERVIOUS DIKE AND PUMP AROUND
4. CONSTRUCT STANDARD BASE DITCH TO FLOW INTO 601 AND 603
5. COMPLETE ROADWAY

PLANS PREPARED BY :

RUMMEL, KLEPPER & KAHL, LLP
 900 RIDGEFIELD DRIVE SUITE 350
 RALEIGH, NORTH CAROLINA 27609-3960
 NC LICENSE NO. F-0112 • (919) 878-9560

B:\17\99
 R:\Hydro\cadd\PSH\Erosion_Control\N-5742_EC_psh\06A.dgn
 2/2/2018 10:42:00 AM