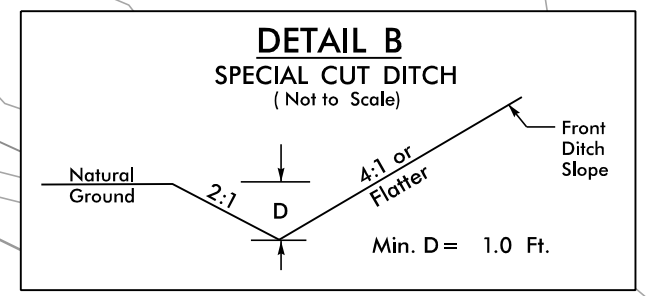
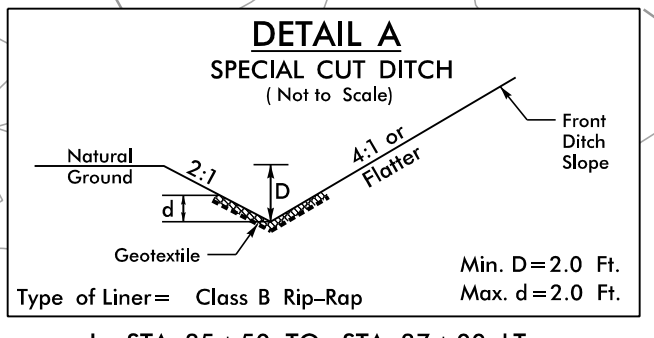


PROJECT REFERENCE NO.	SHEET NO.
R-5742	EC-08/CONST.-06
RW SHEET NO.	
ROADWAY DESIGN ENGINEER	HYDRAULICS ENGINEER

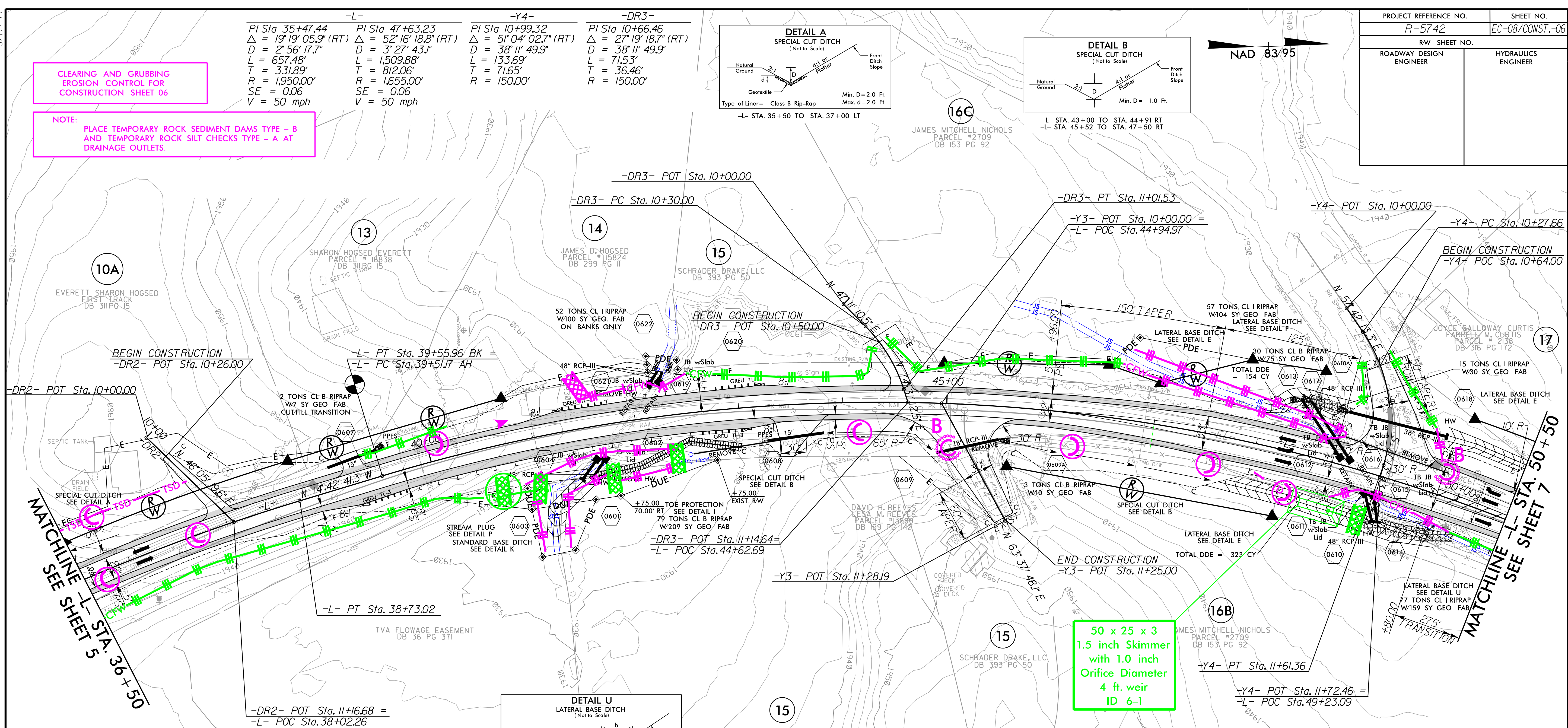
CLEARING AND GRUBBING
EROSION CONTROL FOR
CONSTRUCTION SHEET 06

NOTE: PLACE TEMPORARY ROCK SEDIMENT DAMS TYPE - B AND TEMPORARY ROCK SILT CHECKS TYPE - A AT DRAINAGE OUTLETS.

-L-	-Y4-	-DR3-
PI Sta 35+47.44 Δ = 19'19" 05.9" (RT) D = 2'56" 17.7" L = 657.48' T = 331.89' R = 1,950.00' SE = 0.06 V = 50 mph	PI Sta 47+63.23 Δ = 52'16" 18.8" (RT) D = 3'27" 43.1" L = 1,509.88' T = 812.06' R = 1,655.00' SE = 0.06 V = 50 mph	PI Sta 10+99.32 Δ = 51'04" 02.7" (RT) D = 38'11" 49.9" L = 133.69' T = 71.65' R = 150.00'

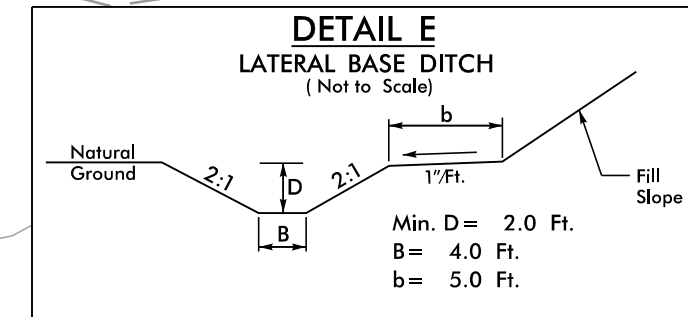


NAD 83/95

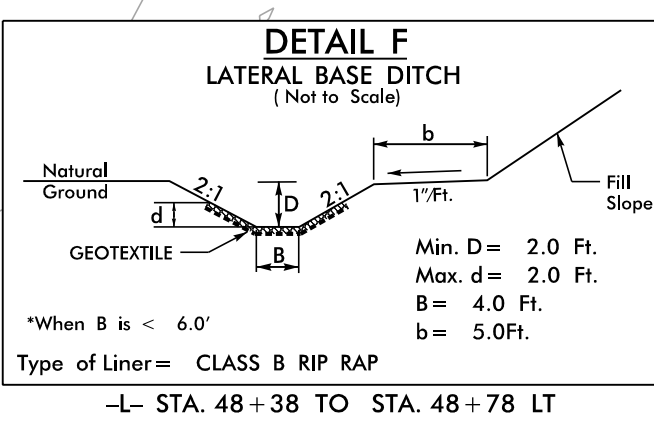


MATCHLINE -L- STA. 36+50
SEE SHEET 5

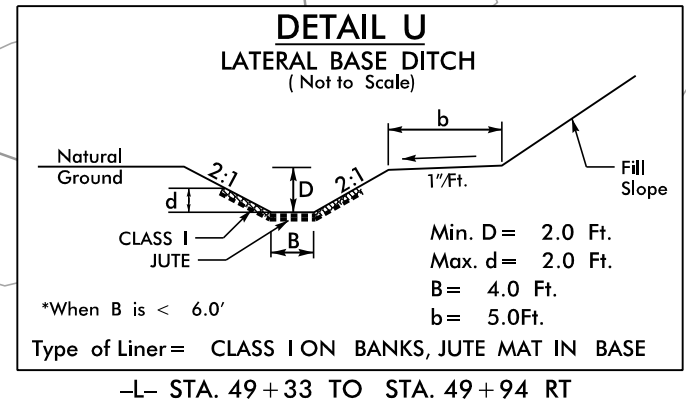
MATCHLINE -L- STA. 50+50
SEE SHEET 7



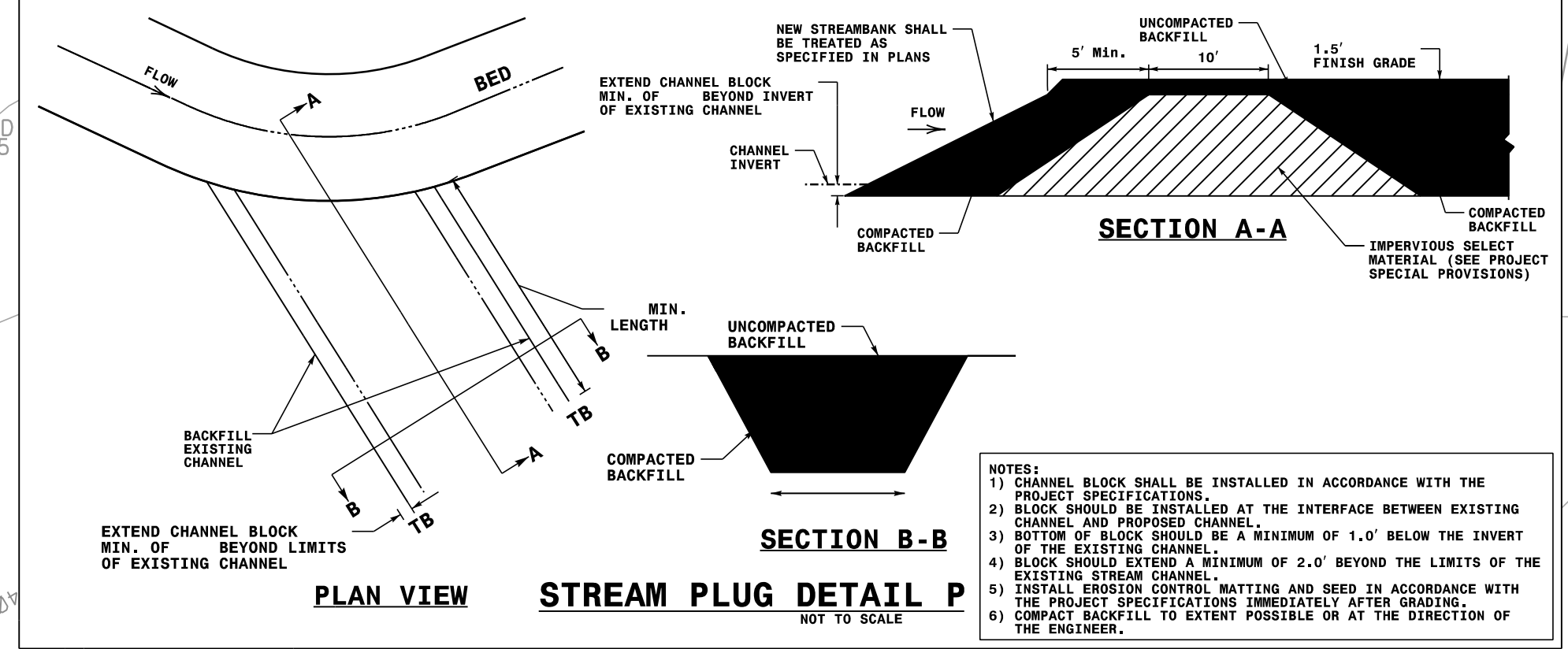
-L- STA. 47+98 TO STA. 48+38 LT
-L- STA. 47+50 TO STA. 49+33 RT
-L- STA. 49+71 TO STA. 52+50 LT
-L- STA. 47+98 TO STA. 48+38 LT EST. 154 CY DDE
-L- STA. 47+50 TO STA. 49+33 RT EST. 323 CY DDE
-L- STA. 49+71 TO STA. 52+50 LT EST. 353 CY DDE



-L- STA. 48+38 TO STA. 48+78 LT

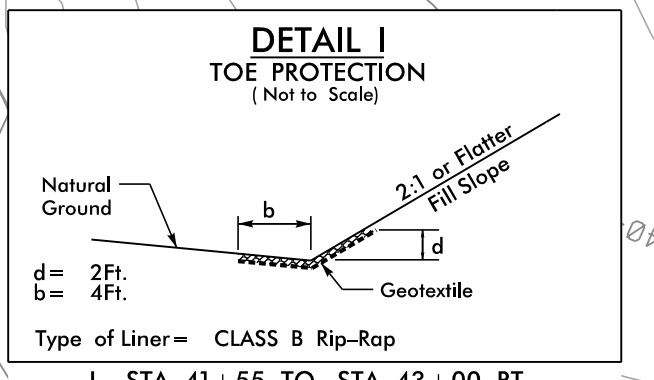


-L- STA. 49+33 TO STA. 49+94 RT

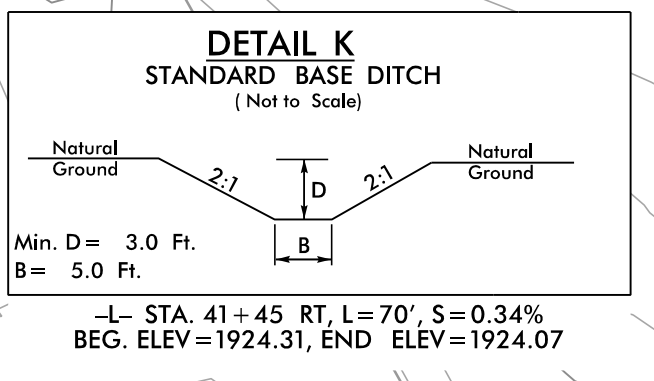


NOTES:
1) CHANNEL BLOCK SHALL BE INSTALLED IN ACCORDANCE WITH THE PROJECT SPECIFICATIONS.
2) BLOCK SHOULD BE INSTALLED AT THE INTERFACE BETWEEN EXISTING CHANNEL AND PROPOSED CHANNEL.
3) BOTTOM OF BLOCK SHOULD BE A MINIMUM OF 1.0' BELOW THE INVERT OF THE EXISTING CHANNEL.
4) BLOCK SHOULD EXTEND A MINIMUM OF 2.0' BEYOND THE LIMITS OF THE EXISTING CHANNEL.
5) INSTALL EROSION CONTROL MATTING AND SEED IN ACCORDANCE WITH THE PROJECT SPECIFICATIONS IMMEDIATELY AFTER GRADING.
6) COMPACT BACKFILL TO EXTENT POSSIBLE OR AT THE DIRECTION OF THE ENGINEER.

50 x 25 x 3
1.5 inch Skimmer
with 1.0 inch
Orifice Diameter
4 ft. weir
ID 6-1



-L- STA. 41+55 TO STA. 43+00 RT



-L- STA. 41+45 RT, L = 70', S = 0.34%
BEG. ELEV = 1924.31, END ELEV = 1924.07

PAVEMENT REMOVAL

PLANS PREPARED BY:
RK&K
RUMMEL, KLEPPER & KAHL, LLP
900 RIDGEFIELD DRIVE SUITE 350
RALEIGH, NORTH CAROLINA 27609-3960
NC LICENSE NO. F-0112 • (919) 878-9560

FOR -L- PROFILE SEE SHTS. 20 & 21
FOR -Y3- & -Y4- PROFILES SEE SHT. 30
FOR -DR2- & -DR3- PROFILES SEE SHT. 28
FOR -DET_1- PLANPROFILE SEE SHT. 2B-1
NOTE: ALL DRIVEWAY WIDTHS ARE 16' UNLESS OTHERWISE NOTED.
ALL DRIVEWAY RADII ARE 10' UNLESS OTHERWISE NOTED.

8/17/99
R:\Projects\1000\1000-06\1000-06.dgn
12/21/2018
R:\Projects\1000\1000-06\1000-06.dgn