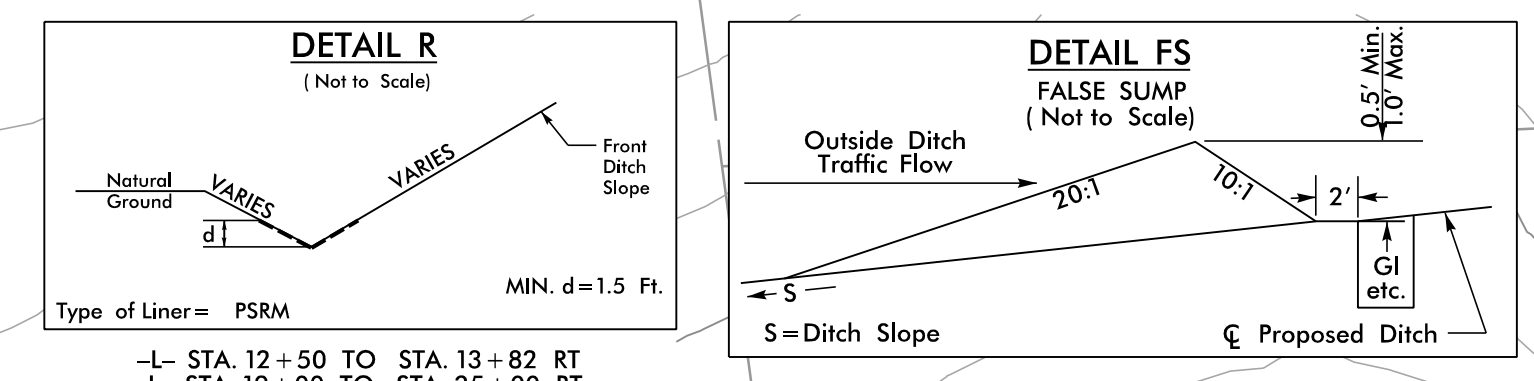
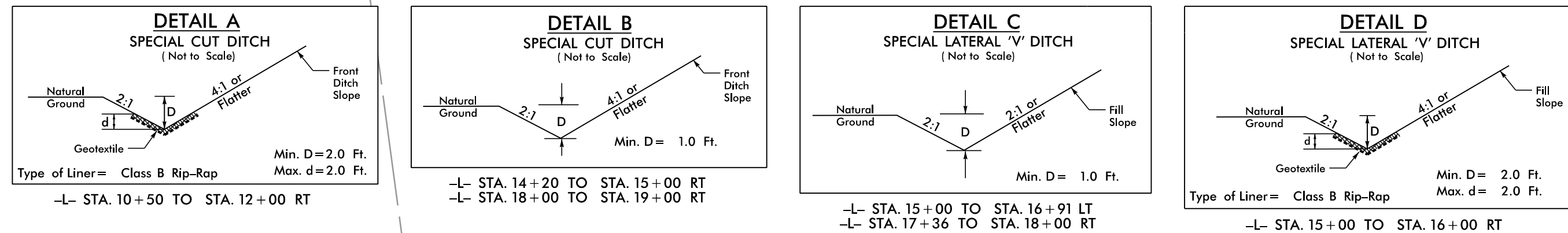


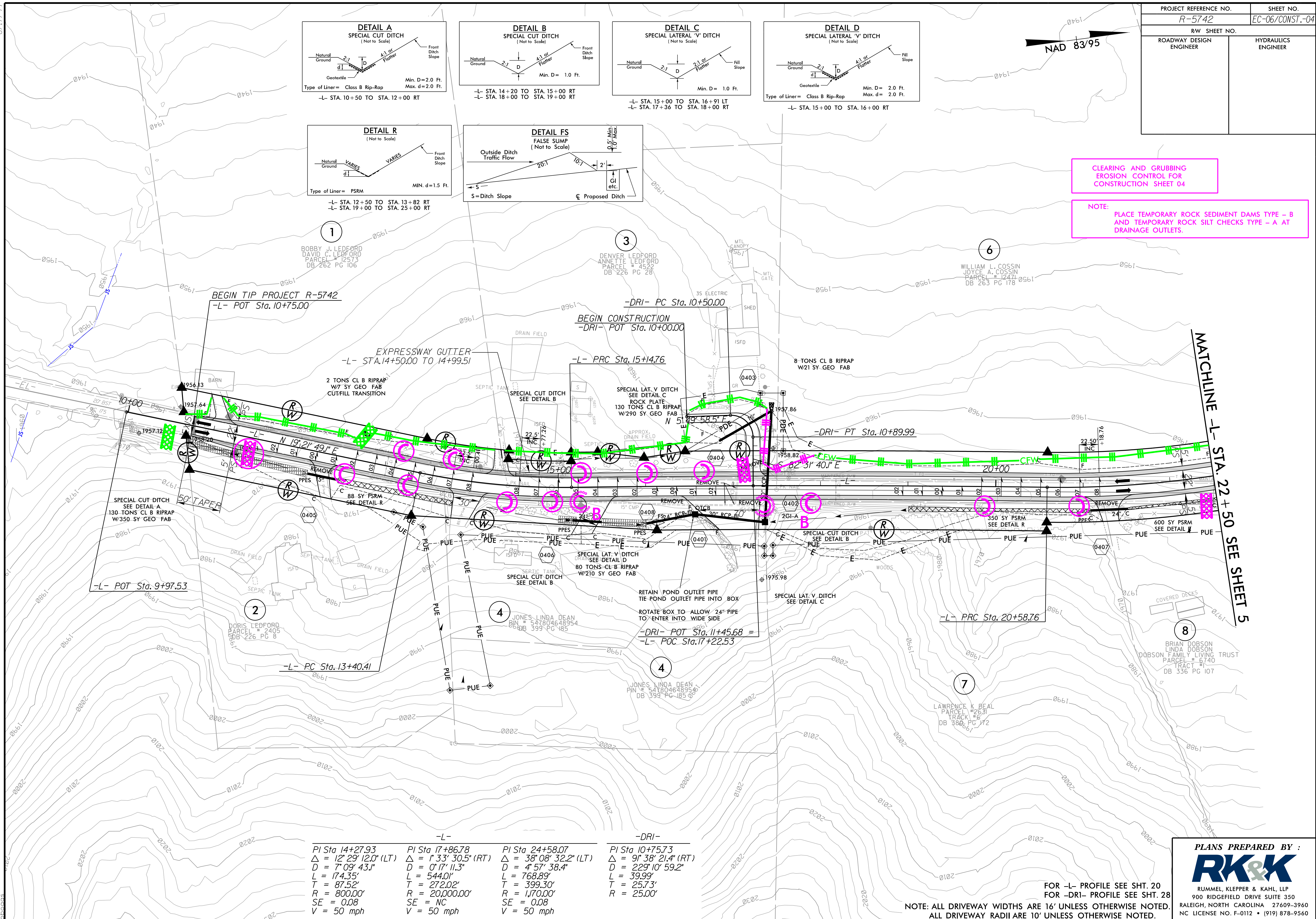
PROJECT REFERENCE NO. R-5742	SHEET NO. EC-06/CONST.-04
RW SHEET NO.	
ROADWAY DESIGN ENGINEER	HYDRAULICS ENGINEER

NAD 83/95



CLEARING AND GRUBBING EROSION CONTROL FOR CONSTRUCTION SHEET 04

NOTE: PLACE TEMPORARY ROCK SEDIMENT DAMS TYPE - B AND TEMPORARY ROCK SILT CHECKS TYPE - A AT DRAINAGE OUTLETS.



PI Sta 14+27.93 Δ = 12° 29' 12.0" (LT) D = 7' 09' 43.1" L = 174.35' T = 87.52' R = 800.00' SE = 0.08 V = 50 mph	PI Sta 17+86.78 Δ = 1° 33' 30.5" (RT) D = 0' 17' 11.3" L = 544.01' T = 272.02' R = 20,000.00' SE = NC V = 50 mph	PI Sta 24+58.07 Δ = 38° 08' 32.2" (LT) D = 4' 57' 38.4" L = 768.89' T = 399.30' R = 1,170.00' SE = 0.08 V = 50 mph	PI Sta 10+75.73 Δ = 9° 38' 21.4" (RT) D = 229' 10' 59.2" L = 39.99' T = 25.73' R = 25.00'
--	---	---	--

FOR -L- PROFILE SEE SHT. 20
FOR -DRI- PROFILE SEE SHT. 28
NOTE: ALL DRIVEWAY WIDTHS ARE 16' UNLESS OTHERWISE NOTED.
ALL DRIVEWAY RADII ARE 10' UNLESS OTHERWISE NOTED.

PLANS PREPARED BY :

RUMMEL, KLEPPER & KAHL, LLP
900 RIDGEFIELD DRIVE SUITE 350
RALEIGH, NORTH CAROLINA 27609-3960
NC LICENSE NO. F-0112 • (919) 878-9560

8/17/09
R:\Hydro\Projects\CADD\PSH\Erosion_Control\NR-5742_EC_psh04.dgn