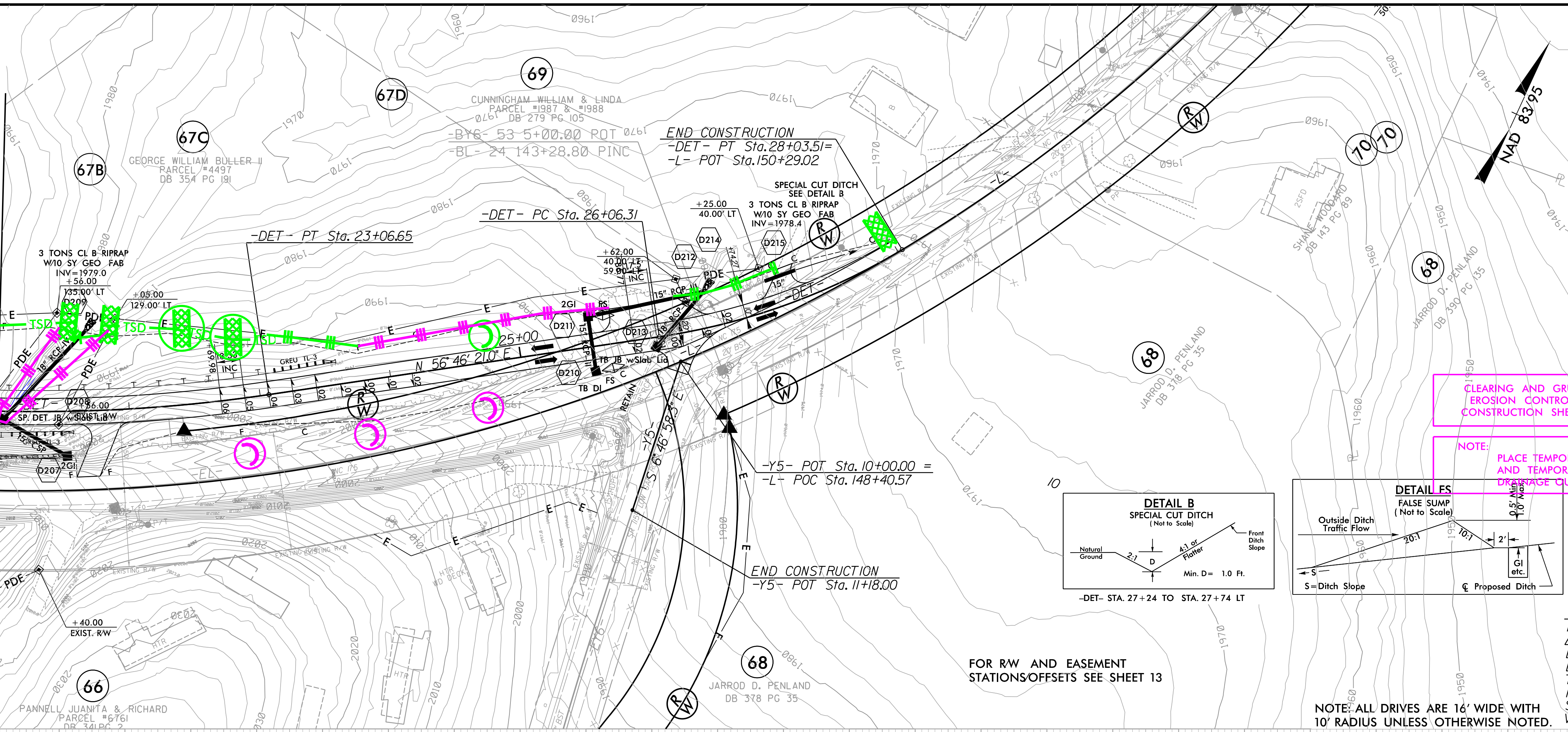


8/17/99  
R:\Hydraulics\CAD\PSH\Erosion\_Control\NR-5742\_EC\_det\_psh2B-3.dgn  
R:\Hydraulics\CAD\PSH\Erosion\_Control\NR-5742\_EC\_det\_psh2B-3.dgn

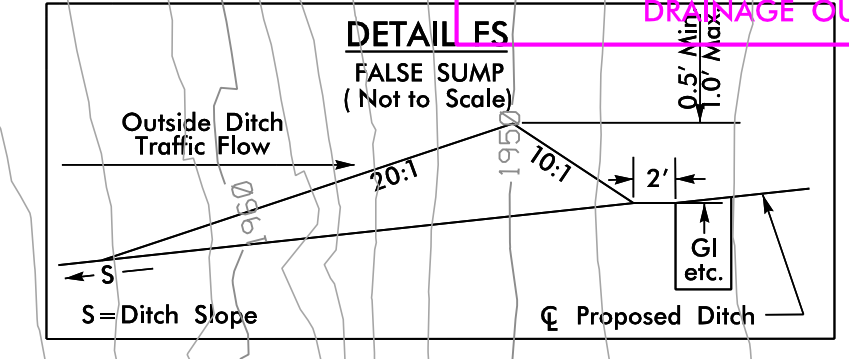
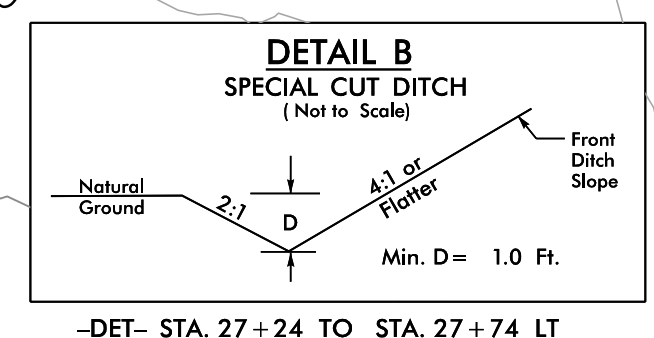
PROJECT REFERENCE NO. R-5742	SHEET NO. EC-5/CON-2B-2
RW SHEET NO.	
ROADWAY DESIGN ENGINEER	HYDRAULICS ENGINEER

MATCHLINE -DET- STA. 21+00 SEE SHEET 2B-1



CLEARING AND GRUBBING  
EROSION CONTROL FOR  
CONSTRUCTION SHEET 2B-2

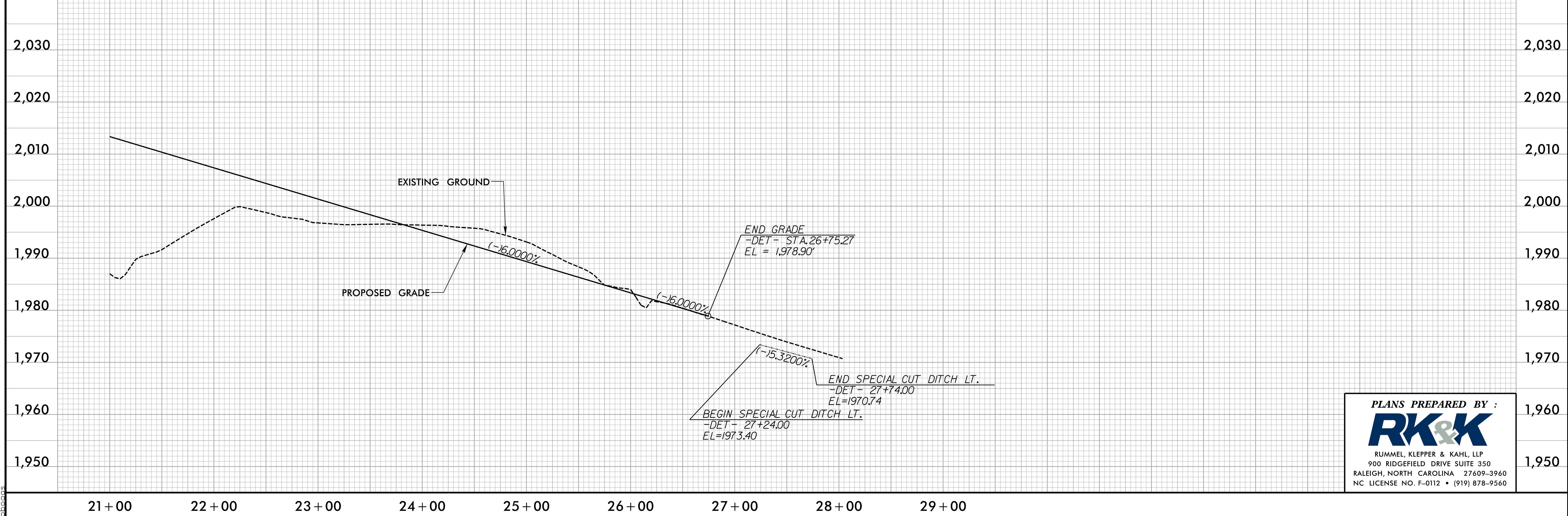
NOTE:  
PLACE TEMPORARY ROCK SEDIMENT DAMS TYPE - B  
AND TEMPORARY ROCK SILT CHECKS TYPE - A AT  
DRAINAGE OUTLETS.



-DET-	
PI Sta 21+34.35	PI Sta 27+06.21
$\Delta = 16' 34'' 11.7''$ (LT)	$\Delta = 22' 35'' 51.5''$ (LT)
$D = 4' 46'' 28.7''$	$D = 11' 27'' 33.0''$
$L = 347.04'$	$L = 197.20'$
$T = 174.74'$	$T = 99.90'$
$R = 1,200.00'$	$R = 500.00'$
$SE = 0.06$	
$V = 40$ mph	

FOR RW AND EASEMENT  
STATIONS/OFFSETS SEE SHEET 13

NOTE: ALL DRIVES ARE 16' WIDE WITH  
10' RADIUS UNLESS OTHERWISE NOTED.



PLANS PREPARED BY:  
**RK&K**  
RUMMEL, KLEPPER & KAHL, LLP  
900 RIDGEFIELD DRIVE SUITE 350  
RALEIGH, NORTH CAROLINA 27609-3960  
NC LICENSE NO. F-0112 • (919) 878-9560