

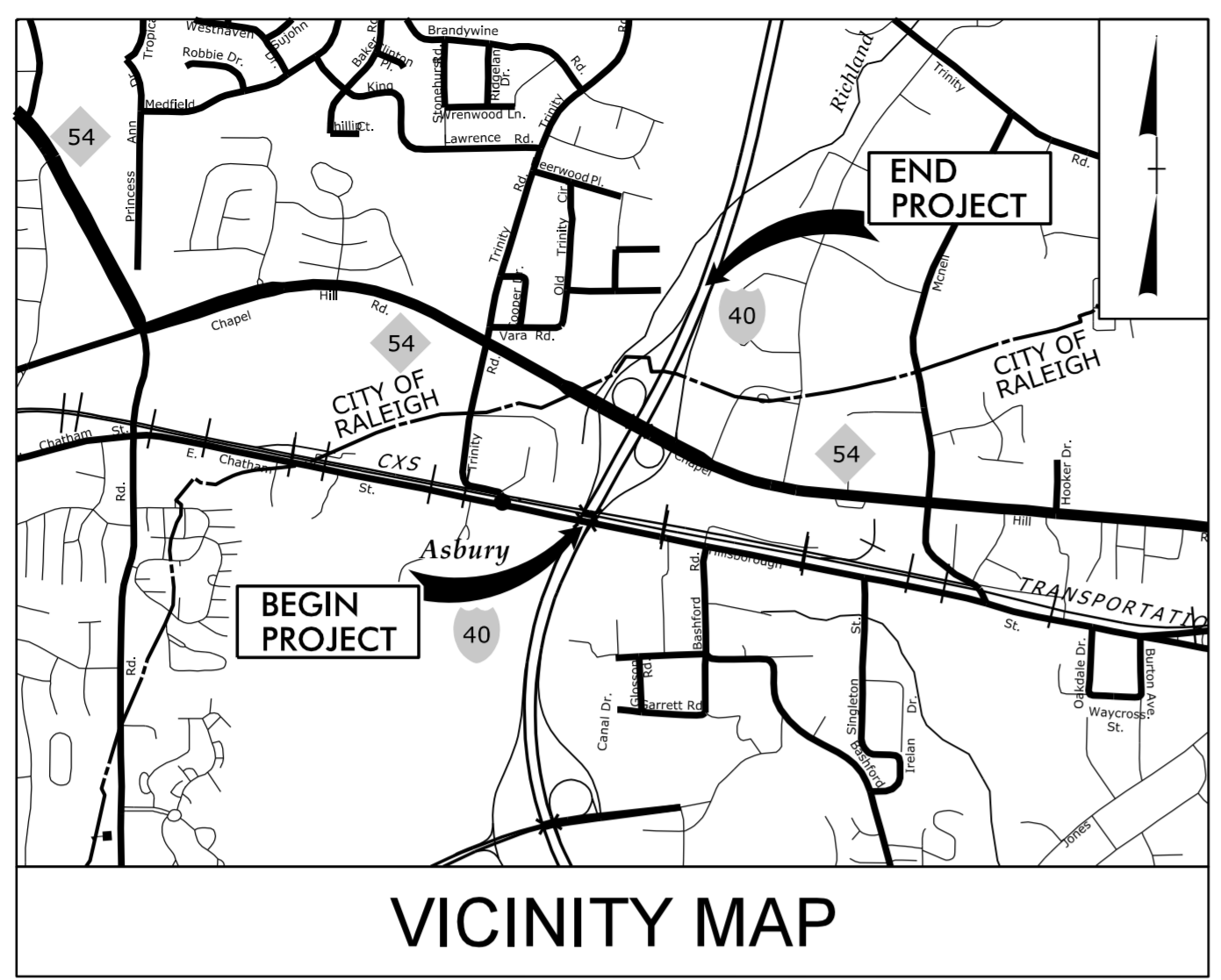
**This electronic collection of documents is provided
for the convenience of the user
and is Not a Certified Document –**

**The documents contained herein were originally issued
and sealed by the individuals whose names and license
numbers appear on each page, on the dates appearing
with their signature on that page.**

**This file or an individual page
shall not be considered a certified document.**

09/08/99

TIP PROJECT: I-5873



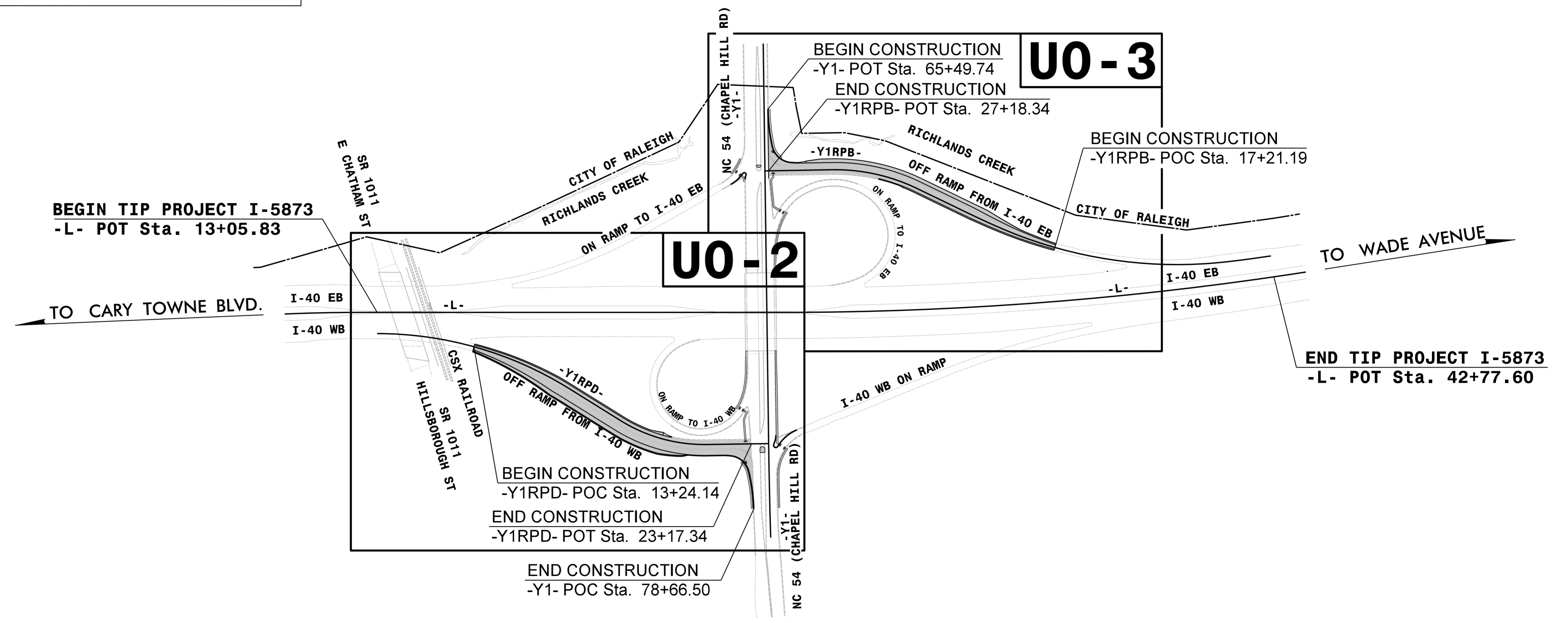
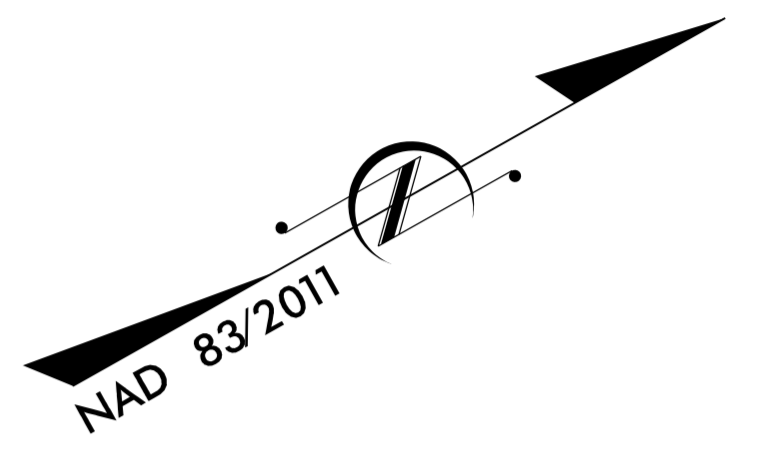
STATE OF NORTH CAROLINA
DIVISION OF HIGHWAYS

**UTILITIES BY OTHERS PLANS
WAKE COUNTY**

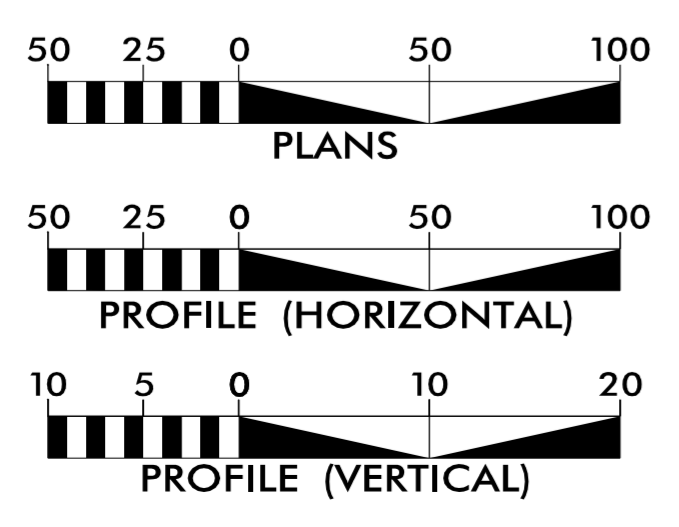
LOCATION: I-40 AT NC 54 INTERCHANGE IN RALEIGH
INTERCHANGE IMPROVEMENTS
TYPE OF WORK: POWER DISTRIBUTION, TELEPHONE,
& CATV RELOCATION

T.I.P. NO.	SHEET NO.
I-5873	UO-1

NOTE:
ALL UTILITY WORK SHOWN ON THIS SHEET IS DONE BY OTHERS.
NO PAYMENT WILL BE MADE TO THE CONTRACTOR FOR UTILITY WORK SHOWN ON THIS SHEET.



GRAPHIC SCALES



INDEX OF SHEETS

SHEET NO.:	DESCRIPTION:
UO-1	TITLE SHEET
UO-2 THRU UO-3	UBO PLAN SHEETS

UTILITY OWNERS WITH CONFLICTS

- (A) POWER DISTRIBUTION - DUKE ENERGY
- (B) TELEPHONE - SPIRIT COMMUNICATIONS
- (C) CATV - TWC/CHARTERS/SPECTRUM
- (D) POWERLIGHTING & ELECTRICAL - NCDOT

PREPARED IN THE OFFICE OF:

CH ENGINEERING

3220 GLEN ROYAL RD. RALEIGH, NC 27617
TELE 919.788.0224 FAX 919.788.0232
NC LICENSE #P0189

UTILITIES PROJECT ENGINEER
Mary Jo Lee, P.E.

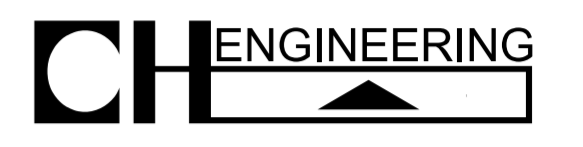
**DIVISION OF HIGHWAYS
DIVISION 5**
2612 N. DUKE STREET
DURHAM, 27704
P: 919-220-4600
F: 919-560-3371

JOHN W. BRAXTON, PE DIVISION PROJECT MANAGER
DONALD W. PROPER DIVISION UTILITIES ENGINEER
MONROE K. BROWN DIVISION UTILITIES COORDINATOR

10/23/2018 R:\Utilities\Engineering\UBO\Proj\I-5873_ut_tsh_U001_psh.dgn -USERNAME-

UTILITIES BY OTHERS

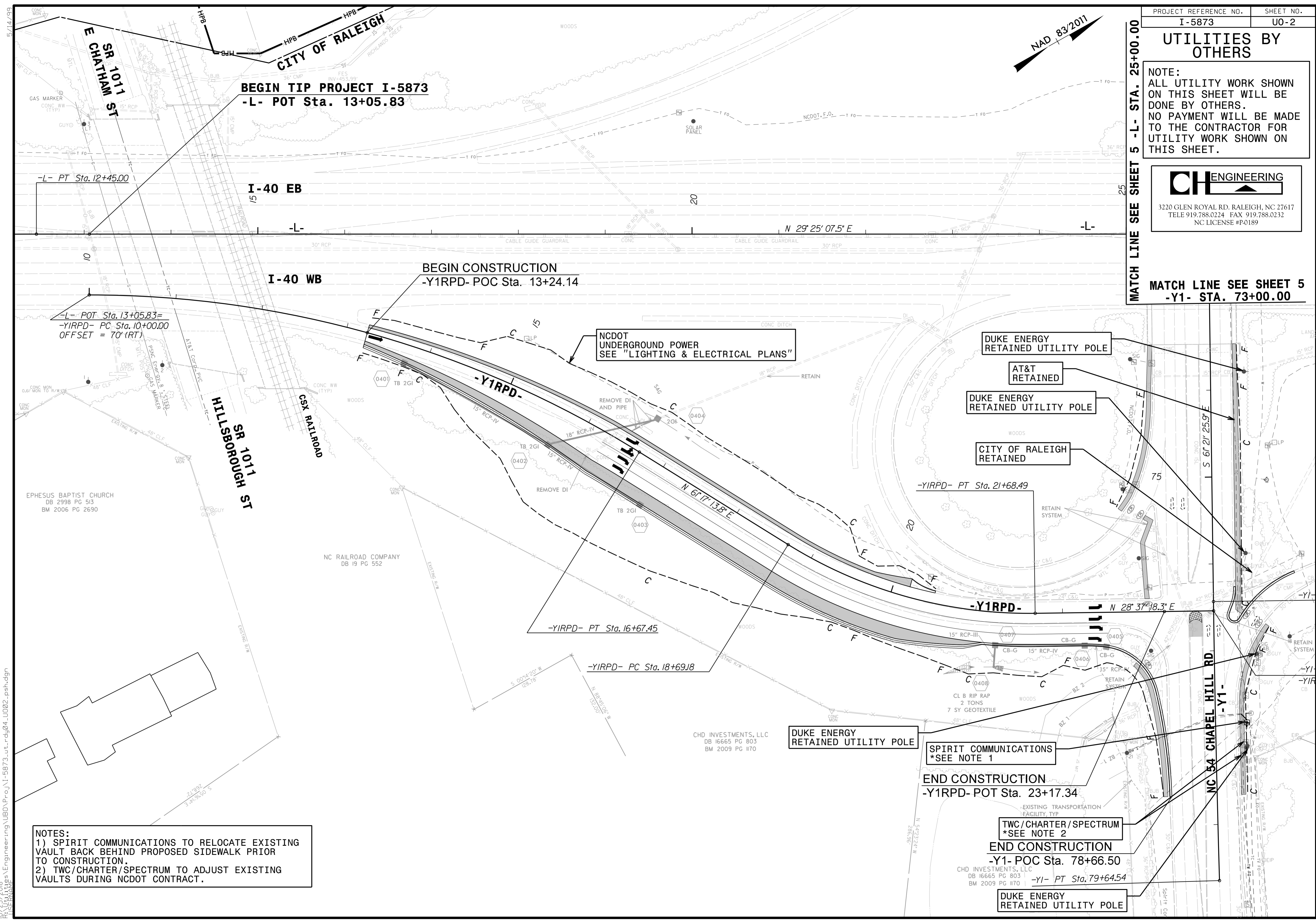
NOTE:
ALL UTILITY WORK SHOWN ON THIS SHEET WILL BE DONE BY OTHERS. NO PAYMENT WILL BE MADE TO THE CONTRACTOR FOR UTILITY WORK SHOWN ON THIS SHEET.



3220 GLEN ROYAL RD. RALEIGH, NC 27617
TELE 919.788.0224 FAX 919.788.0232
NC LICENSE #P0189

MATCH LINE SEE SHEET 5 -Y1- STA. 73+00.00

MATCH LINE SEE SHEET 5 -L- STA. 25+00.00



NOTES:
1) SPIRIT COMMUNICATIONS TO RELOCATE EXISTING VAULT BACK BEHIND PROPOSED SIDEWALK PRIOR TO CONSTRUCTION.
2) TWC/CHARTER/SPECTRUM TO ADJUST EXISTING VAULTS DURING NCDOT CONTRACT.

SPIRIT COMMUNICATIONS
*SEE NOTE 1

END CONSTRUCTION
-Y1RPD- POT Sta. 23+17.34

TWC/CHARTER/SPECTRUM
*SEE NOTE 2

END CONSTRUCTION
-Y1- POC Sta. 78+66.50

CHD INVESTMENTS, LLC
DB 16665 PG 803
BM 2009 PG 1170

DUKE ENERGY
RETAINED UTILITY POLE

DUKE ENERGY
RETAINED UTILITY POLE

CHD INVESTMENTS, LLC
DB 16665 PG 803
BM 2009 PG 1170

-Y1RPD- PT Sta. 16+67.45

-Y1RPD- PC Sta. 18+69.18

-Y1RPD- PT Sta. 21+68.49

BEGIN CONSTRUCTION
-Y1RPD- POC Sta. 13+24.14

BEGIN TIP PROJECT I-5873
-L- POT Sta. 13+05.83

-L- PT Sta. 12+45.00

-L- POT Sta. 13+05.83 =
-Y1RPD- PC Sta. 10+00.00
OFFSET = 70' (RT)

10/23/2018 Engineering\UBD\Project\I-5873-ut_rdy04_U002.psh.dgn

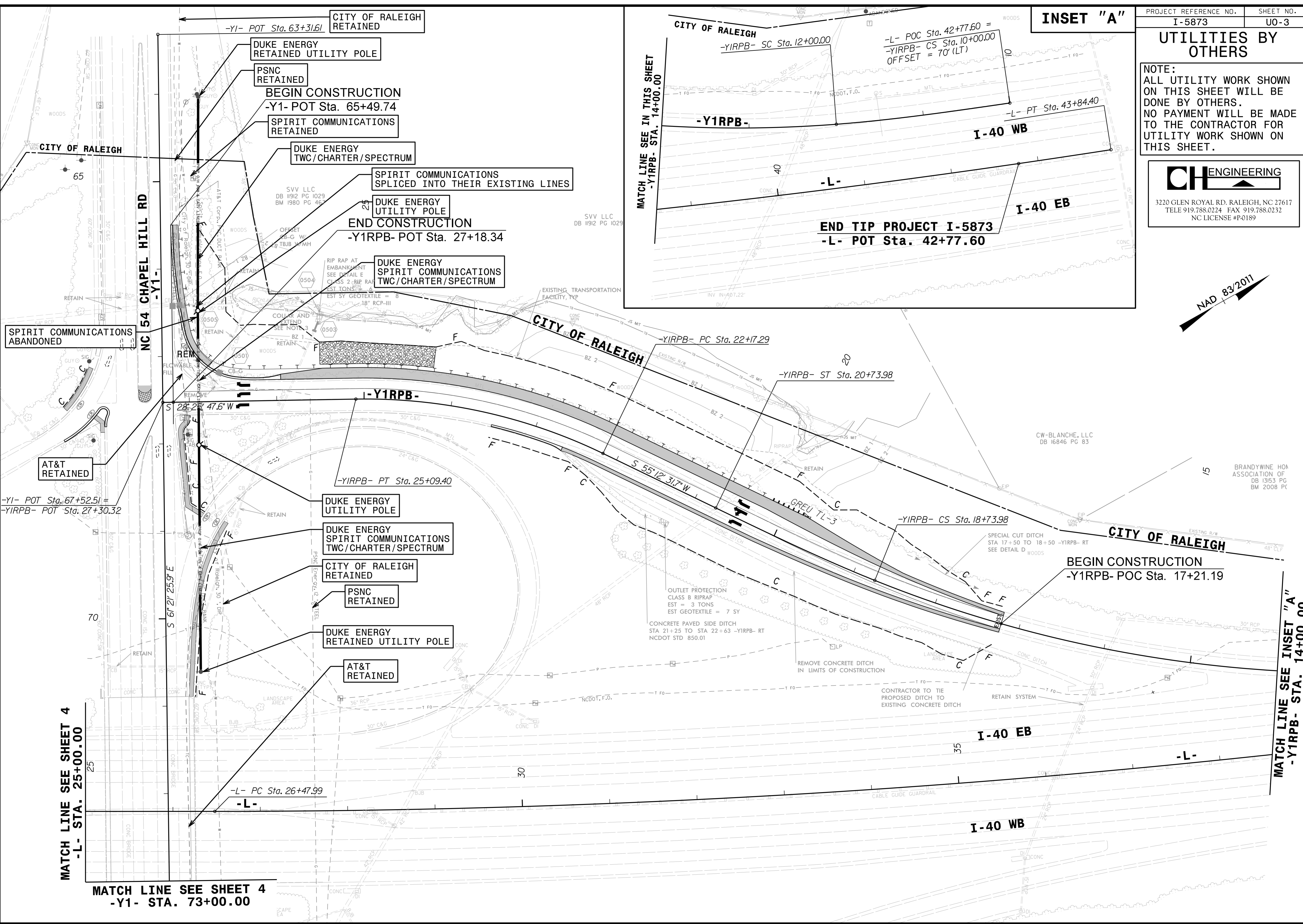
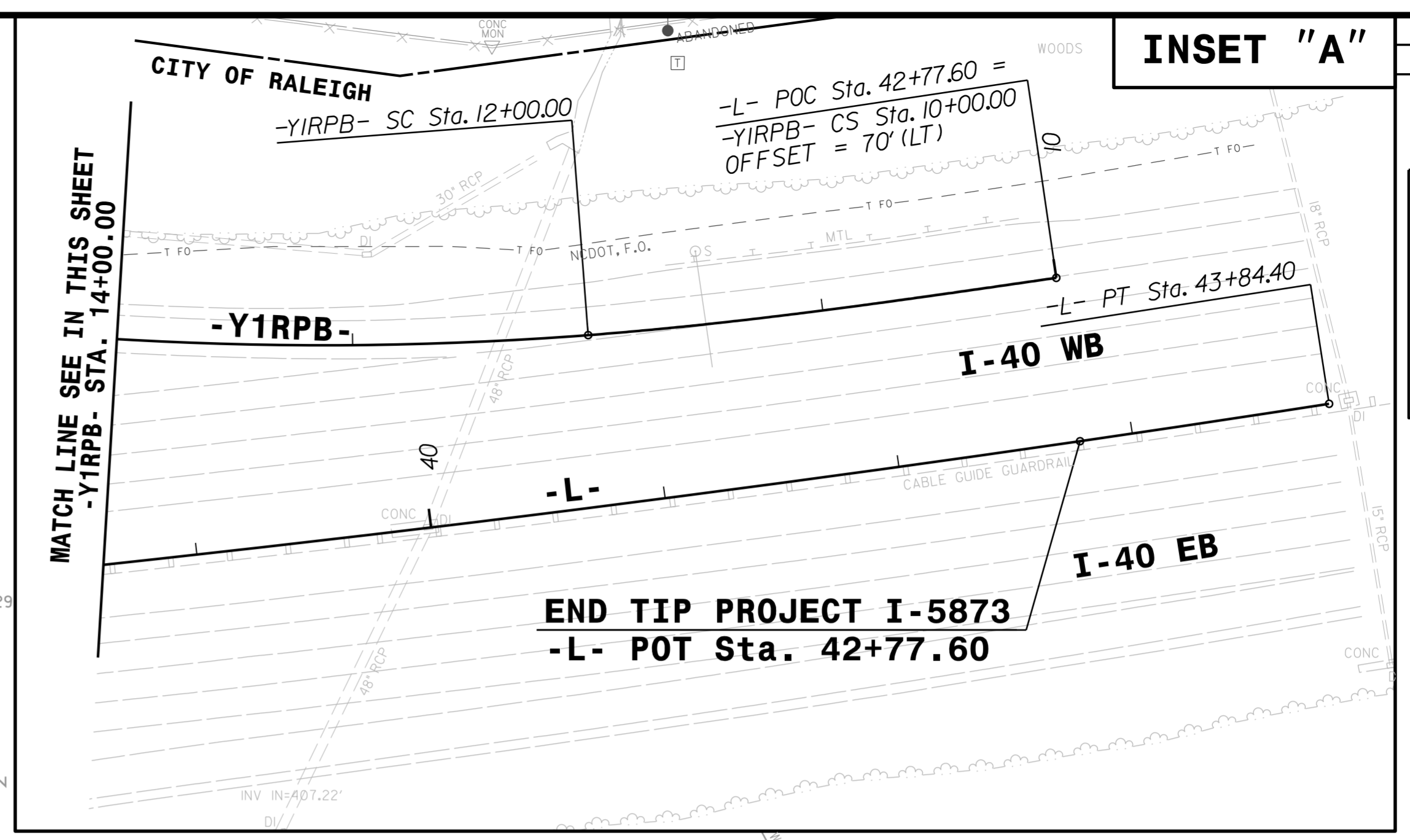
UTILITIES BY OTHERS

NOTE:
ALL UTILITY WORK SHOWN ON THIS SHEET WILL BE DONE BY OTHERS.
NO PAYMENT WILL BE MADE TO THE CONTRACTOR FOR UTILITY WORK SHOWN ON THIS SHEET.

CH ENGINEERING
3220 GLEN ROYAL RD. RALEIGH, NC 27617
TELE 919.788.0224 FAX 919.788.0232
NC LICENSE #P0189



INSET "A"



MATCH LINE SEE SHEET 4
-L- STA. 25+00.00

MATCH LINE SEE SHEET 4
-Y1- STA. 73+00.00

MATCH LINE SEE INSET "A"
-Y1RPB- STA. 14+00.00

10/23/2018
 P:\Projects\Engineering\UBO\Pro\I-5873-ut.-rdy\05_U003.psh.edn
 5/14/99