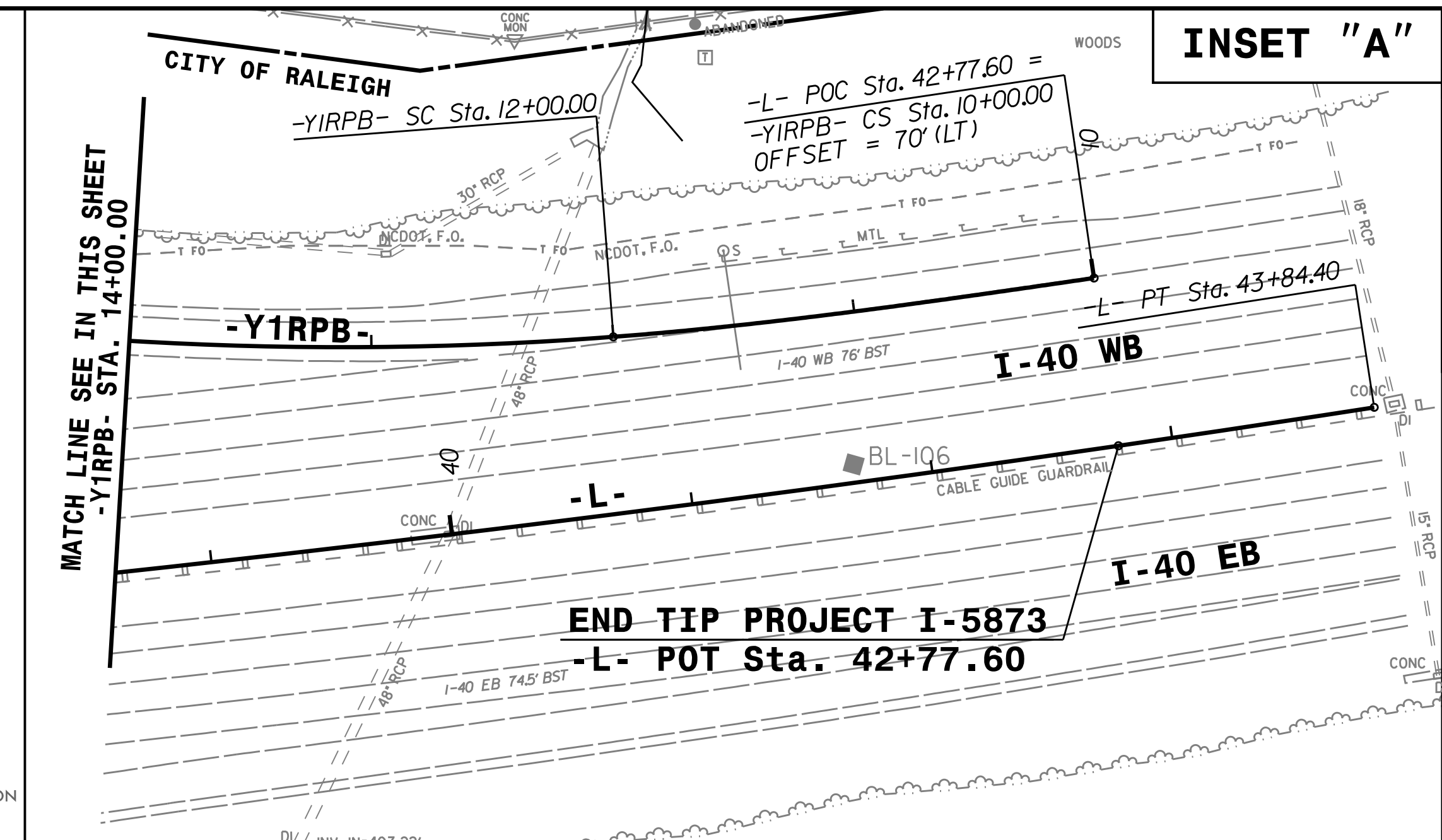


PROJECT REFERENCE NO. <b>I-5873</b>	SHEET NO. <b>EC-7/CONST.5</b>
RW SHEET NO.	
ROADWAY DESIGN ENGINEER	HYDRAULICS ENGINEER



SVV LLC  
DB 1912 PG 1029  
BM 1980 PG 467

**BEGIN CONSTRUCTION**  
-Y1- POT Sta. 65+49.74

**END CONSTRUCTION**  
-Y1RPB- POT Sta. 27+18.34

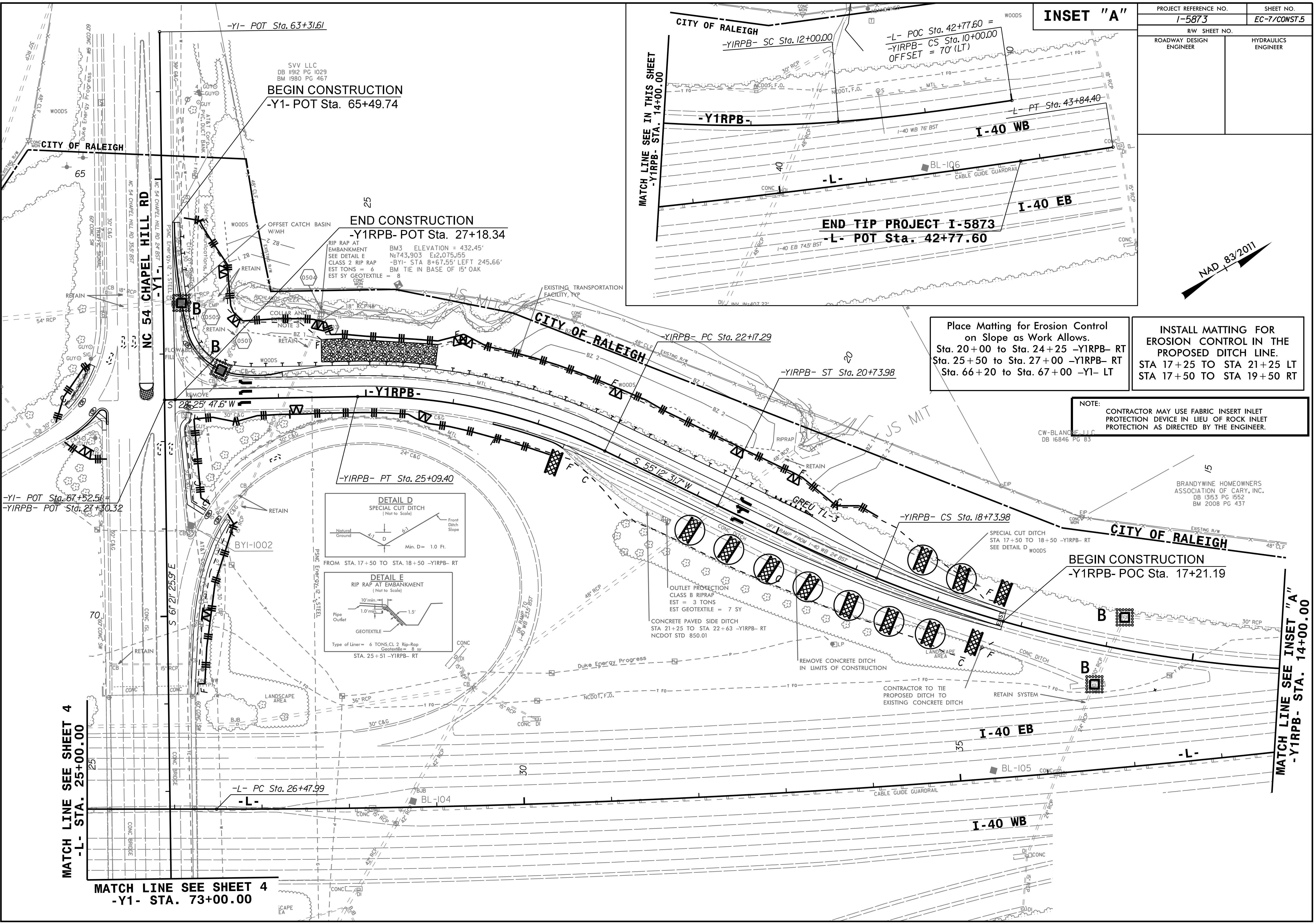
RIP RAP AT EMBANKMENT  
SEE DETAIL E  
CLASS 2 RIP RAP  
EST TONS = 6  
EST SY GEOTEXTILE = 8

BM3 ELEVATION = 432.45'  
N:743,903 E:2,075,155  
-BYI- STA 8+67.55' LEFT 245.66'  
BM TIE IN BASE OF 15' OAK

Place Matting for Erosion Control on Slope as Work Allows.  
Sta. 20+00 to Sta. 24+25 -Y1RPB- RT  
Sta. 25+50 to Sta. 27+00 -Y1RPB- RT  
Sta. 66+20 to Sta. 67+00 -Y1- LT

**INSTALL MATTING FOR EROSION CONTROL IN THE PROPOSED DITCH LINE.**  
STA 17+25 TO STA 21+25 LT  
STA 17+50 TO STA 19+50 RT

NOTE:  
CONTRACTOR MAY USE FABRIC INSERT INLET PROTECTION DEVICE IN LIEU OF ROCK INLET PROTECTION AS DIRECTED BY THE ENGINEER.



MATCH LINE SEE SHEET 4  
-L- STA. 25+00.00

MATCH LINE SEE SHEET 4  
-Y1- STA. 73+00.00

MATCH LINE SEE INSET "A"  
-Y1RPB- STA. 14+00.00