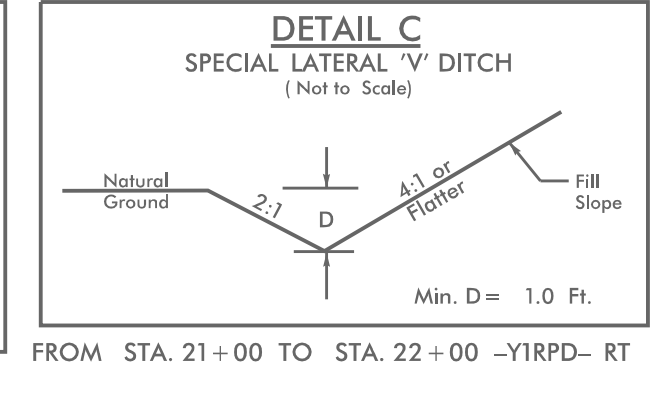
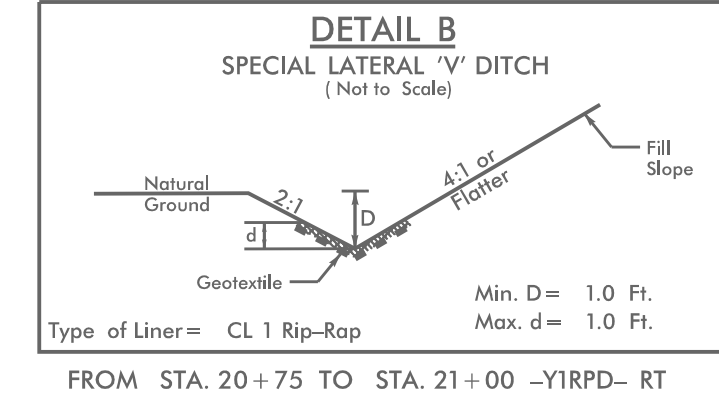
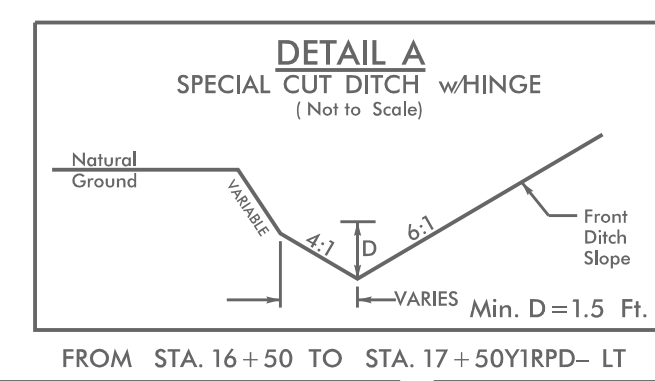
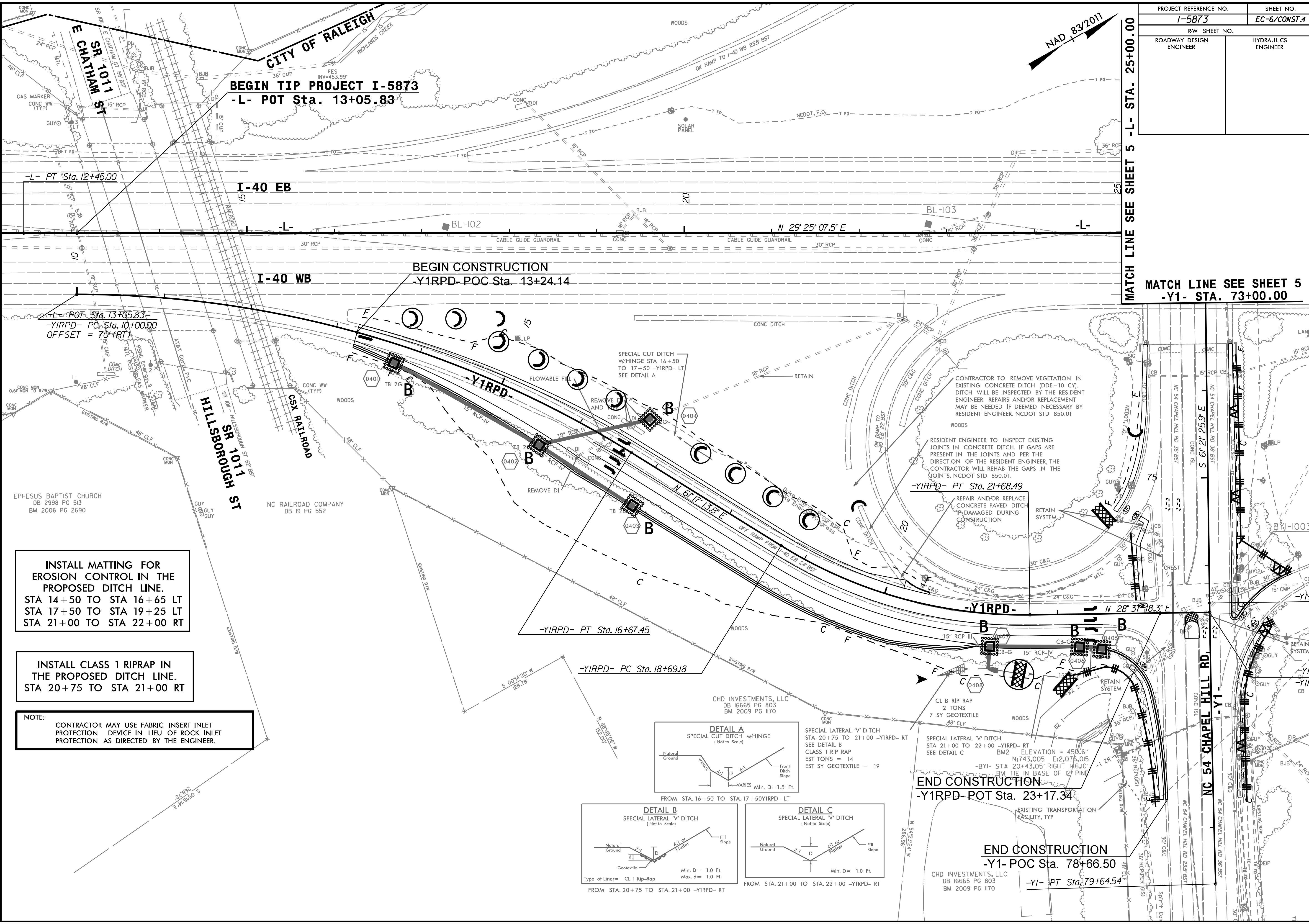


PROJECT REFERENCE NO. 1-5873	SHEET NO. EC-6/CONST.4
RW SHEET NO.	
ROADWAY DESIGN ENGINEER	HYDRAULICS ENGINEER

MATCH LINE SEE SHEET 5 -L- STA. 25+00.00

MATCH LINE SEE SHEET 5 -Y1- STA. 73+00.00



SPECIAL LATERAL 'V' DITCH
STA 20+75 TO 21+00 -Y1RPD- RT
SEE DETAIL B
CLASS 1 RIP RAP
EST TONS = 14
EST SY GEOTEXTILE = 19

SPECIAL LATERAL 'V' DITCH
STA 21+00 TO 22+00 -Y1RPD- RT
SEE DETAIL C
ELEVATION = 450.61'
BM2 N:743,005 E:2,076,015
-BYI- STA 20+43.05' RIGHT H6.10'
BM TIE IN BASE OF 12" PINE

END CONSTRUCTION
-Y1RPD- POT Sta. 23+17.34

END CONSTRUCTION
-Y1- POC Sta. 78+66.50

-Y1- PT Sta. 79+64.54