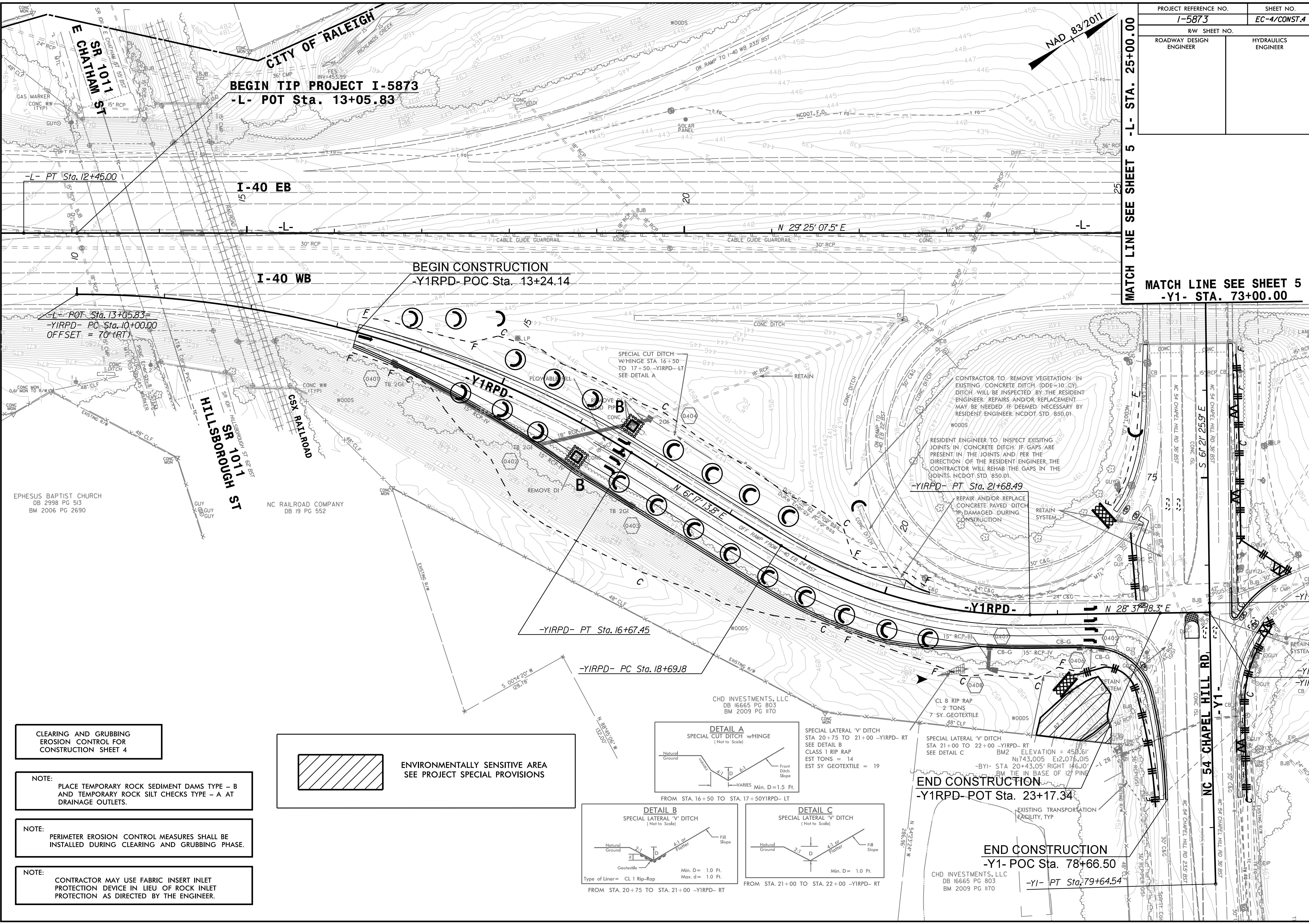


PROJECT REFERENCE NO. <b>1-5873</b>	SHEET NO. <b>EC-4/CONST.4</b>
RW SHEET NO.	
ROADWAY DESIGN ENGINEER	HYDRAULICS ENGINEER

MATCH LINE SEE SHEET 5 -L- STA. 25+00.00

MATCH LINE SEE SHEET 5 -Y1- STA. 73+00.00

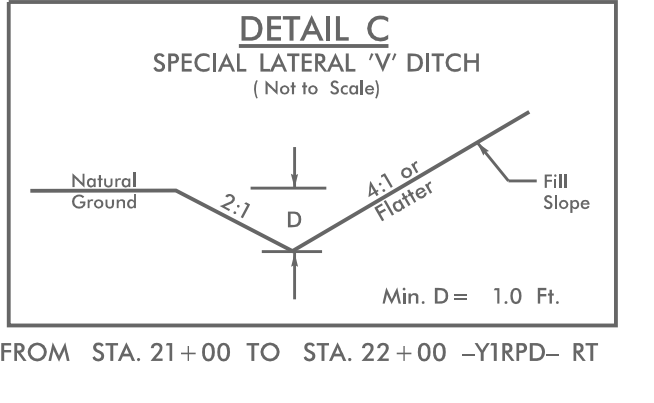
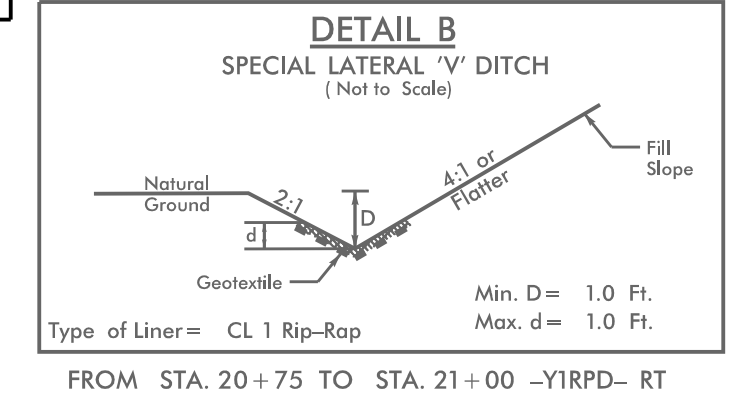
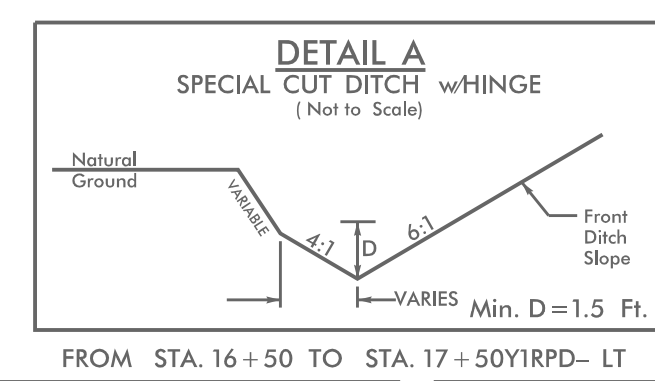


CLEARING AND GRUBBING  
EROSION CONTROL FOR  
CONSTRUCTION SHEET 4

NOTE:  
PLACE TEMPORARY ROCK SEDIMENT DAMS TYPE - B  
AND TEMPORARY ROCK SILT CHECKS TYPE - A AT  
DRAINAGE OUTLETS.

NOTE:  
PERIMETER EROSION CONTROL MEASURES SHALL BE  
INSTALLED DURING CLEARING AND GRUBBING PHASE.

NOTE:  
CONTRACTOR MAY USE FABRIC INSERT INLET  
PROTECTION DEVICE IN LIEU OF ROCK INLET  
PROTECTION AS DIRECTED BY THE ENGINEER.



SPECIAL LATERAL 'V' DITCH  
STA 21+00 TO 22+00 -Y1RPD- RT  
SEE DETAIL C

SPECIAL LATERAL 'V' DITCH  
w/HINGE STA 16+50  
TO 17+50 -Y1RPD- LT  
SEE DETAIL A

REPAIR AND/OR REPLACE  
CONCRETE PAVED DITCH  
IF DAMAGED DURING  
CONSTRUCTION

RESIDENT ENGINEER TO INSPECT EXISTING  
JOINTS IN CONCRETE DITCH. IF GAPS ARE  
PRESENT IN THE JOINTS AND PER THE  
DIRECTION OF THE RESIDENT ENGINEER, THE  
CONTRACTOR WILL REHAB THE GAPS IN THE  
JOINTS. NCDOT STD. 850.01

CONTRACTOR TO REMOVE VEGETATION IN  
EXISTING CONCRETE DITCH (DDE=10 CY).  
DITCH WILL BE INSPECTED BY THE RESIDENT  
ENGINEER. REPAIRS AND/OR REPLACEMENT  
MAY BE NEEDED IF DEEMED NECESSARY BY  
RESIDENT ENGINEER. NCDOT STD. 850.01

CHD INVESTMENTS, LLC  
DB 16665 PG 803  
BM 2009 PG 170