

**This electronic collection of documents is provided
for the convenience of the user
and is Not a Certified Document –**

**The documents contained herein were originally issued
and sealed by the individuals whose names and license
numbers appear on each page, on the dates appearing
with their signature on that page.**

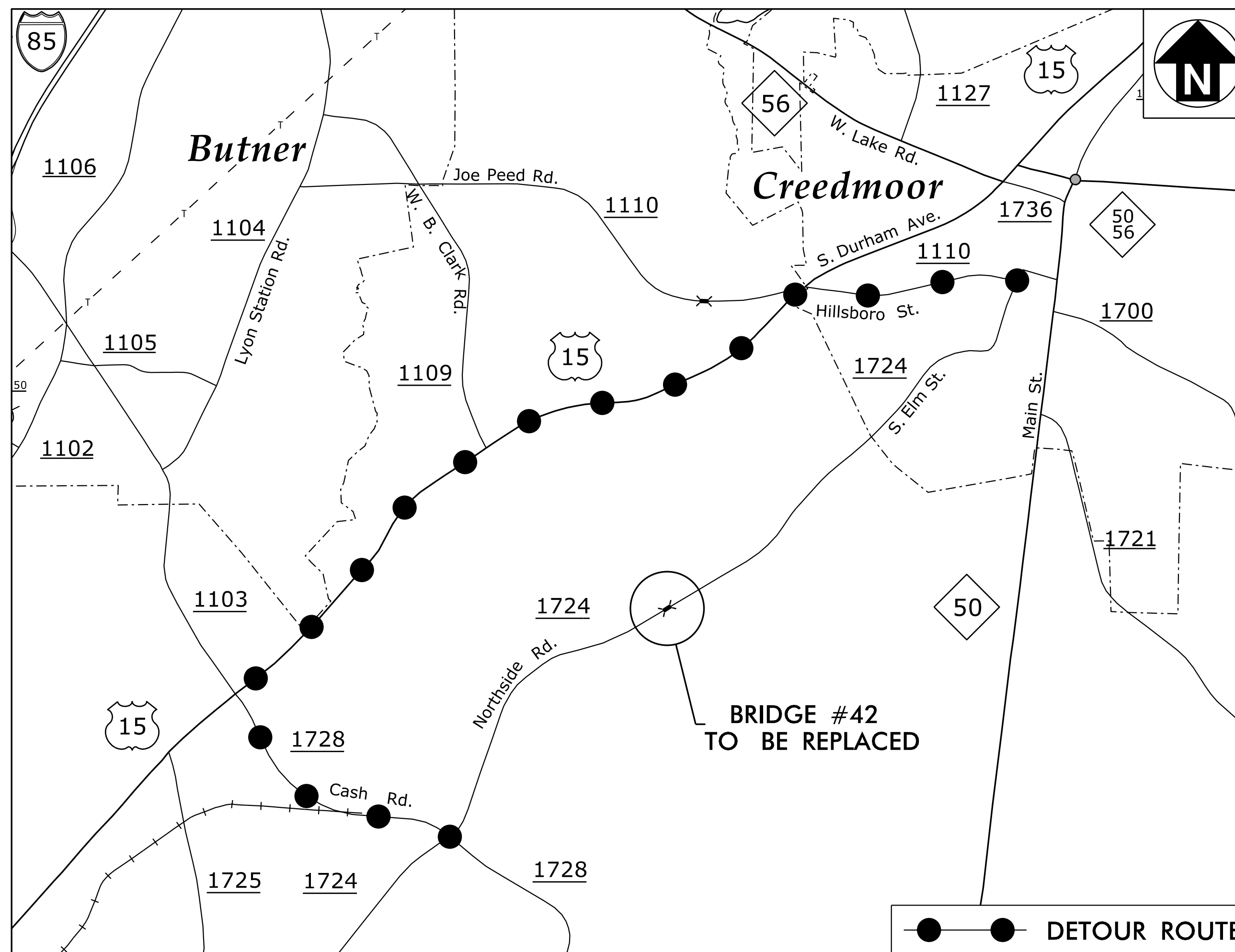
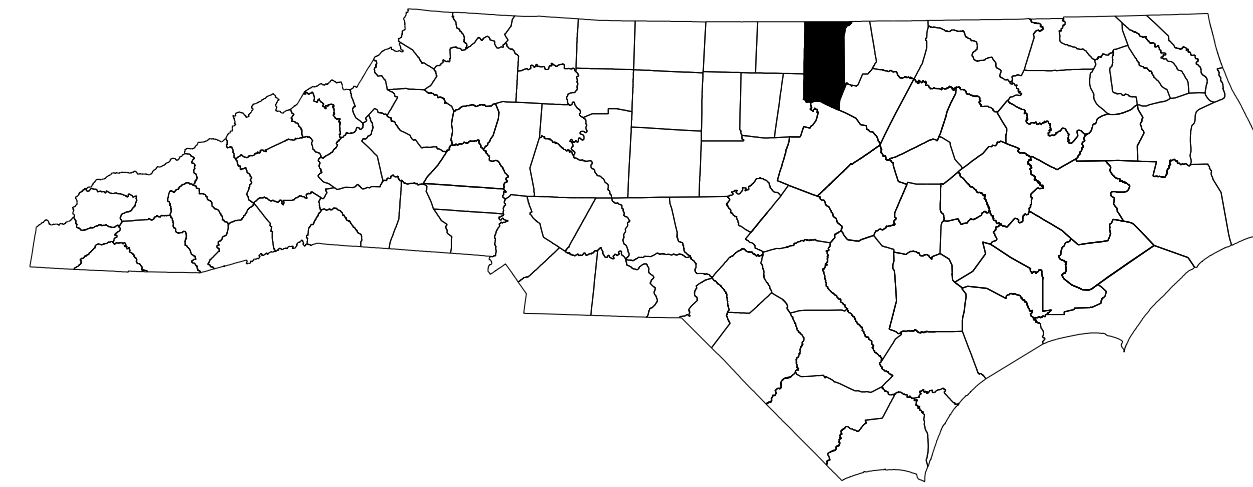
**This file or an individual page
shall not be considered a certified document.**

STATE OF NORTH CAROLINA
DIVISION OF HIGHWAYS

TRANSPORTATION MANAGEMENT PLAN

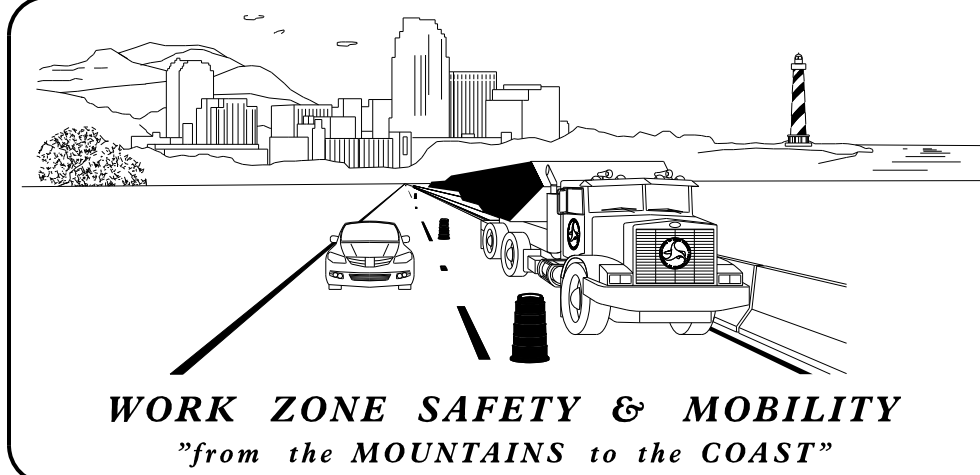
GRANVILLE COUNTY

BRIDGE NO. 42 OVER LEDGE CREEK ON SR 1724 (NORTHSIDE ROAD)



SHEET NO.	TITLE
TMP-1	TITLE SHEET AND INDEX OF SHEETS
TMP-2	LIST OF APPLICABLE ROADWAY STANDARD DRAWINGS, LEGEND, GENERAL NOTES, PHASING AND FINAL PAVEMENT MARKING SCHEDULE
TMP-3	TEMPORARY TRAFFIC CONTROL PLAN
TMP-4	SPECIAL SIGN DESIGN

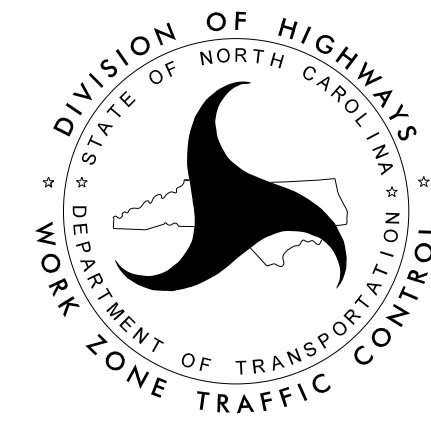
DOCUMENT NOT CONSIDERED FINAL
UNLESS ALL SIGNATURES COMPLETED



PREPARED IN THE OFFICE OF MOTT MACDONALD
FOR NORTH CAROLINA DEPARTMENT OF TRANSPORTATION

TIM JORDAN, PE *TRAFFIC CONTROL PROJECT ENGINEER*

BRIAN PHILLIPS *TRAFFIC CONTROL DESIGN ENGINEER*



M M
MOTT
MACDONALD

PO Box 700
Fuquay-Varina, NC 27526
(919) 552-2253
(919) 552-2254 (Fax)
www.mottmac.com/americas

LICENSE NO. F-0669

APPROVED: _____
DATE: _____

SEAL

9/11/2018 2:09:04 PM
R:\Roadway\Proj\B-5677_TC_TMP_1.dgn
P:\56855

B-5677

TIP PROJECT:

GENERAL NOTES

CHANGES MAY BE REQUIRED WHEN PHYSICAL DIMENSIONS IN THE DETAIL DRAWINGS, STANDARD DETAILS, AND ROADWAY DETAILS ARE NOT ATTAINABLE TO MEET FIELD CONDITIONS OR RESULT IN DUPLICATE OR UNDESIRED OVERLAPPING OF DEVICES. MODIFICATION MAY INCLUDE: MOVING, SUPPLEMENTING, COVERING, OR REMOVAL OF DEVICES AS DIRECTED BY THE ENGINEER.

THE FOLLOWING GENERAL NOTES APPLY AT ALL TIMES FOR THE DURATION OF THE CONSTRUCTION PROJECT EXCEPT WHEN OTHERWISE NOTED IN THE PLAN OR DIRECTED BY THE ENGINEER.

LANE AND SHOULDER CLOSURE REQUIREMENTS

- A) WHEN PERSONNEL AND/OR EQUIPMENT ARE WORKING WITHIN 15 FT OF AN OPEN TRAVEL LANE, CLOSE THE NEAREST OPEN SHOULDER USING ROADWAY STANDARD DRAWING NO. 1101.04 UNLESS THE WORK AREA IS PROTECTED BY BARRIER OR GUARDRAIL OR A LANE CLOSURE IS INSTALLED.

TRAFFIC PATTERN ALTERATIONS

- B) NOTIFY THE ENGINEER AND LOCAL SCHOOLS & EMS THIRTY (30) CALENDAR DAYS PRIOR TO ANY TRAFFIC PATTERN ALTERATION.

SIGNING

- C) PROVIDE SIGNING AND DEVICES REQUIRED TO CLOSE THE ROAD ACCORDING TO THE ROADWAY STANDARD DRAWINGS AND TRAFFIC CONTROL PLANS.

PROVIDE SIGNING REQUIRED FOR THE OFF-SITE DETOUR ROUTE AS SHOWN IN THE TRAFFIC CONTROL PLANS.

- D) COVER OR REMOVE ALL SIGNS AND DEVICES REQUIRED TO CLOSE THE ROAD WHEN ROAD CLOSURE IS NOT IN OPERATION.

COVER OR REMOVE ALL SIGNS REQUIRED FOR THE OFF-SITE DETOUR WHEN THE DETOUR IS NOT IN OPERATION.

- E) ENSURE ALL NECESSARY SIGNING IS IN PLACE PRIOR TO ALTERING ANY TRAFFIC PATTERN.

TRAFFIC CONTROL DEVICES

- F) PLACE TYPE III BARRICADES, WITH "ROAD CLOSED" SIGN R11-2 ATTACHED, OF SUFFICIENT LENGTH TO CLOSE ENTIRE ROADWAY.

PAVEMENT MARKINGS AND MARKERS

- G) INSTALL PAVEMENT MARKINGS AND MARKERS ON THE FINAL SURFACE ACCORDING TO THE ROADWAY STANDARD DRAWINGS.

- H) TIE PROPOSED PAVEMENT MARKING LINES TO EXISTING PAVEMENT MARKING LINES.

MISCELLANEOUS

- I) MAINTAIN ACCESS TO ALL RESIDENCES AND BUSINESSES BETWEEN THE CLOSURE POINTS AT ALL TIMES DURING CONSTRUCTION.

PHASING

- STEP 1: PLACE MESSAGE SIGNS USING ROADWAY STANDARD DRAWING NUMBERS 1101.04, SHEET 1 OF 1, 1101.11, SHEET 1 OF 4, 1101.03, SHEET 1 OF 9, AND SHEET TMP-3, INSTALL AND COVER DETOUR SIGNING.
- STEP 2: USING ROADWAY STANDARD DRAWING NUMBER 1101.03, SHEET 1 OF 9, UNCOVER OFF-SITE DETOUR SIGNING AND INSTALL TYPE III BARRICADES TO CLOSE SR 1724 (NORTHSIDE ROAD) TO THRU TRAFFIC.
- STEP 3: PLACE TRAFFIC ONTO OFF-SITE DETOUR. REMOVE CHANGEABLE MESSAGE SIGNS. PERFORM PROPOSED BRIDGE AND ROADWAY CONSTRUCTION. PLACE FINAL PAVEMENT MARKINGS AND MARKERS.
- STEP 4: REMOVE TYPE III BARRICADES FROM OLD SR 1724 (NORTHSIDE ROAD) AND REOPEN ROADWAY TO TRAFFIC. REMOVE ALL DETOUR SIGNING.

TRAFFIC MANAGEMENT PLAN

LEGEND

PROJECT REFERENCE NUMBER	SHEET NO.
B-5677 GRANVILLE 42	TMP-2

GENERAL

- DIRECTION OF TRAFFIC FLOW
- DIRECTION OF PEDESTRIAN TRAFFIC FLOW
- EXIST. PVMT.
- NORTH ARROW
- PROPOSED PVMT.
- TEMP. SHORING (LOCATION PURPOSES ONLY)

WORK AREA

REMOVAL

USER DEFINED (IF NEEDED)

USER DEFINED (IF NEEDED)

SIGNALS

- EXISTING
- PROPOSED
- TEMPORARY

PAVEMENT MARKINGS

- EXISTING LINES
- TEMPORARY LINES

TRAFFIC CONTROL DEVICES

- BARRICADE (TYPE III)
- CONE
- DRUM SKINNY DRUM TUBULAR MARKER
- TEMPORARY CRASH CUSHION
- FLASHING ARROW BOARD
- FLAGGER
- LAW ENFORCEMENT
- TRUCK MOUNTED ATTENUATOR (TMA)
- CHANGEABLE MESSAGE SIGN

TEMPORARY SIGNING

- PORTABLE SIGN
- STATIONARY SIGN
- STATIONARY OR PORTABLE SIGN

PAVEMENT MARKERS

- CRYSTAL/CRYSTAL
- CRYSTAL/RED
- YELLOW/YELLOW

PAVEMENT MARKING SYMBOLS

- PAVEMENT MARKING SYMBOLS

NCDOT ROADWAY STANDARD DRAWINGS

THE FOLLOWING ROADWAY STANDARDS AS APPEAR IN "ROADWAY STANDARD DRAWINGS" - HIGHWAY DESIGN BRANCH- N.C. DEPARTMENT OF TRANSPORTATION - RALEIGH, N.C., DATED JANUARY 2018 ARE APPLICABLE TO THIS PROJECT AND BY REFERENCE HEREBY ARE CONSIDERED A PART OF THESE PLANS:

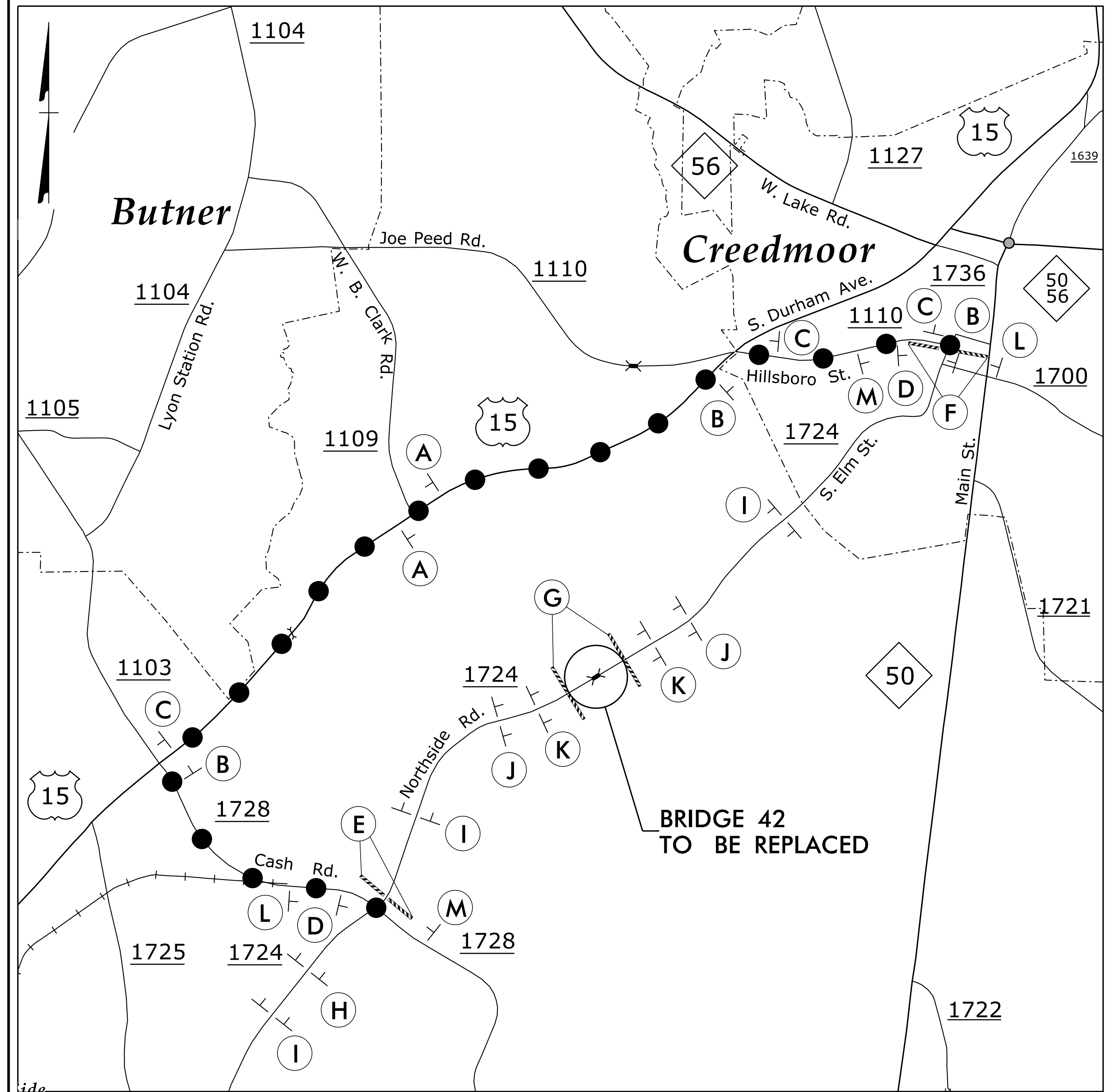
STD. NO.	TITLE
1101.03	TEMPORARY ROAD CLOSURES
1101.04	TEMPORARY SHOULDER CLOSURES
1101.11	TRAFFIC CONTROL DESIGN TABLES
1110.01	STATIONARY WORK ZONE SIGNS
1110.02	PORTABLE WORK ZONE SIGNS
1135.01	CONES
1145.01	BARRICADES
1205.01	PAVEMENT MARKINGS - LINE TYPES AND OFFSETS
1205.02	PAVEMENT MARKINGS - TWO-LANE AND MULTI-LANE ROADWAYS
1205.12	PAVEMENT MARKINGS - BRIDGES
1261.01	GUARDRAIL AND BARRIER DELINEATORS - INSTALLATION SPACING
1261.02	GUARDRAIL AND BARRIER DELINEATORS - TYPES AND MOUNTING
1262.01	GUARDRAIL END DELINEATION

FINAL PAVEMENT MARKING SCHEDULE

DESCRIPTION	QUANTITY
THERMOPLASTIC WHITE EDGELINE (4")	1,300 LF
THERMOPLASTIC YELLOW DOUBLE CENTER (4")	1,300 LF

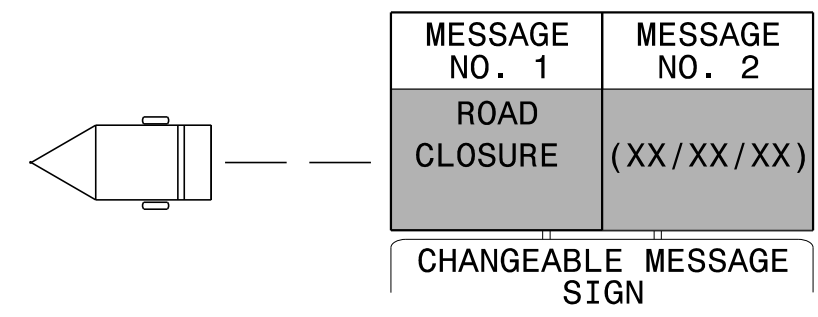
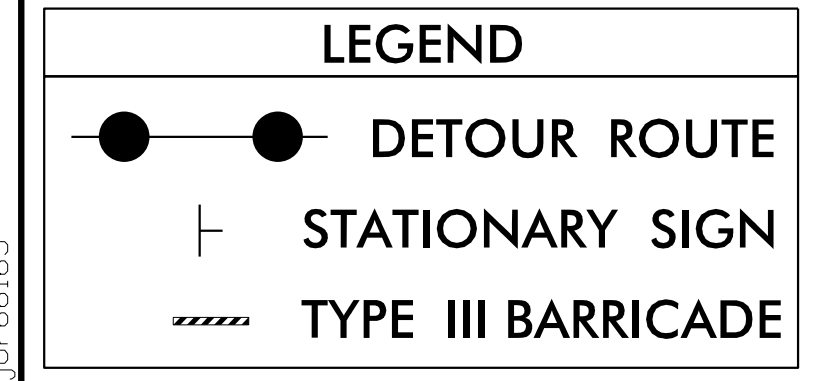
12/4/2018 1:19:37 PM R:\Roadway\Proj\B-5677-TC-TMP-TMP-2.dgn jpr66165

<p>MOTT MACDONALD PO Box 100 Fayetteville, NC 27526 (919) 552-2253 (919) 552-2254 (Fax) www.mottmac.com/america LICENSE NO. F-0669</p>	APPROVED: DATE: 12/4/2018 	<p>DIVISION OF HIGHWAYS STATE OF NORTH CAROLINA DEPARTMENT OF TRANSPORTATION WORK ZONE TRAFFIC CONTROL</p>	GENERAL NOTES ROADWAY STANDARD DRAWINGS PHASING PAVEMENT MARKING SCHEDULE
	DOCUMENT NOT CONSIDERED FINAL UNLESS ALL SIGNATURES COMPLETED		



NOTES: REFER TO ROADWAY STANDARD DRAWING NO. 1101.03, SHEETS 1 AND 2 OF 9, FOR ADDITIONAL SIGN SPACING REQUIREMENTS APPROACHING PROJECT SITE CLOSURE POINT.

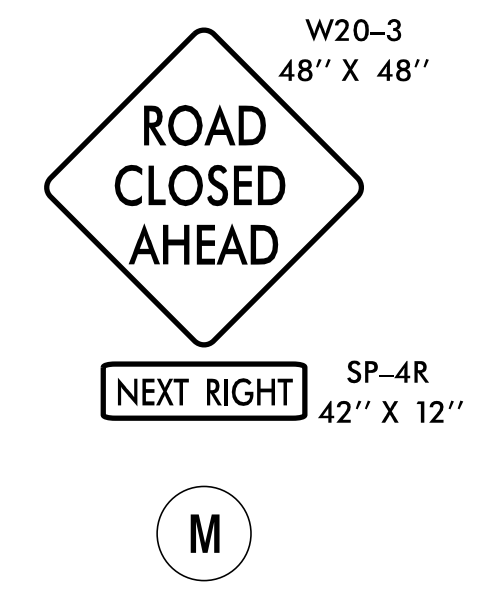
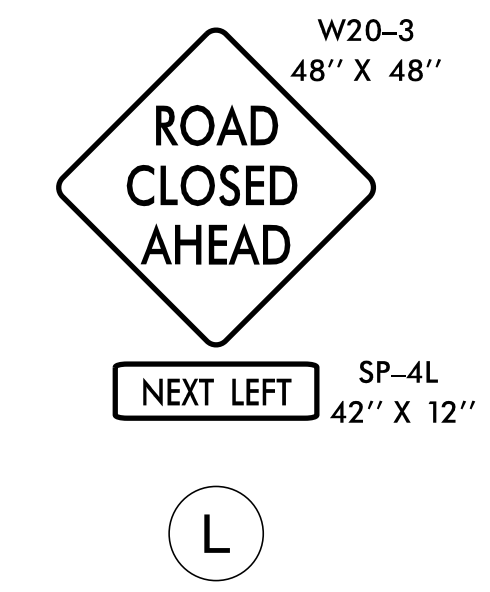
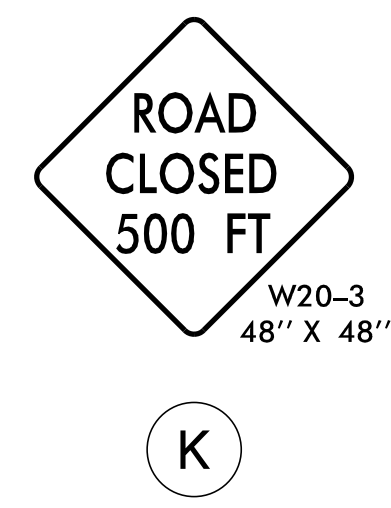
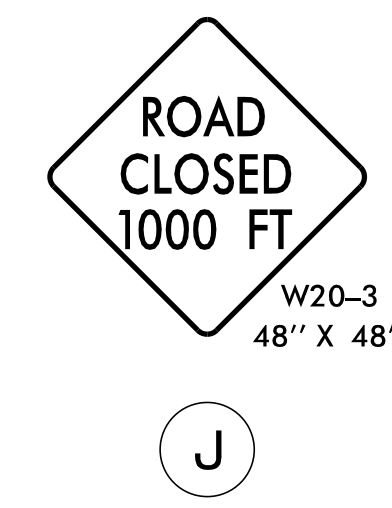
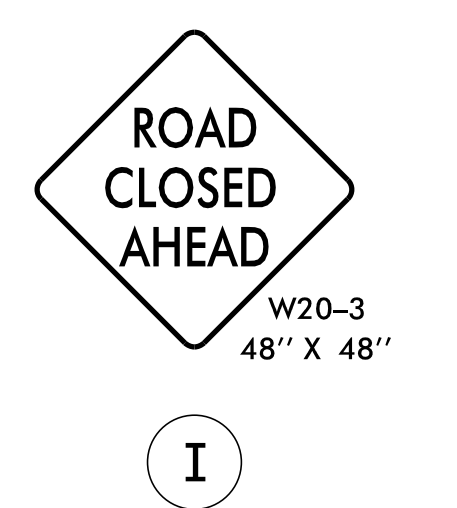
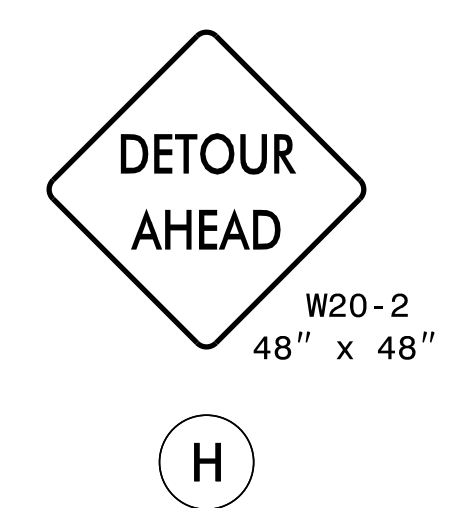
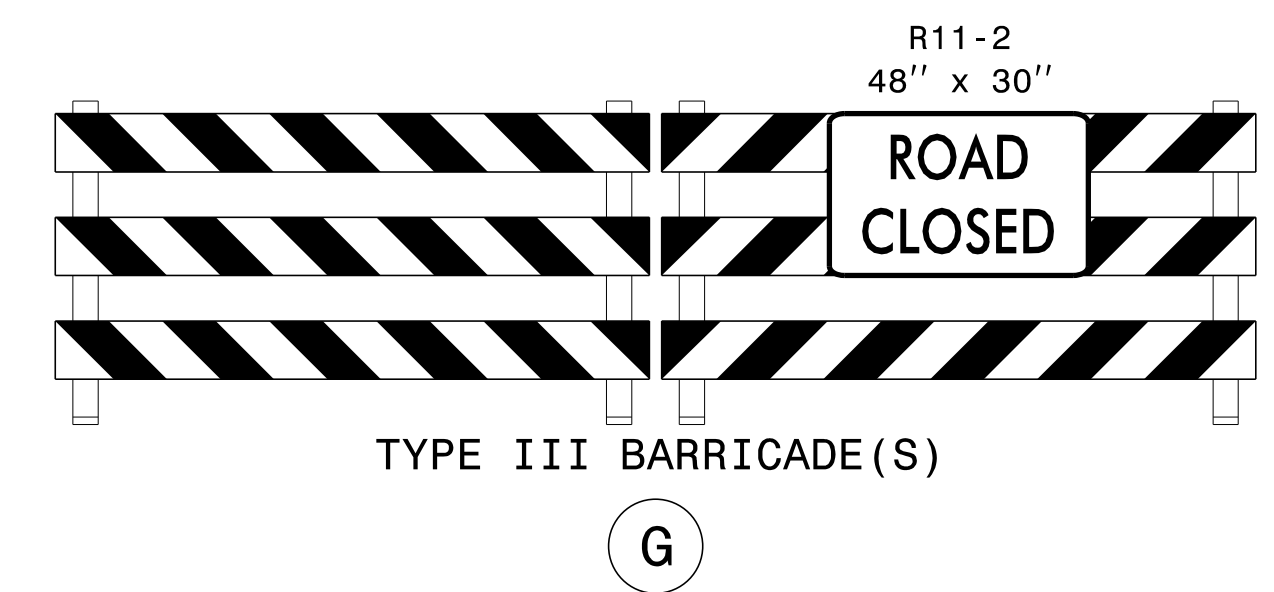
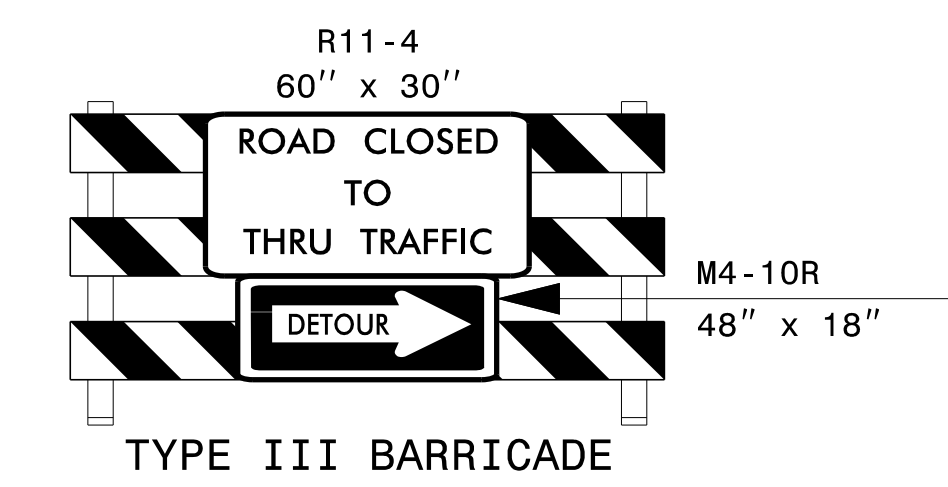
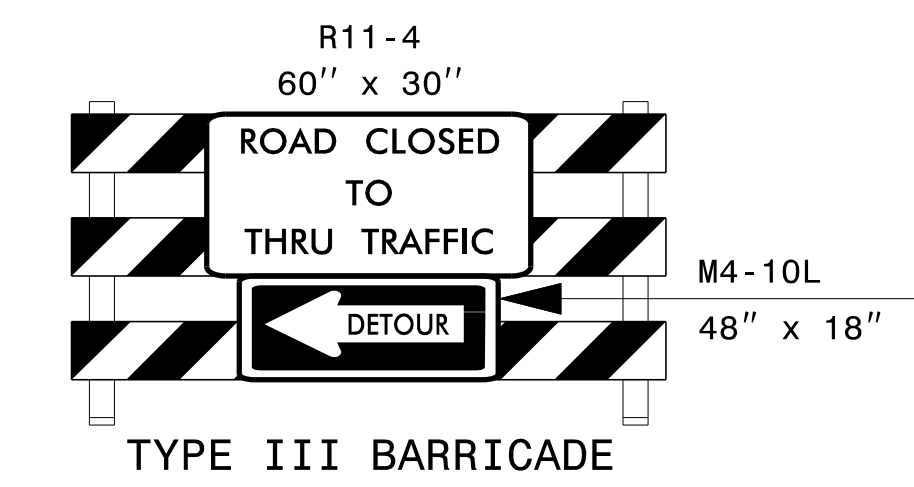
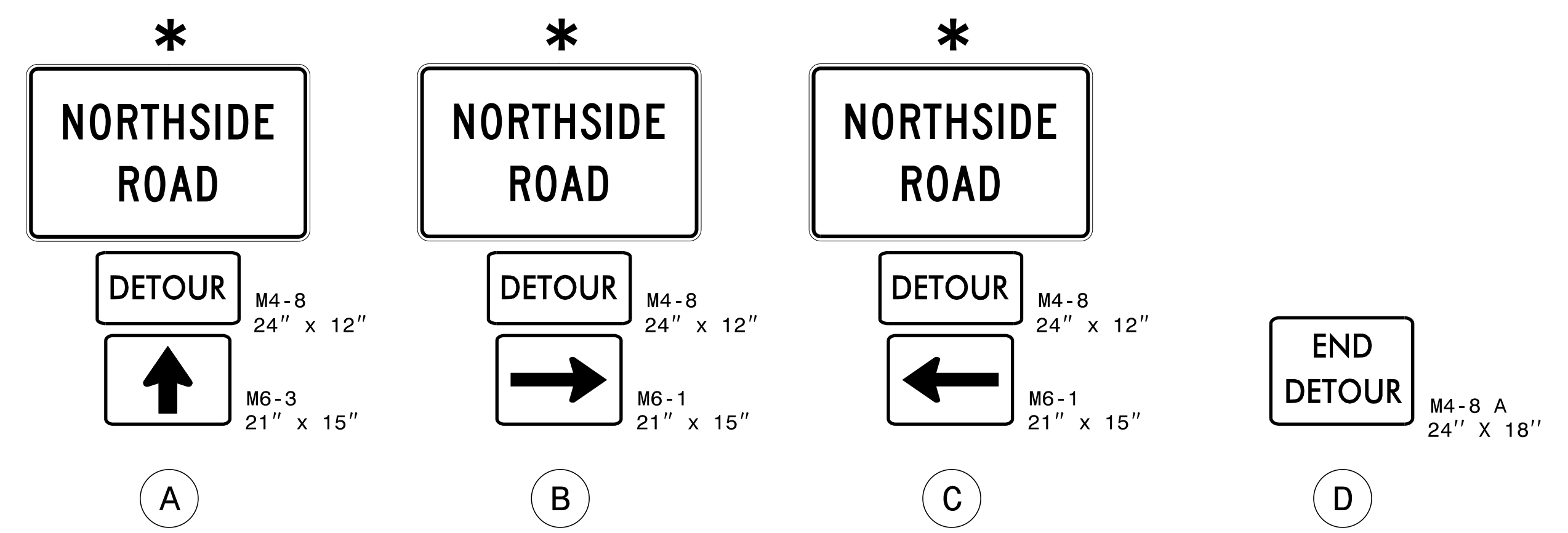
* SEE SHEET TMP-4 FOR SPECIAL SIGN DESIGNS



USE CHANGEABLE MESSAGE SIGNS FOR A 14-DAY COUNTDOWN ROAD CLOSURE NOTICE PRIOR TO CLOSING NORTHSIDE ROAD TO THRU TRAFFIC.

INSTALL CHANGEABLE MESSAGE SIGNS AT THE DETOUR POINTS AND AS DIRECTED BY THE ENGINEER.

TRAFFIC CONTROL TEMPORARY SIGNING AND DEVICES



<p>M</p> <p>MOTT MACDONALD</p> <p>PO Box 100 Fayetteville, NC 27526 (919) 552-2253 (919) 552-2254 (Fax) www.mottmac.com/americas LICENSE NO. F-0669</p>	<p>APPROVED: James Timothy Jordan DATE: 12/4/2018</p> <p>SEAL</p> <p>SEAL 21102</p> <p>ENGINEER</p> <p>JAMES TIMOTHY JORDAN</p>	<p>DIVISION OF HIGHWAYS</p> <p>STATE OF NORTH CAROLINA</p> <p>DEPARTMENT OF TRANSPORTATION</p> <p>WORK ZONE TRAFFIC CONTROL</p>	<p>NORTHSIDE ROAD OFF-SITE DETOUR</p> <p>TRAFFIC CONTROL TEMPORARY SIGNING AND DEVICES</p>
	<p>DOCUMENT NOT CONSIDERED FINAL UNLESS ALL SIGNATURES COMPLETED</p>		

12/4/2018 1:19:41 PM
 R:\Roadway\Proj\B-5677-TC-TMP-3.dgn
 jor66165

