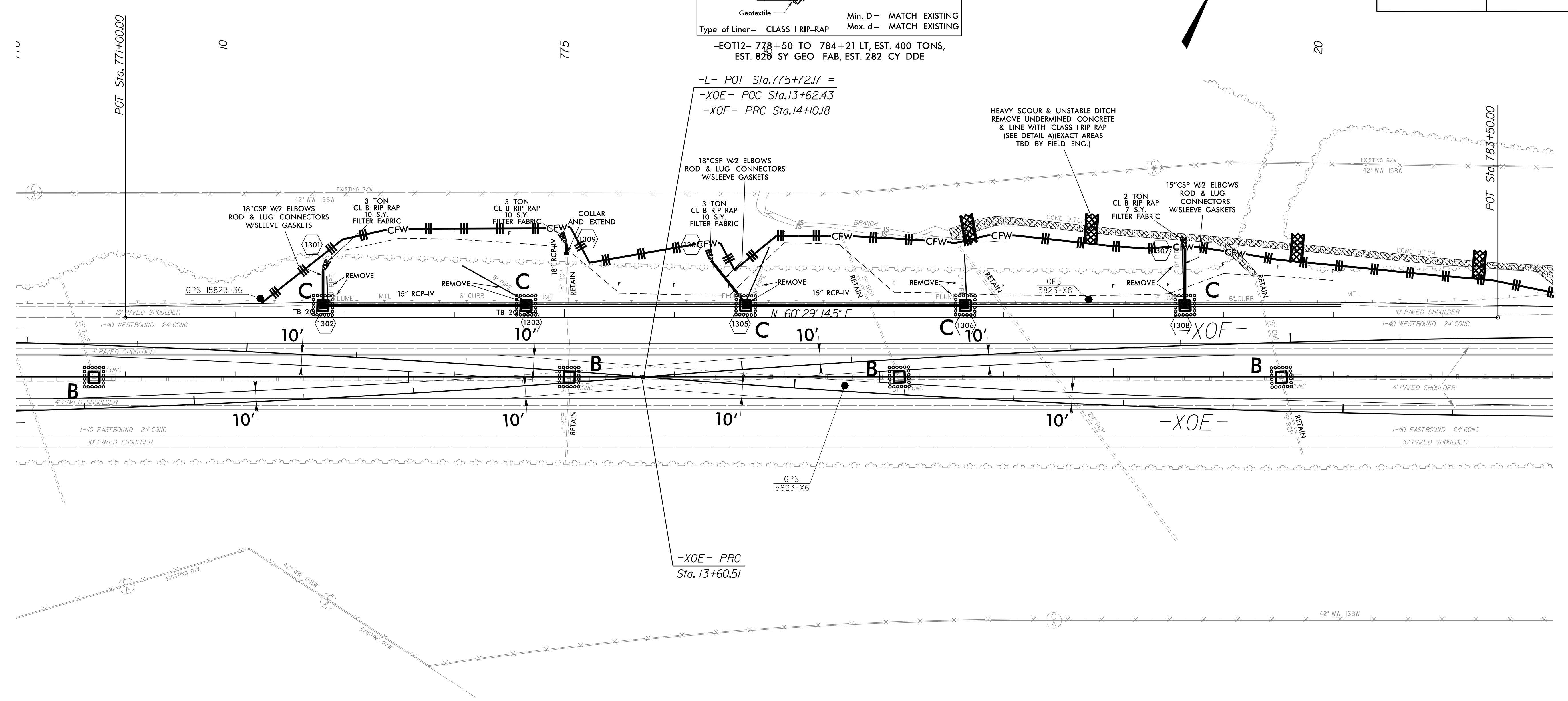
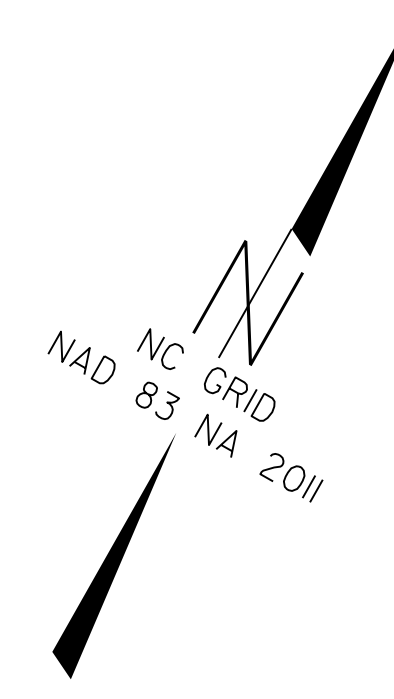
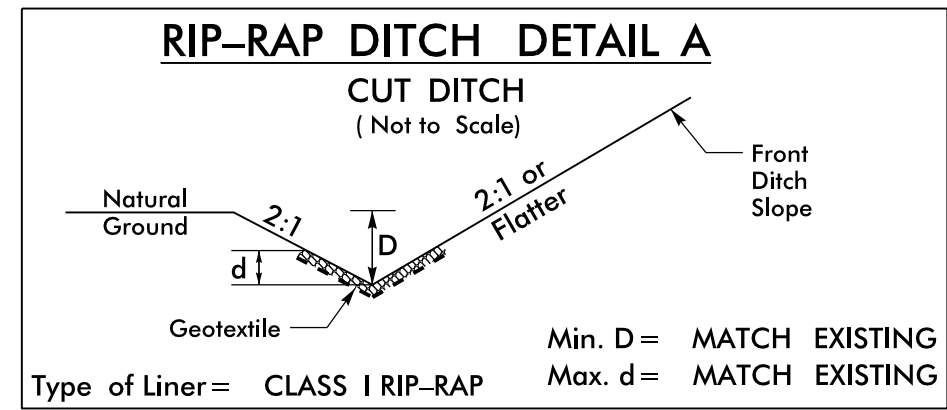


PROJECT REFERENCE NO.	SHEET NO.
1-5823	EC-23
RW SHEET NO.	
ROADWAY DESIGN ENGINEER	HYDRAULICS ENGINEER



-L- POT Sta. 775+72.17 =
 -XOE- POC Sta. 13+62.43
 -XOF- PRC Sta. 14+10.18

HEAVY SCOUR & UNSTABLE DITCH
 REMOVE UNDERMINED CONCRETE
 & LINE WITH CLASS 1 RIP RAP
 (SEE DETAIL AT EXACT AREAS
 TBD BY FIELD ENG.)

-XOE- PRC
 Sta. 13+60.51

FINAL EROSION CONTROL PLAN
 FOR CONSTRUCTION SHEET 13

28 NOV 2018 11:29
 C:\Program Files\Autodesk\AutoCAD 2018\Projects\1-5823-40-Davie\ErostonControl\15823.dde_EC-23.dgn
 USER: JEFFREY