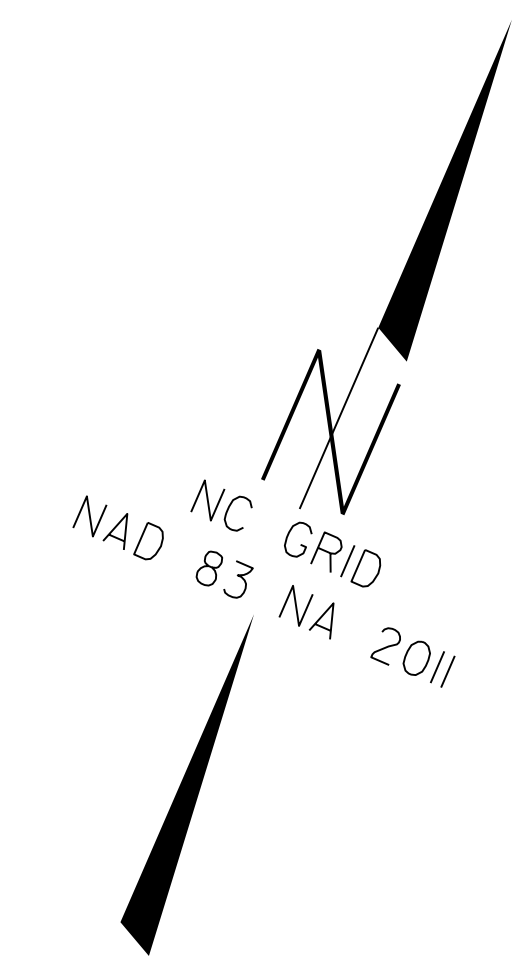


PROJECT REFERENCE NO.	SHEET NO.
1-5823	EC-22
RW SHEET NO.	
ROADWAY DESIGN ENGINEER	HYDRAULICS ENGINEER



PIs Sta 749+02.08
 $\Delta = 0^{\circ} 30' 00.0''$
 $L_s = 200.00'$
 $LT = 133.33'$
 $ST = 66.67'$

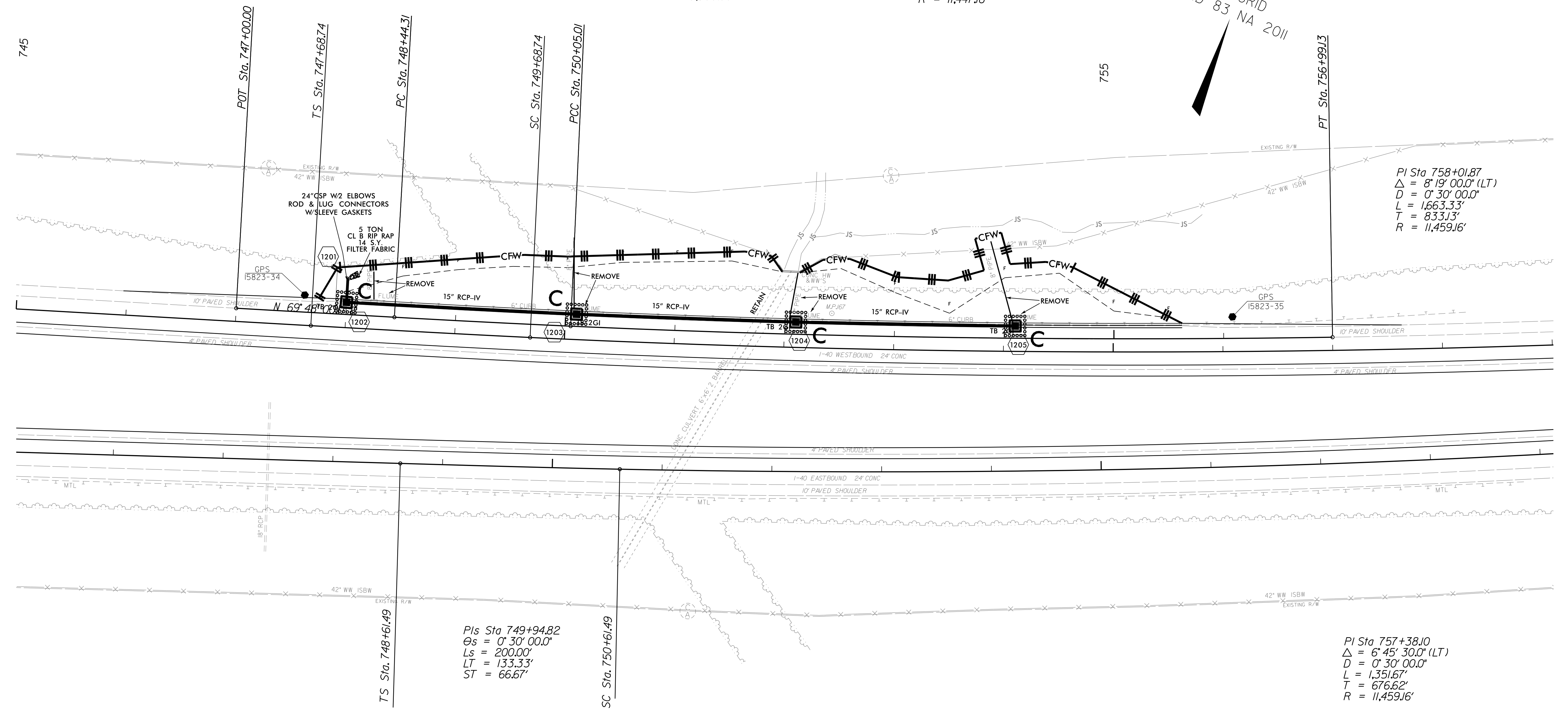
PI Sta 749+24.66
 $\Delta = 0^{\circ} 40' 55.3''$ (LT)
 $D = 0^{\circ} 25' 27.9''$
 $L = 160.70'$
 $T = 80.35'$
 $R = 13,500.00'$

PI Sta 753+52.18
 $\Delta = 3^{\circ} 28' 27.3''$ (LT)
 $D = 0^{\circ} 30' 01.9''$
 $L = 694.12'$
 $T = 347.17'$
 $R = 11,447.16'$

PI Sta 758+01.87
 $\Delta = 8^{\circ} 19' 00.0''$ (LT)
 $D = 0^{\circ} 30' 00.0''$
 $L = 1,663.33'$
 $T = 833.13'$
 $R = 11,459.16'$

PIs Sta 749+94.82
 $\Delta = 0^{\circ} 30' 00.0''$
 $L_s = 200.00'$
 $LT = 133.33'$
 $ST = 66.67'$

PI Sta 757+38.10
 $\Delta = 6^{\circ} 45' 30.0''$ (LT)
 $D = 0^{\circ} 30' 00.0''$
 $L = 1,351.67'$
 $T = 676.62'$
 $R = 11,459.16'$



FINAL EROSION CONTROL PLAN FOR CONSTRUCTION SHEET 12

29 NOV 2018 11:29
 C:\P\Development\TIP_Projects\1-5823-40-Davie\ErosionControl\15823.ddc_EC-22.dgn
 USER: