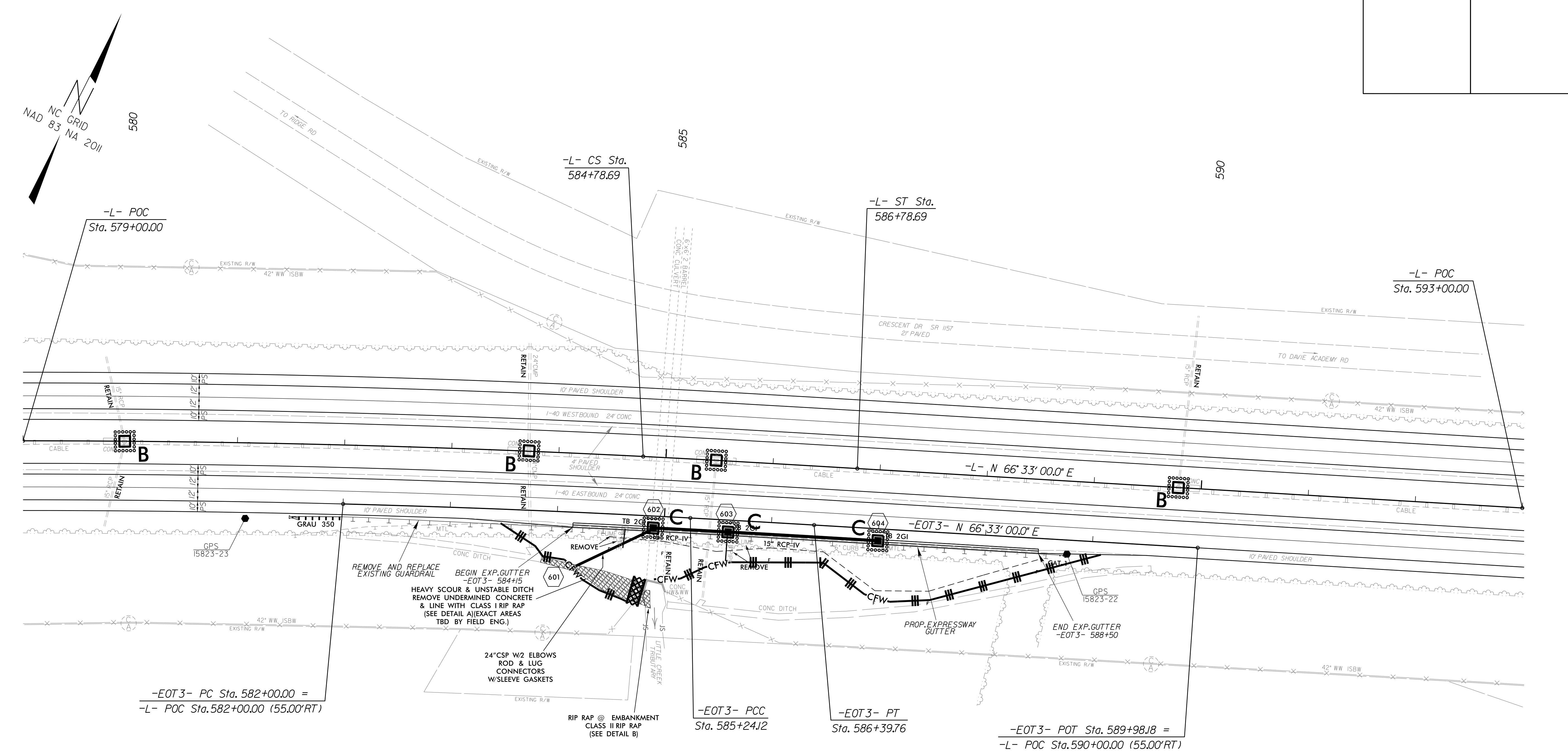
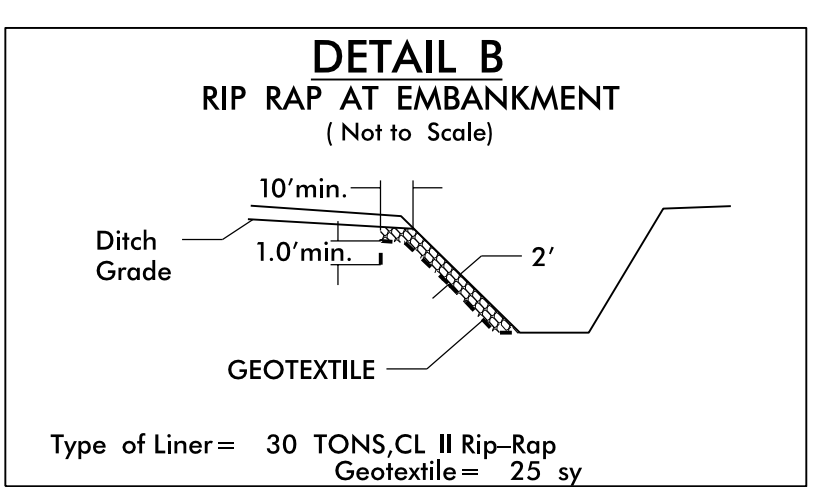
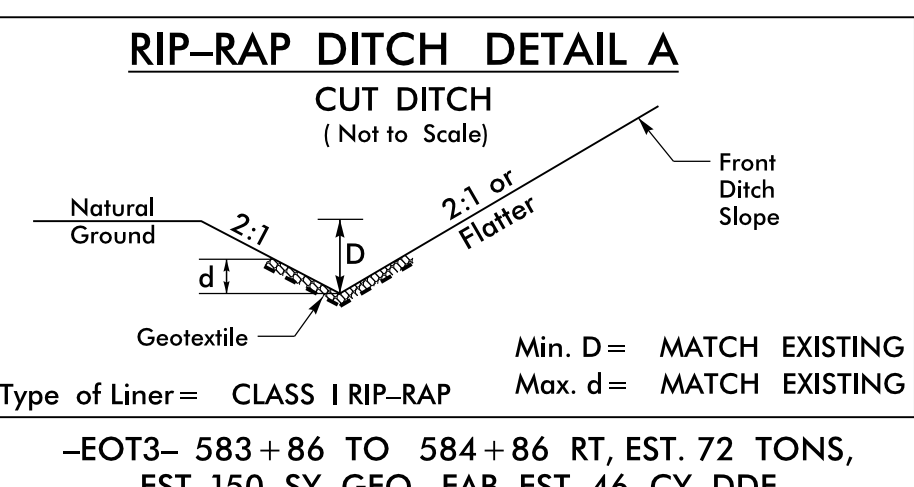


PROJECT REFERENCE NO. 1-5823	SHEET NO. EC-16
RW SHEET NO.	
ROADWAY DESIGN ENGINEER	HYDRAULICS ENGINEER



-EOT3- PC Sta. 582+00.00 =  
-L- POC Sta. 582+00.00 (55.00' RT)



**-L-**

PI Sta = 573+42.47	PIs Sta 585+45.36
$\Delta = 1^{\circ} 24' 00.00''$ (RT)	$\theta_s = 0^{\circ} 30' 00.0''$
$D = 0^{\circ} 30' 00.00''$	LT = 200.00'
$L = 2,280.00$	ST = 66.67'
$T = 1,143.78$	
$R = 11,459.16$	

**-EOT2-**

PI Sta 583+62.07	PI Sta 585+81.94
$\Delta = 1^{\circ} 37' 42.4''$ (RT)	$\Delta = 0^{\circ} 15' 54.1''$ (RT)
$D = 0^{\circ} 30' 08.7''$	$D = 0^{\circ} 13' 45.1''$
$L = 324.12'$	$L = 115.64'$
$T = 162.07'$	$T = 57.82'$
$R = 11,404.16'$	$R = 25,000.00'$

FINAL EROSION CONTROL PLAN  
FOR CONSTRUCTION SHEET 6

8/17/99  
28 NOV 2016 14:29  
C:\P\Projects\1-5823-40-Davie\Ernst\Control\15823.ddc, EC-16.dgn