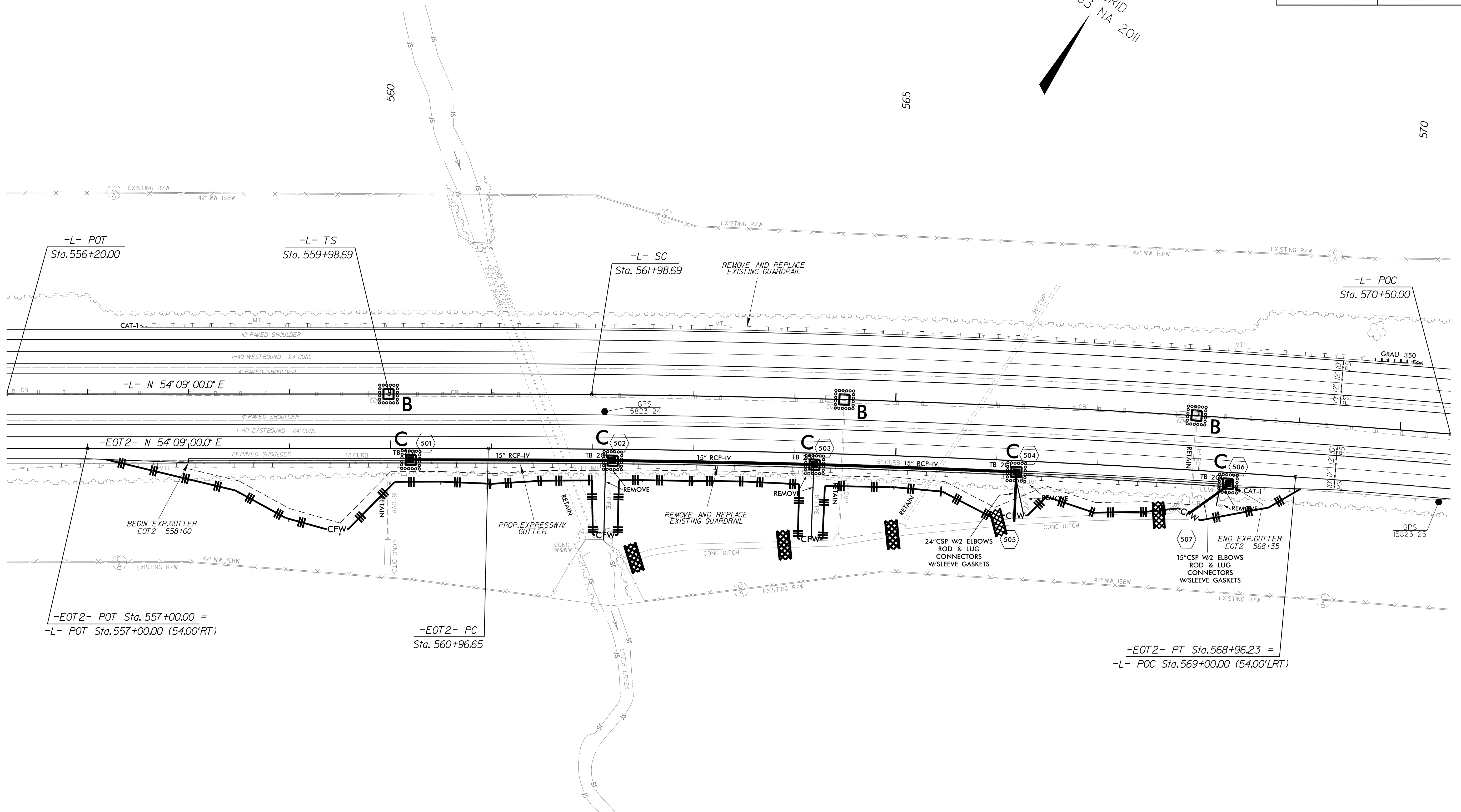
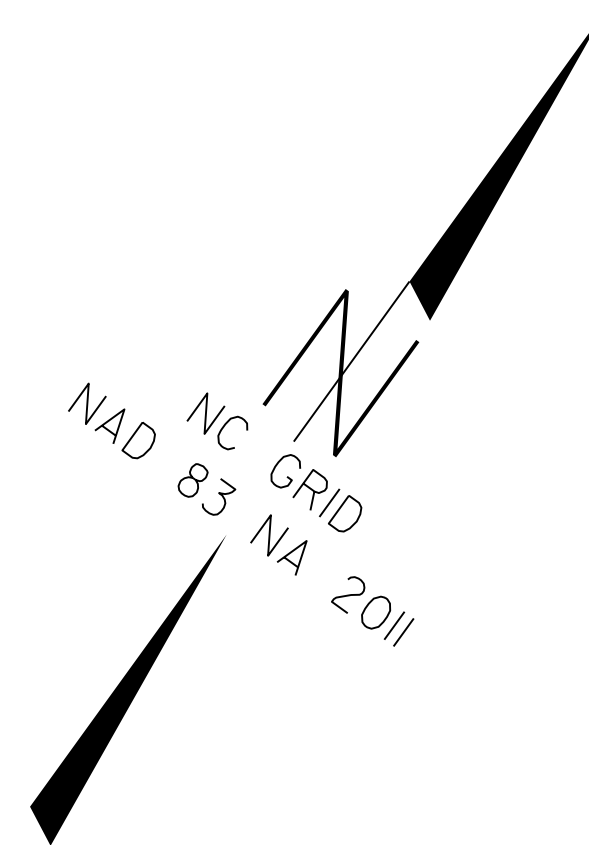


PROJECT REFERENCE NO.	SHEET NO.
1-5823	EC-15
RW SHEET NO.	
ROADWAY DESIGN ENGINEER	HYDRAULICS ENGINEER



-L-		-EOT2-	
PIs Sta 561+32.02	PI Sta = 573+42.47	PI Sta 12+96.60	
$\theta_s = 0^\circ 30' 00.0''$	$\Delta = 11^\circ 24' 00.00''$ (RT)	$\Delta = 4^\circ 01' 00.6''$ (RT)	
Ls = 200.00'	D = 0' 30' 00.00"	D = 0' 30' 08.5"	
LT = 133.33'	L = 2,280.00	L = 799.58'	
ST = 66.67'	T = 1,143.78	T = 399.96'	
	R = 11,459.16	R = 11,405.16'	

FINAL EROSION CONTROL PLAN
FOR CONSTRUCTION SHEET 5

8/17/99
 29 NOV 2016 11:29
 C:\P\Projects\1-5823-40-Davie\ErosionControl\15823.ddc_EC-15.dgn
 \$\$\$\$USERRM\$\$\$\$