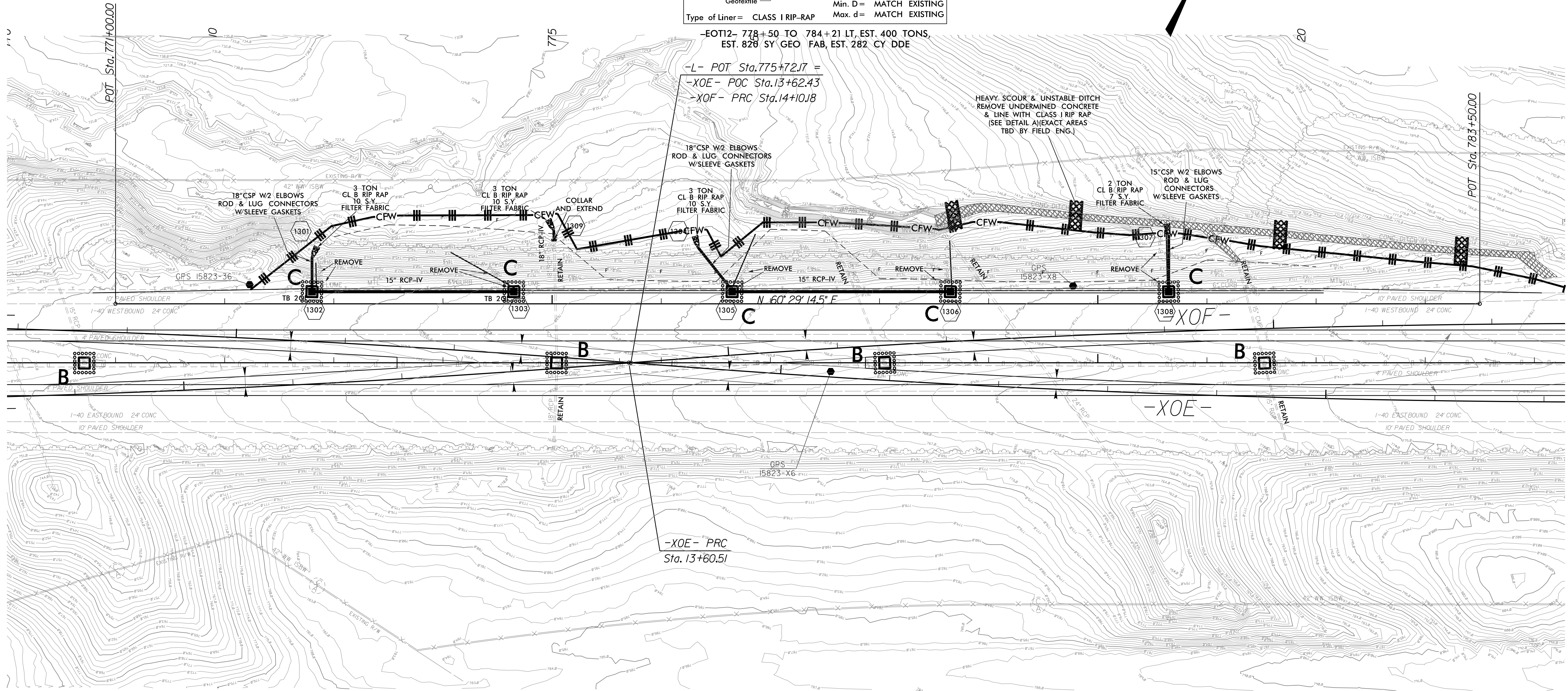
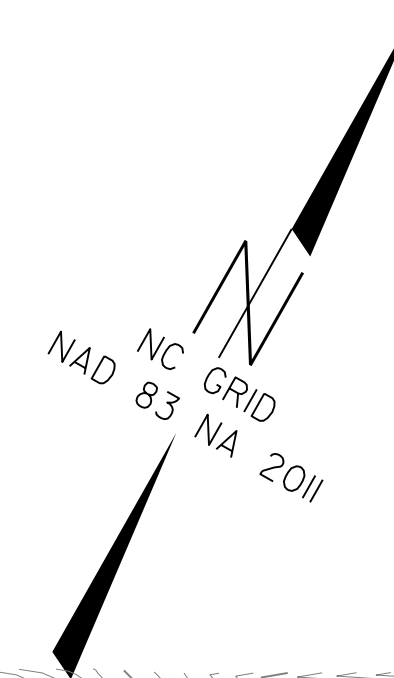
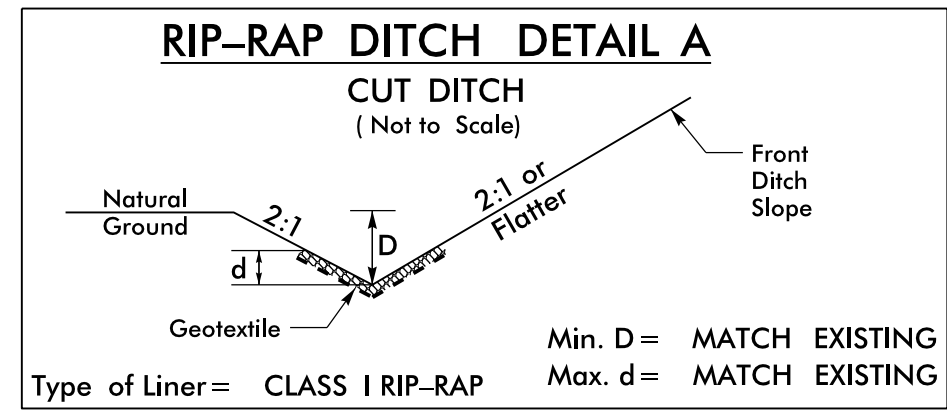


PROJECT REFERENCE NO. 1-5823	SHEET NO. EC-13
RW SHEET NO.	
ROADWAY DESIGN ENGINEER	HYDRAULICS ENGINEER



-EOT12- 778+50 TO 784+21 LT, EST. 400 TONS,
EST. 828 SY GEO FAB, EST. 282 CY DDE

-L- POT Sta. 775+72.17 =
-XOE- POC Sta. 13+62.43
-XOF- PRC Sta. 14+10.18

HEAVY SCOUR & UNSTABLE DITCH
REMOVE UNDERMINED CONCRETE
& LINE WITH CLASS I RIP RAP
(SEE DETAIL AT EXACT AREAS
TBD BY FIELD ENG.)

-XOE- PRC
Sta. 13+60.51

NOTE:
TEMPORARY SILT FENCE SHALL BE INSTALLED A MINIMUM
OF 3 FEET FROM TOE OF FILL IN WETLAND AREAS

CLEARING AND GRUBBING
EROSION CONTROL FOR
CONSTRUCTION SHEET 13

NOTE:
PLACE TEMPORARY ROCK SEDIMENT DAMS TYPE-B AND
TEMPORARY ROCK SILT CHECKS TYPE-A AT DRAINAGE
OUTLETS

29 NOV 2016 11:28
 C:\ProgramData\Development\TIP_Projects\1-5823-40-Davie\ErosionControl\15823.ddc_EC-13.dgn
 \$\$\$\$USERNAME\$\$\$\$