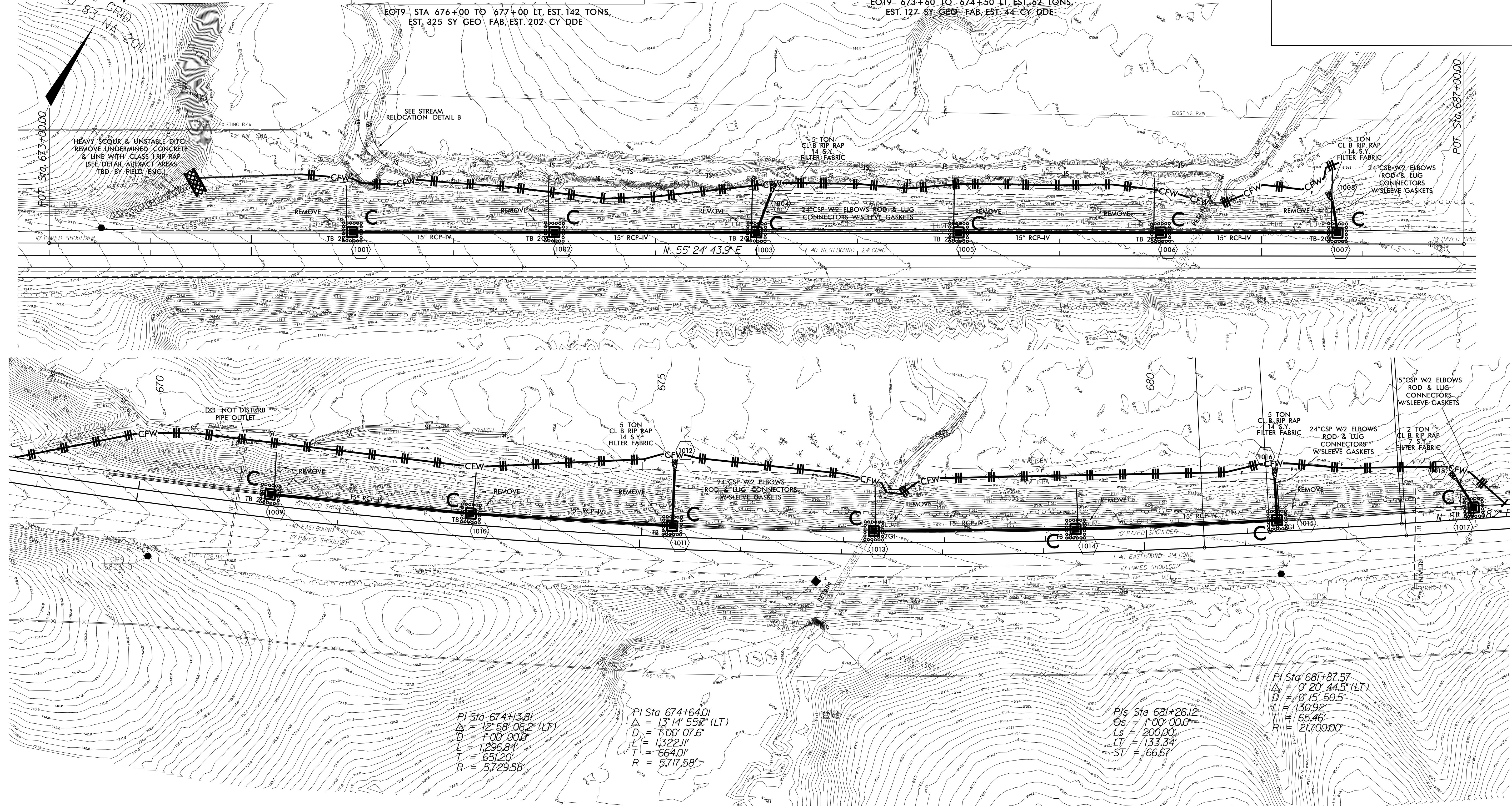
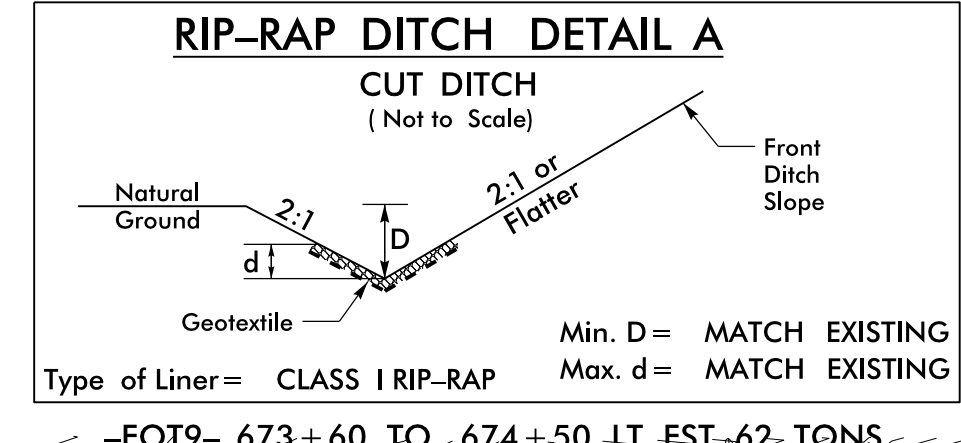
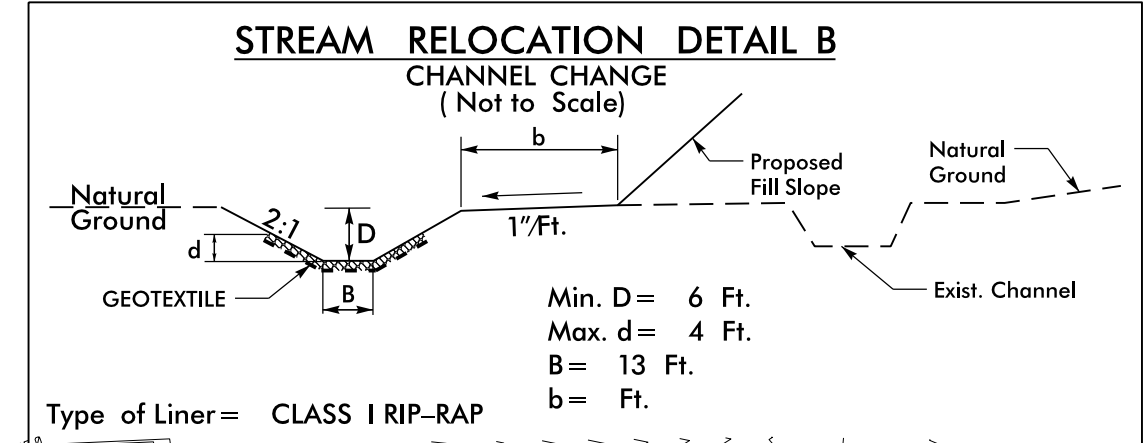


PROJECT REFERENCE NO. 1-5823	SHEET NO. EC-10
RW SHEET NO.	
ROADWAY DESIGN ENGINEER	HYDRAULICS ENGINEER



NOTE:  
TEMPORARY SILT FENCE SHALL BE INSTALLED A MINIMUM OF 3 FEET FROM TOE OF FILL IN WETLAND AREAS

NOTE:  
PLACE TEMPORARY ROCK SEDIMENT DAMS TYPE-B AND TEMPORARY ROCK SILT CHECKS TYPE-A AT DRAINAGE OUTLETS

CLEARING AND GRUBBING EROSION CONTROL FOR CONSTRUCTION SHEET 10

PI Sta 674+13.81  
 $\Delta = 12^{\circ} 58' 06.2''$  (LT)  
 $D = 1^{\circ} 00' 00.0''$   
 $L = 1296.84'$   
 $T = 651.20'$   
 $R = 5,729.58'$

PI Sta 674+64.01  
 $\Delta = 13^{\circ} 14' 55.7''$  (LT)  
 $D = 1^{\circ} 00' 07.6''$   
 $L = 1322.11'$   
 $T = 664.01'$   
 $R = 5,717.58'$

PIs Sta 681+26.12  
 $\Theta_s = 1^{\circ} 00' 00.0''$   
 $L_s = 200.00'$   
 $LT = 133.34'$   
 $ST = 66.67'$

PI Sta 681+87.57  
 $\Delta = 0^{\circ} 20' 44.5''$  (LT)  
 $D = 0^{\circ} 15' 50.5''$   
 $L = 130.92'$   
 $T = 65.46'$   
 $R = 2,700.00'$

30 NOV 2018 15:51  
 C:\p1\placement\IP\_Proj\1-5823-40-Davie\ErosionControl\1-5823.dde EC-10.dgn