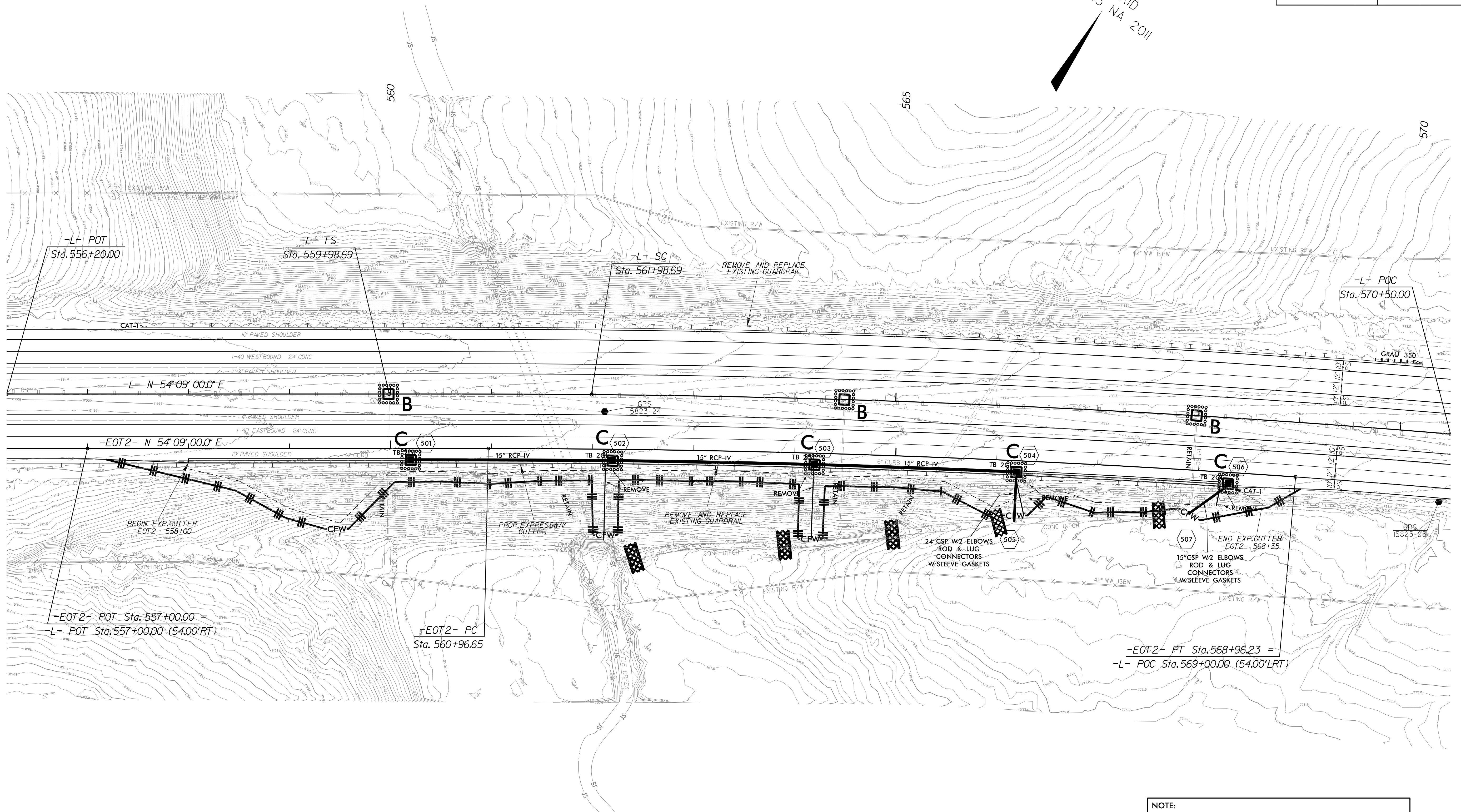
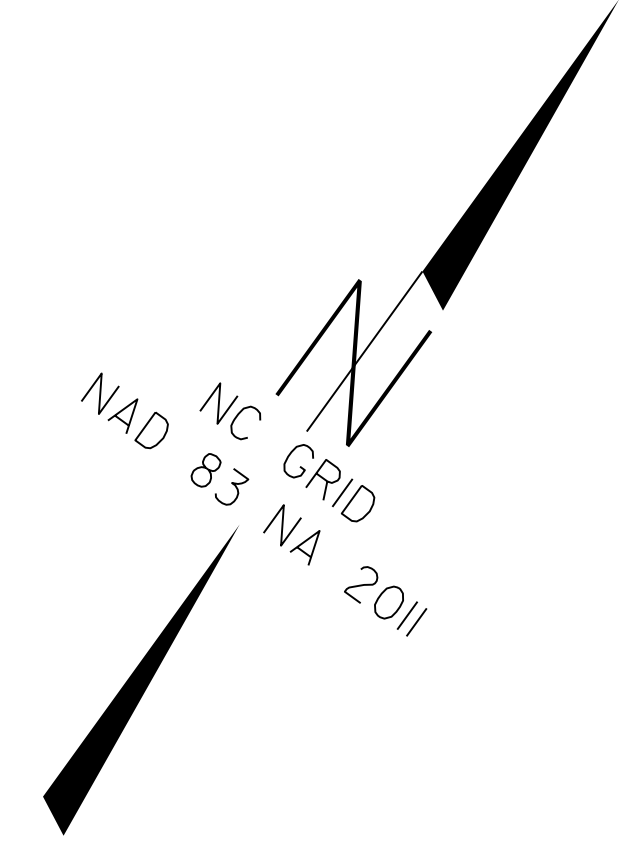


PROJECT REFERENCE NO.	SHEET NO.
1-5823	EC-5
RW SHEET NO.	
ROADWAY DESIGN ENGINEER	HYDRAULICS ENGINEER



<b>-L-</b>		<b>-EOT2-</b>	
PI Sta 561+32.02	PI Sta = 573+42.47	PI Sta 12+96.60	
$\theta_s = 0^\circ 30' 00.0''$	$\Delta = 11^\circ 24' 00.00''$ (RT)	$\Delta = 4^\circ 01' 00.6''$ (RT)	
Ls = 200.00'	D = 0' 30' 00.00"	D = 0' 30' 08.5"	
LT = 133.33'	L = 2,280.00'	L = 799.58'	
ST = 66.67'	T = 1,143.78'	T = 399.96'	
	R = 11,459.16'	R = 11,405.16'	

NOTE:  
TEMPORARY SILT FENCE SHALL BE INSTALLED A MINIMUM OF 3 FEET FROM TOE OF FILL IN WETLAND AREAS

CLEARING AND GRUBBING  
EROSION CONTROL FOR  
CONSTRUCTION SHEET 5

NOTE:  
PLACE TEMPORARY ROCK SEDIMENT DAMS  
TYPE-B AND TEMPORARY ROCK SILT CHECKS  
TYPE-A AT DRAINAGE OUTLETS

8/17/99  
 29 NOV 2016 11:28  
 C:\Program Files\Autodesk\AutoCAD 2016\Projects\1-5823-40-Davie\ErosionControl\15823.ddc\_EC-5.dgn  
 \$\$\$\$USERNAME\$\$\$\$