

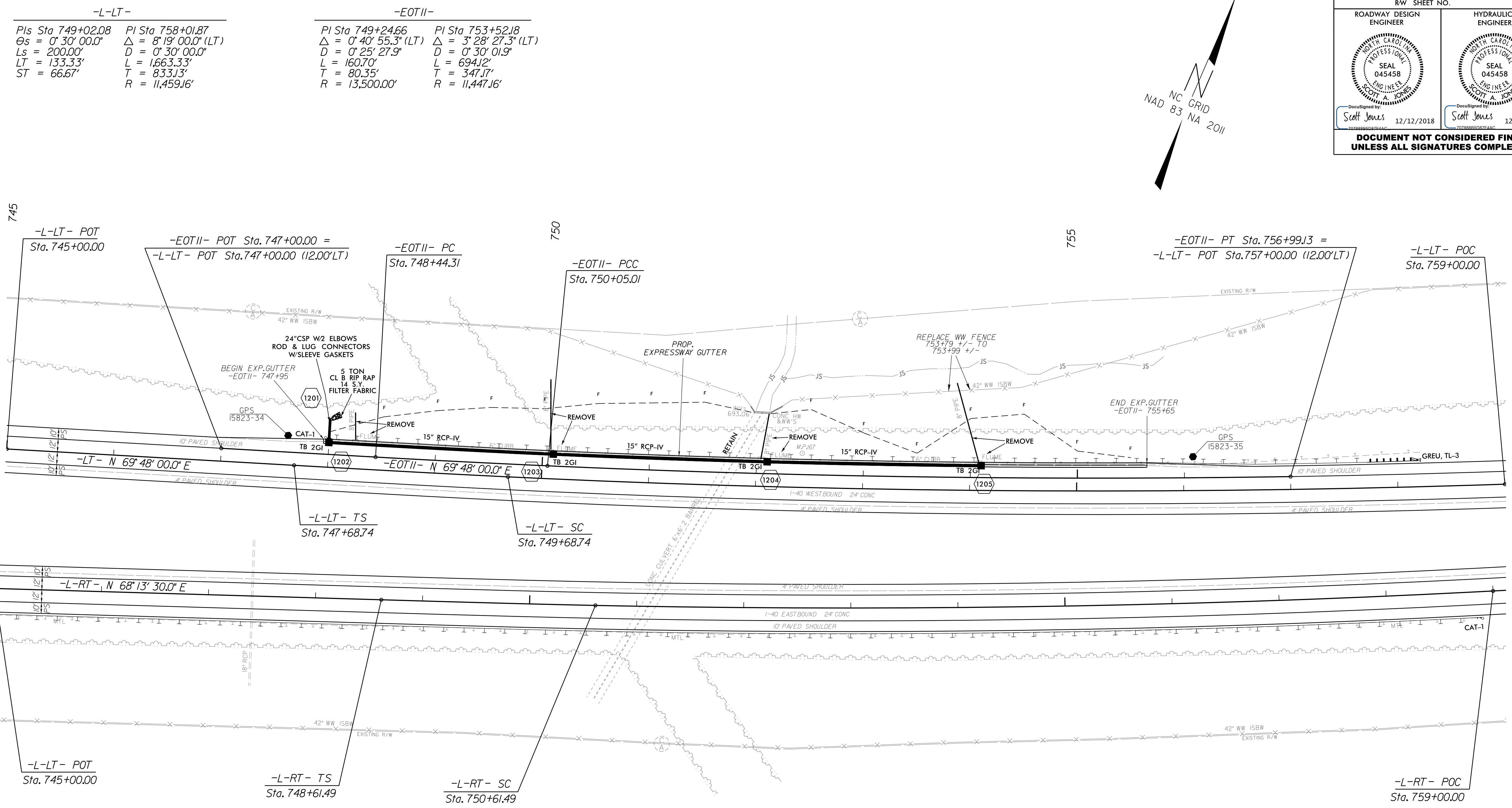
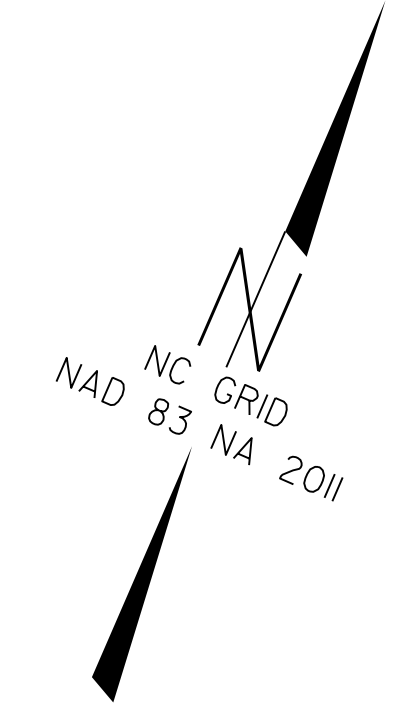


PROJECT REFERENCE NO. 1-5823	SHEET NO. 12
RW SHEET NO.	
ROADWAY DESIGN ENGINEER	HYDRAULICS ENGINEER
 Scott A. Jones 12/12/2018	 Scott A. Jones 12/12/2018
<b>DOCUMENT NOT CONSIDERED FINAL UNLESS ALL SIGNATURES COMPLETED</b>	



**-L-LT-**  
 PIs Sta 749+02.08 PI Sta 758+01.87  
 $\Theta_s = 0^\circ 30' 00.0''$   $\Delta = 8^\circ 19' 00.0''$  (LT)  
 $L_s = 200.00'$   $D = 0^\circ 30' 00.0''$   
 $LT = 133.33'$   $L = 1,663.33'$   
 $ST = 66.67'$   $R = 11,459.16'$

**-EOTII-**  
 PIs Sta 749+24.66 PI Sta 753+52.18  
 $\Delta = 0^\circ 40' 55.3''$  (LT)  $\Delta = 3^\circ 28' 27.3''$  (LT)  
 $D = 0^\circ 25' 27.9''$   $D = 0^\circ 30' 01.9''$   
 $L = 160.70'$   $L = 694.12'$   
 $T = 80.35'$   $T = 347.17'$   
 $R = 13,500.00'$   $R = 11,447.16'$

**-L-RT-**  
 PIs Sta 749+94.82 PI Sta 757+38.10  
 $\Theta_s = 0^\circ 30' 00.0''$   $\Delta = 6^\circ 45' 30.0''$  (LT)  
 $L_s = 200.00'$   $D = 0^\circ 30' 00.0''$   
 $LT = 133.33'$   $L = 1,351.67'$   
 $ST = 66.67'$   $R = 676.62'$   
 $R = 11,459.16'$

NOTE:  
SEE SHEET X-57 TO X-63  
FOR CROSS SECTIONS

12-DEC-2018 14:25  
 C:\Users\scottj\Documents\TIP\_Projects\1-5823-40-Davie\Roadway\DesignFiles\5823\_ddd\_psh12.dgn