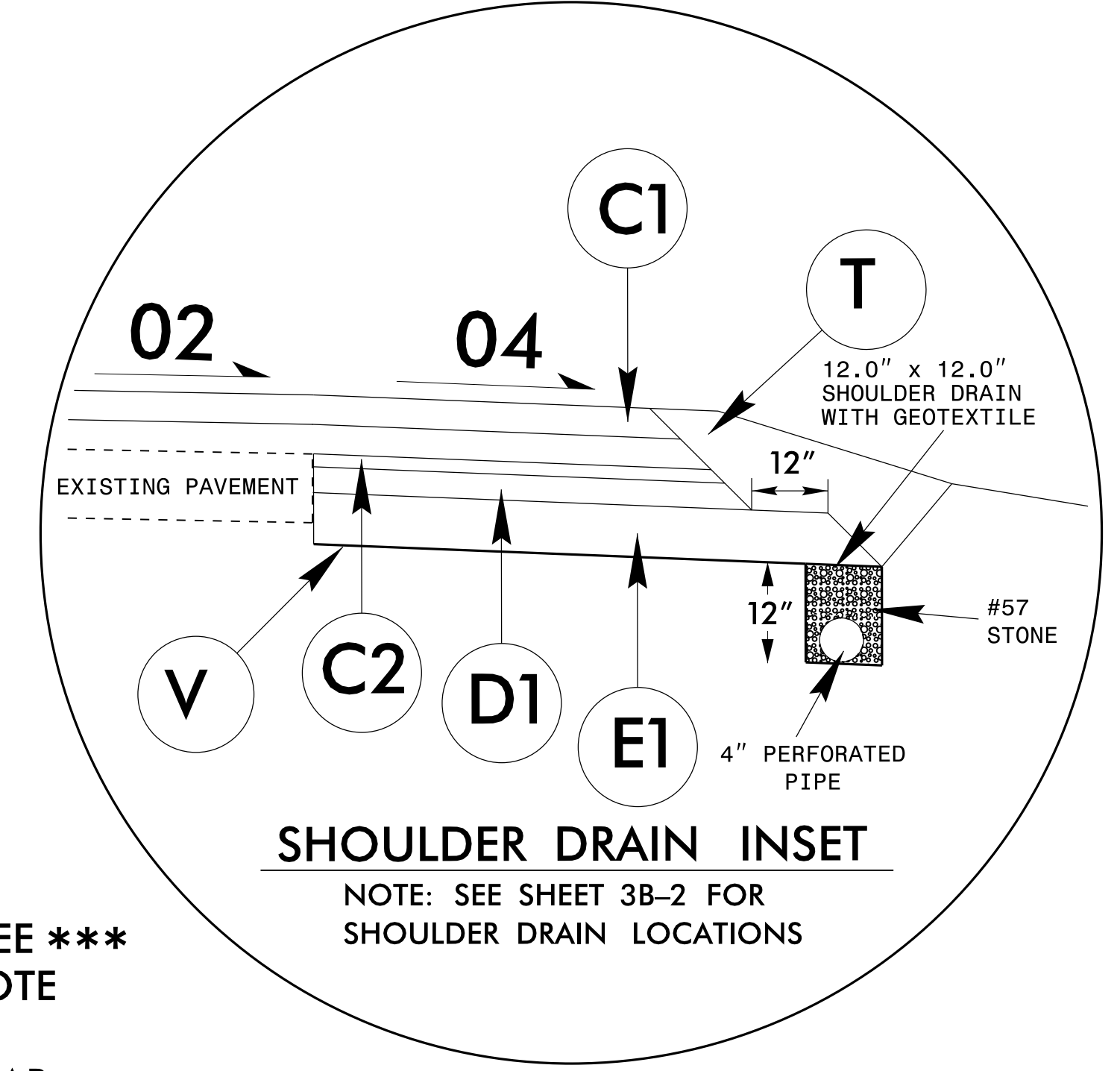
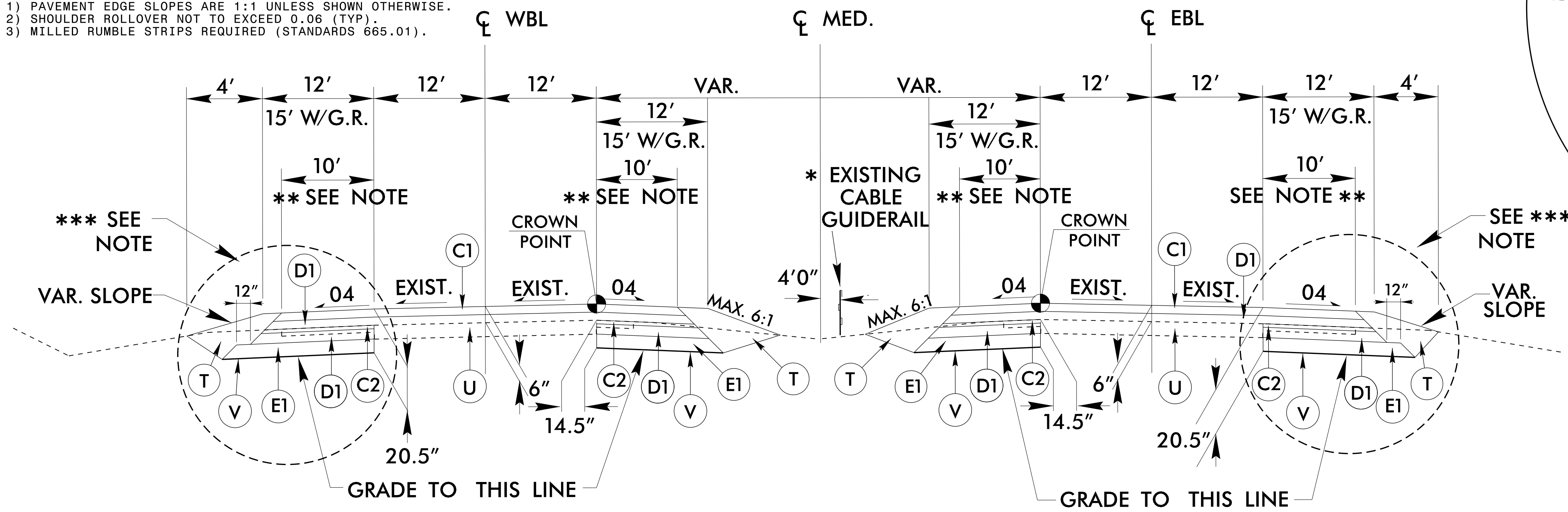


5/14/99  
 P:\Projects\2018\12-DEC-2018\12-140-Davie\Roadway\Design\Files\15823.ddc\2A-1-1.tpd.dgn  
 \$\$\$\$\$\$

## PAVEMENT SCHEDULE

C1	PROP. APPROX. 3" ASPHALT CONCRETE SURFACE COURSE TYPE S9.5D, AT AN AVERAGE RATE OF 168 LBS. PER SQ. YD. IN EACH OF TWO LAYERS.	E3	PROP. APPROX. 7" ASPHALT CONCRETE BASE COURSE, TYPE B25.0C, AT AN AVERAGE RATE OF 399 LBS. PER SQ. YD. IN EACH OF TWO LAYERS.	V	GEOTEXTILE FOR SOIL STABILIZATION
C2	PROP. APPROX. 1 1/2" ASPHALT CONCRETE SURFACE COURSE, TYPE S9.5C, AT AN AVERAGE RATE OF 168 LBS. PER SQ. YD.	R	SHOULDER BERM GUTTER		
C3	PROP. VAR. DEPTH ASPHALT CONCRETE SURFACE COURSE, TYPE S9.5C, AT AN AVERAGE RATE OF 112 LBS. PER SQ. YD. PER 1" DEPTH, TO BE PLACED IN LAYERS NOT LESS THAN 1 1/2" IN DEPTH OR GREATER THAN 2" IN DEPTH.	R1	REPAIR OF CONTINUOUSLY REINFORCED CONCRETE PAVEMENT (SEE SPECIAL DETAIL 2C-1)		
D1	PROP. APPROX. 3" ASPHALT CONCRETE INTERMEDIATE COURSE, TYPE I19.0C, AT AN AVERAGE RATE OF 342 LBS. PER SQ. YD.	R2	10" CONCRETE SLEEPER SLAB (SEE DETAIL SHEET 2C-3)		
D2	PROP. VAR. DEPTH ASPHALT CONCRETE INTERMEDIATE COURSE, TYPE I19.0C, AT AN AVERAGE RATE OF 114 LBS. PER SQ. YD. PER 1" DEPTH, TO BE PLACED IN LAYERS NOT LESS THAN 2.5" IN DEPTH OR GREATER THAN 4" IN DEPTH.	R3	EXPRESSWAY GUTTER		
E1	PROP. APPROX. 10" ASPHALT CONCRETE BASE COURSE, TYPE B25.0C, AT AN AVERAGE RATE OF 570 LBS. PER SQ. YD. IN EACH OF TWO LAYERS.	T	EARTH MATERIAL.		
E2	PROP. VAR. DEPTH ASPHALT CONCRETE BASE COURSE, TYPE B25.0C, AT AN AVERAGE RATE OF 114 LBS. PER SQ. YD. PER 1" DEPTH, TO BE PLACED IN LAYERS NOT LESS THAN 3" IN DEPTH OR GREATER THAN 5 1/2" IN DEPTH.	U	EXISTING PAVEMENT.		

NOTES:  
 1) PAVEMENT EDGE SLOPES ARE 1:1 UNLESS SHOWN OTHERWISE.  
 2) SHOULDER ROLLOVER NOT TO EXCEED 0.06 (TYP).  
 3) MILLED RUMBLE STRIPS REQUIRED (STANDARDS 665.01).



### USE TYPICAL SECTION NO. 1

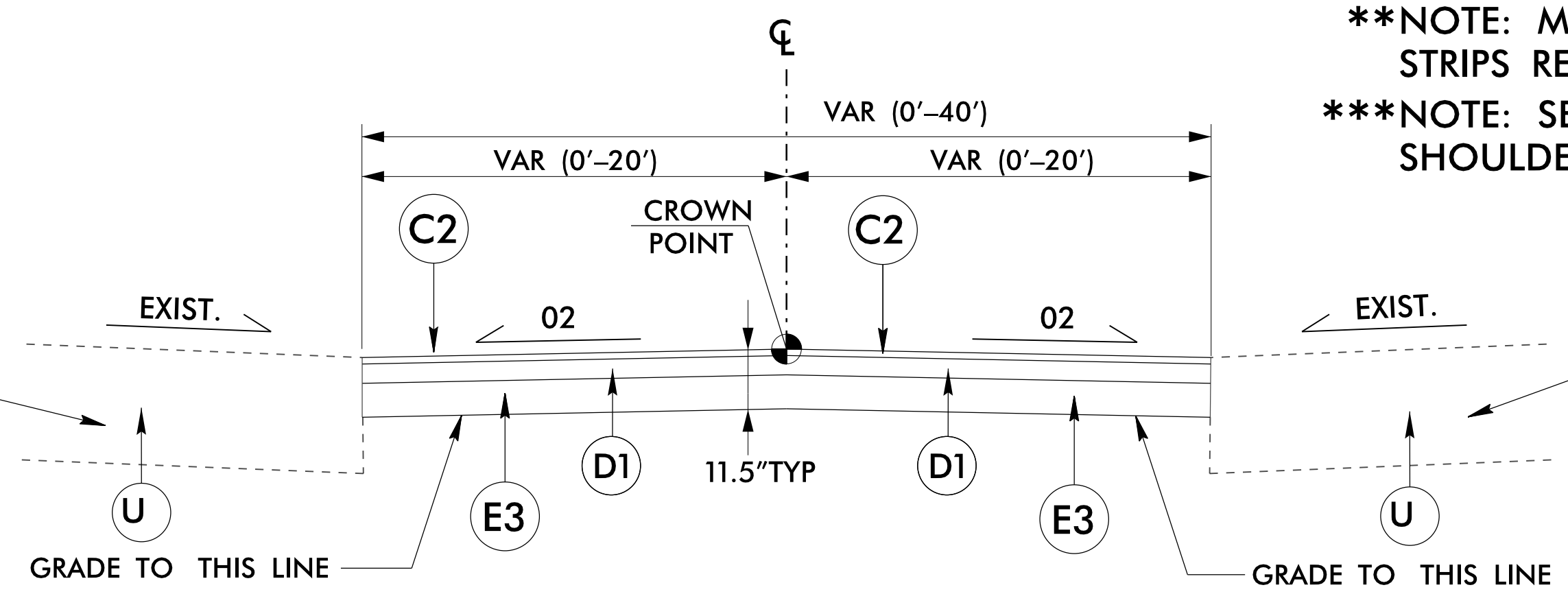
- L- STA. 519+00 TO 642+41.99 (+/-)
- L- STA. 768+62.94 TO 865+00 (+/-)
- LEFT SIDE ONLY:
- L-LT- STA. 642+41.99 TO 700+65.00 (+/-)
- L-LT- STA. 703+05.00 TO 768+32.08 (+/-)
- RIGHT SIDE ONLY:
- L- STA. 642+41.99 TO 665+62.61 (+/-)
- RIGHT SIDE ONLY:
- L-RT- STA. 665+62.61 TO 701+62.00 (+/-)
- L-RT- STA. 704+02.01 TO 768+53.61 (+/-)

\* NOTE: DO NOT DISTURB EXISTING CABLE GUIDERAIL  
 \*\*NOTE: MILLED RUMBLE STRIPS REQUIRED (STD. 665.01)  
 \*\*\*NOTE: SEE SHEET 3B-2 FOR SHOULDER DRAIN LOCATIONS

### USE CROSSOVER TYPICAL SECTION

- XOVER-A- 5+00 TO 22+99.91 (+/-)
- XOVER-B- 5+00 TO 23+00.88 (+/-)
- XOVER-C- 5+00 TO 23+20.37 (+/-)
- XOVER-D- 5+00 TO 23+20.37 (+/-)
- XOVER-E- 5+00 TO 22+72.61 (+/-)
- XOVER-F- 5+00 TO 23+20.37 (+/-)
- XOVER-G- 5+00 TO 23+20.37 (+/-)
- XOVER-H- 5+00 TO 23+20.37 (+/-)

10' FDPS TO BE CONSTRUCTED AS SHOWN IN TYPICAL NO. 1



10' FDPS TO BE CONSTRUCTED AS SHOWN IN TYPICAL NO. 1