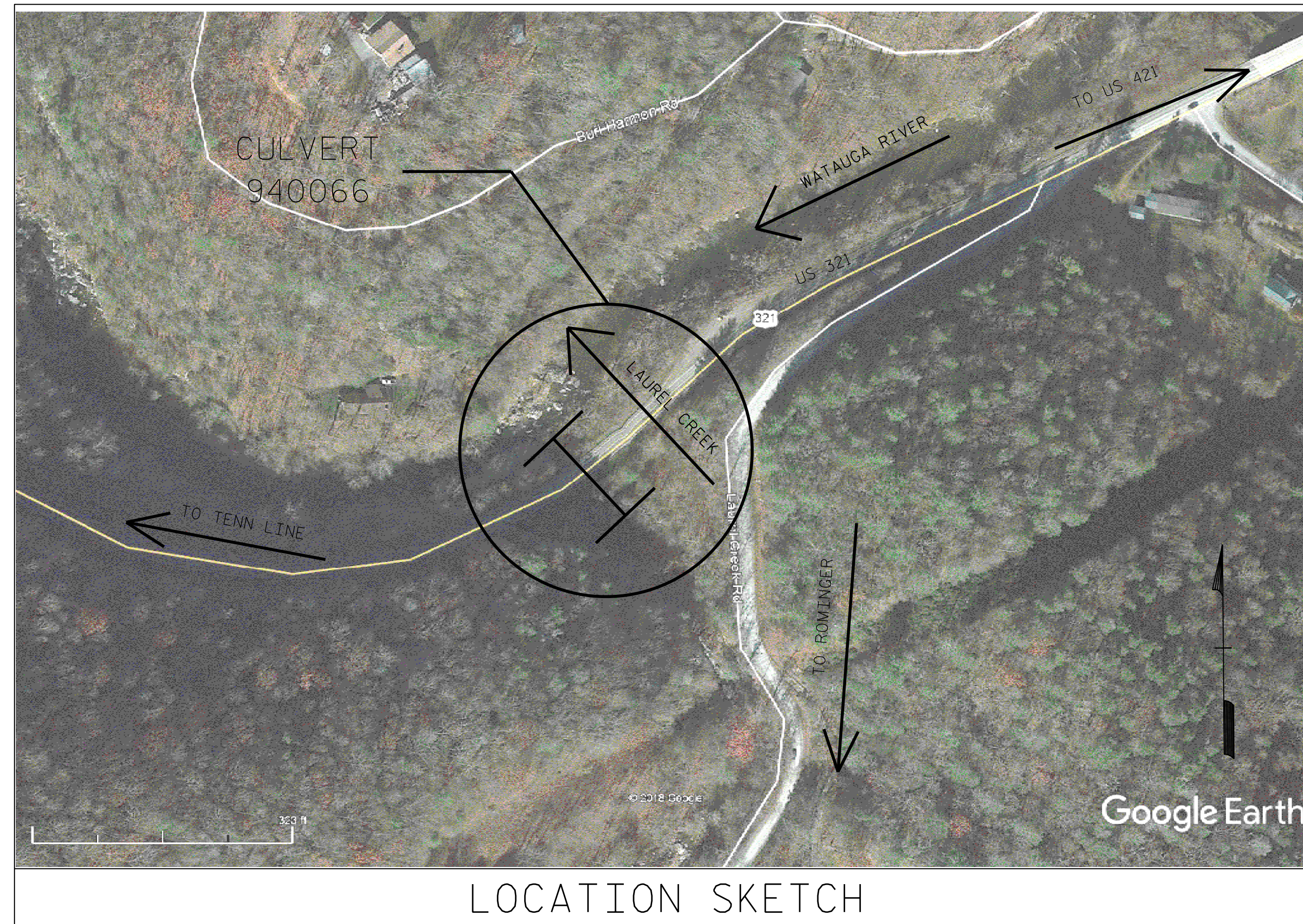


GENERAL NOTES:

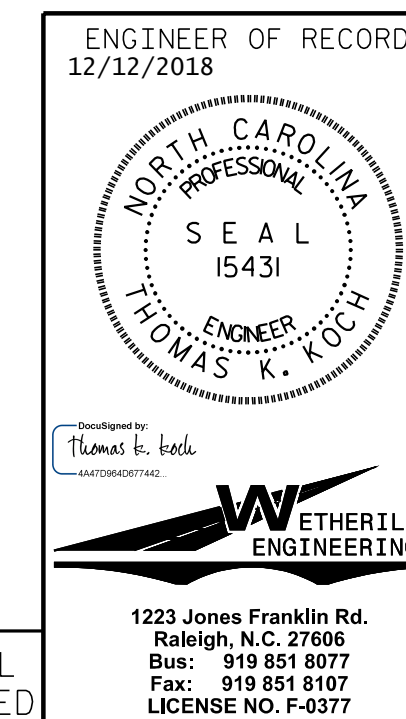
1. INFORMATION INDICATED ON THE LOCATION SKETCH SHALL BE CONSIDERED GENERAL INFORMATION ONLY. CONTRACTOR SHALL CONFIRM, THROUGH OTHER SOURCES, SPECIFIC INFORMATION REGARDING THE BRIDGES, ROADWAYS, UTILITIES, THE SURROUNDING AREA, AND ANY OTHER ASPECTS THAT MAY BE NECESSARY TO PERFORM AND COMPLETE THE PROJECT.
2. REPAIR LOCATIONS AND ESTIMATE OF QUANTITIES ARE GIVEN WITH THE BEST INFORMATION AVAILABLE. IF ADDITIONAL REPAIRS NOT SHOWN ON THE DRAWINGS ARE DEEMED NECESSARY BY THE ENGINEER, THE ENGINEER SHALL NOTE ON THE DRAWINGS THE APPROXIMATE LOCATION AND DESCRIPTION OF THE REPAIRS AND ADJUST THE ACTUAL QUANTITIES ENTERED INTO THE REPAIR QUANTITY TABLE.
3. EXISTING DIMENSIONS AND CULVERT CONDITION ARE FROM THE BEST INFORMATION AVAILABLE. THE CONTRACTOR SHALL FIELD VERIFY THE INFORMATION SHOWN ON THE PLANS AND NOTIFY THE ENGINEER IF ACTUAL DIMENSIONS AND CONDITIONS DIFFER.
4. IT IS THE CONTRACTOR'S RESPONSIBILITY TO FOLLOW ALL STATE AND FEDERAL SAFETY REQUIREMENTS.
5. FOR SUBMITTAL OF WORKING DRAWINGS, SEE SPECIAL PROVISIONS.
6. FOR FALSEWORK AND FORMWORK, SEE SPECIAL PROVISIONS.
7. FOR EPOXY RESIN INJECTION, SEE SPECIAL PROVISIONS.
8. FOR SHOTCRETE REPAIRS, SEE SPECIAL PROVISIONS.
9. FOR CONCRETE REPAIRS, SEE SPECIAL PROVISIONS.
10. FOR CRANE SAFETY, SEE SPECIAL PROVISIONS.
11. FOR GROUT FOR STRUCTURES, SEE SPECIAL PROVISIONS.
12. WORK ON CULVERT SHALL BE PERFORMED SO AS NOT TO ALLOW DEBRIS TO FALL INTO THE WATER. THE CONTRACTOR SHALL SUBMIT PLANS FOR CONSTRUCTION IN ACCORDANCE WITH ARTICLE 402-2 OF THE STANDARD SPECIFICATIONS.
13. PRIOR TO BEGINNING WORK, CONTRACTOR SHALL SUBMIT FOR REVIEW AND APPROVAL A COMPLETE SEQUENCE OF TASKS FOR EACH OPERATION AFFECTING THE ROADWAY SURFACE AND/OR TRAFFIC.
14. ANY DAMAGE TO EXISTING REINFORCING STEEL, DURING CONTRACTOR'S OPERATIONS, SHALL BE REPAIRED AS DIRECTED BY THE ENGINEER AND PERFORMED AT NO ADDITIONAL COST.



LOCATION SKETCH

TOTAL BILL OF MATERIAL			
CULVERT NO. 940066	SHOTCRETE REPAIRS	CONCRETE REPAIRS	EPOXY RESIN INJECTION
	CU. FT.	CU. FT.	LIN. FT.
TOTALS	125.4	41.8	37.0

PROJECT NO. 15BPR.32
WATAUGA COUNTY
 STRUCTURE: 940066
 SHEET 2 OF 7



STATE OF NORTH CAROLINA
 DEPARTMENT OF TRANSPORTATION
 RALEIGH
GENERAL NOTES
 30' x 19' REINFORCED
 CONCRETE ARCH
 CULVERT ON US 321
 OVER LAUREL CREEK

REVISIONS						SHEET NO.
NO.	BY:	DATE:	NO.	BY:	DATE:	S-17
1			3			TOTAL SHEETS
2			4			23

DOCUMENT NOT CONSIDERED FINAL
 UNLESS ALL SIGNATURES COMPLETED

DRAWN BY : A. KLINK DATE : 07/18
 CHECKED BY : T. KOCH DATE : 08/18

P:\2018\18153.22_15BPR.32_MCDOT_Culvert Preservation\DC\WAT AUGA 940066\Watauga 66 Culvert Plan.dgn
 12/12/2018 2:15:21 PM