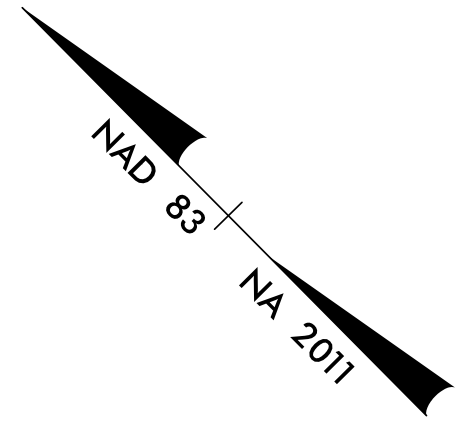
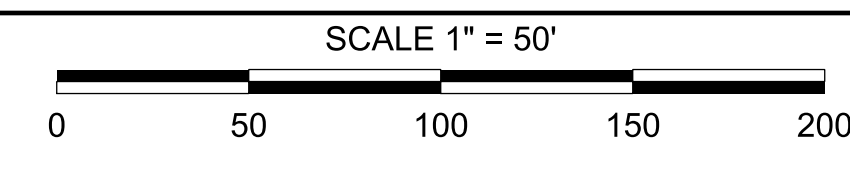


5/14/19



PROJECT REFERENCE NO. U-5840	SHEET NO. UC-6
DESIGNED BY: CTH	
DRAWN BY: CTH	
CHECKED BY: ASV	
APPROVED BY: XMD	
REVISED:	
NORTH CAROLINA DEPARTMENT OF TRANSPORTATION	
UTILITIES ENGINEERING SEC. PHONE: (919) 707-6690 FAX: (919) 250-4151	UTILITY CONSTRUCTION PLANS ONLY

UTILITY CONSTRUCTION

STV 100 Years
 STV Engineers, Inc.
 900 West Trade St., Suite 715
 Charlotte, NC 28202
 NC License Number F-0991

DOCUMENT NOT CONSIDERED FINAL UNLESS ALL SIGNATURES COMPLETED

TIE-IN TO EXIST. 6" WATER LINE
 W/ LONG PATTERN SLEEVE &
 CONCRETE THRUST BLOCK

8"X6" REDUCER
 2 - 45° BEND

94 LF 8" WATER LINE
 (RESTRAINED JOINT DIP PC350)

10"X10"X6" FH TEE

ABANDON 1042 LF OF 10" UTILITY PIPE
 (1982 LF TOTAL)

60 LF DIP RESTRAINED JOINT PIPE
 -WL2- STA. 14+94 TO STA. 15+54

2 - 22.5° BEND
 -WL2- STA. 15+13.86
 -WL2- STA. 15+34.89

DEFLECTION
 BEGIN STA: 12+68.69
 END STA: 12+81.24
 BEND RADIUS: 916'

ADJUSTMENT OF MANHOLE

-WL2- STA. 10+00.00
 TIE-IN TO EXIST. 10" WATER LINE
 W/ LONG PATTERN SLEEVE &
 CONCRETE THRUST BLOCK

-L- STA. 39+60.38 RT 31.88'

REMOVE VALVE BOX

ABANDON 70 LF OF
 6" UTILITY PIPE

36 LF FIRE HYDRANT LEG

6" VALVE

FIRE HYDRANT

DEFLECTION
 BEGIN STA: 19+88.61
 BEND RADIUS: 5020.3'

DEFLECTION
 BEGIN STA: 19+66.23
 END STA: 19+88.61
 BEND RADIUS: 458.4'

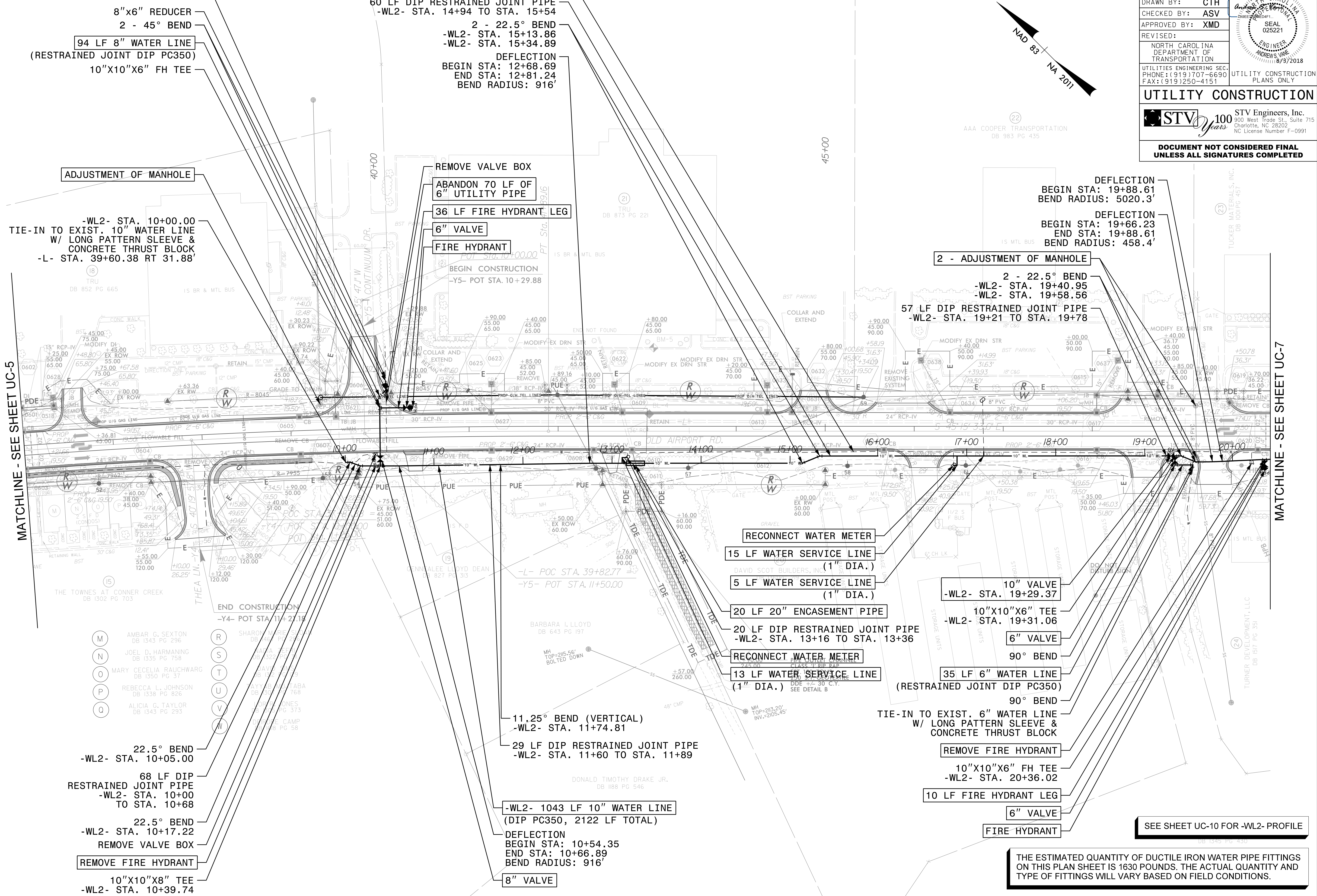
2 - ADJUSTMENT OF MANHOLE

2 - 22.5° BEND
 -WL2- STA. 19+40.95
 -WL2- STA. 19+58.56

57 LF DIP RESTRAINED JOINT PIPE
 -WL2- STA. 19+21 TO STA. 19+78

MATCHLINE - SEE SHEET UC-5

MATCHLINE - SEE SHEET UC-7



- | | | | |
|-----|---|-----|-----------------------------------|
| (M) | AMBAR G. SEXTON
DB 1343 PG 296 | (R) | SHARON MURPHY
DB 1343 PG 296 |
| (N) | JOEL D. HARMANING
DB 1335 PG 758 | (S) | DAVID M. HARRIS
DB 1343 PG 296 |
| (O) | MARY CECELIA RAUCHWARC
DB 1350 PG 37 | (T) | DAVID M. HARRIS
DB 1343 PG 296 |
| (P) | REBECCA L. JOHNSON
DB 1338 PG 826 | (U) | DAVID M. HARRIS
DB 1343 PG 296 |
| (Q) | ALICIA G. TAYLOR
DB 1343 PG 293 | (V) | DAVID M. HARRIS
DB 1343 PG 296 |
| | | (W) | DAVID M. HARRIS
DB 1343 PG 296 |

22.5° BEND
 -WL2- STA. 10+05.00

68 LF DIP
 RESTRAINED JOINT PIPE
 -WL2- STA. 10+00
 TO STA. 10+68

22.5° BEND
 -WL2- STA. 10+17.22

REMOVE VALVE BOX

REMOVE FIRE HYDRANT

10"X10"X8" TEE
 -WL2- STA. 10+39.74

-L- POC STA. 39+82.77
 -Y5- POT STA. 11+50.00

11.25° BEND (VERTICAL)
 -WL2- STA. 11+74.81

29 LF DIP RESTRAINED JOINT PIPE
 -WL2- STA. 11+60 TO STA. 11+89

-WL2- 1043 LF 10" WATER LINE
 (DIP PC350, 2122 LF TOTAL)

DEFLECTION
 BEGIN STA: 10+54.35
 END STA: 10+66.89
 BEND RADIUS: 916'

8" VALVE

RECONNECT WATER METER

15 LF WATER SERVICE LINE (1" DIA.)

5 LF WATER SERVICE LINE (1" DIA.)

20 LF 20" ENCASEMENT PIPE

20 LF DIP RESTRAINED JOINT PIPE
 -WL2- STA. 13+16 TO STA. 13+36

RECONNECT WATER METER

13 LF WATER SERVICE LINE (1" DIA.)

10" VALVE
 -WL2- STA. 19+29.37

10"X10"X6" TEE
 -WL2- STA. 19+31.06

6" VALVE

90° BEND

35 LF 6" WATER LINE
 (RESTRAINED JOINT DIP PC350)

90° BEND

TIE-IN TO EXIST. 6" WATER LINE
 W/ LONG PATTERN SLEEVE &
 CONCRETE THRUST BLOCK

REMOVE FIRE HYDRANT

10"X10"X6" FH TEE
 -WL2- STA. 20+36.02

10 LF FIRE HYDRANT LEG

6" VALVE

FIRE HYDRANT

SEE SHEET UC-10 FOR -WL2- PROFILE

THE ESTIMATED QUANTITY OF DUCTILE IRON WATER PIPE FITTINGS ON THIS PLAN SHEET IS 1630 POUNDS. THE ACTUAL QUANTITY AND TYPE OF FITTINGS WILL VARY BASED ON FIELD CONDITIONS.

5/14/2018 P:\Utilities\Water and Sewer\Sheet Files\U-5840\WS_UC6.dgn