

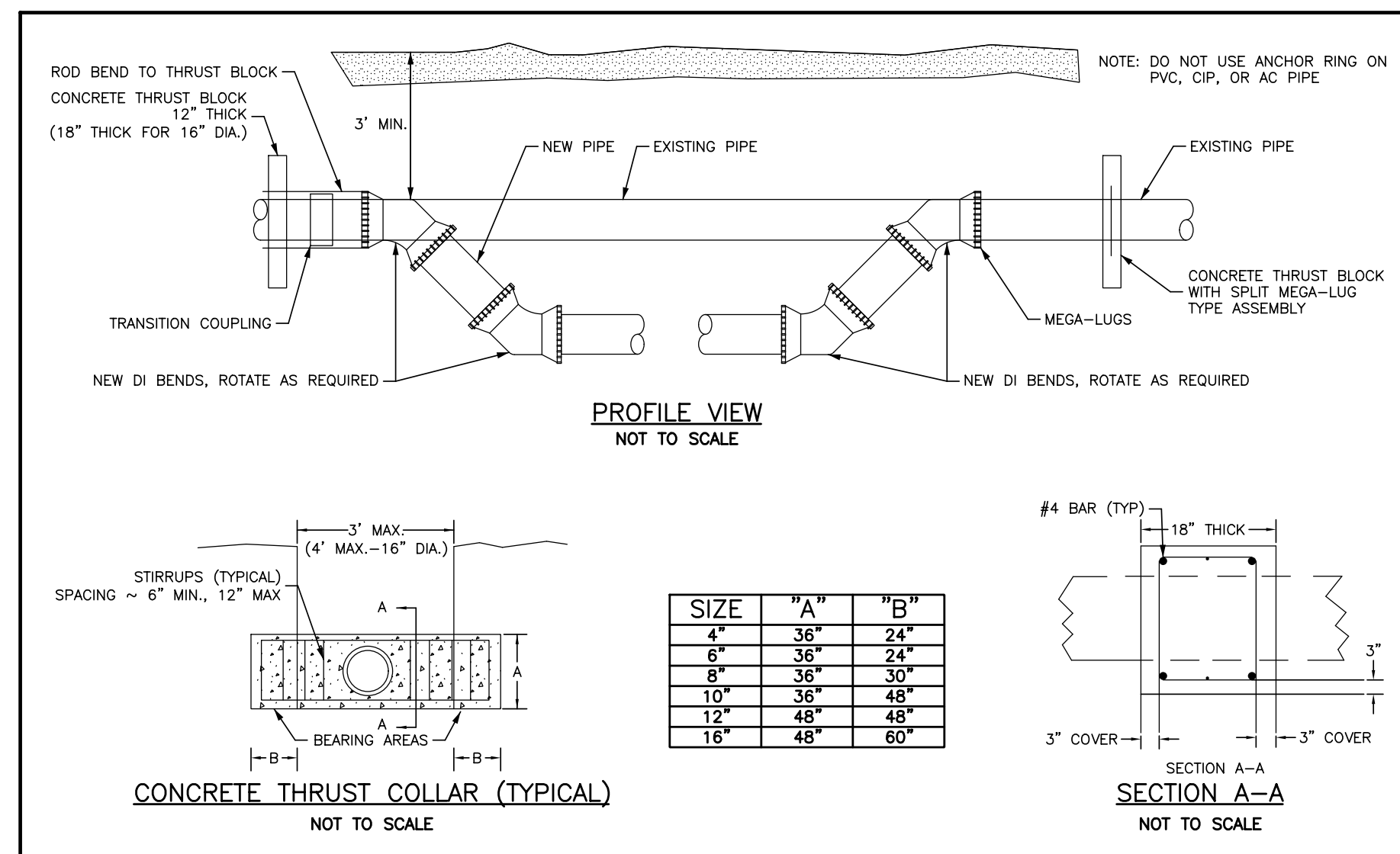
PROJECT REFERENCE NO. U-5840	SHEET NO. UC-3A
DESIGNED BY: CTH	
DRAWN BY: CTH	
CHECKED BY: ASV	
APPROVED BY: XMD	
REVISED:	
NORTH CAROLINA DEPARTMENT OF TRANSPORTATION	
UTILITIES ENGINEERING SEC. PHONE: (919) 707-6690 FAX: (919) 250-4151	UTILITY CONSTRUCTION PLANS ONLY

UTILITY CONSTRUCTION

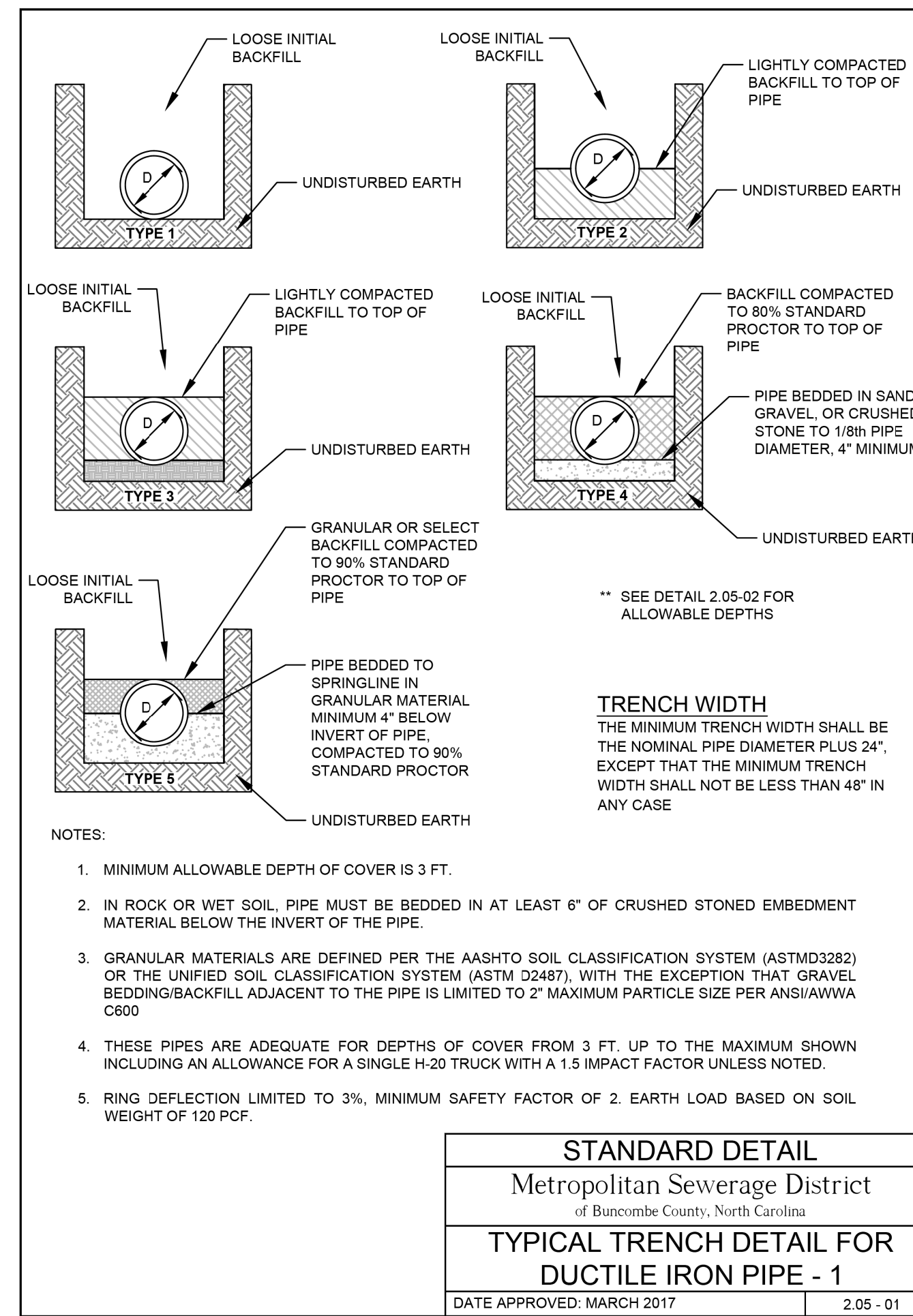
STV 100 Years
 STV Engineers, Inc.
 900 West Trade St., Suite 715
 Charlotte, NC 28202
 NC License Number F-0991

DOCUMENT NOT CONSIDERED FINAL UNLESS ALL SIGNATURES COMPLETED

PROJECT TYPICAL DETAILS



OWNER TYPICAL DETAILS



Maximum Depth of Cover for Ductile Iron Pipe w/ Cement Lining						
Pipe Size	Class	Type 1	Type 2	Type 3	Type 4	Type 5
4	350	53	61	69	85	100
6	350	26	31	37	47	65
8	350	16	20	25	34	50
10	350	11	15	19	28	45
12	350	10	15	19	28	44
14	250	-	11	15	23	36
14	300	-	13	17	26	42
14	350	-	14	19	27	44
16	250	-	11	15	24	34
16	300	-	13	17	26	39
16	350	-	15	20	28	44
18	250	-	10	14	22	31
18	300	-	13	17	26	36
18	350	-	15	19	28	41
20	250	-	10	14	22	30
20	300	-	13	17	26	35
20	350	-	15	19	28	38
24	200	-	8	12	17	25
24	250	-	11	15	20	29
24	300	-	13	17	24	32
24	350	-	15	19	28	37
30	200	-	8	12	16	24
24	250	-	11	15	19	27
30	300	-	12	16	21	29
30	350	-	15	19	25	33
36	200	-	8	12	15	23
36	250	-	10	14	18	25
36	300	-	12	16	20	28
36	350	-	15	19	24	32
42	200	-	8	12	15	22
42	250	-	10	14	17	25
42	300	-	12	16	20	27
42	350	-	15	19	23	32
48	200	-	8	11	15	22
48	250	-	10	13	17	24
48	300	-	12	15	19	27
48	350	-	15	18	22	30
54	200	-	8	11	14	22
54	250	-	10	13	16	24
54	300	-	13	15	19	27
54	350	-	15	18	22	30
60	200	-	8	11	14	22
60	250	-	10	13	16	24
60	300	-	13	15	19	26
60	350	-	15	18	22	30
64	200	-	8	11	14	21
64	250	-	10	13	16	24
64	300	-	12	15	19	26
64	350	-	15	17	21	29

SOURCE: Ductile Iron Pipe for Wastewater Applications, DIPRA 2006

STANDARD DETAIL
 Metropolitan Sewerage District
 of Buncombe County, North Carolina
TYPICAL TRENCH DETAIL FOR DUCTILE IRON PIPE - 2
 DATE APPROVED: MARCH 2017 | 2.05 - 02

STANDARD DETAIL
 Metropolitan Sewerage District
 of Buncombe County, North Carolina
TYPICAL TRENCH DETAIL FOR DUCTILE IRON PIPE - 1
 DATE APPROVED: MARCH 2017 | 2.05 - 01