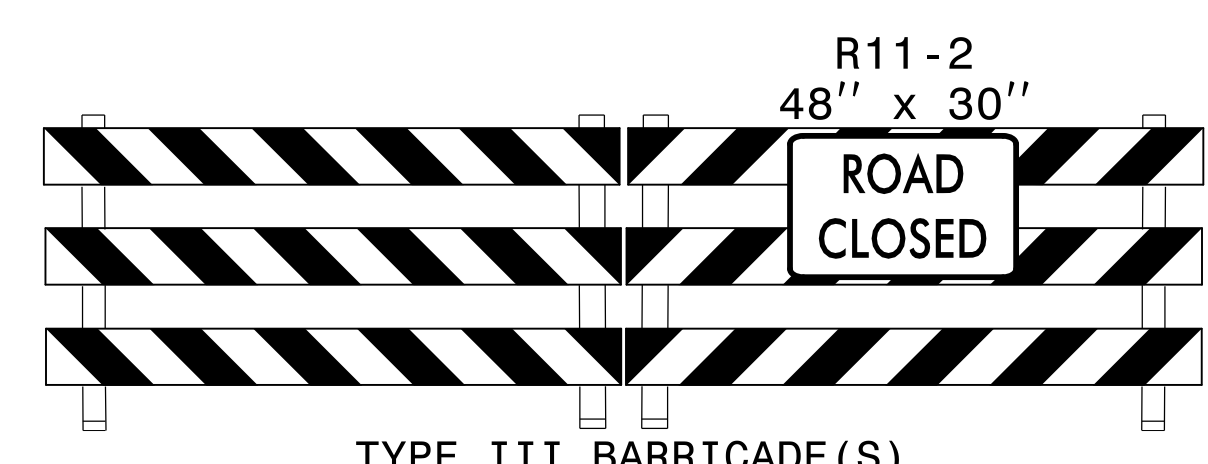
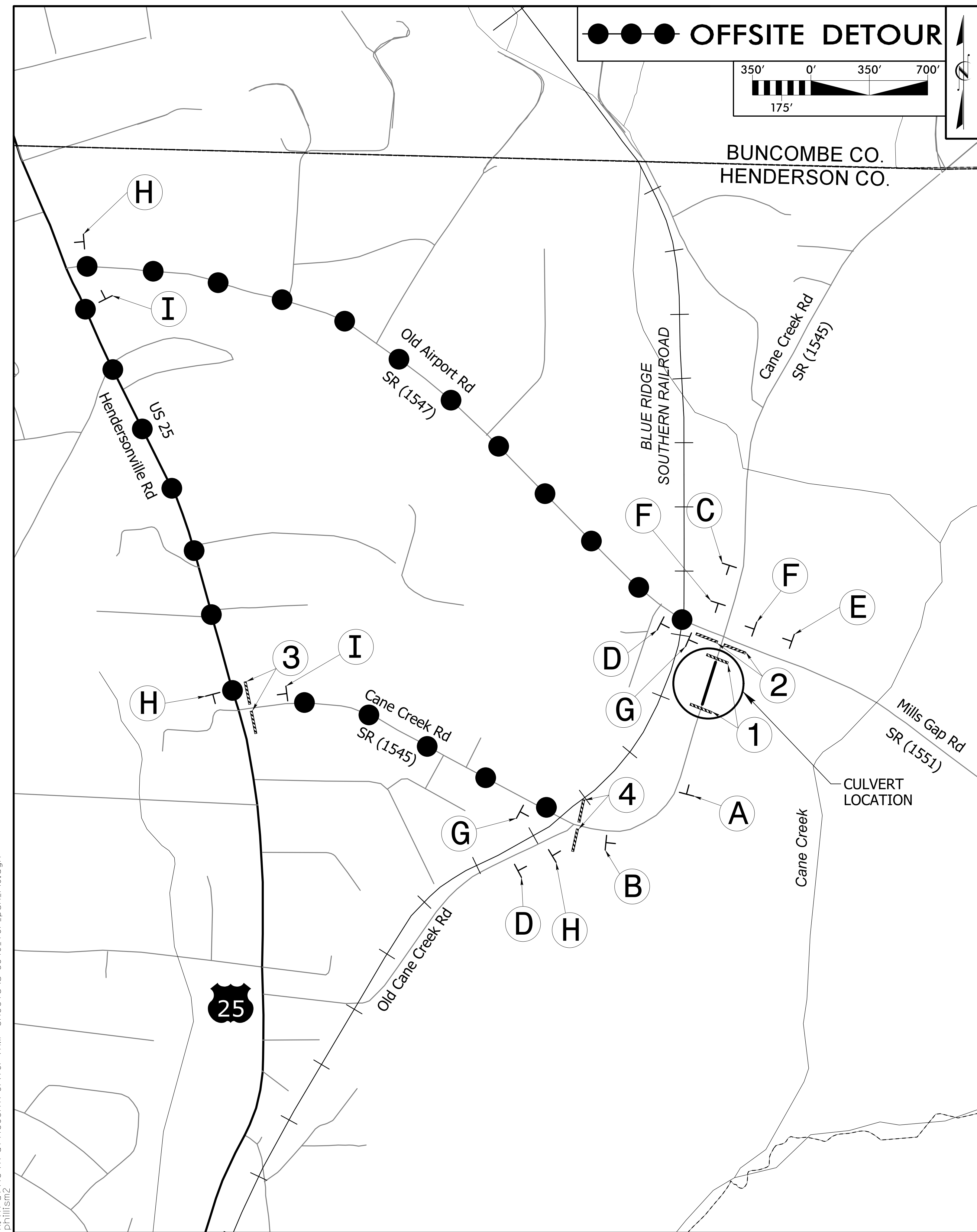


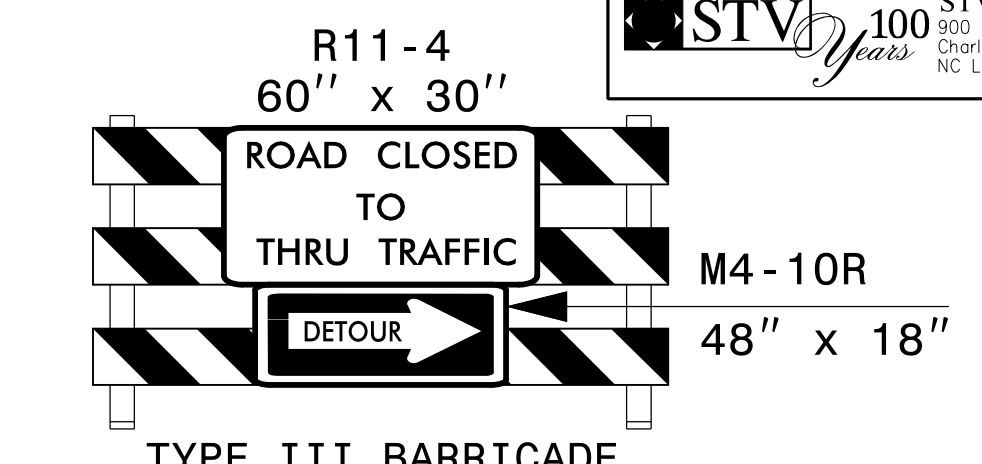
SEE ROADWAY STD DWG 1101.03, SHEET 1 OF 9 FOR ADVANCE WARNING AND BARRICADE PLACEMENT.

| | |
|---------------------|-----------|
| PROJ. REFERENCE NO. | SHEET NO. |
| U-5840 | TMP-19 |



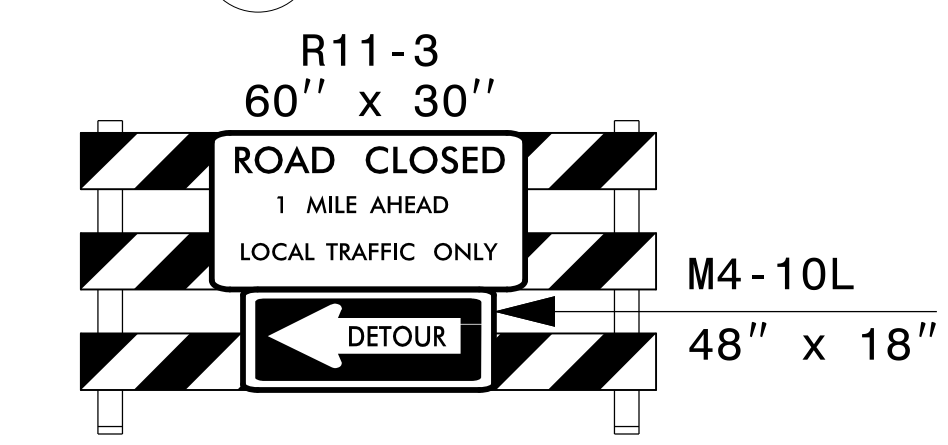
TYPE III BARRICADE(S)

1 (2 EA)



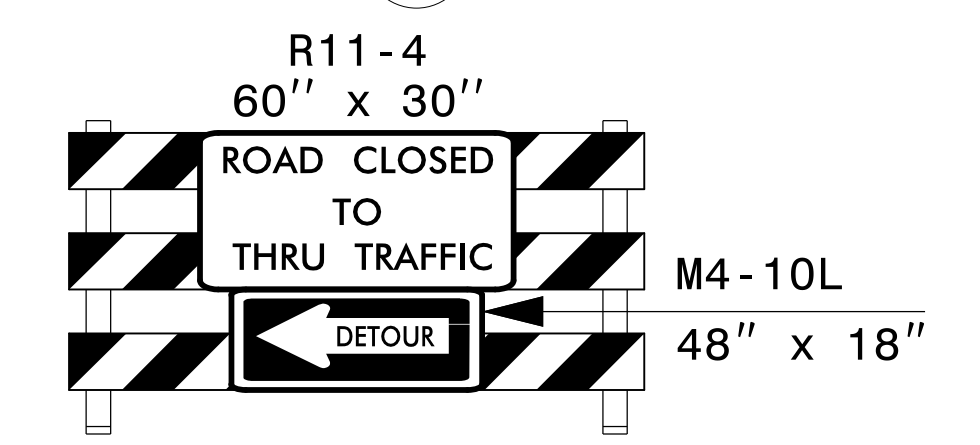
TYPE III BARRICADE

2 (2 EA)



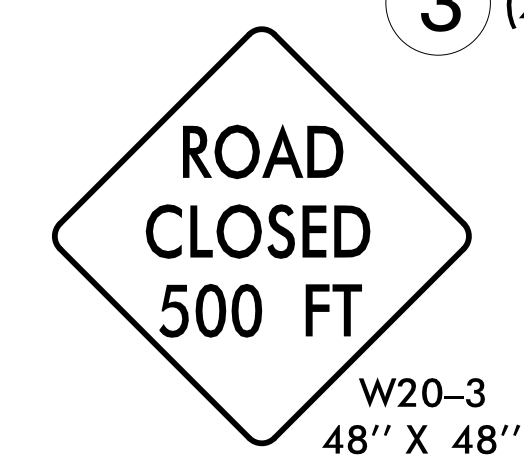
TYPE III BARRICADE

3 (2 EA)

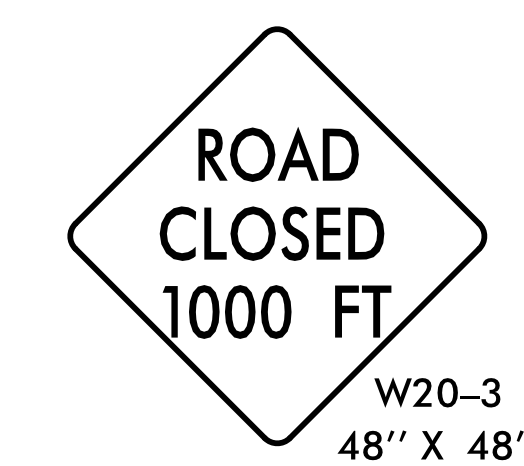


TYPE III BARRICADE

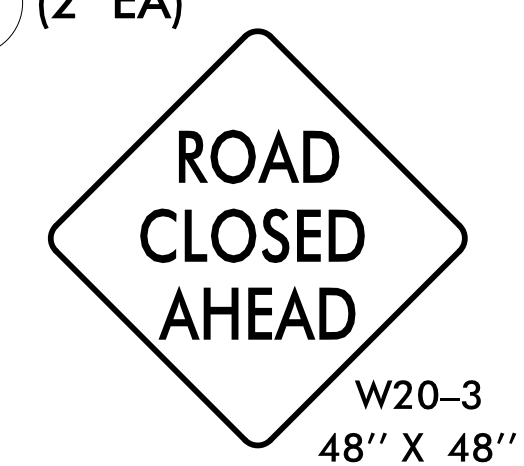
4 (2 EA)



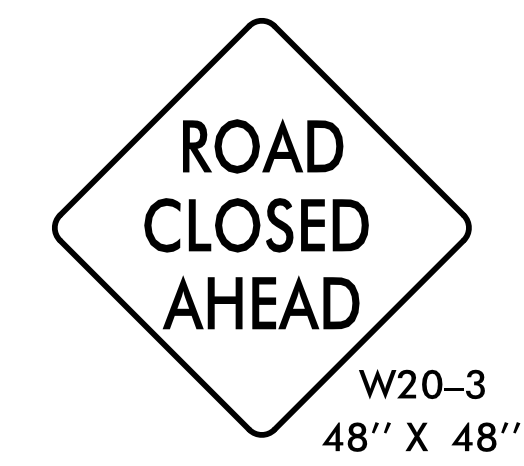
A (1 EA)



B (1 EA)



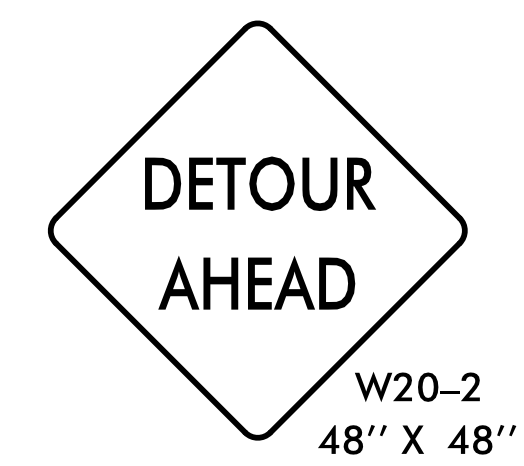
C (1 EA)



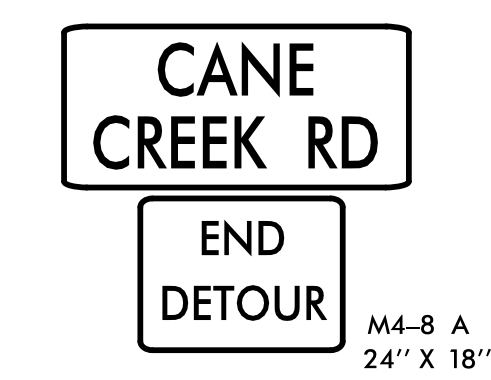
D (2 EA)
NEXT RIGHT
SP-4R
42" x 12"



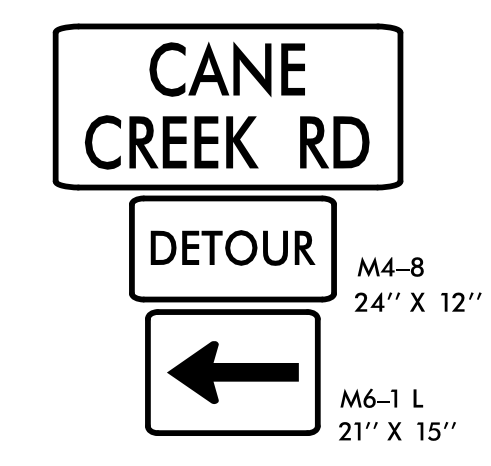
E (1 EA)
NEXT LEFT
SP-4L
42" x 12"



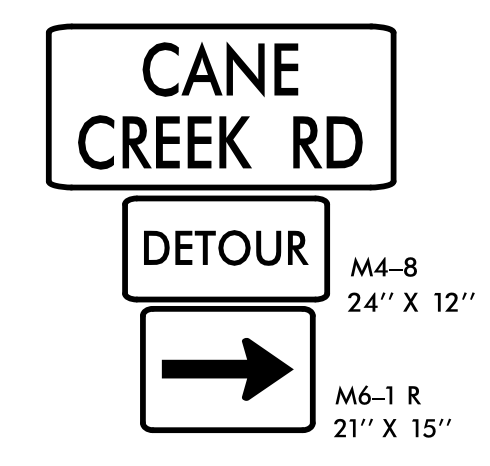
F (2 EA)



G (2 EA)

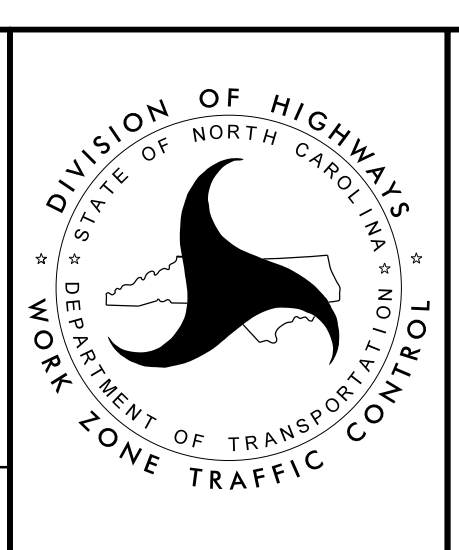


H (3 EA)



I (2 EA)

APPROVED: *[Signature]*
DATE: 3/30/2018
SEAL
DOCUMENT NOT CONSIDERED FINAL UNLESS ALL SIGNATURES COMPLETED



DIVISION OF HIGHWAYS
STATE OF NORTH CAROLINA
DEPARTMENT OF TRANSPORTATION
WORK ZONE TRAFFIC CONTROL

PHASE VIII
OFFSITE DETOUR
ROUTE

3/29/2018 R:\TrafficControl\TCP\TMP Sheets\U-5840_TCP_psh_P19.dgn