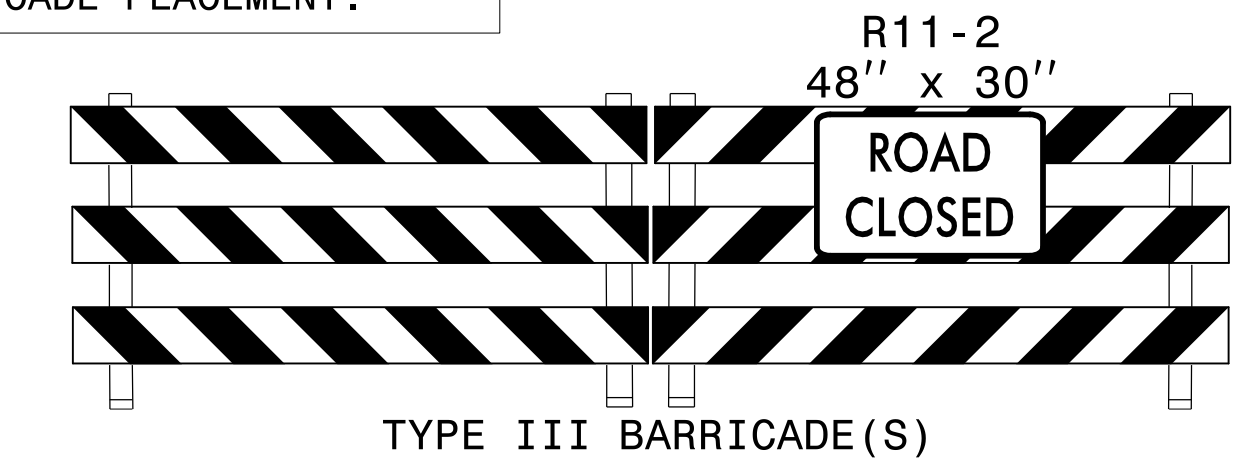
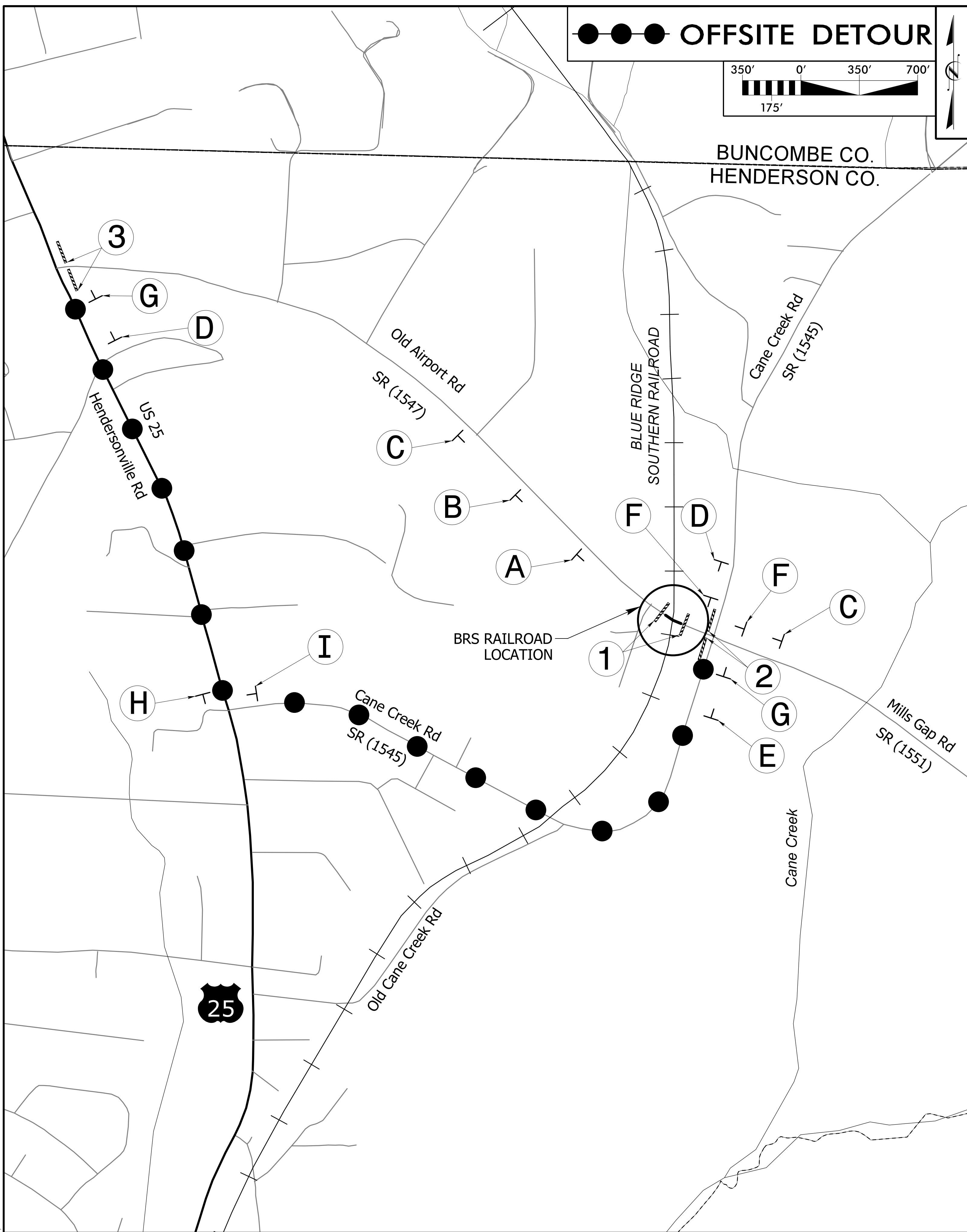
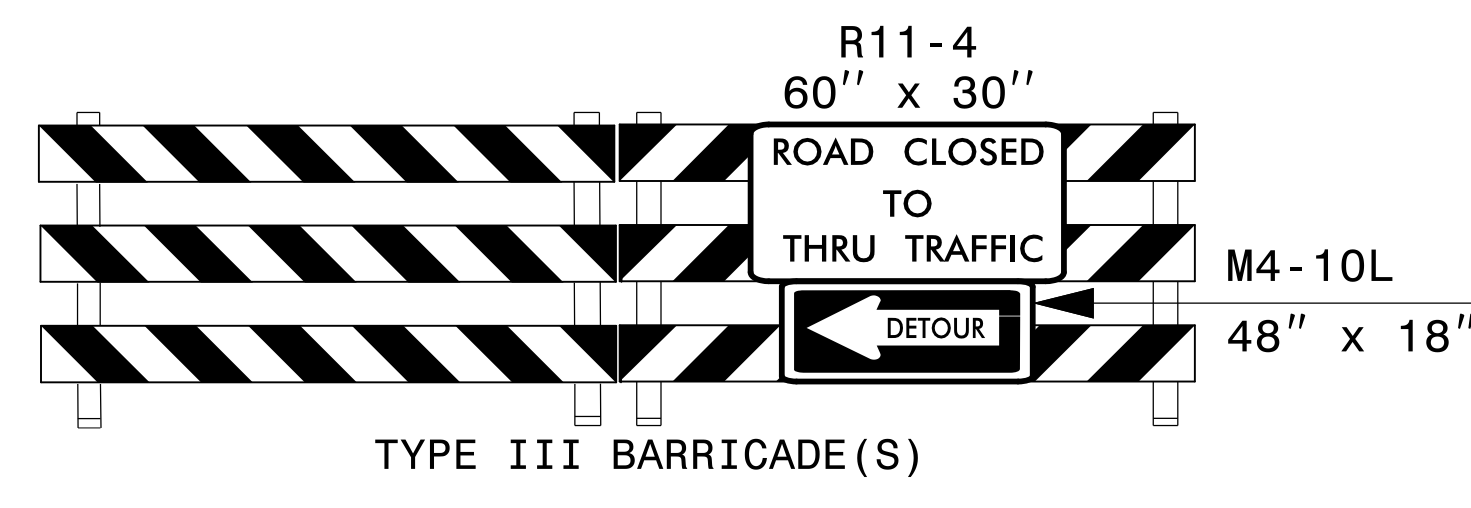


SEE ROADWAY STD DWG 1101.03, SHEET 1 OF 9 FOR ADVANCE WARNING AND BARRICADE PLACEMENT.

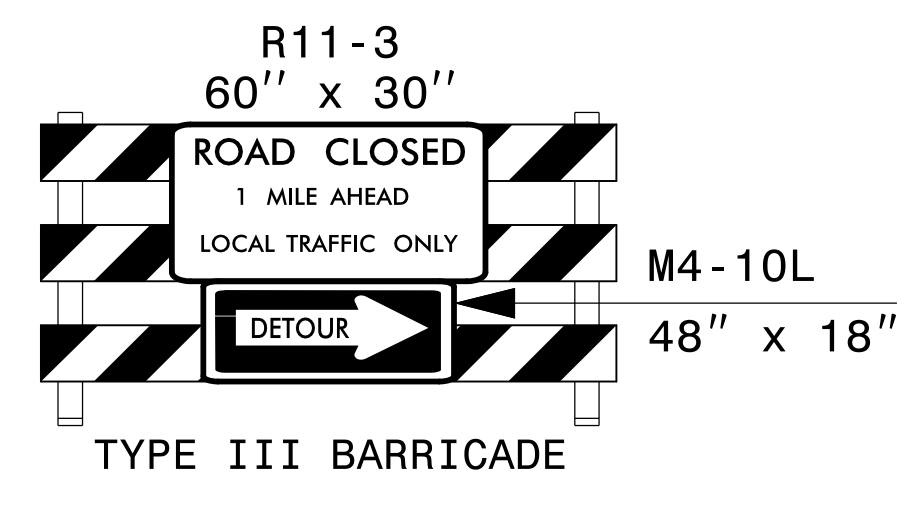
PROJ. REFERENCE NO. U-5840	SHEET NO. TMP-10
STV Engineers, Inc. 100 STV Engineers, Inc. 300 West Trade St., Suite 715 Charlotte, NC 28202 NC License Number F-0991	



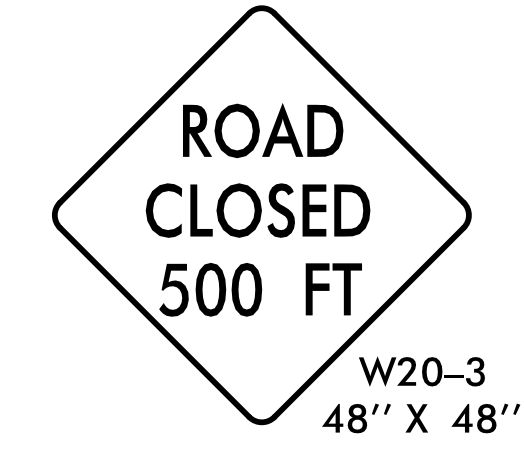
1 (4 EA)



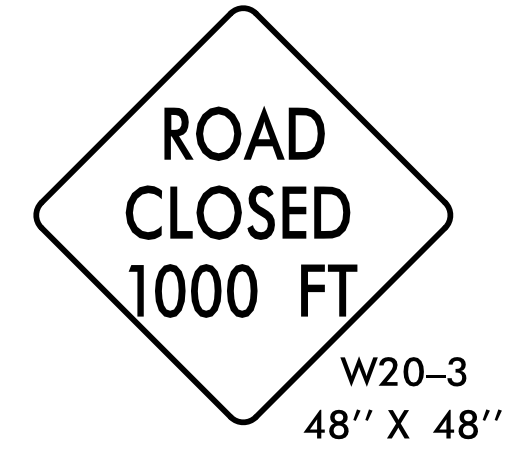
2 (2 EA)



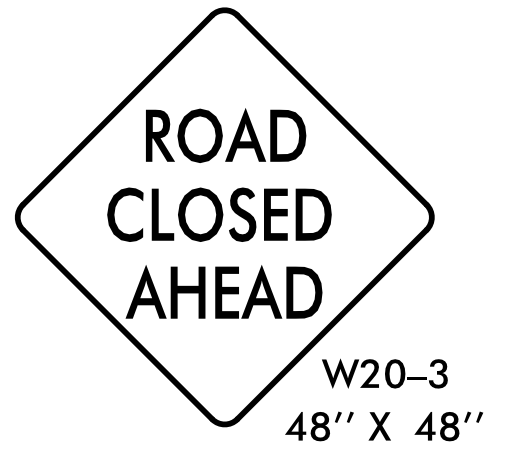
3 (2 EA)



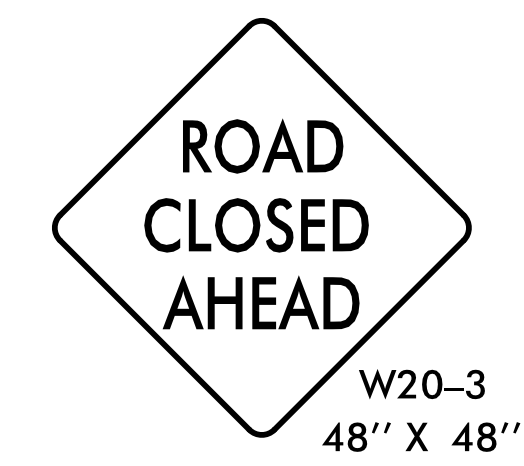
A (1 EA)



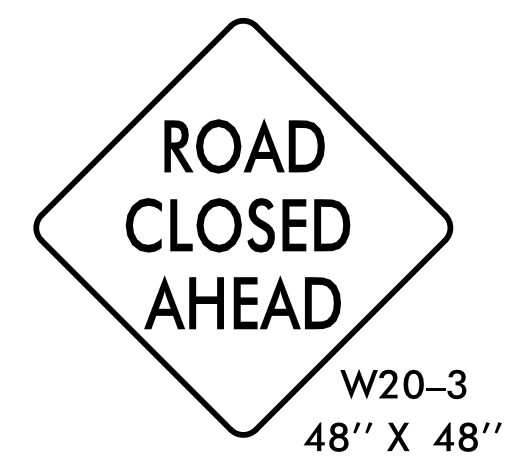
B (1 EA)



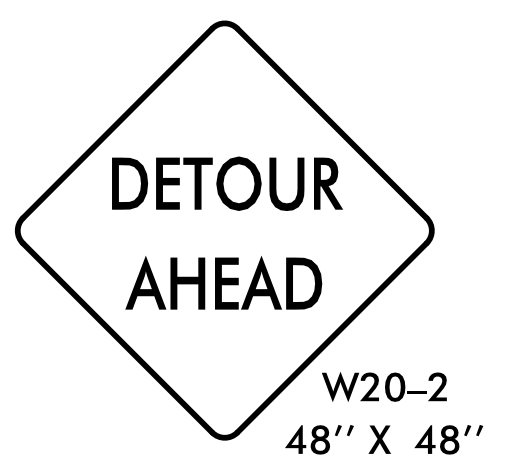
C (2 EA)



D (2 EA)



E (1 EA)



F (2 EA)



D (2 EA)



E (1 EA)



G (2 EA)



H (1 EA)



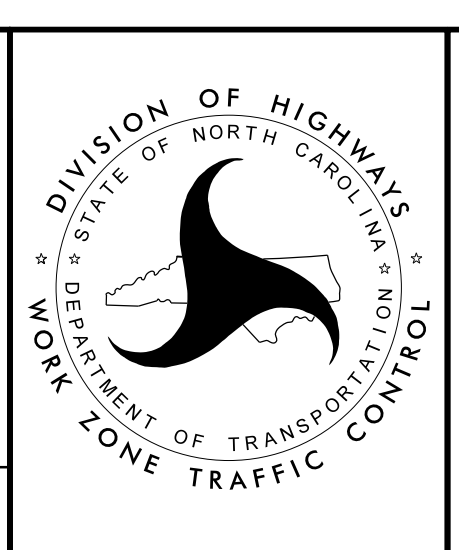
I (1 EA)

APPROVED:

DATE: 3/29/2018

SEAL

DOCUMENT NOT CONSIDERED FINAL UNLESS ALL SIGNATURES COMPLETED



PHASE III  
OFFSITE DETOUR ROUTE  
(RAILROAD CROSSING  
SURFACE INSTALLATION)

3/28/2018 R:\TrafficControl\TCP\TMP Sheets\U-5840\_TCP\_psh\_P10.dgn