
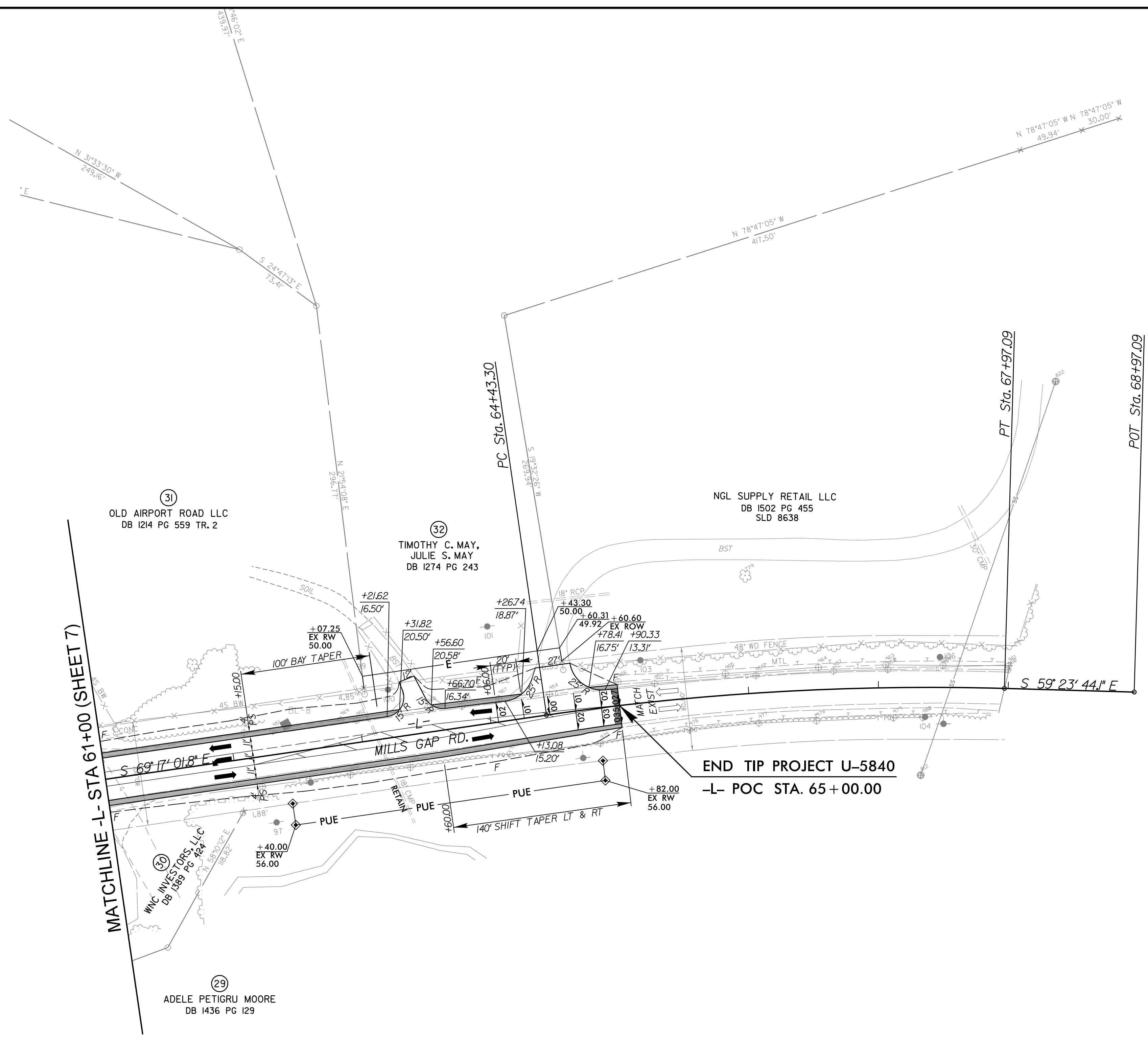
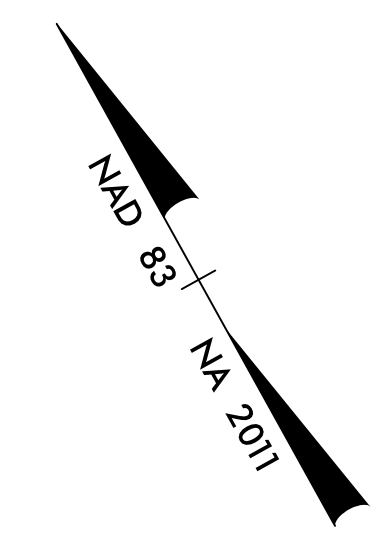


PROJECT REFERENCE NO. U-5840	SHEET NO. 8
RW SHEET NO.	
ROADWAY DESIGN ENGINEER SEAL 039234 TIMOTHY T. HONEYCUTT ENGINEER 11/13/2018	HYDRAULICS ENGINEER SEAL 029388 EDWARD J. VAN NEST ENGINEER 11/13/2018
DOCUMENT NOT CONSIDERED FINAL UNLESS ALL SIGNATURES COMPLETED	
 STV Engineers, Inc. 900 West Trade St., Suite 715 Charlotte, NC 28202 NC License Number F-0991	

CURVE DATA -L-

PI Sta 66+20.64
 $\Delta = 9^{\circ} 53' 17.7''$ (RT)
 $D = 2^{\circ} 47' 41.7''$
 $L = 353.79'$
 $T = 177.34'$
 $R = 2,050.00'$
 $e = EXIST$
 $RUNOFF = NA$
 $DS = NA$



END TIP PROJECT U-5840
-L- POC STA. 65+00.00

6/27/2018
 R:\Projects\Projects\SHIT\U-5840_rdy_psh08.dgn
 chulliam

SEE SHEET 11 FOR -L- PROFILE