

CURVE DATA -L-	CURVE DATA -Y1-	CURVE DATA -Y3-
PI Sta 28+90.72	PI Sta 11+09.01	PI Sta 11+15.08
$\Delta = 22^\circ 28' 28.5''$ (RT)	$\Delta = 12^\circ 05' 00.0''$ (RT)	$\Delta = 22^\circ 35' 04.6''$ (LT)
D = 3' 49' 11.0"	D = 15' 04' 40.2"	D = 19' 05' 54.9"
L = 588.38'	L = 80.14'	L = 118.25'
T = 298.02'	T = 40.22'	T = 59.90'
R = 1,500.00'	R = 380.00'	R = 300.00'
e = 3%	e = NA	e = NA
RUNOFF = 90'	RUNOFF = NA	RUNOFF = NA
DS = 40 MPH	DS = NA	DS = NA

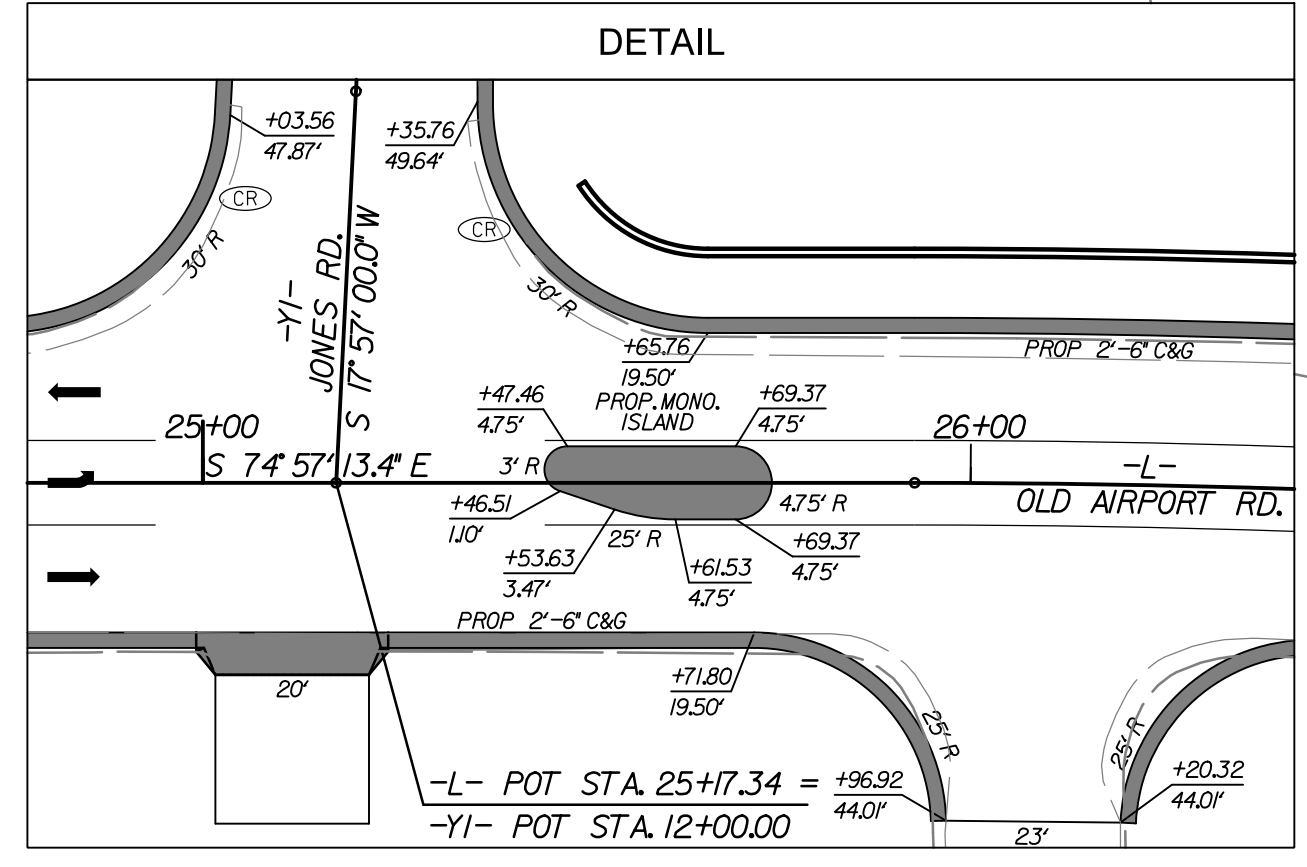
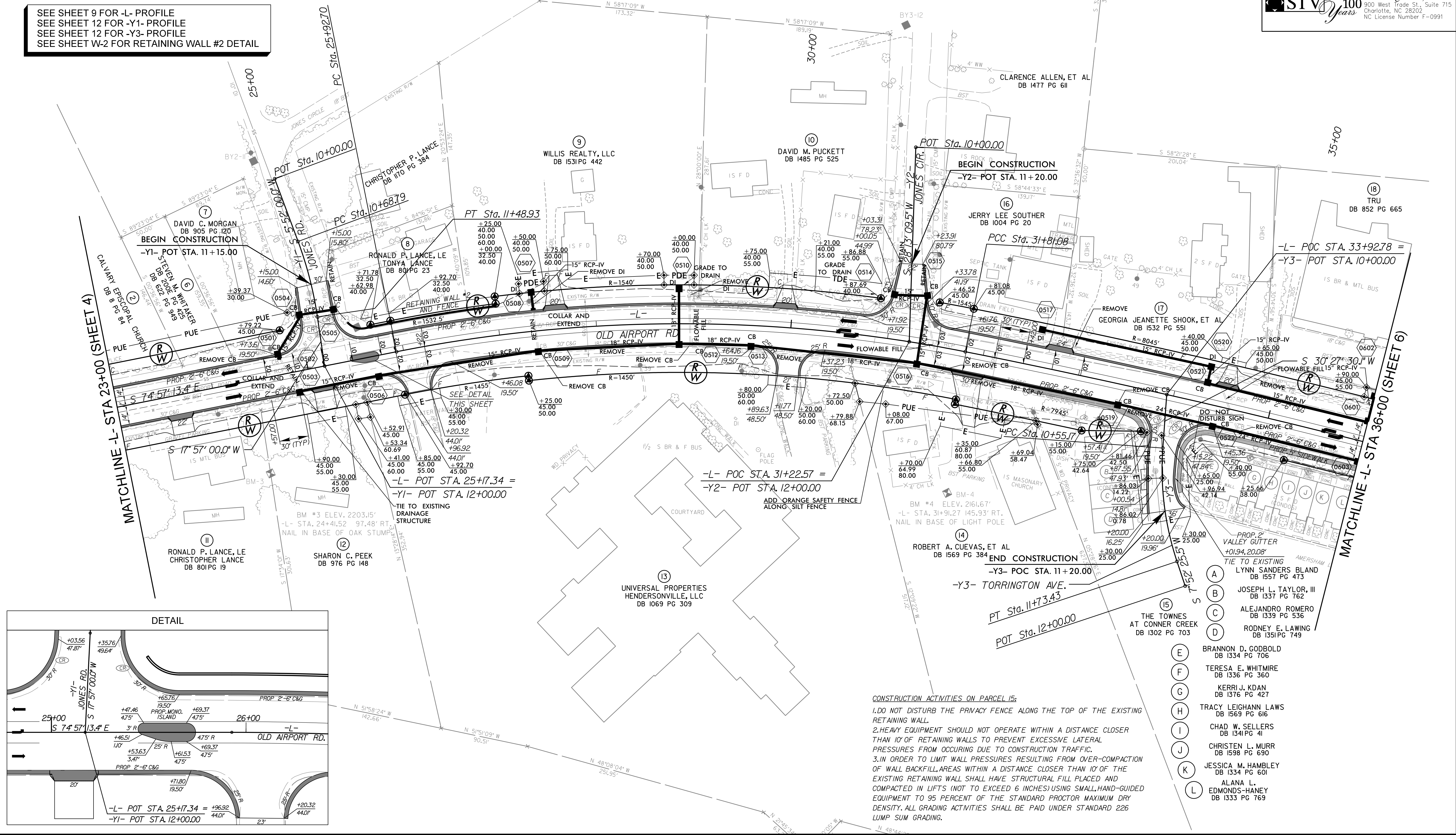
SEE SHEET 9 FOR -L- PROFILE
 SEE SHEET 12 FOR -Y1- PROFILE
 SEE SHEET 12 FOR -Y3- PROFILE
 SEE SHEET W-2 FOR RETAINING WALL #2 DETAIL

PROJECT REFERENCE NO. U-5840 SHEET NO. 5

RW SHEET NO. ROADWAY DESIGN ENGINEER HYDRAULICS ENGINEER

STV 100 Years STV Engineers, Inc. 900 West Trade St., Suite 715 Charlotte, NC 28202 NC License Number F-0991

DOCUMENT NOT CONSIDERED FINAL UNLESS ALL SIGNATURES COMPLETED



CONSTRUCTION ACTIVITIES ON PARCEL 15:

- DO NOT DISTURB THE PRIVACY FENCE ALONG THE TOP OF THE EXISTING RETAINING WALL.
- HEAVY EQUIPMENT SHOULD NOT OPERATE WITHIN A DISTANCE CLOSER THAN 10' OF RETAINING WALLS TO PREVENT EXCESSIVE LATERAL PRESSURES FROM OCCURRING DUE TO CONSTRUCTION TRAFFIC.
- IN ORDER TO LIMIT WALL PRESSURES RESULTING FROM OVER-COMPACTION OF WALL BACKFILL, AREAS WITHIN A DISTANCE CLOSER THAN 10' OF THE EXISTING RETAINING WALL SHALL HAVE STRUCTURAL FILL PLACED AND COMPACTED IN LIFTS (NOT TO EXCEED 6 INCHES) USING SMALL, HAND-GUIDED EQUIPMENT TO 95 PERCENT OF THE STANDARD PROCTOR MAXIMUM DRY DENSITY. ALL GRADING ACTIVITIES SHALL BE PAID UNDER STANDARD 226 LUMP SUM GRADING.

- (A) LYNN SANDERS BLAND DB 1557 PG 473
- (B) JOSEPH L. TAYLOR, III DB 1337 PG 762
- (C) ALEJANDRO ROMERO DB 1339 PG 536
- (D) RODNEY E. LAWING DB 1351 PG 749
- (E) BRANNON D. GODBOLD DB 1334 PG 706
- (F) TERESA E. WHITMIRE DB 1336 PG 360
- (G) KERRI J. KDAN DB 1376 PG 427
- (H) TRACY LEIGHANN LAWS DB 1569 PG 616
- (I) CHAD W. SELLERS DB 1341 PG 41
- (J) CHRISTEN L. MURR DB 1598 PG 690
- (K) JESSICA M. HAMBLEY DB 1334 PG 601
- (L) ALANA L. EDMONDS-HANEY DB 1333 PG 769

8/1/2018 10:05:11 AM Proj:\SHT\U-5840_rdy_psh05.dgn