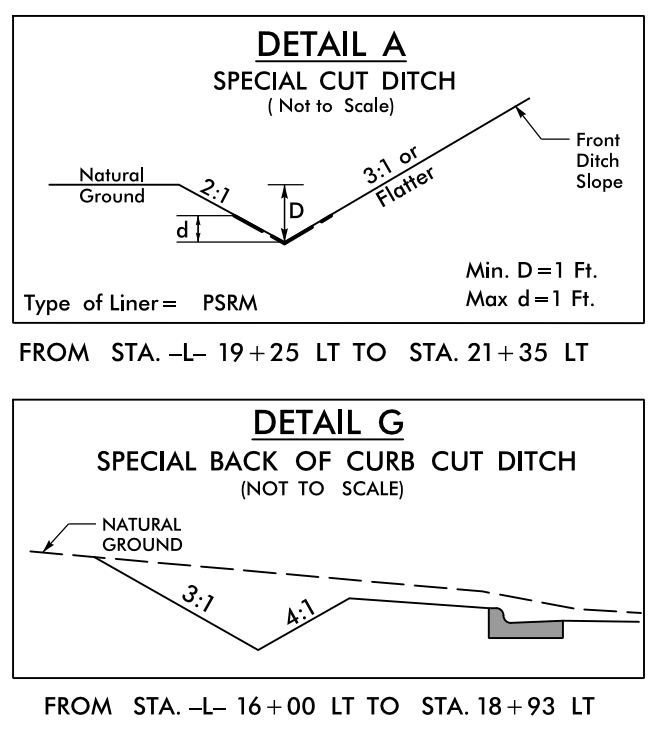
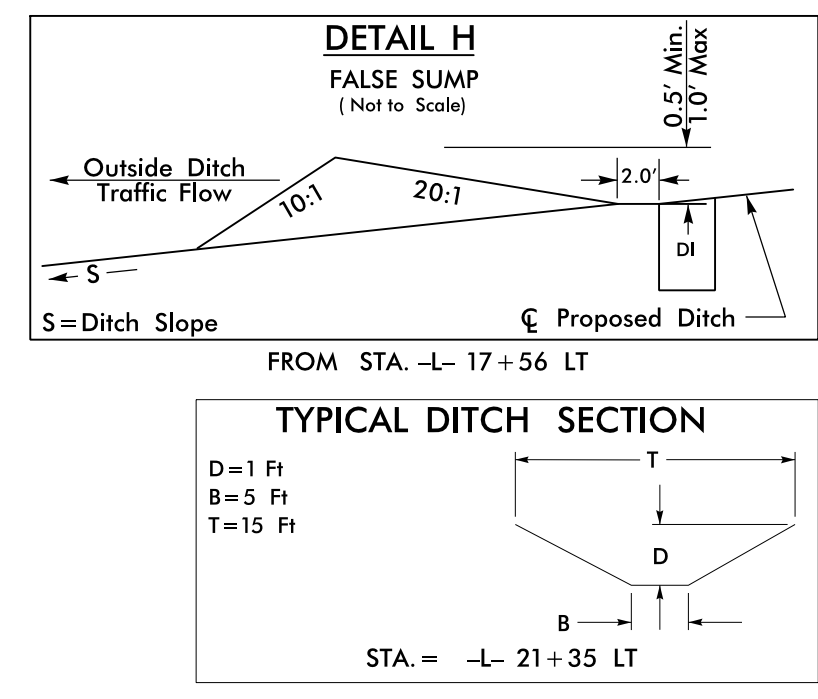
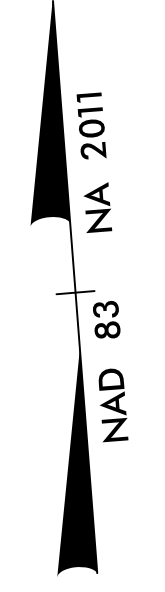


PROJECT REFERENCE NO. U-5840		SHEET NO. 4	
RW SHEET NO.		HYDRAULICS ENGINEER	
ROADWAY DESIGN ENGINEER		HYDRAULICS ENGINEER	
DOCUMENT NOT CONSIDERED FINAL UNLESS ALL SIGNATURES COMPLETED			
		STV Engineers, Inc. 900 West Trade St., Suite 715 Charlotte, NC 28202 NC License Number F-0991	



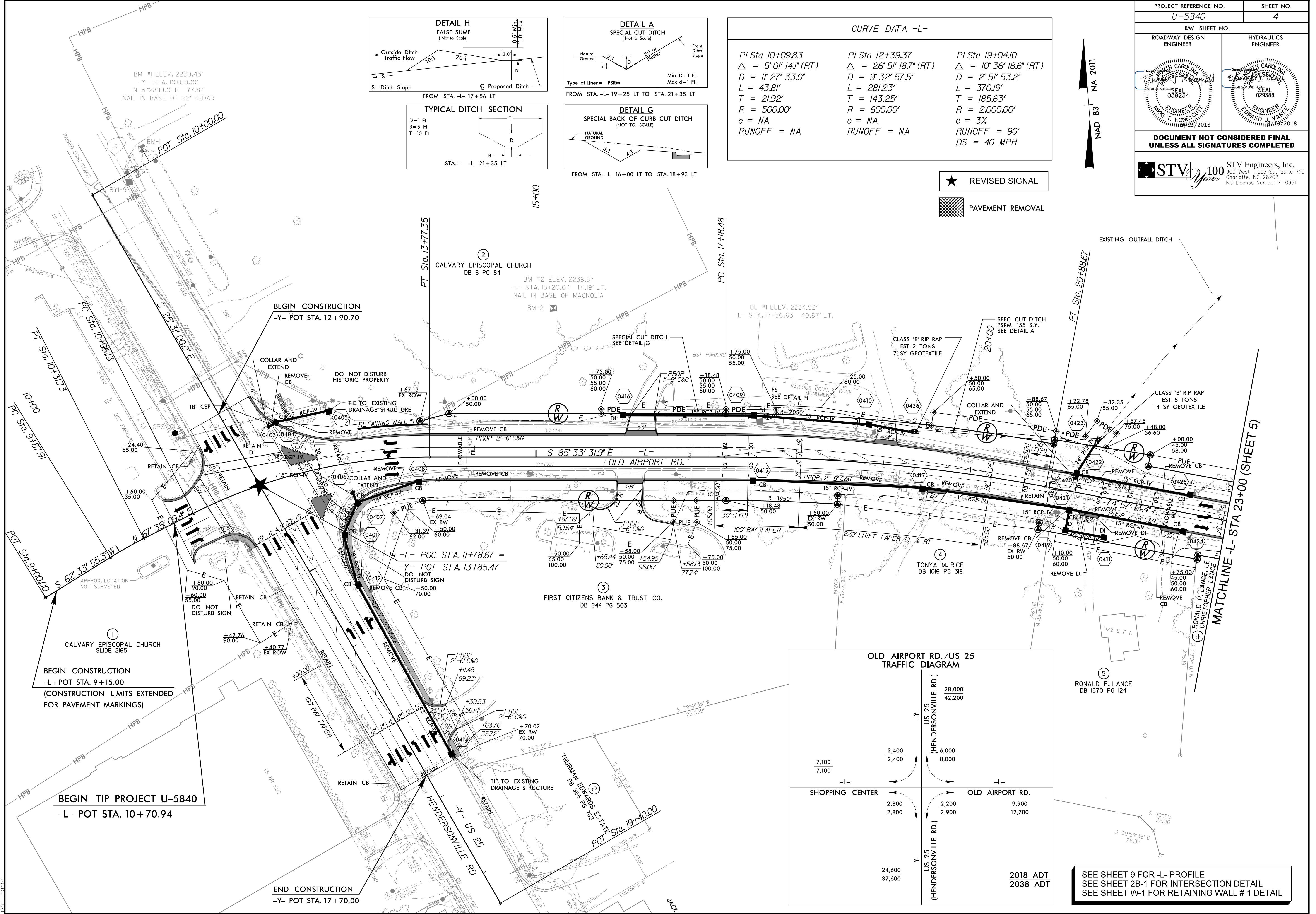
CURVE DATA -L-

PI Sta 10+09.83	PI Sta 12+39.37	PI Sta 19+04.10
$\Delta = 5^{\circ}01'14.1''$ (RT)	$\Delta = 26^{\circ}51'18.7''$ (RT)	$\Delta = 10^{\circ}36'18.6''$ (RT)
$D = 11^{\circ}27'33.0''$	$D = 9^{\circ}32'57.5''$	$D = 2^{\circ}51'53.2''$
$L = 43.81'$	$L = 281.23'$	$L = 370.19'$
$T = 21.92'$	$T = 143.25'$	$T = 185.63'$
$R = 500.00'$	$R = 600.00'$	$R = 2,000.00'$
$e = NA$	$e = NA$	$e = 3\%$
$RUNOFF = NA$	$RUNOFF = NA$	$RUNOFF = 90'$
		$DS = 40 MPH$



★ REVISED SIGNAL

▨ PAVEMENT REMOVAL



9/13/2016  
 P:\Projects\U-5840\U-5840\_rdy\_psh04.dgn  
 chullam