

**STATE OF NORTH CAROLINA
DEPARTMENT OF TRANSPORTATION**

**PAVEMENT MARKING PLAN
CHEROKEE COUNTY**

**LOCATION: BRIDGES Nos. 31 & 33 IN CHEROKEE CO. ON
US-19, US-64, US-74 & US-129 OVER HIWASSEE RIVER**

T.I.P.: 15BPR.29

ROADWAY STANDARD DRAWING

THE FOLLOWING ROADWAY STANDARDS AS APPEAR IN "ROADWAY STANDARD DRAWINGS" - PROJECT SERVICES UNIT - N.C. DEPARTMENT OF TRANSPORTATION - RALEIGH, N.C., DATED JANUARY 2018 ARE APPLICABLE TO THIS PROJECT AND BY REFERENCE HEREBY ARE CONSIDERED A PART OF THESE PLANS:

STD. NO.	TITLE
1205.01	PAVEMENT MARKINGS - LINE TYPES AND OFFSETS
1205.02	PAVEMENT MARKINGS - TWO-LANE AND MULTILANE ROADWAYS
1205.12	PAVEMENT MARKINGS - BRIDGES
1250.01	RAISED PAVEMENT MARKERS - INSTALLATION SPACING
1251.01	RAISED PAVEMENT MARKERS - PERMANENT AND TEMPORARY
1253.01	RAISED PAVEMENT MARKERS - SNOWPLOWABLE

GENERAL NOTES

THE FOLLOWING GENERAL NOTES APPLY AT ALL TIMES FOR THE DURATION OF THE CONSTRUCTION PROJECT, EXCEPT WHEN OTHERWISE NOTED IN THE PLAN, OR DIRECTED BY THE ENGINEER.

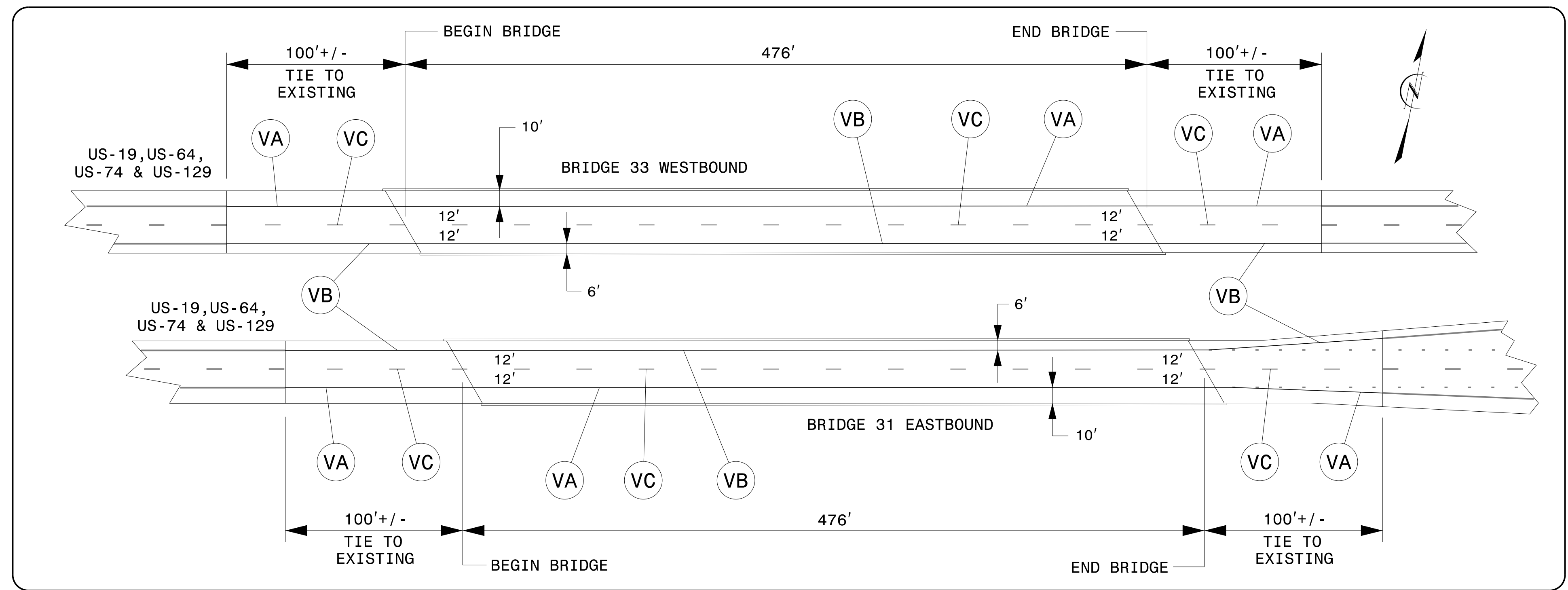
- A) INSTALL PAVEMENT MARKINGS AND PAVEMENT MARKERS ON THE FINAL SURFACE AS FOLLOWS:

ROAD NAME	MARKING	MARKER
US19, US64, US74 & US129 BRIDGES 31 & 33	POLYUREA WITH HIGHLY REFLECTIVE MEDIA	SNOW PLOWABLE

- B) TIE PROPOSED PAVEMENT MARKING LINES TO EXISTING PAVEMENT MARKING LINES.
C) REMOVE/REPLACE ANY CONFLICTING/DAMAGED PAVEMENT MARKINGS AND MARKERS.
D) REMOVE ALL RESIDUE AND SURFACE LAITANCE BY ACCEPTABLE METHODS ON CONCRETE BRIDGE DECKS PRIOR TO PLACING POLYUREA (WITH HIGHLY REFLECTIVE MEDIA) PAVEMENT MARKING MATERIAL.

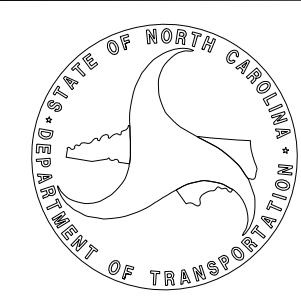
PAVEMENT MARKING SCHEDULE

SYMB	DESCRIPTION
	FINAL PAVEMENT MARKINGS
	POLYUREA (4") Highly Reflective Media
VA	WHITE EDGELINE
VB	YELLOW EDGELINE
VC	10 FT. WHITE SKIP
	MARKERS
	SNOWPLOWABLE RAISED PAVEMENT MARKERS
MF	CRYSTAL & RED



PLAN PREPARED BY: N.C.D.O.T. SIGNING AND DELINEATION UNIT

KELVIN JORDAN SIGNING & DELINEATION REGIONAL ENGINEER
DERRICK BEARD SIGNING & DELINEATION PROJECT DESIGN ENGINEER



CONTRACT: