

PROJECT REFERENCE NO.		SHEET NO.
B-4833		1C-1
STATE PROJ. NO.	F. A. PROJ. NO.	DESCRIPTION
38603.1.FD1	BRZ-2761 (1)	PE, UTIL.
17BP.5.R.96	N/A	R /W, CONST.
PROJECT SURVEYOR		

B4833-1
 N= 645715.8160
 E= 2086071.8440
 ELEV.=320.61'

B4833-2
 N= 645805.6190
 E= 2086840.1400
 ELEV.=309.21'

BM 1
 N= 646292.3580
 E= 2087850.9760
 ELEV.=256.00'

BL-103
 N= 646470.3910
 E= 2088039.2320
 ELEV.=240.53'

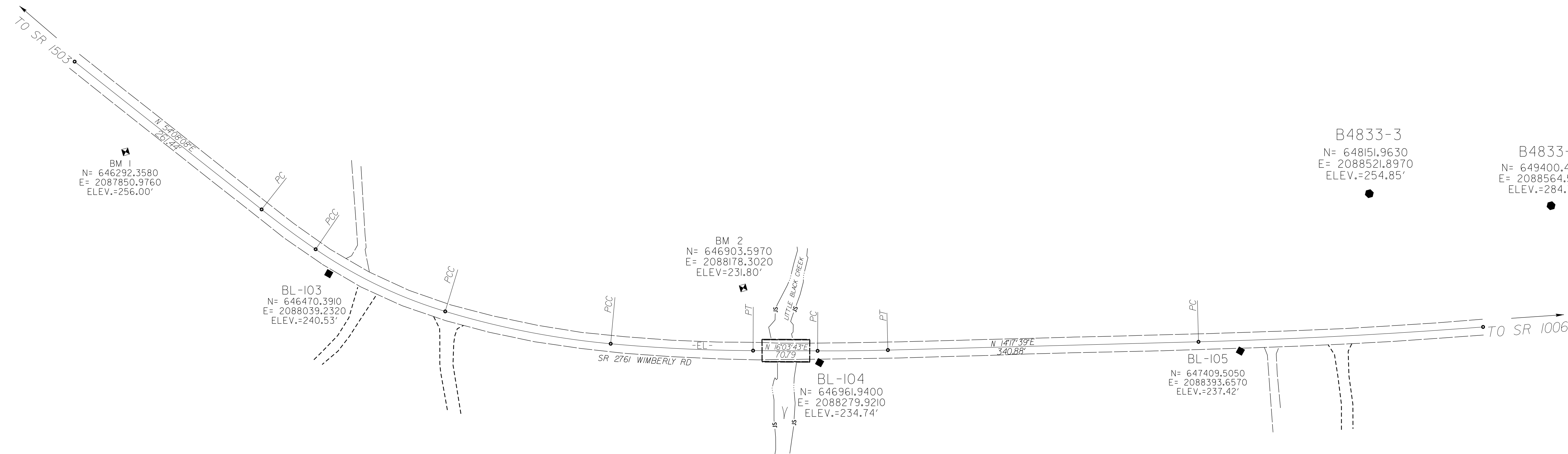
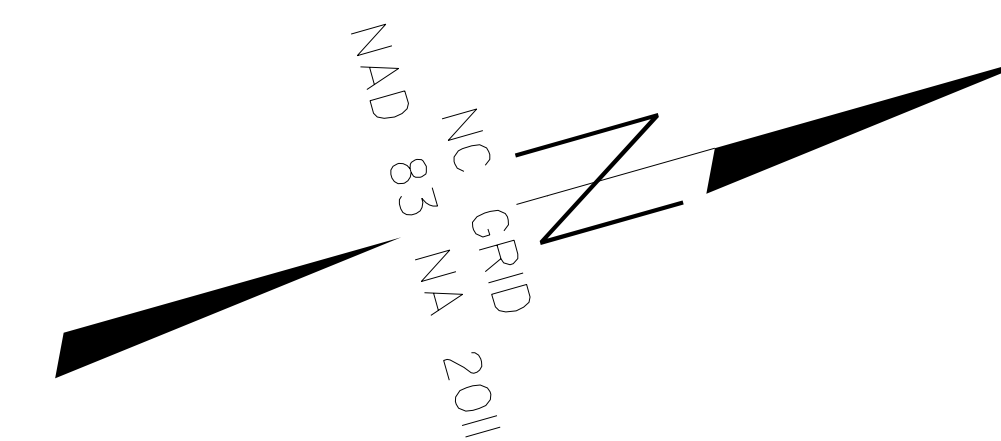
BM 2
 N= 646903.5970
 E= 2088178.3020
 ELEV.=231.80'

BL-104
 N= 646961.9400
 E= 2088279.9210
 ELEV.=234.74'

BL-105
 N= 647409.5050
 E= 2088393.6570
 ELEV.=237.42'

B4833-3
 N= 648151.9630
 E= 2088521.8970
 ELEV.=254.85'

B4833-4
 N= 649400.4770
 E= 2088564.5590
 ELEV.=284.79'



DATUM DESCRIPTION

THE LOCALIZED COORDINATE SYSTEM DEVELOPED FOR THIS PROJECT IS BASED ON THE STATE PLANE COORDINATES ESTABLISHED BY NCGS FOR MONUMENT "B4833-4"

WITH NAD 83/NA 2011 STATE PLANE GRID COORDINATES OF
 NORTHING: 649400.477(±) EASTING: 2088564.559(±)
 ELEVATION: 284.79(±)

THE AVERAGE COMBINED GRID FACTOR USED ON THIS PROJECT (GROUND TO GRID) IS: 0.99987542

THE N.C. LAMBERT GRID BEARING AND LOCALIZED HORIZONTAL GROUND DISTANCE FROM "B4833-2" TO -EL- STATION 10+00.00 IS
 N 62°54'53" E 1010.17

ALL LINEAR DIMENSIONS ARE LOCALIZED HORIZONTAL DISTANCES
 VERTICAL DATUM USED IS NAVD 88

NOTE: DRAWING NOT TO SCALE

NOTES:

- IF FURTHER INFORMATION REGARDING PROJECT CONTROL IS NEEDED, PLEASE CONTACT THE LOCATION AND SURVEYS UNIT.
- PROJECT CONTROL WAS ESTABLISHED USING GNSS, THE GLOBAL NAVIGATION SATELLITE SYSTEM.

2.7718