

**This electronic collection of documents is provided
for the convenience of the user
and is Not a Certified Document –**

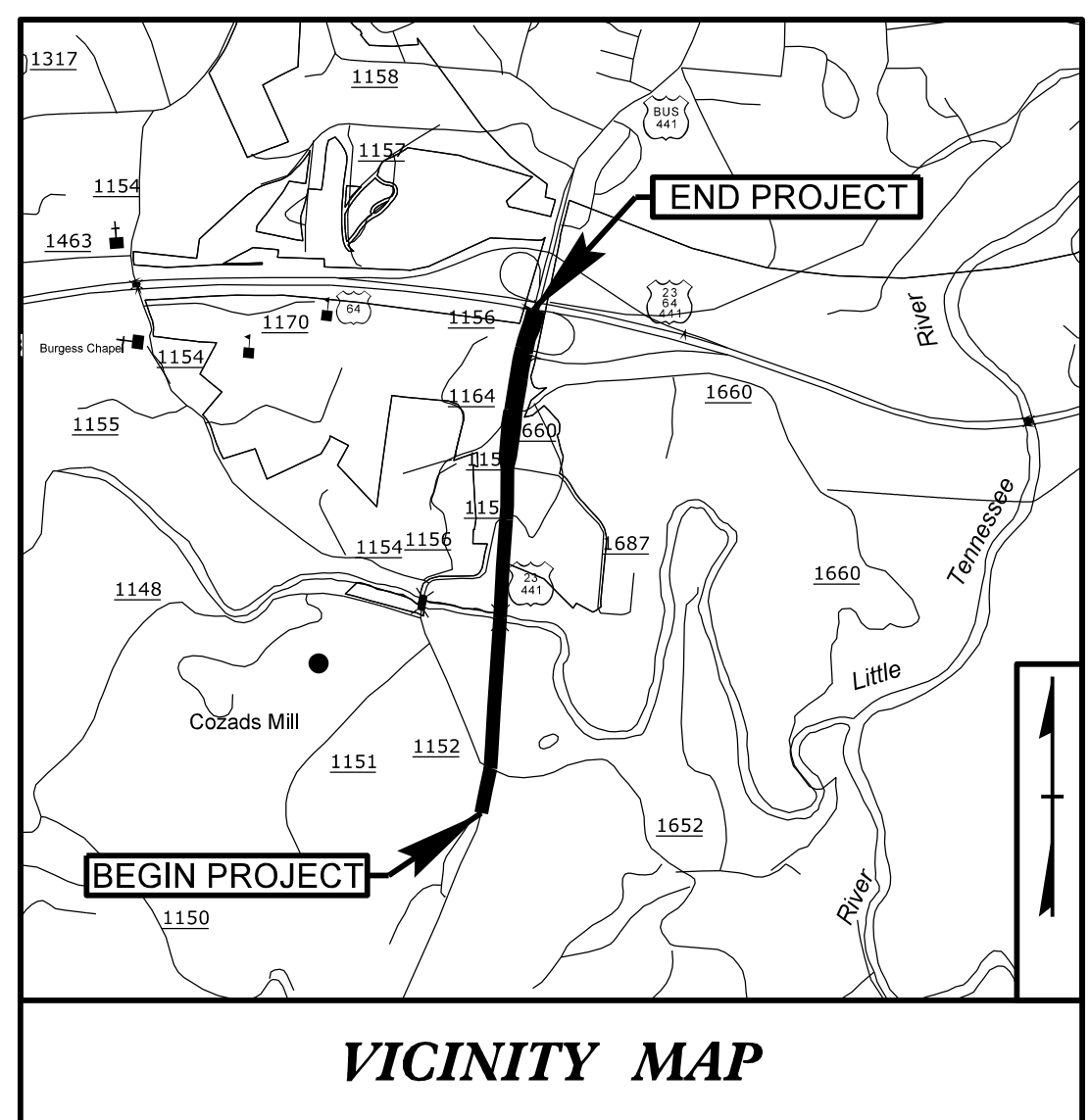
**The documents contained herein were originally issued
and sealed by the individuals whose names and license
numbers appear on each page, on the dates appearing
with their signature on that page.**

**This file or an individual page
shall not be considered a certified document.**

TIP PROJECT: R-5734A

T.I.P. NO.	SHEET NO.
R-5734A	UO-1

NOTE:
 ALL UTILITY WORK SHOWN ON THIS SHEET WILL BE DONE BY OTHERS. NO PAYMENT WILL BE MADE TO THE CONTRACTOR FOR UTILITY WORK SHOWN ON THIS SHEET.

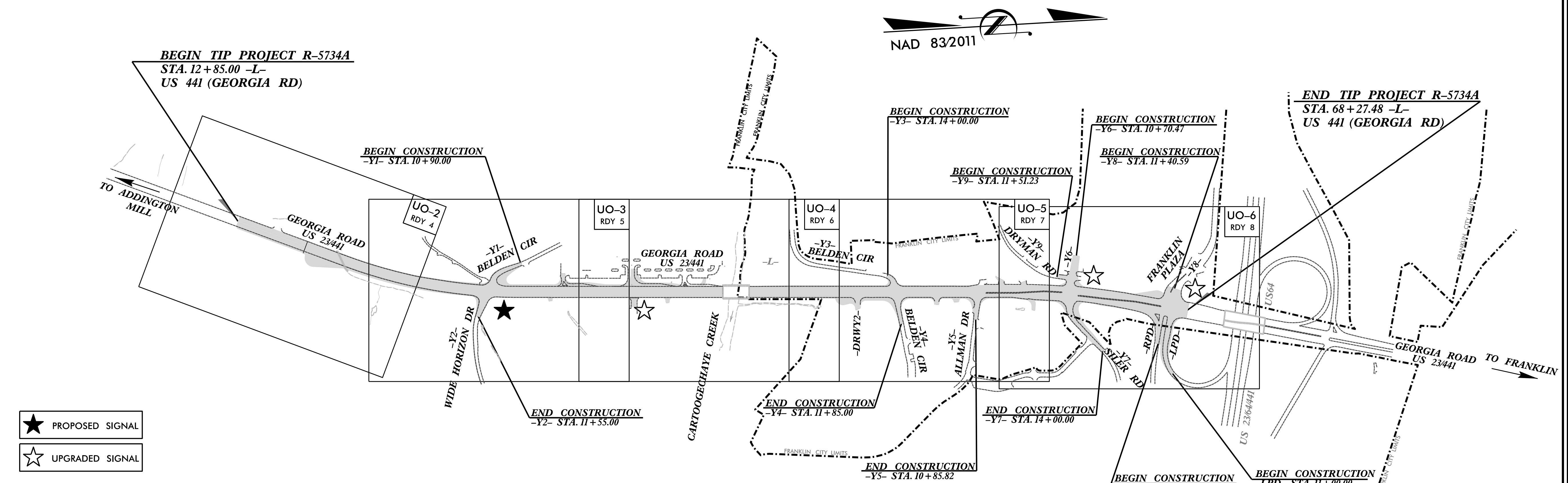


STATE OF NORTH CAROLINA DIVISION OF HIGHWAYS

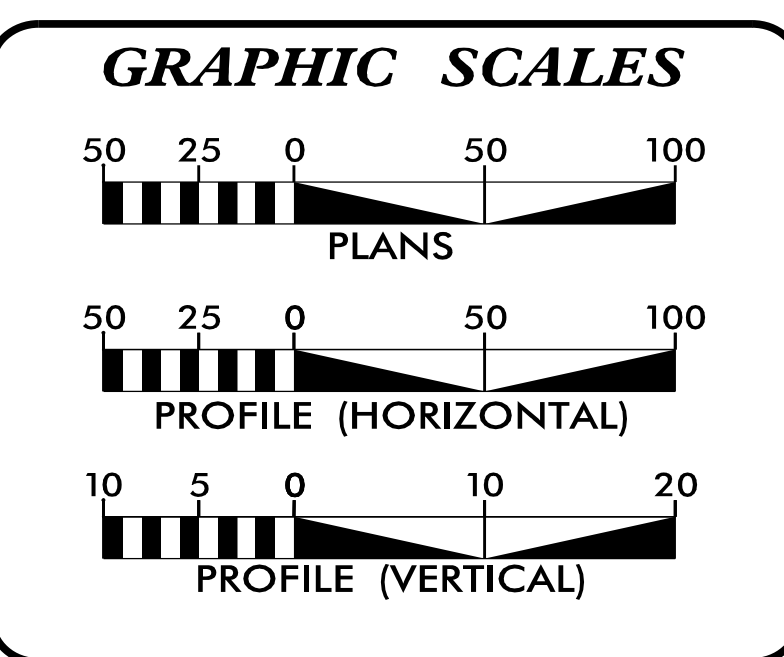
UTILITIES BY OTHERS PLANS MACON COUNTY

LOCATION: US 441 (GEORGIA ROAD) FROM SR 1652 (WIDE HORIZON DR.)/SR 1152 (BELDEN CIRCLE) TO US 64

TYPE OF WORK: UTILITY RELOCATION



A PORTION OF THIS PROJECT IS WITHIN THE MUNICIPAL BOUNDARIES OF THE TOWN OF FRANKLIN.
 CLEARING ON THIS PROJECT SHALL BE PERFORMED TO THE LIMITS ESTABLISHED BY METHOD II.
 THIS IS A NO CONTROL OF ACCESS PROJECT WITH FULL CONTROLLED ACCESS BEING LIMITED TO POINTS AS SHOWN ON THE PLANS.



INDEX OF SHEETS

SHEET NO.:	DESCRIPTION:
UO-1	TITLE SHEET
UO-2 THRU UO-6	UBO PLAN SHEETS

UTILITY OWNERS WITH CONFLICTS


- (A) POWER DISTRIBUTION - DUKE ENERGY
- (B) COMMUNICATIONS - FRONTIER
- (C) COMMUNICATIONS - BALSAMWEST FIBERNET
- (D) COMMUNICATIONS - MORRIS BROADBAND
- (E) GAS - TOCCOA NATURAL GAS

PREPARED IN THE OFFICE OF:

Michael Baker
 INTERNATIONAL

Michael Baker Engineering, Inc.
 8000 Regency Parkway, Suite 600
 Cary, NC 27518
 919-463-5488

Brandy Creech PROJECT UTILITY COORDINATOR
 Christiane Newsome PROJECT UTILITY TECHNICIAN



**DIVISION OF HIGHWAYS
 DIVISION 14**

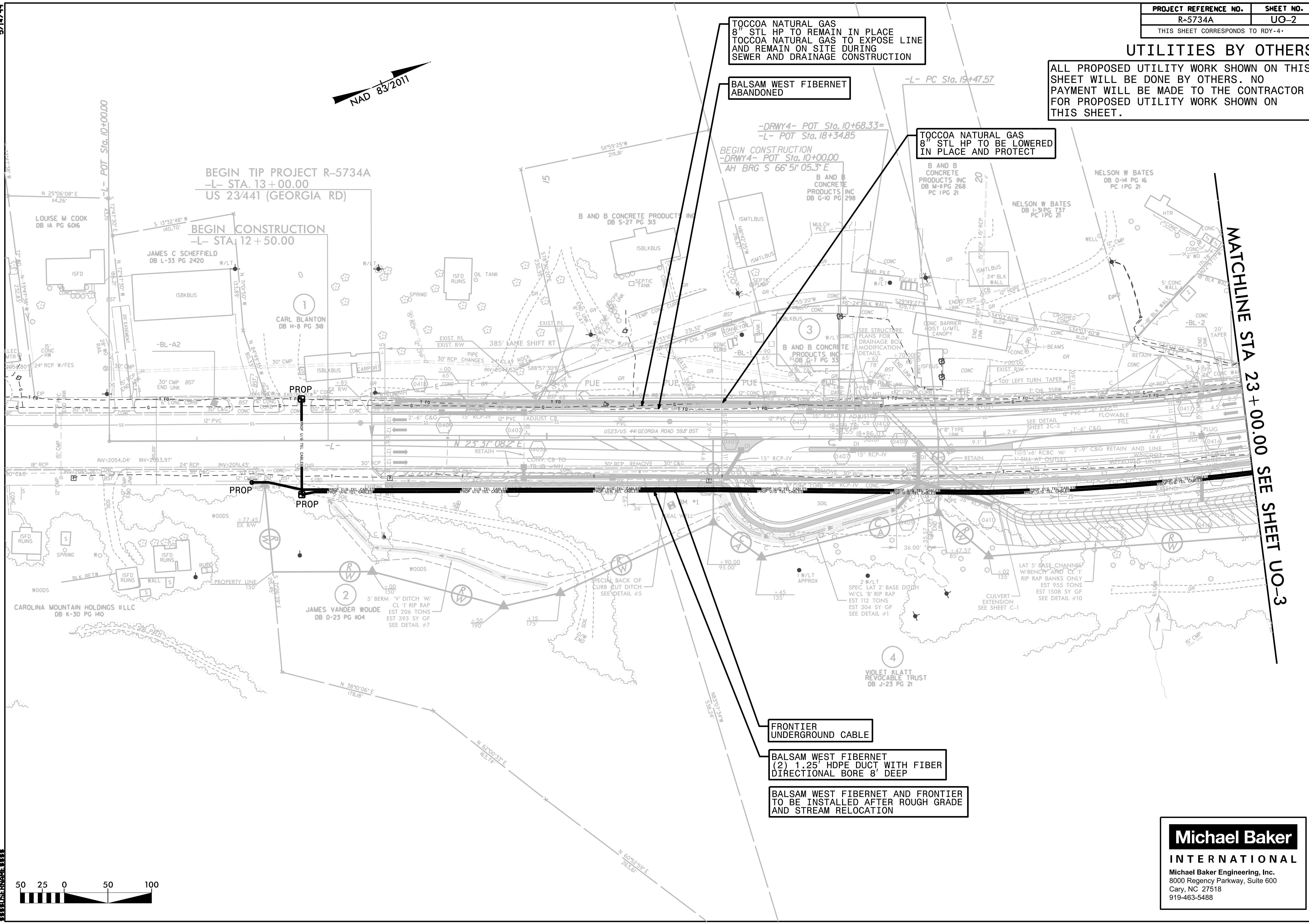
253 WEBSTER ROAD
 SYLVIA NC 28779
 PHONE (828) 586-2141

Kenneth McDowell ASSISTANT DESIGN CONSTRUCTION ENGINEER
 Bob Golding DIVISION UTILITY ENGINEER
 Steve Smallwood, PE STANTEC PROJECT ENGINEER

\$\$\$\$\$ SYSTEMS \$\$\$
 \$\$\$ DGN \$\$\$
 \$\$\$ USER NAME \$\$\$

UTILITIES BY OTHERS

ALL PROPOSED UTILITY WORK SHOWN ON THIS SHEET WILL BE DONE BY OTHERS. NO PAYMENT WILL BE MADE TO THE CONTRACTOR FOR PROPOSED UTILITY WORK SHOWN ON THIS SHEET.



TOCCOA NATURAL GAS
8" STL HP TO REMAIN IN PLACE
TOCCOA NATURAL GAS TO EXPOSE LINE
AND REMAIN ON SITE DURING
SEWER AND DRAINAGE CONSTRUCTION

BALSAM WEST FIBERNET
ABANDONED

TOCCOA NATURAL GAS
8" STL HP TO BE LOWERED
IN PLACE AND PROTECT

FRONTIER
UNDERGROUND CABLE

BALSAM WEST FIBERNET
(2) 1.25' HDPE DUCT WITH FIBER
DIRECTIONAL BORE 8' DEEP

BALSAM WEST FIBERNET AND FRONTIER
TO BE INSTALLED AFTER ROUGH GRADE
AND STREAM RELOCATION

MATCHLINE STA 23+00.00 SEE SHEET UO-3



Michael Baker
INTERNATIONAL
Michael Baker Engineering, Inc.
8000 Regency Parkway, Suite 600
Cary, NC 27518
919-463-5488

5/14/99

PROJECT REFERENCE NO.	SHEET NO.
R-5734A	UG-3
THIS SHEET CORRESPONDS TO RDY-5	

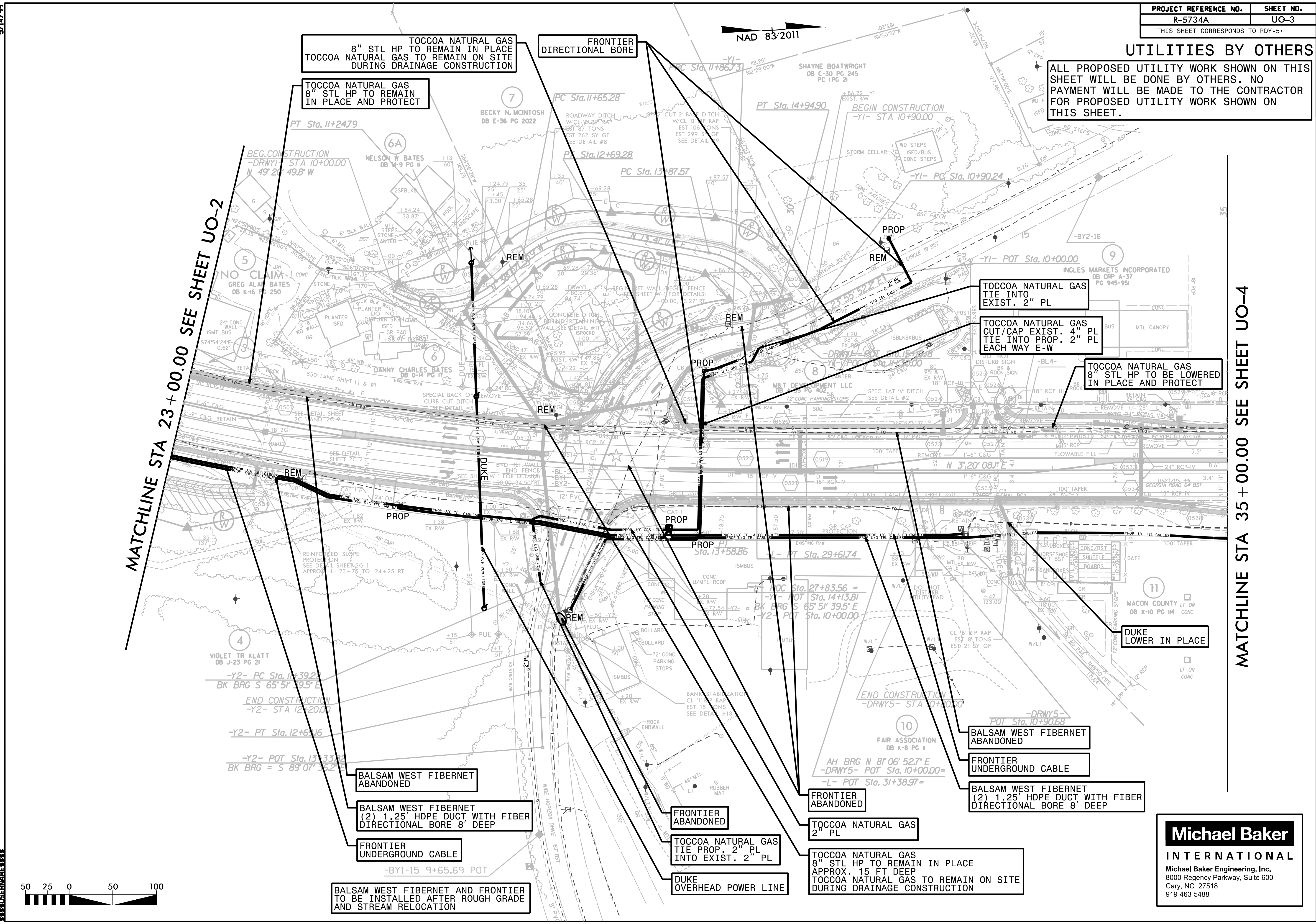
UTILITIES BY OTHERS

ALL PROPOSED UTILITY WORK SHOWN ON THIS SHEET WILL BE DONE BY OTHERS. NO PAYMENT WILL BE MADE TO THE CONTRACTOR FOR PROPOSED UTILITY WORK SHOWN ON THIS SHEET.

NAD 83/2011

MATCHLINE STA 23+00.00 SEE SHEET UO-2

MATCHLINE STA 35+00.00 SEE SHEET UO-4



TOCCOA NATURAL GAS
8" STL HP TO REMAIN IN PLACE
DURING DRAINAGE CONSTRUCTION

FRONTIER
DIRECTIONAL BORE

TOCCOA NATURAL GAS
8" STL HP TO REMAIN
IN PLACE AND PROTECT

TOCCOA NATURAL GAS
TIE INTO
EXIST. 2" PL

TOCCOA NATURAL GAS
CUT/CAP EXIST. 4" PL
TIE INTO PROP. 2" PL
EACH WAY E-W

TOCCOA NATURAL GAS
8" STL HP TO BE LOWERED
IN PLACE AND PROTECT

DUKE
LOWER IN PLACE

BALSAM WEST FIBERNET
ABANDONED

BALSAM WEST FIBERNET
(2) 1.25' HDPE DUCT WITH FIBER
DIRECTIONAL BORE 8' DEEP

FRONTIER
UNDERGROUND CABLE

BALSAM WEST FIBERNET AND FRONTIER
TO BE INSTALLED AFTER ROUGH GRADE
AND STREAM RELOCATION

FRONTIER
ABANDONED

TOCCOA NATURAL GAS
TIE PROP. 2" PL
INTO EXIST. 2" PL

DUKE
OVERHEAD POWER LINE

FRONTIER
ABANDONED

TOCCOA NATURAL GAS
2" PL

TOCCOA NATURAL GAS
8" STL HP TO REMAIN IN PLACE
APPROX. 15 FT DEEP
TOCCOA NATURAL GAS TO REMAIN ON SITE
DURING DRAINAGE CONSTRUCTION

BALSAM WEST FIBERNET
ABANDONED

FRONTIER
UNDERGROUND CABLE

BALSAM WEST FIBERNET
(2) 1.25' HDPE DUCT WITH FIBER
DIRECTIONAL BORE 8' DEEP



Michael Baker
INTERNATIONAL
Michael Baker Engineering, Inc.
8000 Regency Parkway, Suite 600
Cary, NC 27518
919-463-5488

5/14/99

PROJECT REFERENCE NO.	SHEET NO.
R-5734A	UO-4
THIS SHEET CORRESPONDS TO RDY-6	

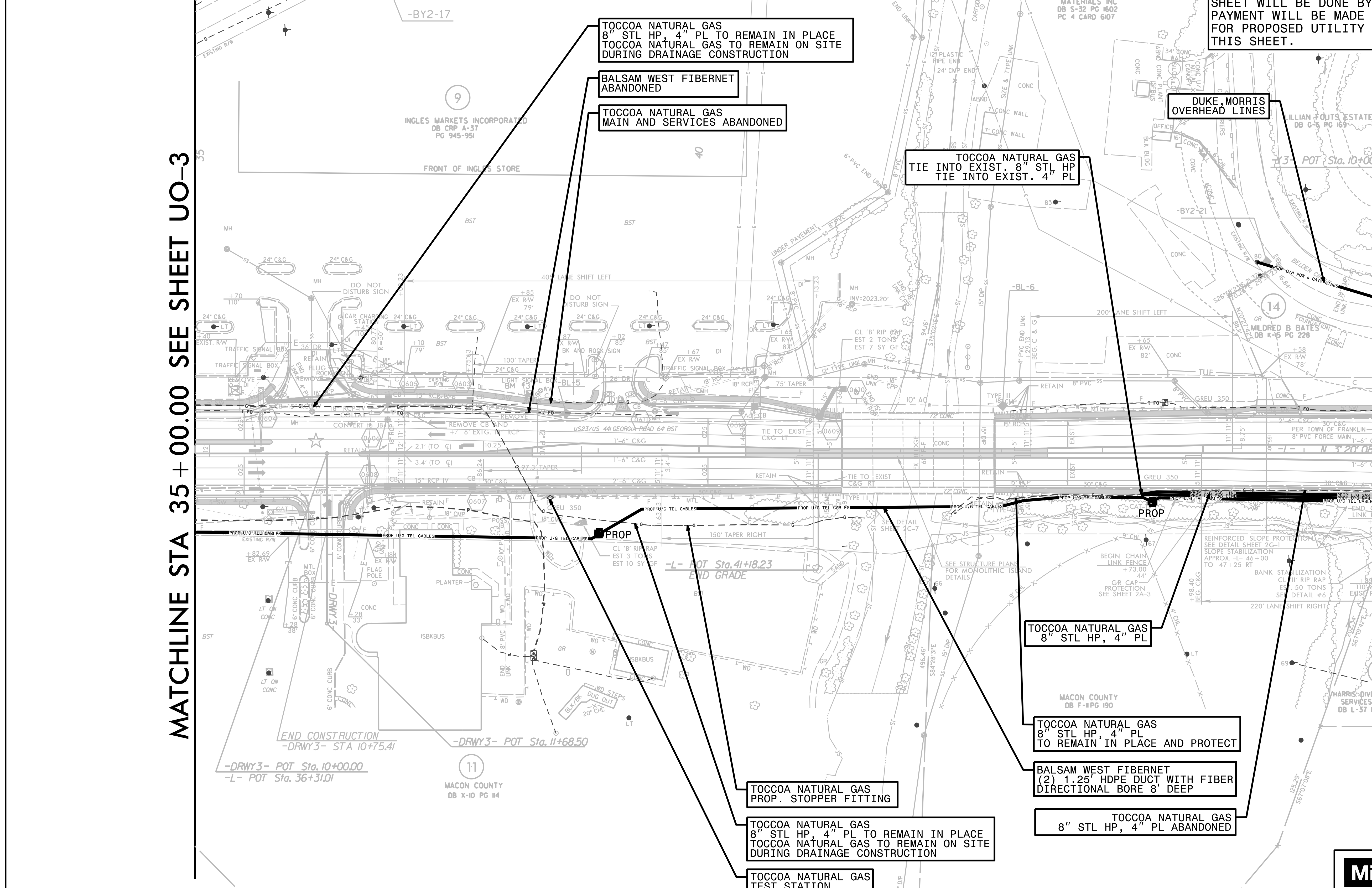
UTILITIES BY OTHERS

ALL PROPOSED UTILITY WORK SHOWN ON THIS SHEET WILL BE DONE BY OTHERS. NO PAYMENT WILL BE MADE TO THE CONTRACTOR FOR PROPOSED UTILITY WORK SHOWN ON THIS SHEET.

MATCHLINE STA 35 + 00.00 SEE SHEET UO-3

MATCHLINE STA 47 + 00.00 SEE SHEET UO-5

NAD 83/2011



TOCCOA NATURAL GAS
8" STL HP, 4" PL TO REMAIN IN PLACE
TOCCOA NATURAL GAS TO REMAIN ON SITE
DURING DRAINAGE CONSTRUCTION

BALSAM WEST FIBERNET
ABANDONED

TOCCOA NATURAL GAS
MAIN AND SERVICES ABANDONED

TOCCOA NATURAL GAS
TIE INTO EXIST. 8" STL HP
TIE INTO EXIST. 4" PL

DUKE, MORRIS
OVERHEAD LINES

TOCCOA NATURAL GAS
8" STL HP, 4" PL

TOCCOA NATURAL GAS
8" STL HP, 4" PL
TO REMAIN IN PLACE AND PROTECT

BALSAM WEST FIBERNET
(2) 1.25" HDPE DUCT WITH FIBER
DIRECTIONAL BORE 8' DEEP

TOCCOA NATURAL GAS
8" STL HP, 4" PL ABANDONED

TOCCOA NATURAL GAS
PROP. STOPPER FITTING

TOCCOA NATURAL GAS
8" STL HP, 4" PL TO REMAIN IN PLACE
TOCCOA NATURAL GAS TO REMAIN ON SITE
DURING DRAINAGE CONSTRUCTION

TOCCOA NATURAL GAS
TEST STATION
TO BE ADJUSTED

★ PROPOSED SIGNAL



Michael Baker
INTERNATIONAL
Michael Baker Engineering, Inc.
8000 Regency Parkway, Suite 600
Cary, NC 27518
919-463-5488

5/14/99

PROJECT REFERENCE NO.	SHEET NO.
R-5734A	UO-5
THIS SHEET CORRESPONDS TO RDY-7	

UTILITIES BY OTHERS

ALL PROPOSED UTILITY WORK SHOWN ON THIS SHEET WILL BE DONE BY OTHERS. NO PAYMENT WILL BE MADE TO THE CONTRACTOR FOR PROPOSED UTILITY WORK SHOWN ON THIS SHEET.

NAD 83/2011

MATCHLINE STA 47 + 00.00 SEE SHEET UO-4

MATCHLINE STA 59 + 00.00 SEE SHEET UO-6

DUKE, MORRIS OVERHEAD LINES

DUKE, MORRIS, FRONTIER OVERHEAD LINES

TOCCOA NATURAL GAS 8" STL HP, 4" PL

TOCCOA NATURAL GAS 8" STL HP, 4" PL ABANDONED

FRONTIER UNDERGROUND CABLE

FRONTIER ABANDONED

FRONTIER REPLACE PED

BALSAM WEST FIBERNET ABANDONED

BALSAM WEST FIBERNET (2) 1.25' HDPE DUCT WITH FIBER DIRECTIONAL BORE 8' DEEP

TOCCOA NATURAL GAS 4" PL CONTINUES TO OLD SILER ROAD



Michael Baker INTERNATIONAL
 Michael Baker Engineering, Inc.
 8000 Regency Parkway, Suite 600
 Cary, NC 27518
 919-463-5488

5/14/99

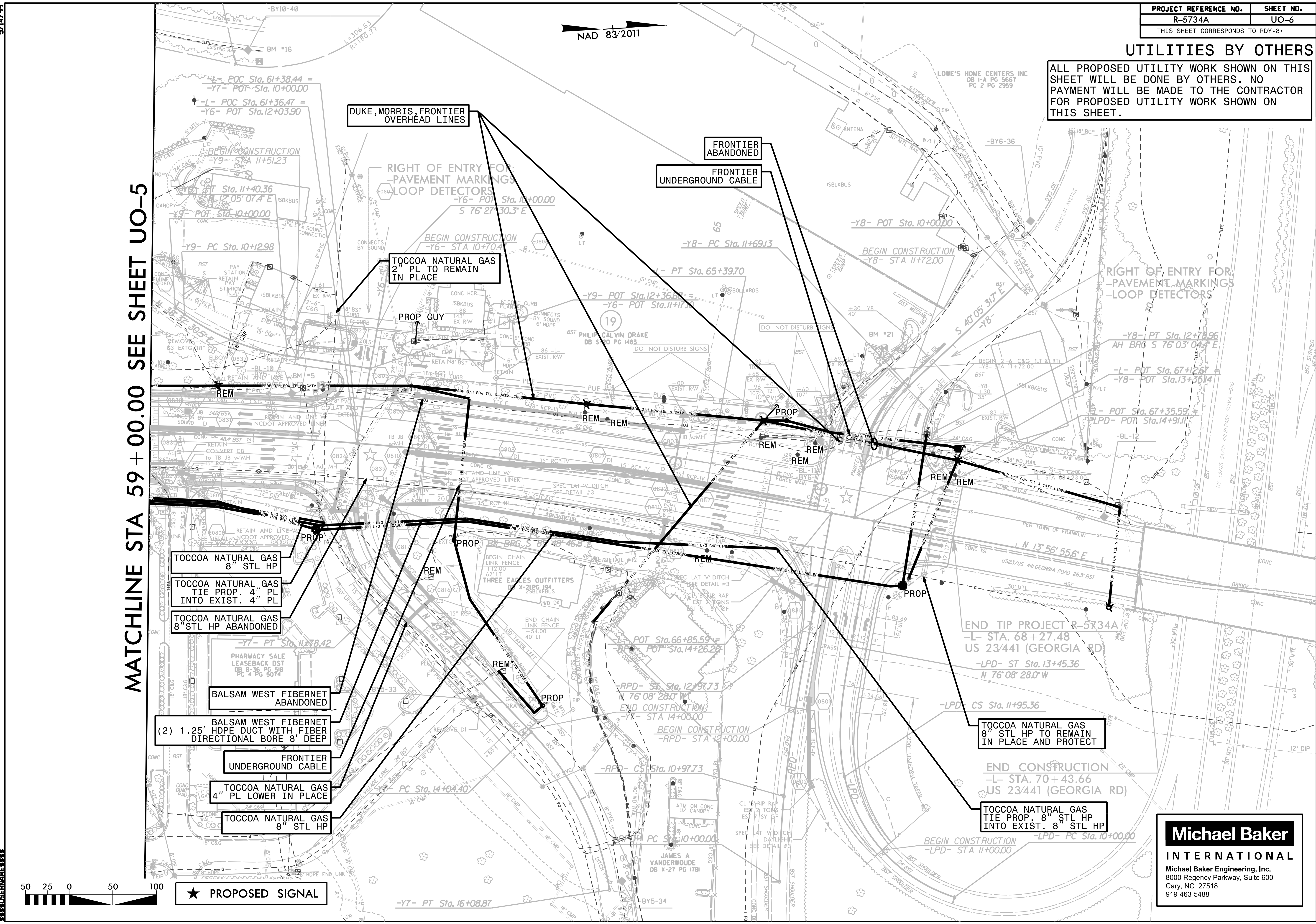
PROJECT REFERENCE NO.	SHEET NO.
R-5734A	UO-6
THIS SHEET CORRESPONDS TO RDY-8	

UTILITIES BY OTHERS

ALL PROPOSED UTILITY WORK SHOWN ON THIS SHEET WILL BE DONE BY OTHERS. NO PAYMENT WILL BE MADE TO THE CONTRACTOR FOR PROPOSED UTILITY WORK SHOWN ON THIS SHEET.

NAD 83/2011

MATCHLINE STA 59 + 00.00 SEE SHEET UO-5



DUKE, MORRIS, FRONTIER OVERHEAD LINES

FRONTIER ABANDONED UNDERGROUND CABLE

TOCCOA NATURAL GAS 2" PL TO REMAIN IN PLACE

PROP GUY

TOCCOA NATURAL GAS 8" STL HP
 TOCCOA NATURAL GAS TIE PROP. 4" PL INTO EXIST. 4" PL
 TOCCOA NATURAL GAS 8" STL HP ABANDONED

BALSAM WEST FIBERNET ABANDONED

(2) 1.25' HDPE DUCT WITH FIBER DIRECTIONAL BORE 8' DEEP

FRONTIER UNDERGROUND CABLE

TOCCOA NATURAL GAS 4" PL LOWER IN PLACE

TOCCOA NATURAL GAS 8" STL HP

TOCCOA NATURAL GAS 8" STL HP TO REMAIN IN PLACE AND PROTECT

TOCCOA NATURAL GAS TIE PROP. 8" STL HP INTO EXIST. 8" STL HP

★ PROPOSED SIGNAL



Michael Baker INTERNATIONAL
 Michael Baker Engineering, Inc.
 8000 Regency Parkway, Suite 600
 Cary, NC 27518
 919-463-5488