



STATE OF NORTH CAROLINA  
DEPARTMENT OF TRANSPORTATION

ROY COOPER  
GOVERNOR

JAMES H. TROGDON, III  
SECRETARY

November 14, 2018

**Addendum No. 2**

RE: Contract # C204130

WBS # 17BP.14.R.154, 50192.3.1

STATE FUNDED

**Macon County (R-5734A)**

US-23/441 From US-64 To SR-1652 (Wide Horizon Drive)/SR-1152  
(Belden Circle) & Bridge # 314 Over Cartoogechaye Creek

**November 20, 2018 Letting**

To Whom It May Concern:

The following revisions have been made to the Wall plans:

Sheet No.	Revisions
W-1	Revised the quantity of "Wall Face Surface"

Please void Sheet No. W-1 in your plans and staple the revised sheet thereto.

Reference is made to the proposal form furnished to you on this project.

The following revisions have been made to the proposal:

Page No.	Revisions
Proposal Cover	Note added that reads "Includes Addendum No. 2 Dated November 14, 2018".
G-5	Revised the list of parcels in the project special provision entitled "Delay In Right Of Entry". Also, removed "Soldier Pile Retaining Wall" from the list of "Major Contract Items"

Please void the above listed pages in your proposal and staple the revised pages thereto.

*Mailing Address:*  
NC DEPARTMENT OF TRANSPORTATION  
CONTRACT STANDARDS AND DEVELOPMENT  
1591 MAIL SERVICE CENTER  
RALEIGH, NC 27699-1591

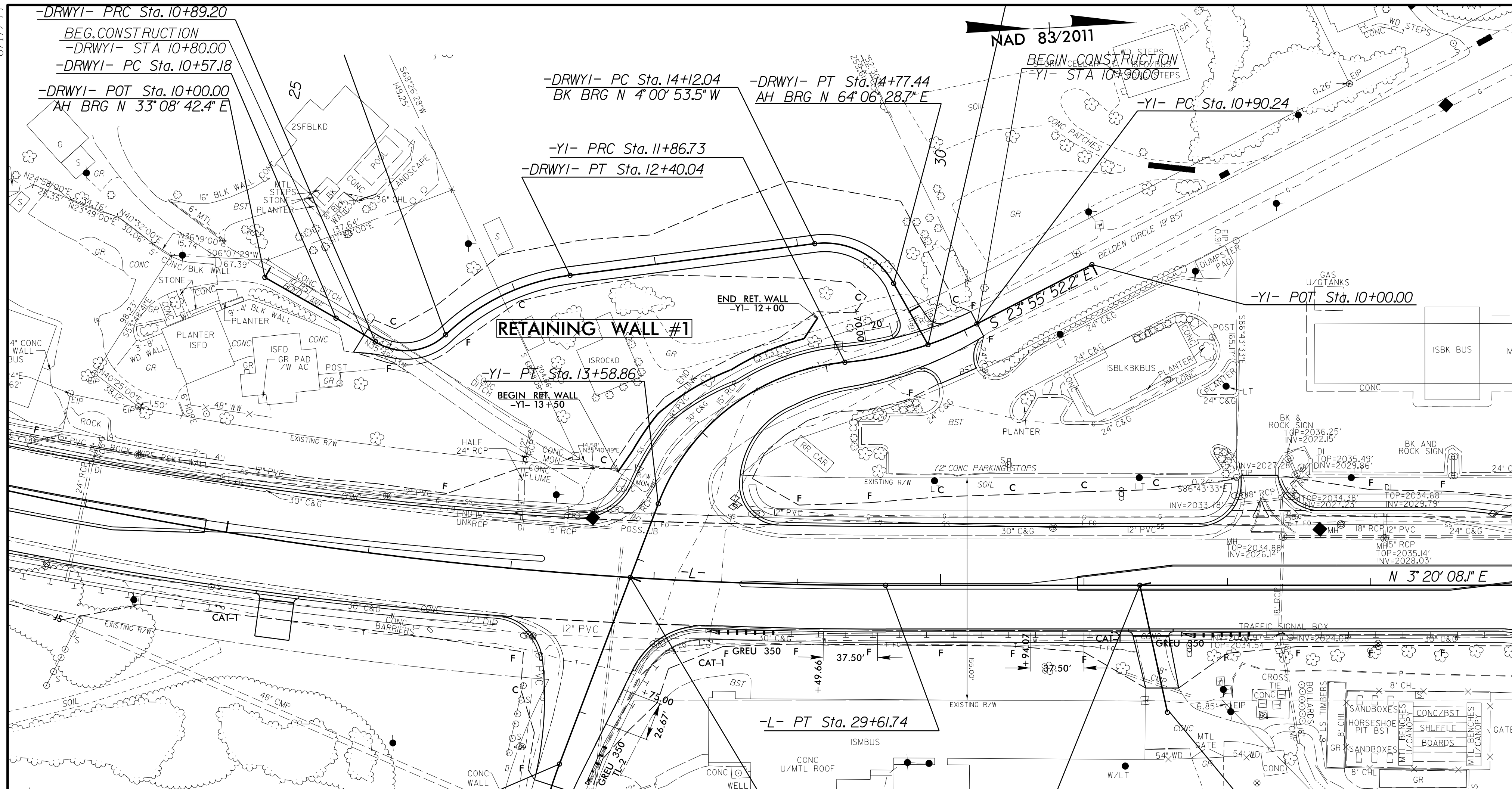
*Telephone:* (919) 707-6900  
*Fax:* (919) 250-4127  
*Customer Service:* 1-877-368-4968

*Location:*  
1020 BIRCH RIDGE DR.  
RALEIGH, NC 27610

*Website:* www.ncdot.gov



8.17.17.99



**-DRWYI-**

PI Sta 10+73.19 Δ = 2° 26' 45.4" (RT) D = 7° 38' 22.0" L = 32.02' T = 16.01' R = 750.00'	PI Sta 11+20.44 Δ = 75° 59' 20.3" (LT) D = 143° 14' 22.0" L = 53.05' T = 31.25' R = 400.00'
PI Sta 11+92.86 Δ = 36° 22' 59.0" (RT) D = 37° 12' 18.2" L = 97.79' T = 50.67' R = 154.00'	PI Sta 14+49.23 Δ = 68° 07' 22.2" (RT) D = 104° 10' 26.9" L = 65.39' T = 37.18' R = 55.00'

**-YI-**

PI Sta 11+39.09 Δ = 22° 06' 45.3" (RT) D = 22° 55' 05.9" L = 96.48' T = 48.85' R = 250.00'	PI Sta 12+83.03 Δ = 64° 02' 32.6" (LT) D = 37° 12' 18.2" L = 172.13' T = 96.31' R = 154.00'
---	--

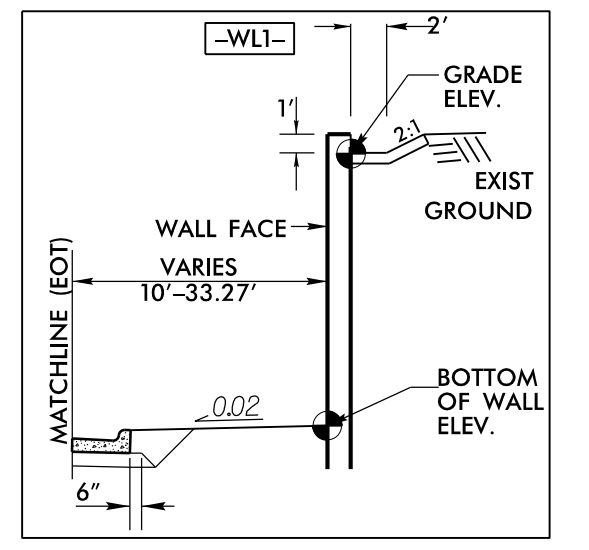
**-L-**

PI Sta 24+60.02 Δ = 20° 17' 00.1" (LT) D = 2° 00' 00.0" L = 1,014.17' T = 512.45' R = 2,864.79'
--

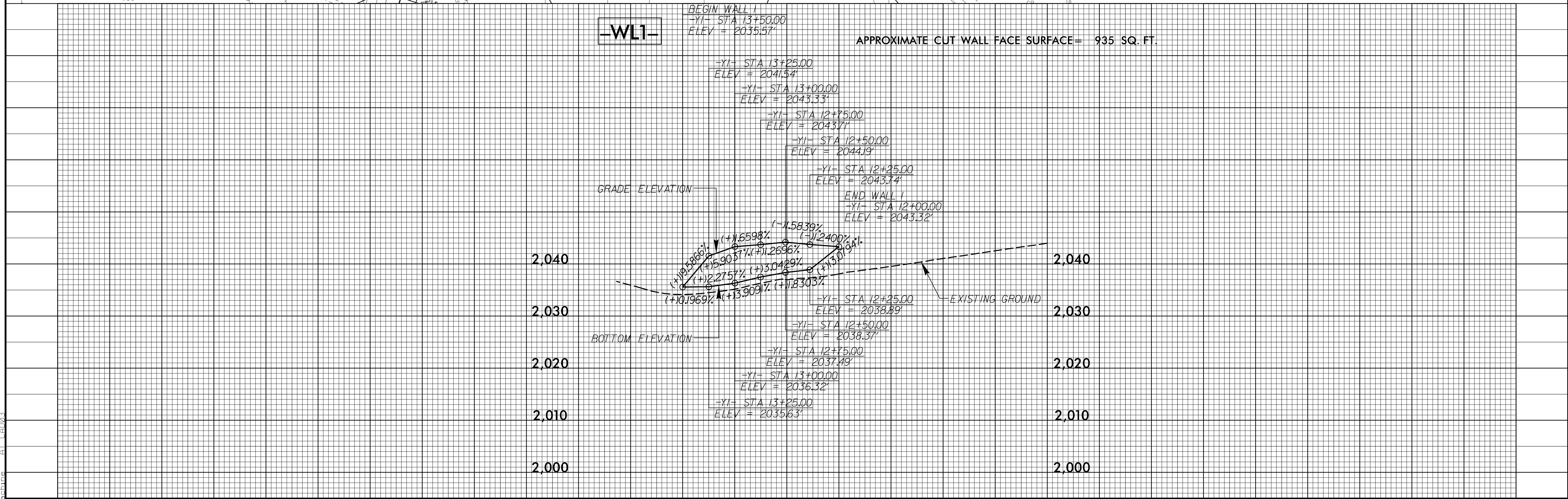
PROJECT REFERENCE NO. R-5734A	SHEET NO. W-1
RW SHEET NO.	
ROADWAY DESIGN ENGINEER	GEOTECHNICAL ENGINEER
DOCUMENT NOT CONSIDERED FINAL UNLESS ALL SIGNATURES COMPLETED	

**Stantec**

Stantec Consulting Services Inc.  
801 Jones Franklin Road  
Suite 300  
Raleigh, NC 27606  
Tel. (919) 851-6866  
Fax. (919) 851-7024  
www.stantec.com  
License No. F-0672



THE WALL ENVELOPE DOES NOT ACCURATELY DEPICT THE ACTUAL FACE OF THE WALL



**-W1-**

APPROXIMATE CUT WALL FACE SURFACE= 935 SQ. FT.

GRADE ELEVATION

BOTTOM ELEVATION

14      13      12

I:\NOV-2016\1358\1-1\Projects\18\_VH\57344\_Wall\Addendum\57344\_Wall.rdw\_WL\_Envelopes.dgn  
 11/14/2018 3:36:07 PM EST