

**This electronic collection of documents is provided  
for the convenience of the user  
and is Not a Certified Document –**

**The documents contained herein were originally issued  
and sealed by the individuals whose names and license  
numbers appear on each page, on the dates appearing  
with their signature on that page.**

**This file or an individual page  
shall not be considered a certified document.**

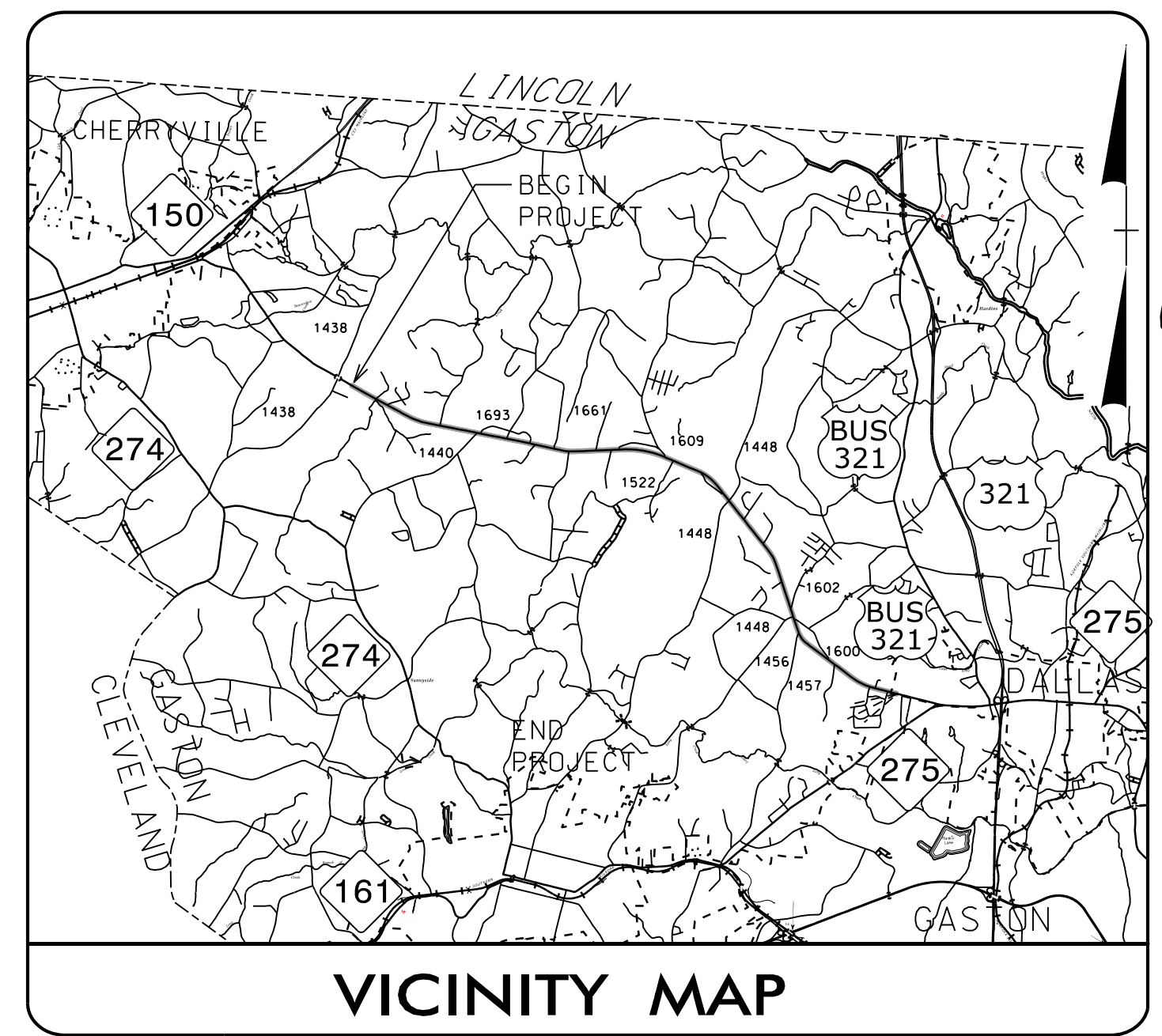
09.02B/99

**TIP PROJECT: W-5212N**

STATE OF NORTH CAROLINA  
DIVISION OF HIGHWAYS

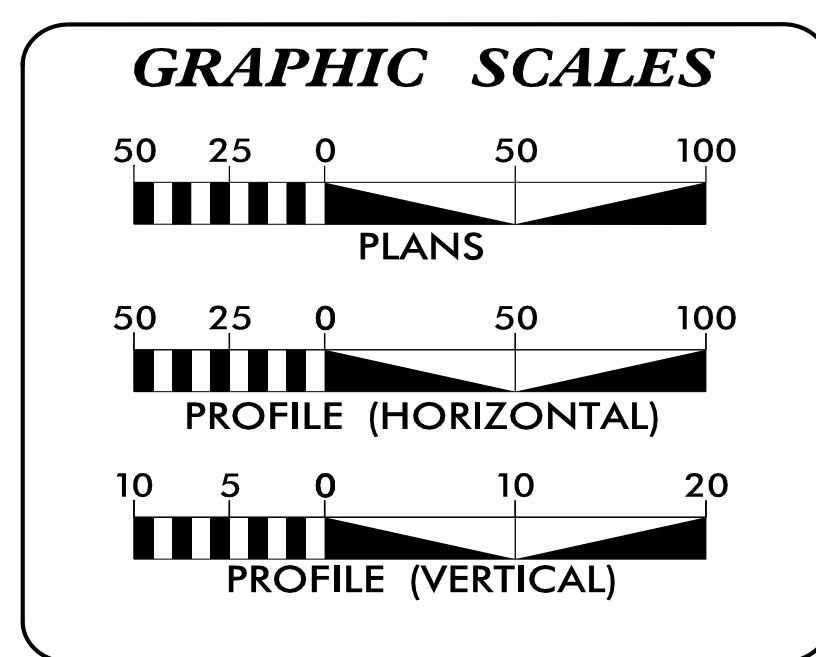
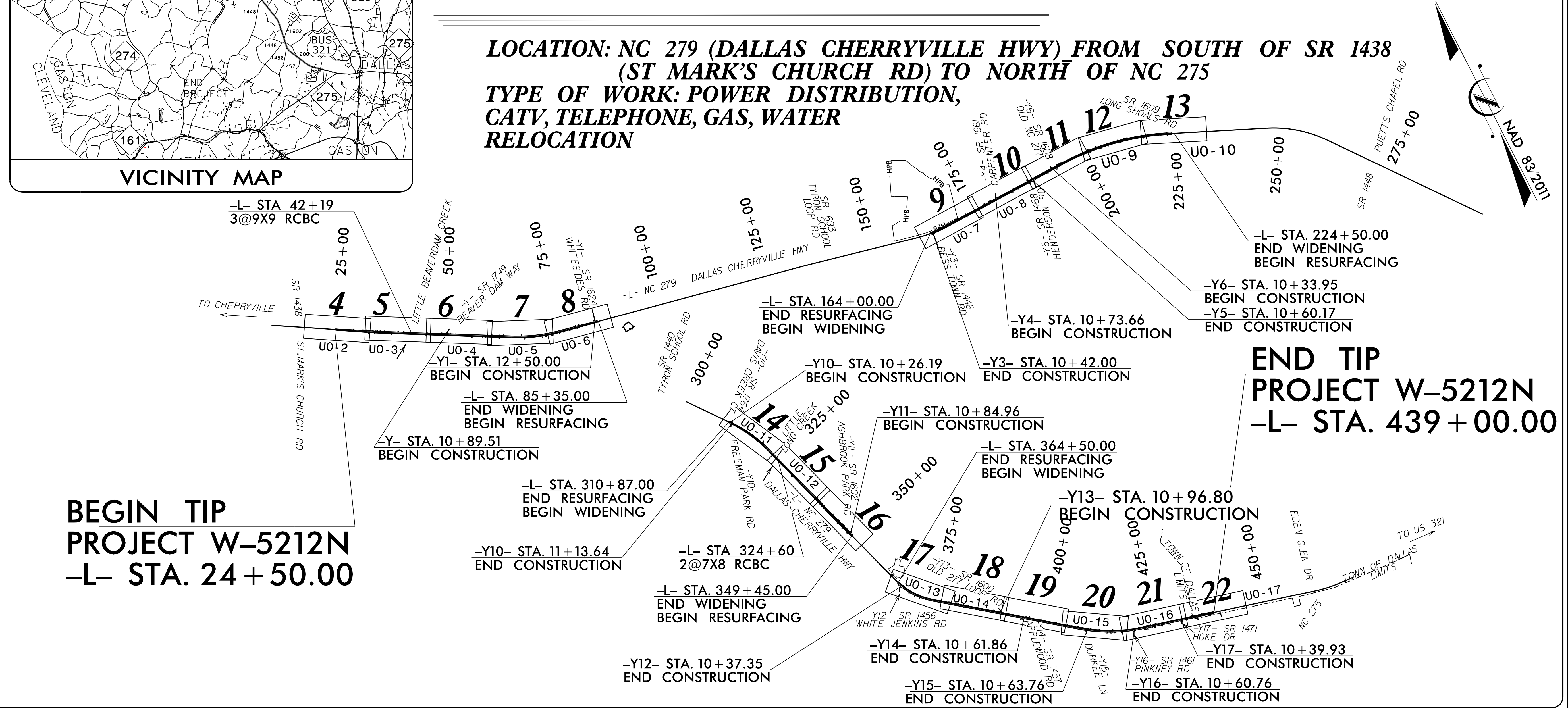
T.I.P. NO.	SHEET NO.
W-5212N	UO-1

**NOTE:**  
ALL UTILITY WORK SHOWN ON THIS SHEET WILL BE DONE BY OTHERS. NO PAYMENT WILL BE MADE TO THE CONTRACTOR FOR UTILITY WORK SHOWN ON THIS SHEET.



# UTILITIES BY OTHERS PLANS GASTON COUNTY

**LOCATION:** NC 279 (DALLAS CHERRYVILLE HWY) FROM SOUTH OF SR 1438 (ST MARK'S CHURCH RD) TO NORTH OF NC 275  
**TYPE OF WORK:** POWER DISTRIBUTION, CATV, TELEPHONE, GAS, WATER RELOCATION



**INDEX OF SHEETS**

SHEET NO.:	DESCRIPTION:
UO-1	TITLE SHEET
UO-2 THRU UO-17	UBO PLAN SHEETS

- UTILITY OWNERS WITH CONFLICTS**
- (A) POWER DISTRIBUTION - REMC
  - (B) CATV - CHARTER COMMUNICATIONS
  - (C) CATV - TIME WARNER
  - (D) COMMUNICATION - AT&T
  - (E) GAS - PSNC ENERGY
  - (F) WATER - TOWN OF DALLAS
  - (G) WATER - TWO RIVERS UTILITIES

PREPARED IN THE OFFICE OF:

**TELICS**  
849 SOUTH LAUREL ST  
LINCOLN, NC 28092  
PHONE (704) 732-3241

STEVE MODE	UTILITY PROJECT MANAGER
DANNY LITTLE	PROJECT UTILITY COORDINATOR
	PROJECT UTILITY XXXX

**DIVISION OF HIGHWAYS  
UTILITIES UNIT**  
1535 MAIL SERVICES CENTER  
RALEIGH, NC 27699-1535  
PHONE (919) 707-6690  
FAX (919) 250-4151

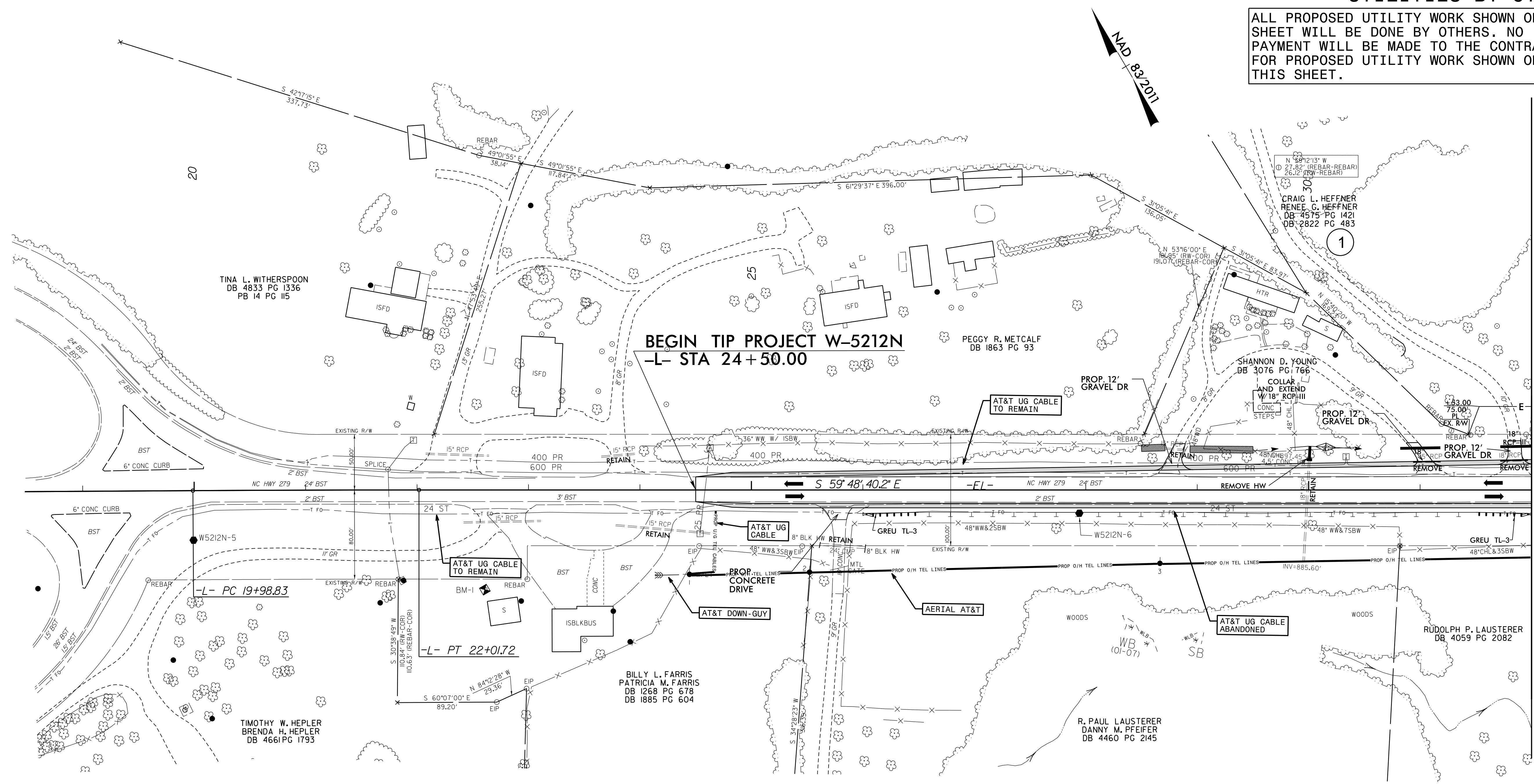
ERIC CONNER	UTILITIES REGIONAL ENGINEER
CHAD DREWERY	UTILITIES ENGINEER
ANNE SCHLEY	UTILITIES AREA COORDINATOR
WARREN ANDERSON	UTILITIES COORDINATOR

07-SEP-2018 05:45 C:\User\NCDOT\user\NCDOT\Utilities\Engineering\UBO\Proj\290\_001\_W5212N\_ut\_tsh\_U001\_psh.dgn \$\$\$USERNAME\$\$\$



### UTILITIES BY OTHERS

ALL PROPOSED UTILITY WORK SHOWN ON THIS SHEET WILL BE DONE BY OTHERS. NO PAYMENT WILL BE MADE TO THE CONTRACTOR FOR PROPOSED UTILITY WORK SHOWN ON THIS SHEET.



MATCH LINE STA -L- 32+00.00  
MATCH TO SHEET NO 3

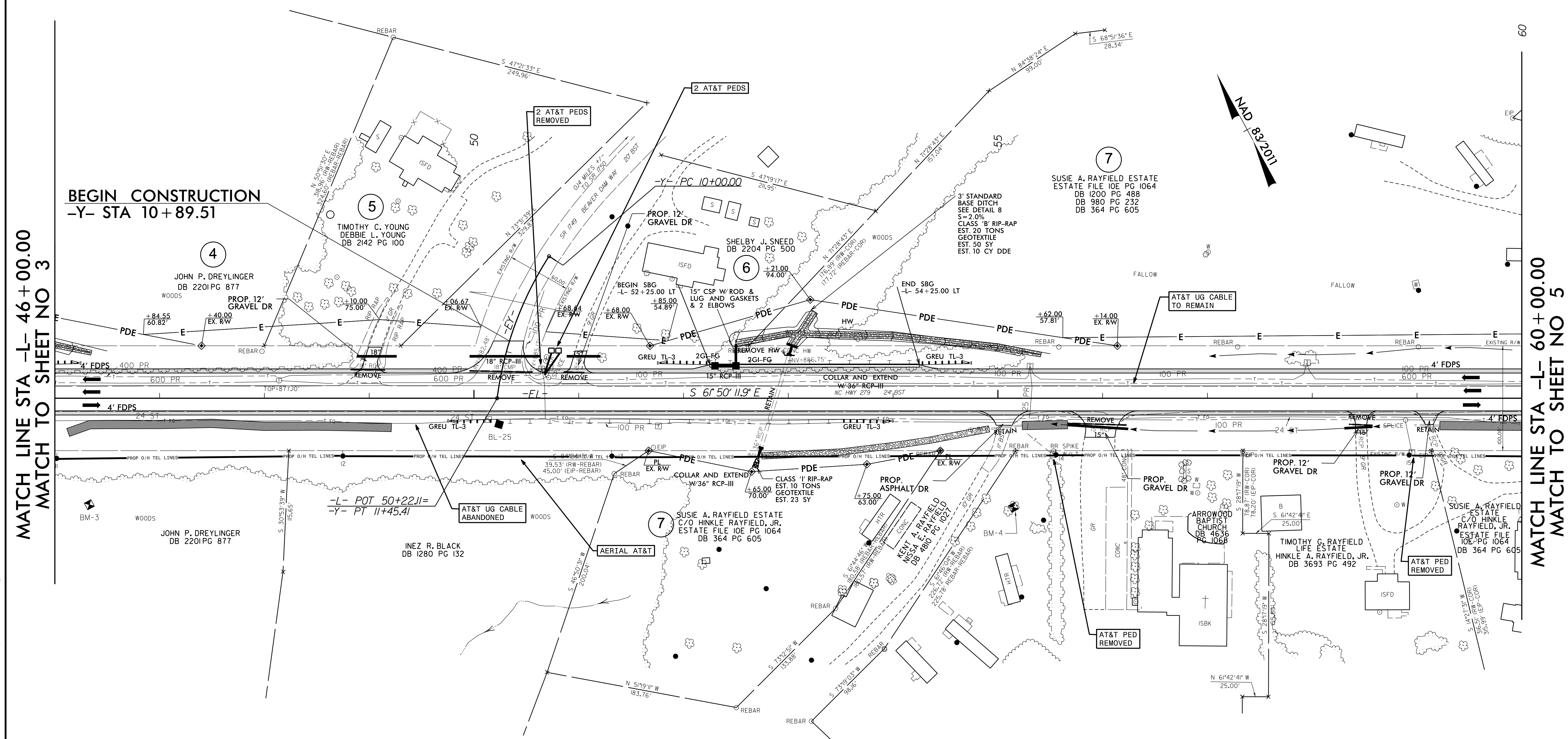
5/14/99

07-SEP-2018 05:50  
\\w-5212n\util\lives\eng\engineering\UBD\Proj\290\_003\_w5212n\_util\_rdy4\_U002\_psh.dgn



### UTILITIES BY OTHERS

ALL PROPOSED UTILITY WORK SHOWN ON THIS SHEET WILL BE DONE BY OTHERS. NO PAYMENT WILL BE MADE TO THE CONTRACTOR FOR PROPOSED UTILITY WORK SHOWN ON THIS SHEET.



MATCH LINE STA -L- 46+00.00  
MATCH TO SHEET NO 3

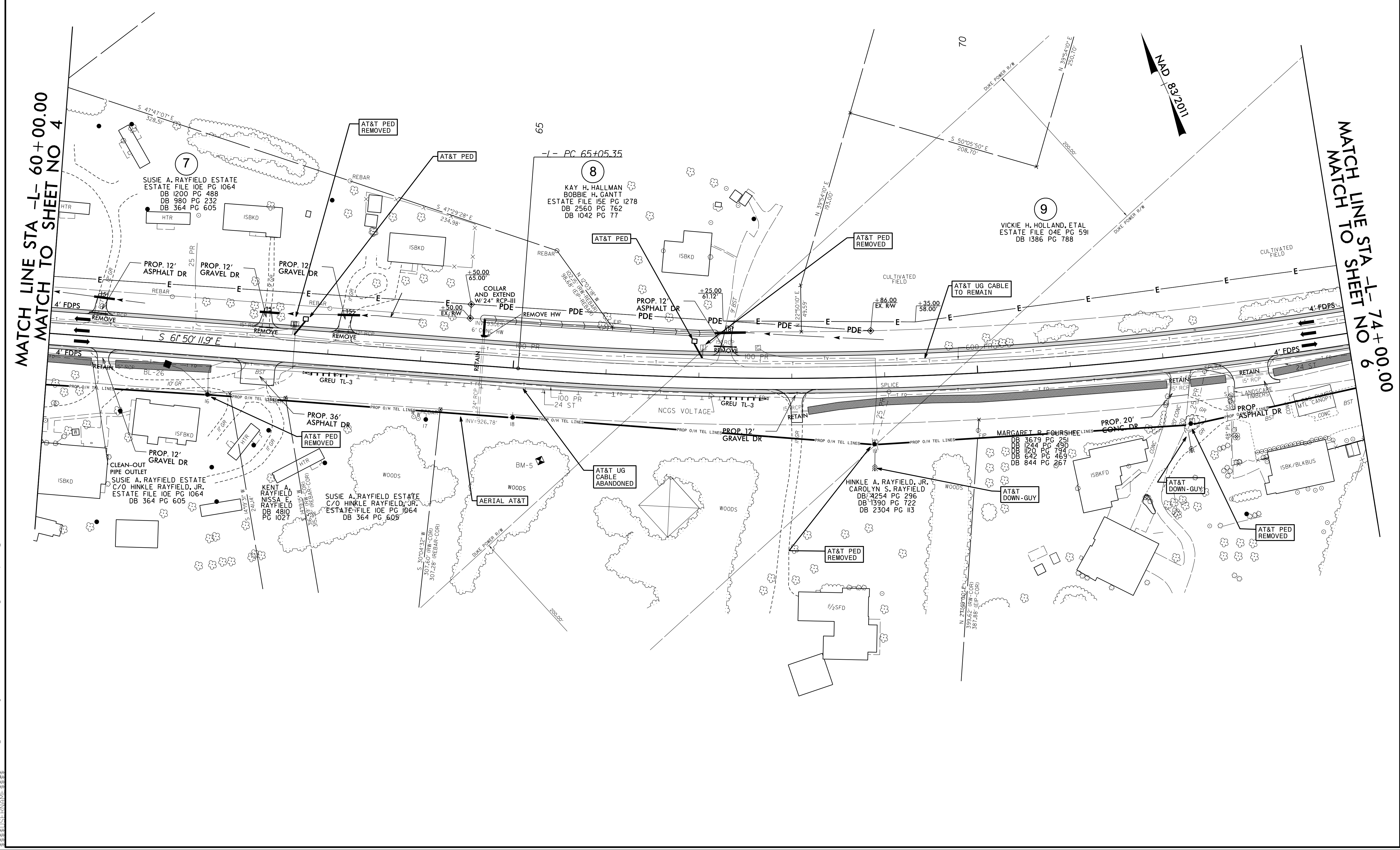
MATCH LINE STA -L- 60+00.00  
MATCH TO SHEET NO 5

5/14/99  
07-SEP-2018 06:00 eerrng\UB0V\Proj\290.007.W5212N.ut\_rdy6.LU004\_psh.dgn



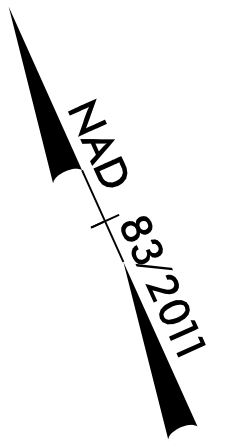
### UTILITIES BY OTHERS

ALL PROPOSED UTILITY WORK SHOWN ON THIS SHEET WILL BE DONE BY OTHERS. NO PAYMENT WILL BE MADE TO THE CONTRACTOR FOR PROPOSED UTILITY WORK SHOWN ON THIS SHEET.



MATCH LINE STA -L- 60+00.00  
MATCH TO SHEET NO 4

MATCH LINE STA -L- 74+00.00  
MATCH TO SHEET NO 6



5/14/99  
 07-SEP-2018 06:10 c:\p09\w-5212n\ut-rdy7\_u005.psh.dgn  
 W-5212N\p09\w-5212n\ut-rdy7\_u005.psh.dgn

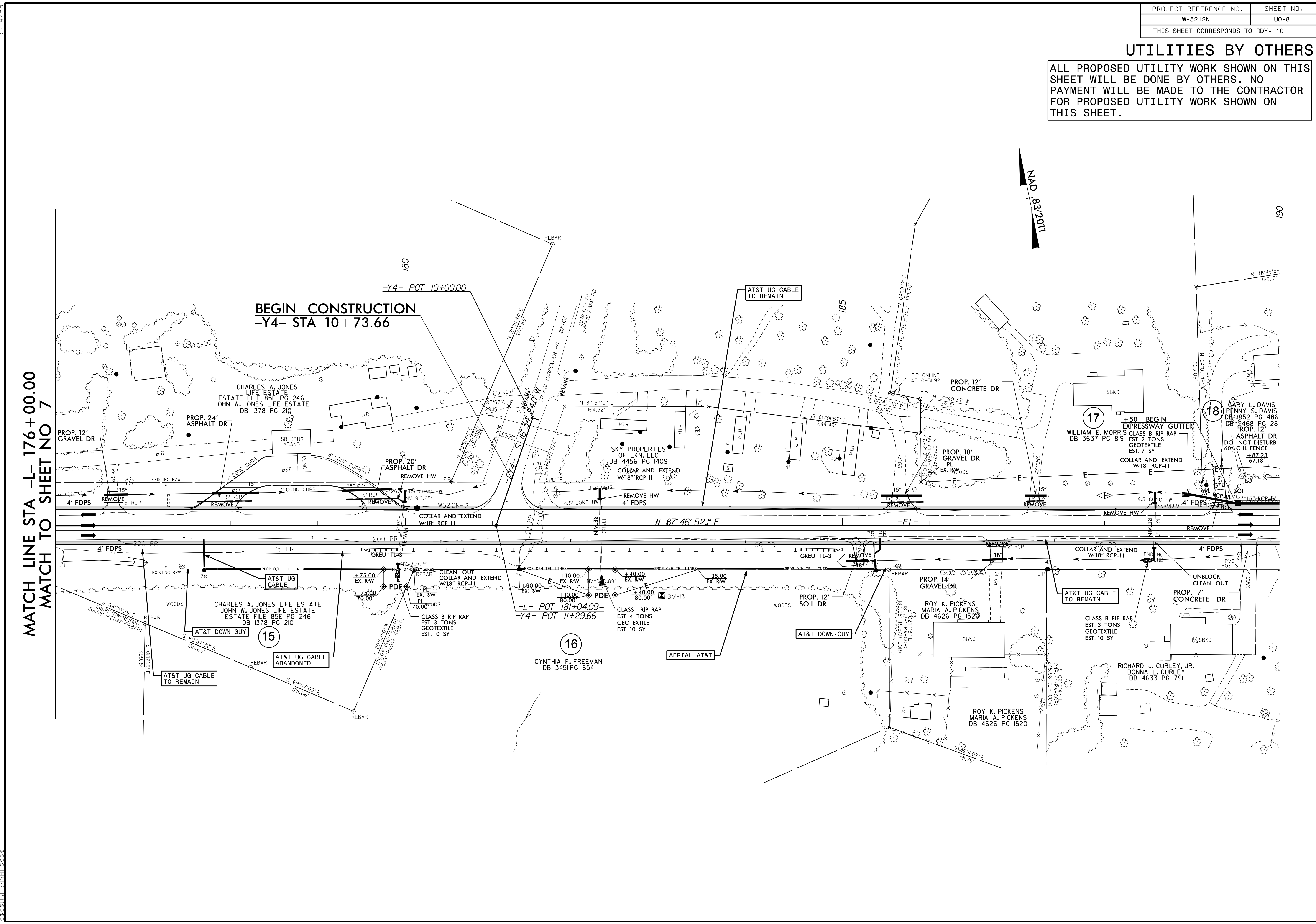






### UTILITIES BY OTHERS

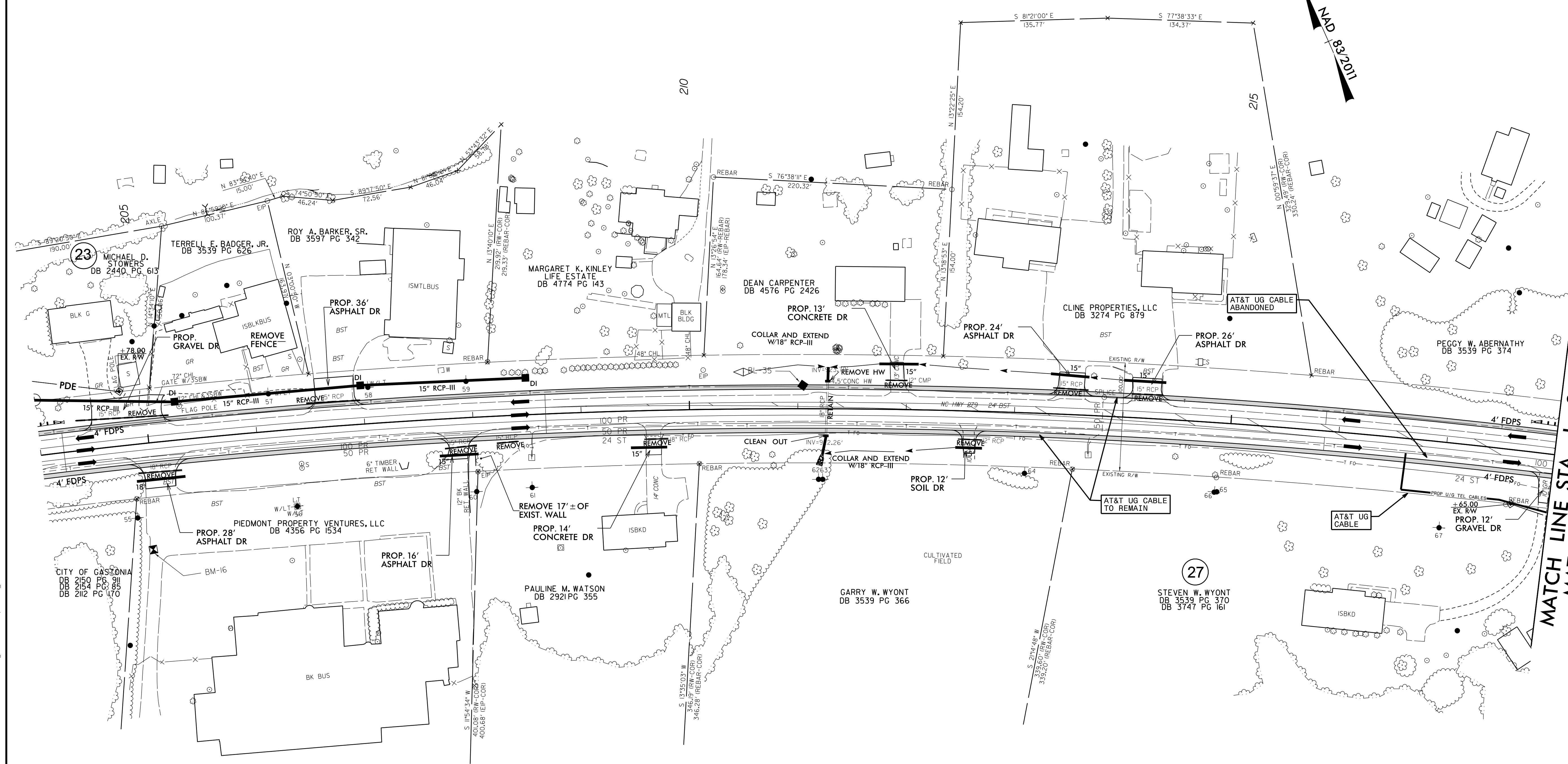
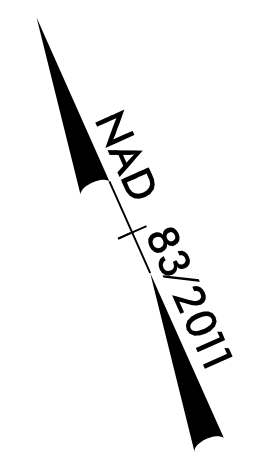
ALL PROPOSED UTILITY WORK SHOWN ON THIS SHEET WILL BE DONE BY OTHERS. NO PAYMENT WILL BE MADE TO THE CONTRACTOR FOR PROPOSED UTILITY WORK SHOWN ON THIS SHEET.



5/14/99  
 07-SEP-2018 06:27  
 N:\W-5212N\Drawings\RDY\Pro\15-W5212N.ut\_rdy10\_U008\_psh.dgn

### UTILITIES BY OTHERS

ALL PROPOSED UTILITY WORK SHOWN ON THIS SHEET WILL BE DONE BY OTHERS. NO PAYMENT WILL BE MADE TO THE CONTRACTOR FOR PROPOSED UTILITY WORK SHOWN ON THIS SHEET.



MATCH LINE STA -L- 218 + 00.00  
MATCH TO SHEET NO 70

5/14/99

C:\W-5212N\2018\06\32\eeering\UBO\Pro\290.017-W5212N.ut.-rdy12\_U009.psh.dgn





### UTILITIES BY OTHERS

ALL PROPOSED UTILITY WORK SHOWN ON THIS SHEET WILL BE DONE BY OTHERS. NO PAYMENT WILL BE MADE TO THE CONTRACTOR FOR PROPOSED UTILITY WORK SHOWN ON THIS SHEET.

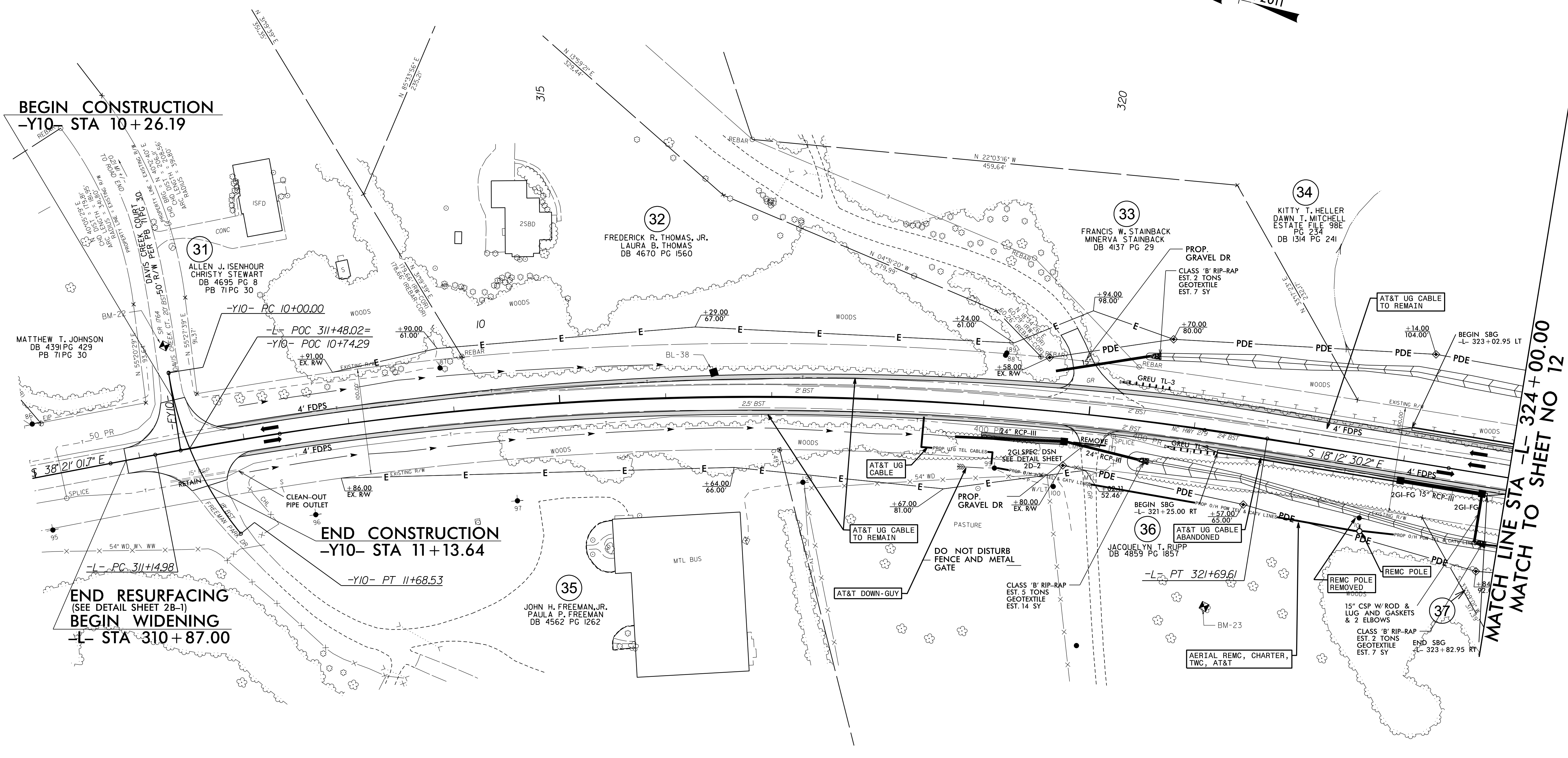


**BEGIN CONSTRUCTION**  
-Y10- STA 10+26.19

**END CONSTRUCTION**  
-Y10- STA 11+13.64

**END RESURFACING**  
(SEE DETAIL SHEET 2B-1)  
**BEGIN WIDENING**  
-L- STA 310+87.00

**MATCH LINE STA -L- 324+00.00**  
**MATCH TO SHEET NO 12**

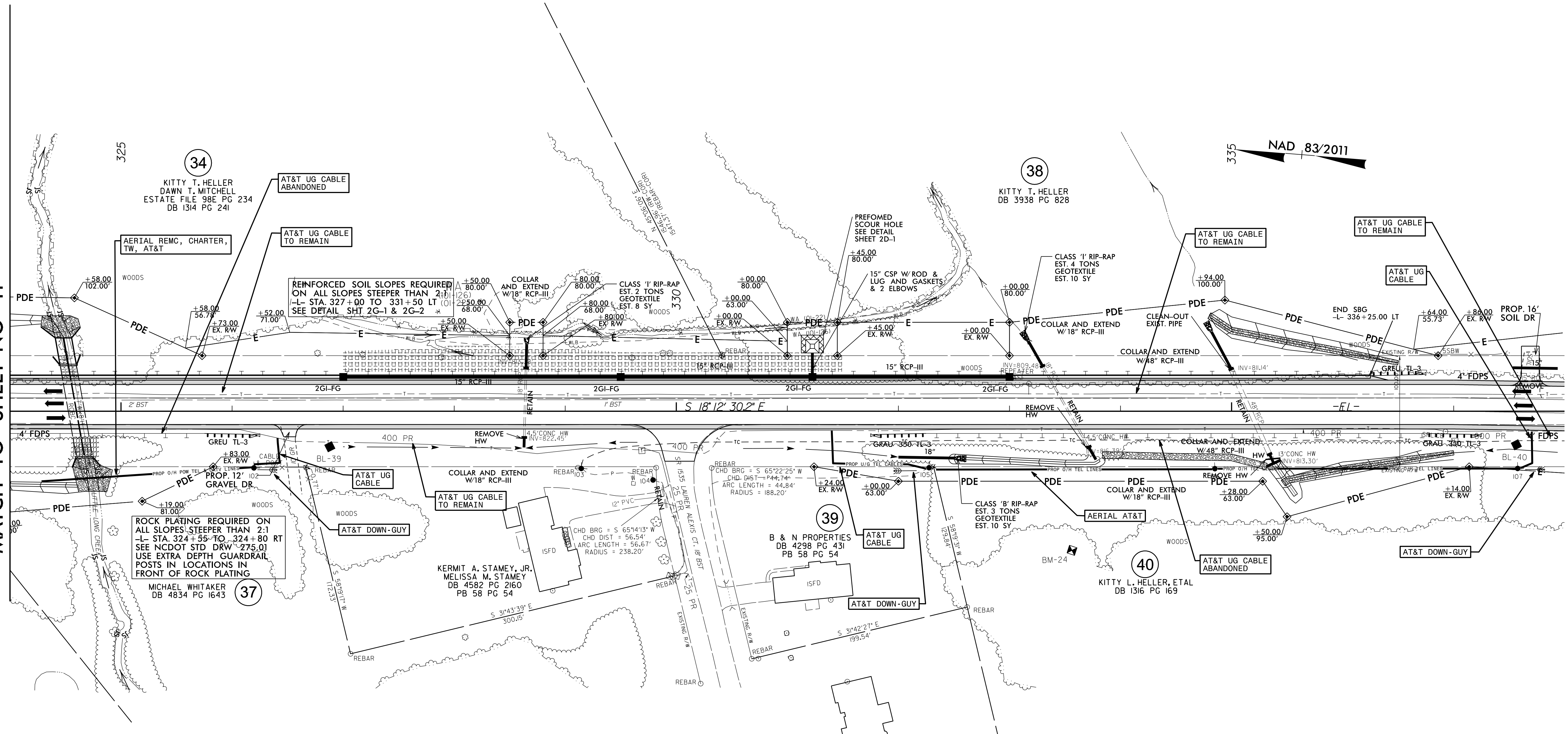


5/14/99  
 07-SEP-2018 06:46  
 \\W-5212N\Drawings\UB01\Pro\290.021.W5212N.ut\_r.dwg:ldj14\_u011.psh.dgn

### UTILITIES BY OTHERS

ALL PROPOSED UTILITY WORK SHOWN ON THIS SHEET WILL BE DONE BY OTHERS. NO PAYMENT WILL BE MADE TO THE CONTRACTOR FOR PROPOSED UTILITY WORK SHOWN ON THIS SHEET.

MATCH LINE STA -L- 324+00.00  
MATCH TO SHEET NO 11

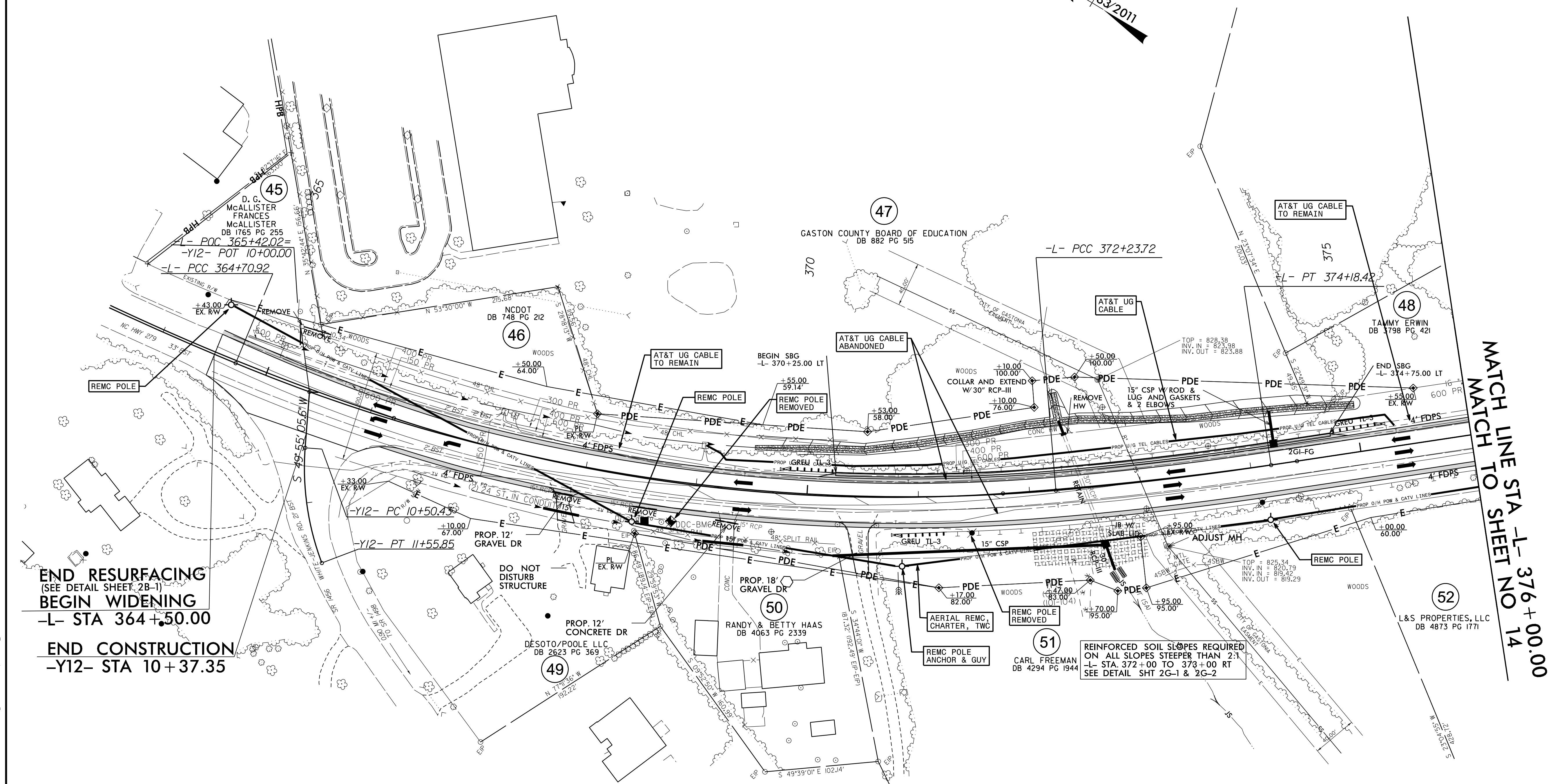
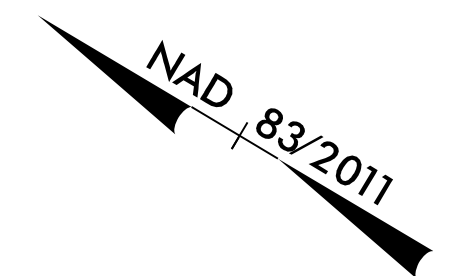


07-SEP-2018 07:00 eerrng\UB0\Proj\290.023.W5212N.ut.L.rdj\5\_U012\_psh.dgn

5/14/99

### UTILITIES BY OTHERS

ALL PROPOSED UTILITY WORK SHOWN ON THIS SHEET WILL BE DONE BY OTHERS. NO PAYMENT WILL BE MADE TO THE CONTRACTOR FOR PROPOSED UTILITY WORK SHOWN ON THIS SHEET.



**END RESURFACING**  
(SEE DETAIL SHEET 2B-1)  
**BEGIN WIDENING**  
-L- STA 364+50.00

**END CONSTRUCTION**  
-Y12- STA 10+37.35

**MATCH LINE STA -L- 376+00.00**  
**MATCH TO SHEET NO 14**

5/14/2018  
 07-SEP-2018 07:21  
 W-5212N\Utility\Engineering\UBO\Proj\2900\_025\_W5212N\ut-rdy17\_u013\_psh.dgn











