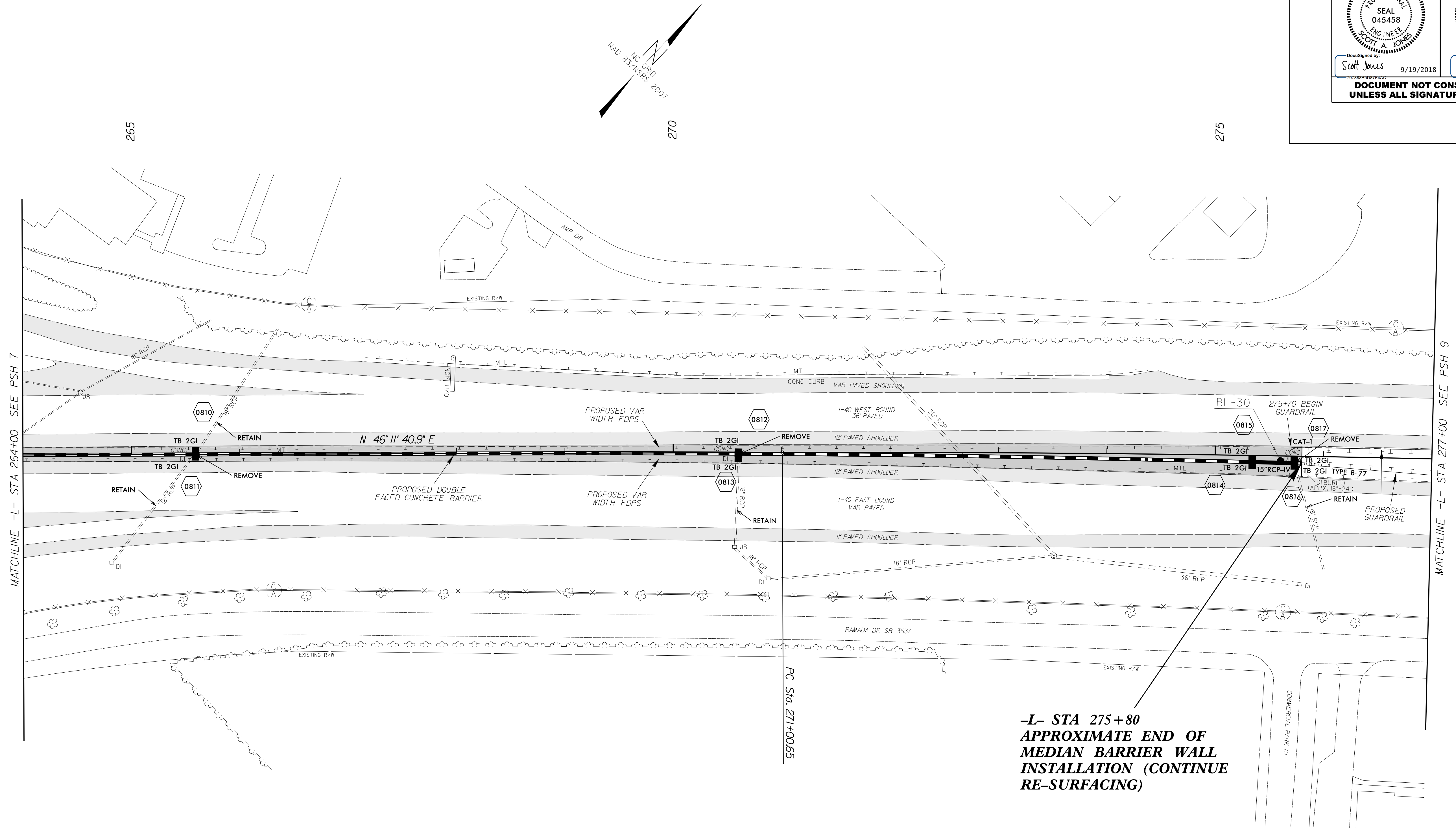


8/17/99
 19 SEP 2018 10:02
 C:\Users\jones\Documents\TIP_Projects\1-5952-40-West_Forsyth\Roadway\Design_Files\1-5952-ddc_psh8.dgn
 USER: JONES

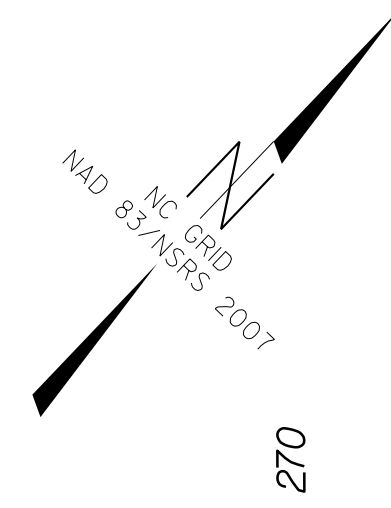
REVISIONS

PROJECT REFERENCE NO. 1-5952	SHEET NO. 8
RW SHEET NO.	
ROADWAY DESIGN ENGINEER SCOTT A. JONES SEAL 045458 NORTH CAROLINA PROFESSIONAL ENGINEER	HYDRAULICS ENGINEER WILLIAM G. CUNY SEAL 022000 NORTH CAROLINA PROFESSIONAL ENGINEER
Scott Jones 9/19/2018	WGC 9/25/2018
DOCUMENT NOT CONSIDERED FINAL UNLESS ALL SIGNATURES COMPLETED	



MATCHLINE -L- STA 264+00 SEE PSH 7

MATCHLINE -L- STA 277+00 SEE PSH 9



**-L- STA 275+80
 APPROXIMATE END OF
 MEDIAN BARRIER WALL
 INSTALLATION (CONTINUE
 RE-SURFACING)**