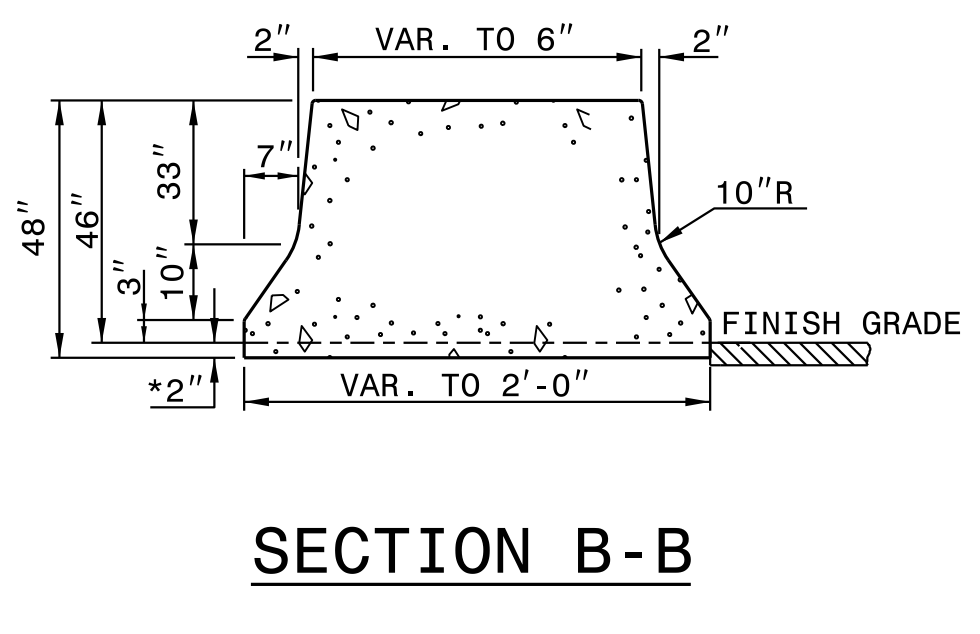
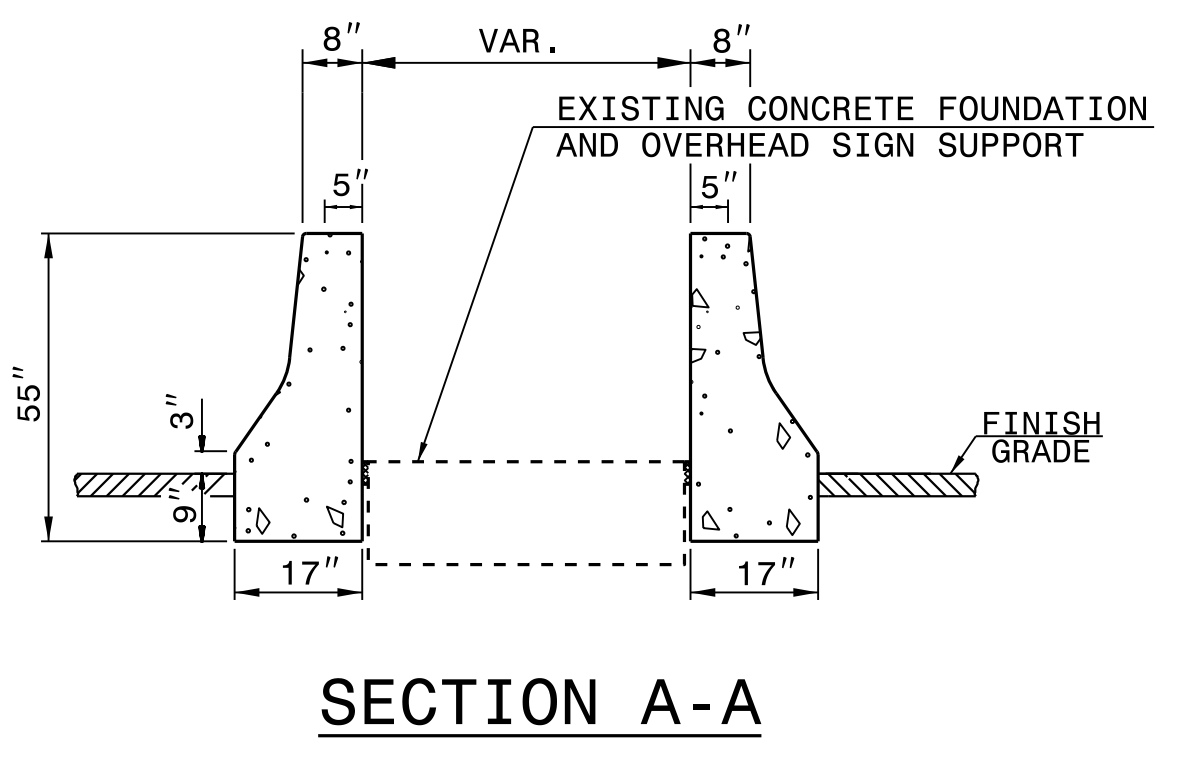
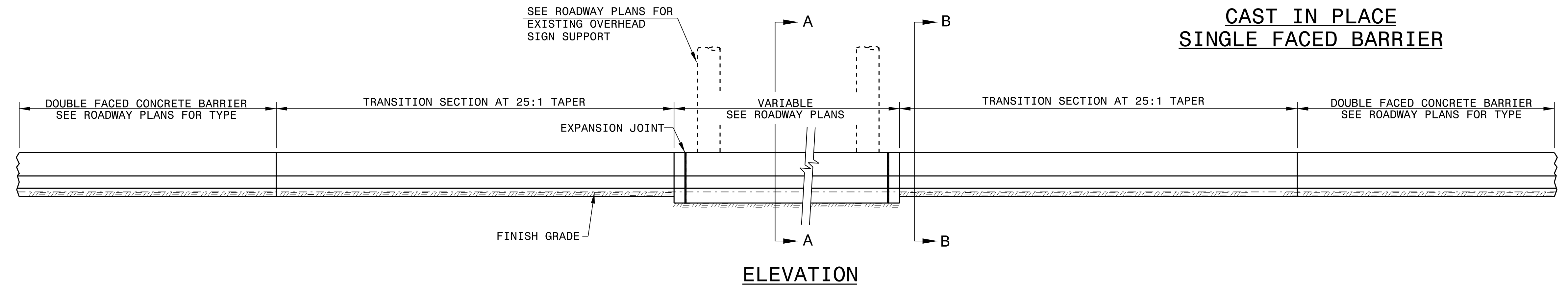
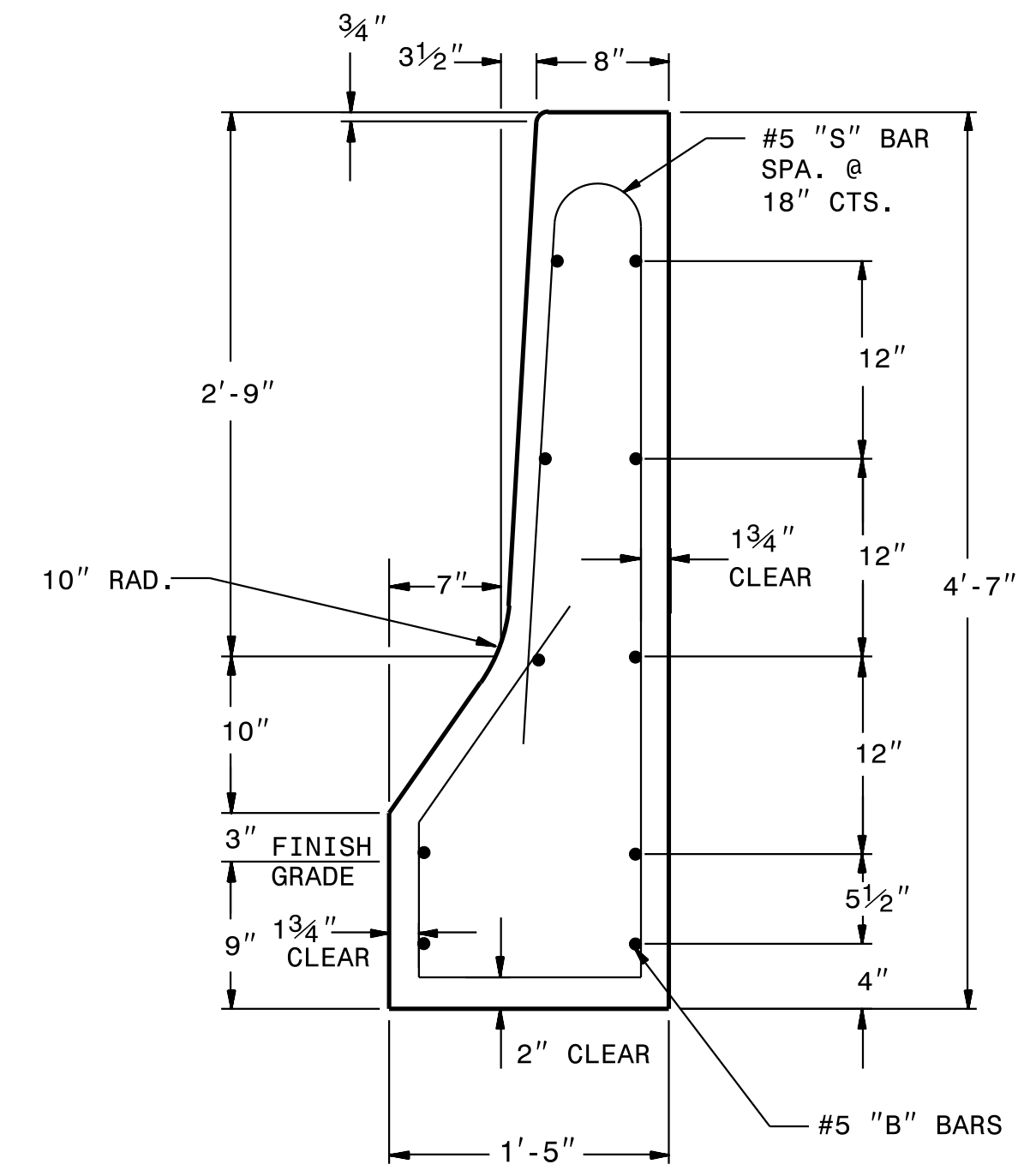
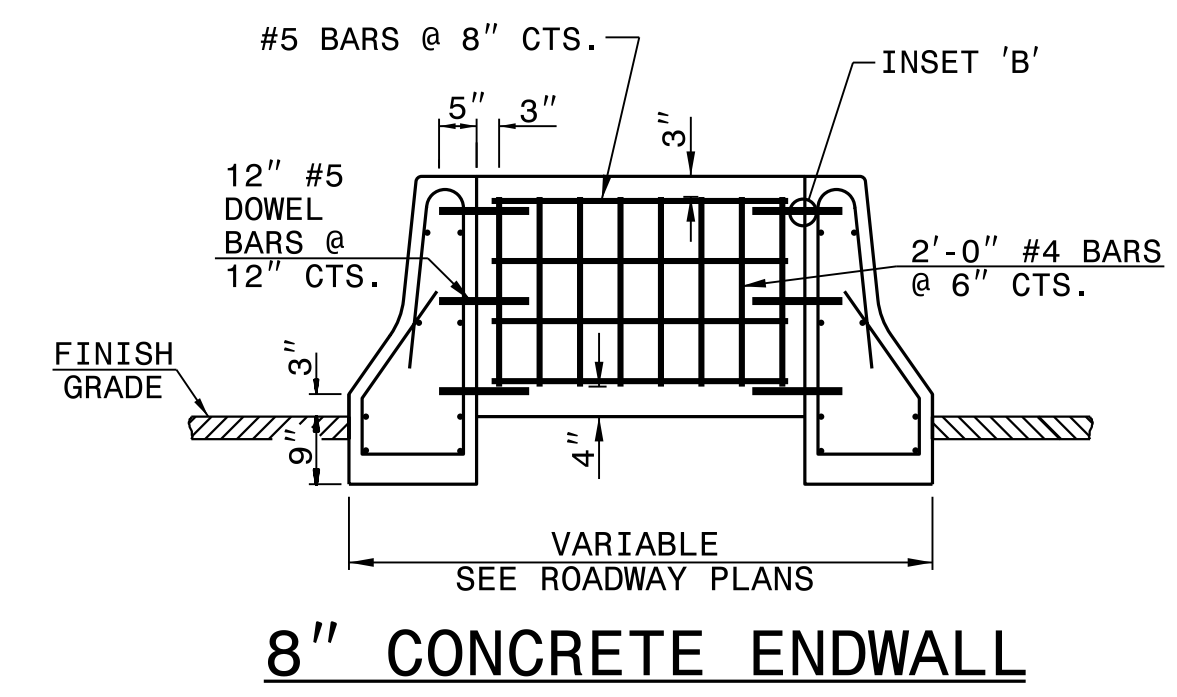
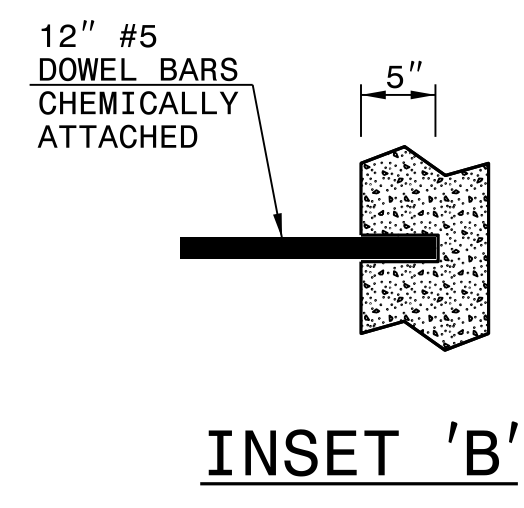
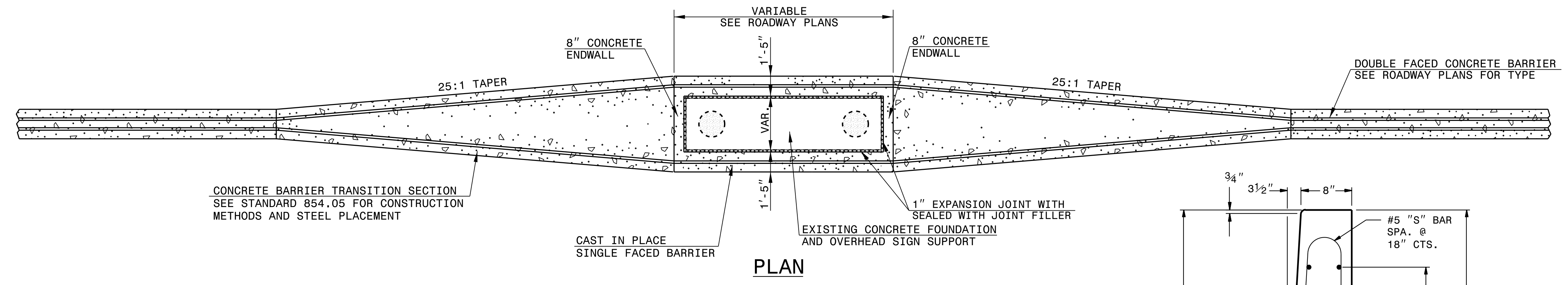


* DRAWING NOT TO SCALE



GENERAL NOTES:
 CONSTRUCT CONCRETE BARRIER WITH CLASS 'AA' CONCRETE. (SEE SPECIFICATIONS SECTION 854).
 CONSTRUCT EXPANSION AND CONTRACTION JOINTS AS SHOWN IN STANDARD DRAWING 854.01.
 SEAL EXPANSION JOINTS WITH JOINT FILLER. (SEE SECTION 1028 OF THE SPECIFICATIONS).
 SUBMIT ALTERNATIVE METHODS FOR STEEL FABRICATION PLACEMENT FOR REVIEW AND APPROVAL.
 SEE STANDARD DRAWING 854.05 FOR STEEL LAYOUT OF TRANSITION BARRIER.
 *THE 2" DIMENSION FROM FINISH GRADE TO THE BASE IS A MINIMUM DIMENSION.
 INSET FIRST 1" DIA. GALVANIZED BAR 12'-6" AND SPACE THE REMAINING 1' BARS AT 25'-0".



DOCUMENT NOT CONSIDERED FINAL
 UNLESS ALL SIGNATURES COMPLETED

**CONTRACT STANDARDS
 AND DEVELOPMENT UNIT**
 Office 919-707-6950 FAX 919-250-4119

**DETAIL OF CONCRETE
 BARRIER TRANSITION**

ORIGINAL BY: E.E. WARD	DATE: 7-28-03
MODIFIED BY: K.A. KEMPF	DATE: 11-02-18
CHECKED BY:	DATE:
FILE SPEC.: \\usr\details\stand\Median Pier transition barrier.dgn	

02-NOV-2018 15:04
 S:\Contracts\Contract\Special Details\vericard\usr\details\stand\Median Pier transition barrier.dgn
 K Kempf AT CSD-292596